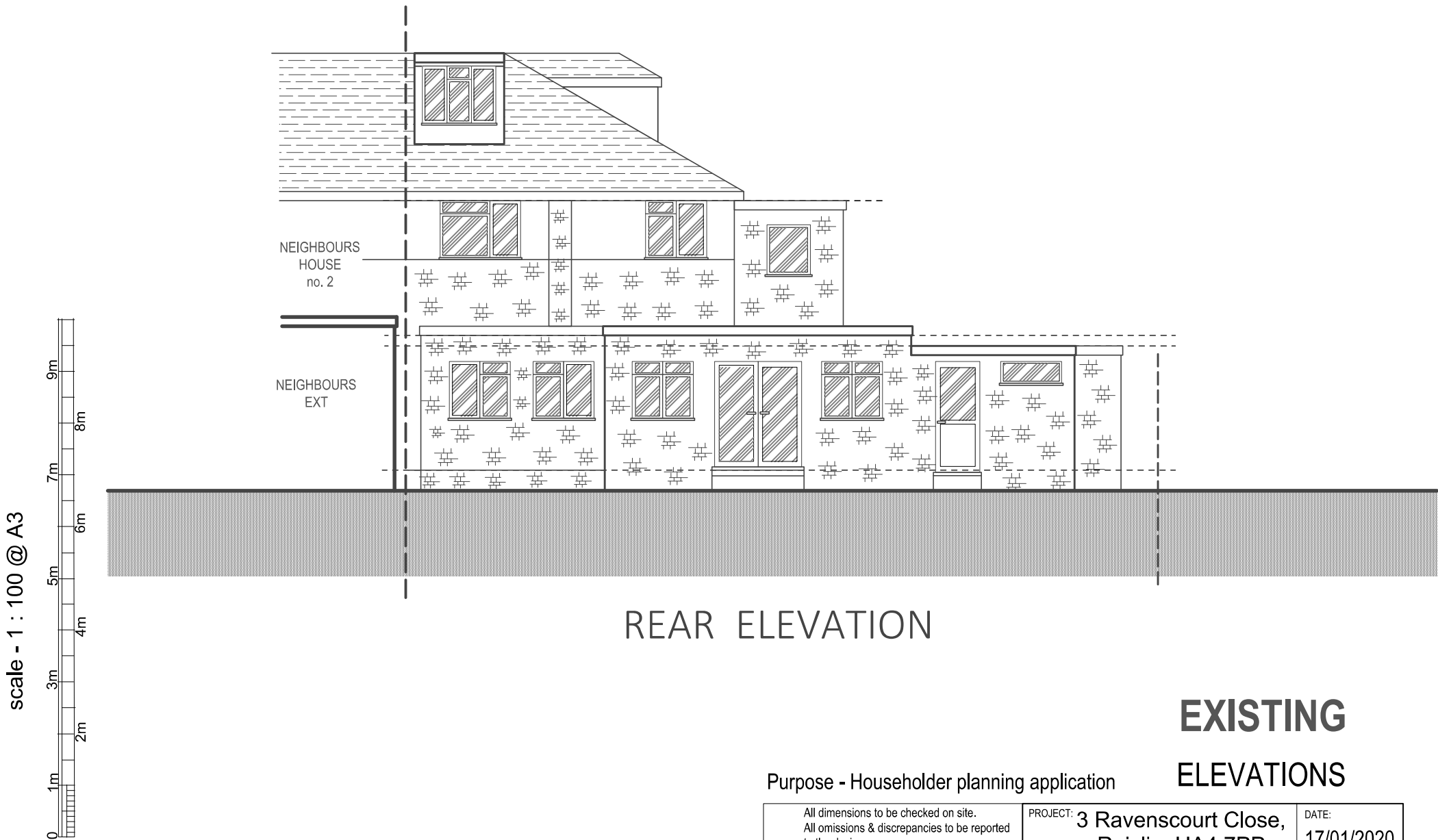




FRONT ELEVATION
(no change)

- ROOF
- Plain red/brown roof tiles
- WALLS
- Facing brickwork
- WINDOWS
- UPVc frame double glazed
- DOORS
- UPVc frame double glazed
- RWP &
GUTTERS
- UPVc black



EXISTING
ELEVATIONS

Purpose - Householder planning application

© SSK architects owns the copyright of this drawing which must not be reproduced in whole or part without the written permission.	PROJECT: 3 Ravenscourt Close, Ruislip, HA4 7PP	DATE: 17/01/2020
	DWG NO: ELEVATIONS 03	REVISION: