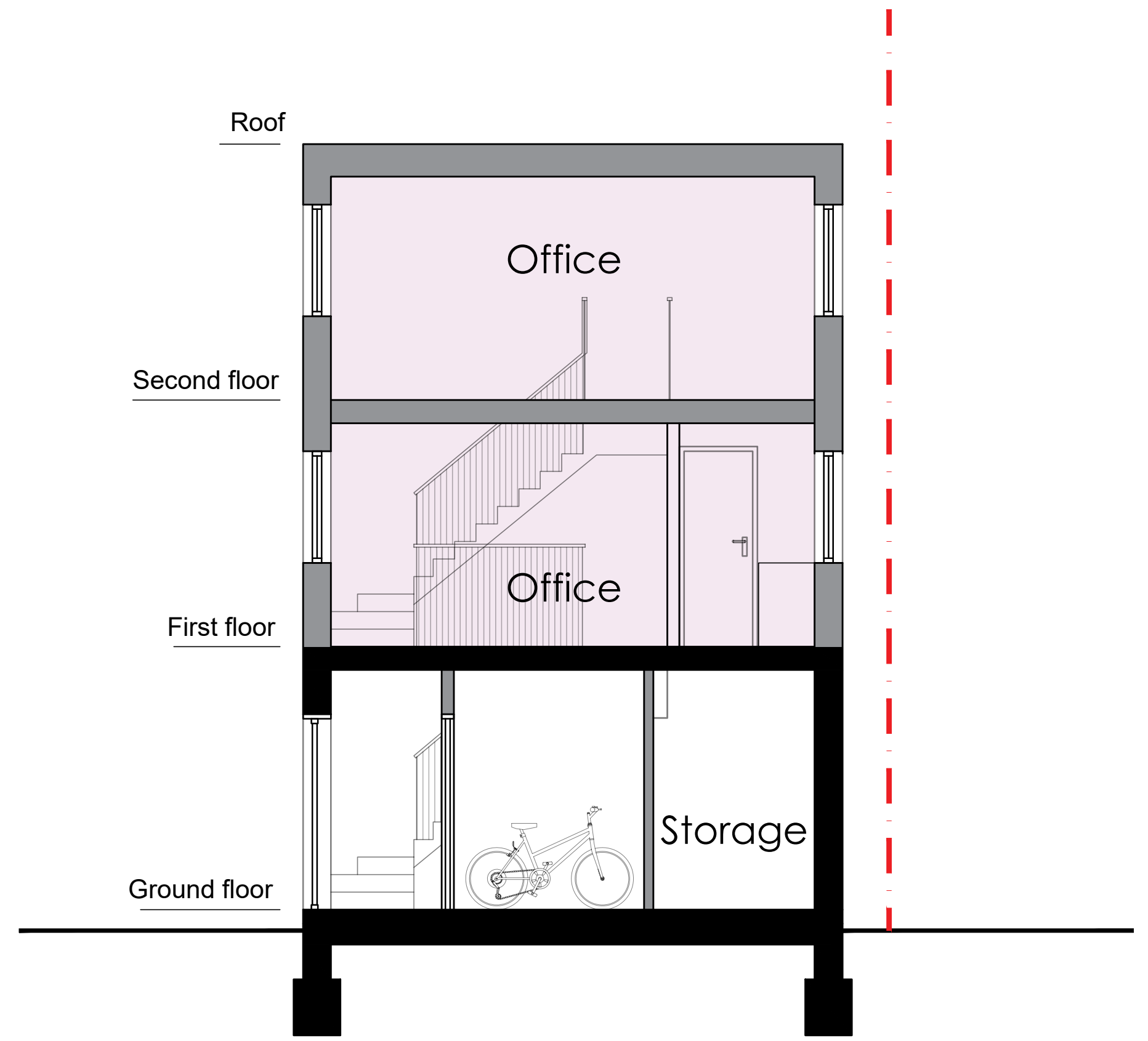


EXISTING SECTION A-A'



PROPOSED SECTION B-B'



PROJECT	DWG NO.	SCALE	DETAIL	02.08.2024	A 22.08.2024	B 12.11.2024	B 10.04.2025	16.05.2025			PROJECT NO.	<div>PR Architecture Ltd. Chartered Architect</div> <div>120, Pinner Road, Harrow, HA1 4JD. Tel: 0208 357 2304</div>
12 BOTWELL LANE, HAYES, UB3 2AA	10B	1:20 @ A2	SECTIONS	ISSUED FOR DISCUSSION	SUBMITTED FOR PRE-APP	REVISED FOR DISCUSSION	GENERAL ISSUE	SUBMITTED FOR PLANNING			24.01	