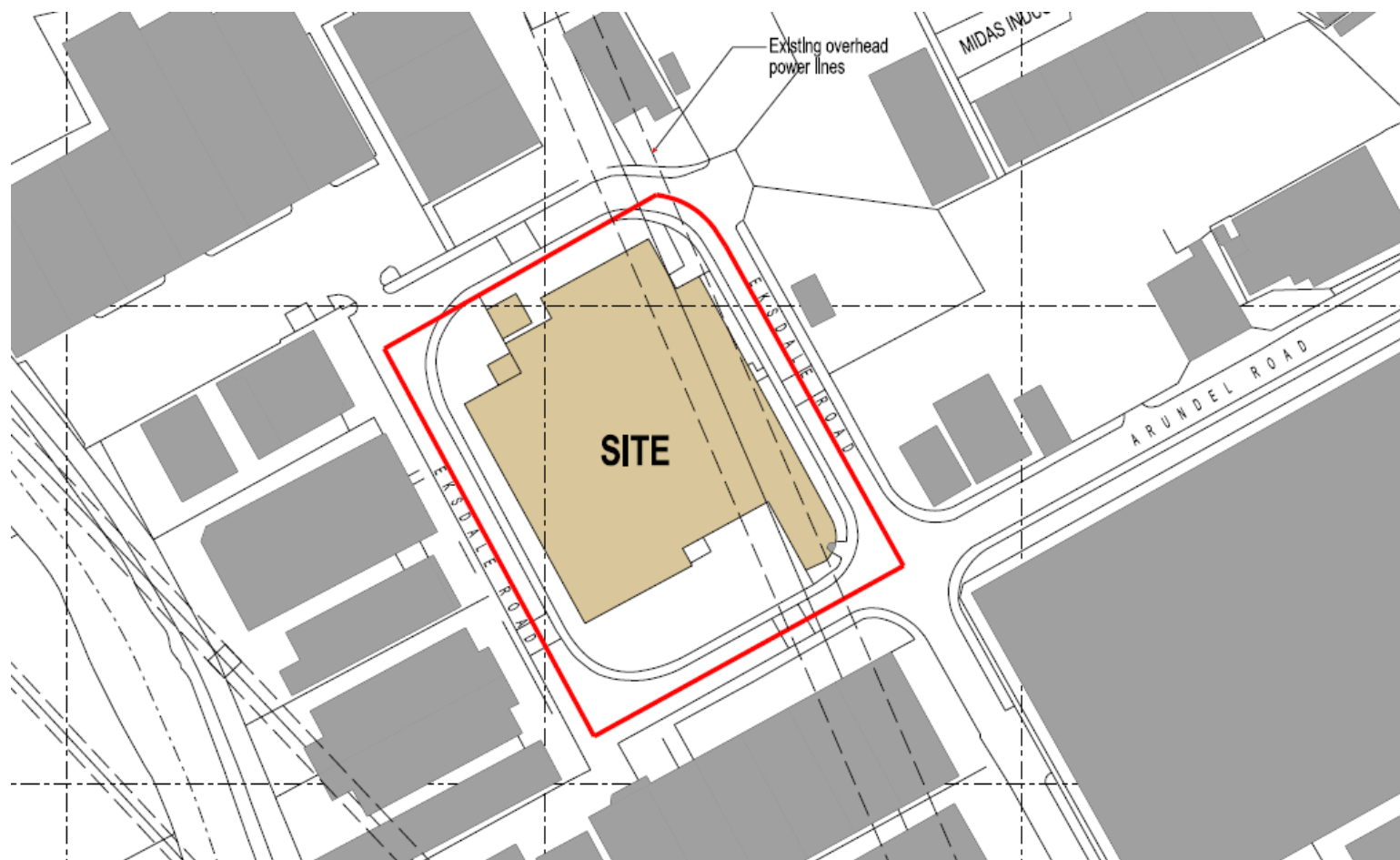


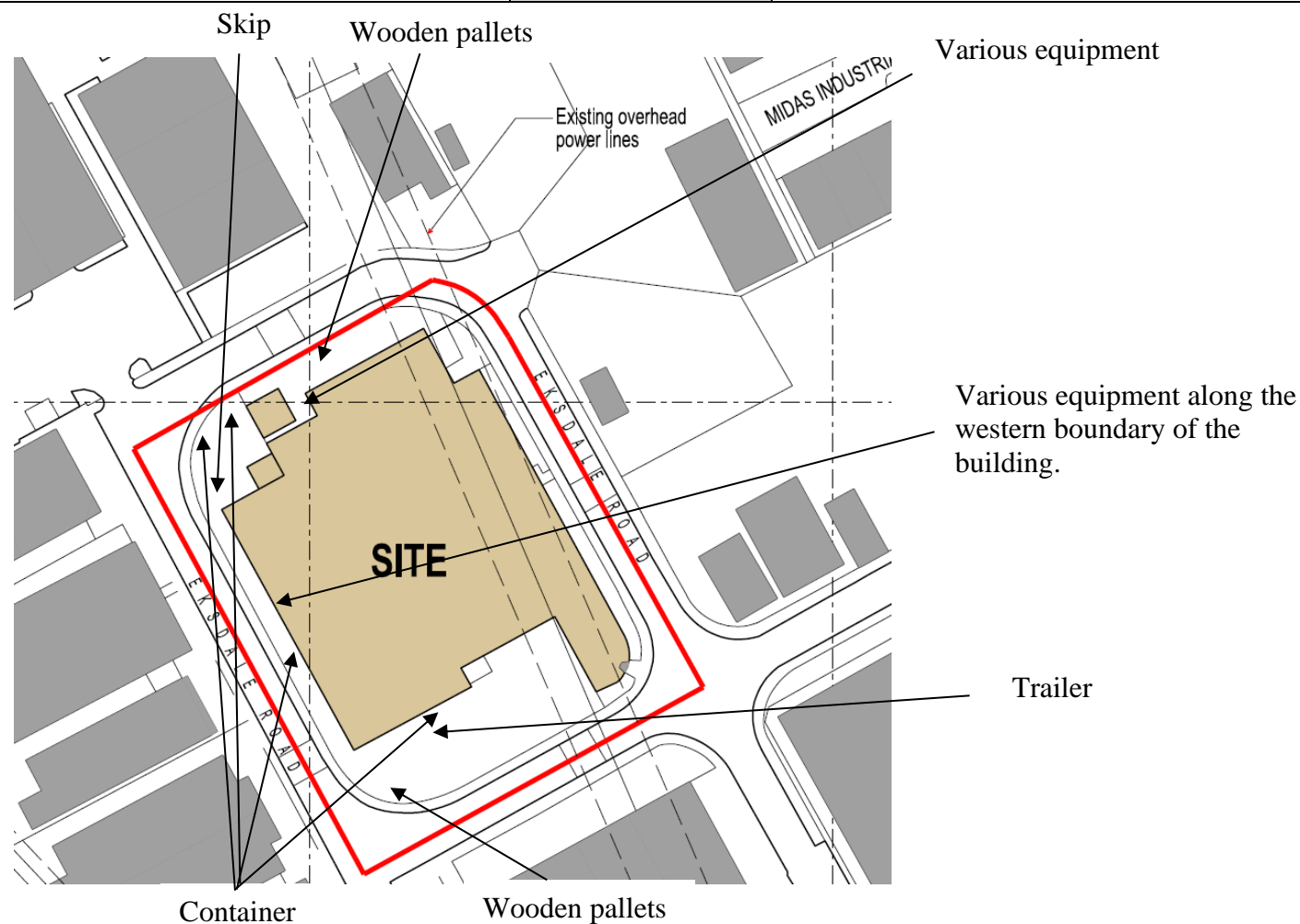
## APPENDICES

## **APPENDIX 1 – FIGURES**

<b>PROJECT NAME</b>	Island Site, Eskdale Road, Uxbridge, UB8 2RT	<b>CLIENT</b>	Global Exhibitions Limited
<b>TITLE</b>	Site Constraints Plan	<b>PROJECT NO.</b>	P6078J3073
<b>DATE</b>	August 2024	<b>FIGURE NO.</b>	1



<b>PROJECT NAME</b>	Island Site, Eskdale Road, Uxbridge, UB8 2RT	<b>CLIENT</b>	Global Exhibitions Limited
<b>TITLE</b>	Site Constraints Plan	<b>PROJECT NO.</b>	P6078J3073
<b>DATE</b>	August 2024	<b>FIGURE NO.</b>	2





<b>PROJECT NAME</b>	Island Site, Eskdale Road, Uxbridge, UB8 2RT	<b>CLIENT</b>	Global Exhibitions Limited
<b>TITLE</b>	Photo Plan	<b>FIGURE</b>	3
<b>Photo 1:</b> Access from Eskdale Road, viewed towards the south.		<b>Photo 2:</b> A container and a trailer are present towards the south of the site, viewed towards the east.	
			



<b>PROJECT NAME</b>	Island Site, Eskdale Road, Uxbridge, UB8 2RT	<b>CLIENT</b>	Global Exhibitions Limited
<b>TITLE</b>	Photo Plan	<b>FIGURE</b>	3
<b>Photo 3:</b> View of the site from the southwest, viewed towards the west.		<b>Photo 4:</b> View of the site from the southwest, viewed towards the northwest.	
			



<b>PROJECT NAME</b>	Island Site, Eskdale Road, Uxbridge, UB8 2RT	<b>CLIENT</b>	Global Exhibitions Limited
<b>TITLE</b>	Photo Plan	<b>FIGURE</b>	3
<b>Photo 5:</b> View of the site from the north, viewed towards the west.		<b>Photo 6:</b> View of a large tent containing equipment present towards the north of the site.	
			



<b>PROJECT NAME</b>	Island Site, Eskdale Road, Uxbridge, UB8 2RT	<b>CLIENT</b>	Global Exhibitions Limited
<b>TITLE</b>	Photo Plan	<b>FIGURE</b>	3
<b>Photo 7:</b> Access present towards the northwest of the site.		<b>Photo 8:</b> View of the site from the north, viewed towards the northeast.	
			


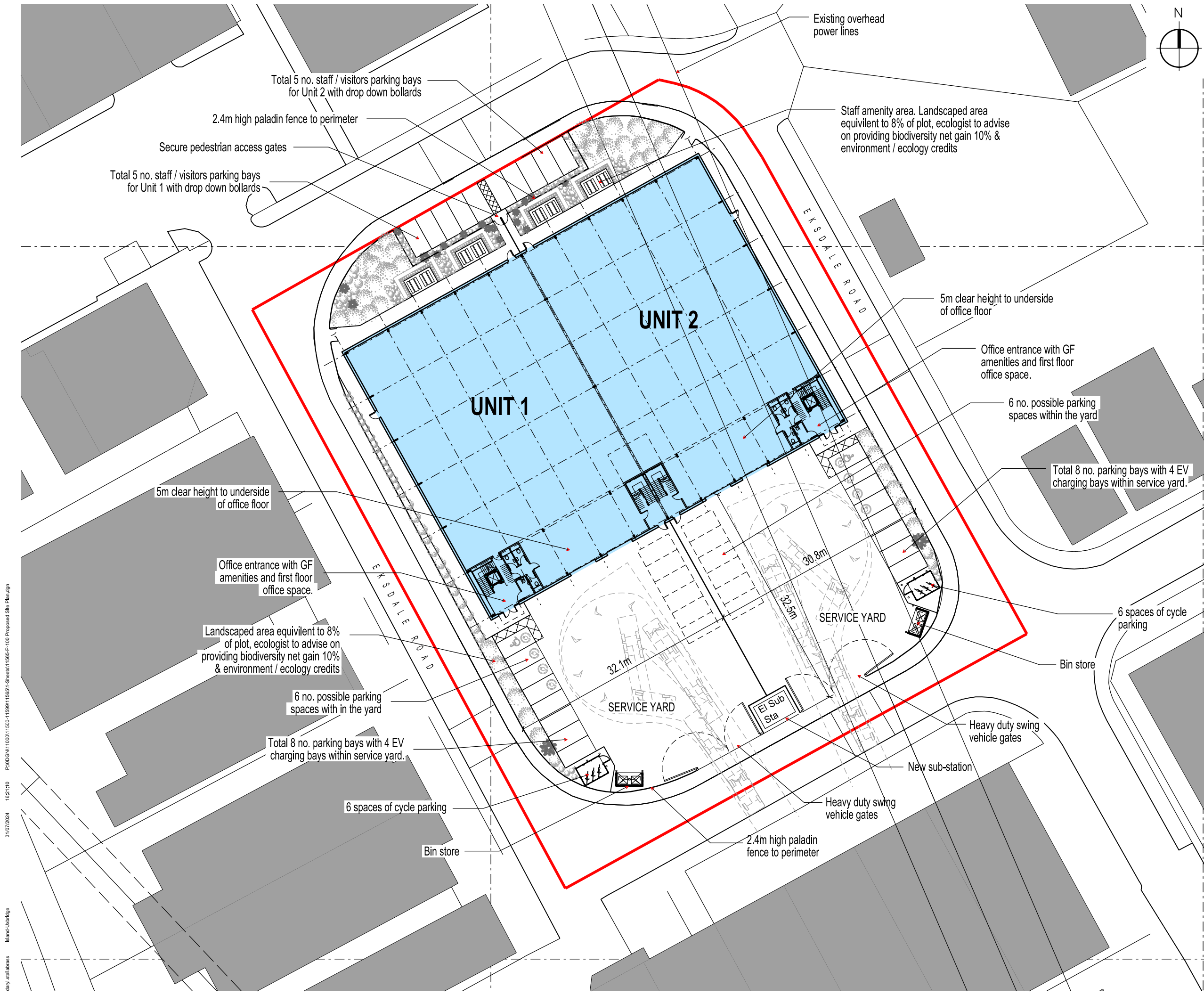
<b>PROJECT NAME</b>	Island Site, Eskdale Road, Uxbridge, UB8 2RT	<b>CLIENT</b>	Global Exhibitions Limited
<b>TITLE</b>	Photo Plan	<b>FIGURE</b>	3
<b>Photo 9:</b> View along the western boundary of the site, viewed towards the south.		<b>Photo 10:</b>	
			



Figure 4a: Proposed Site Plan (Draft)



THIS DRAWING IS PROTECTED BY COPYRIGHT AND MUST NOT BE COPIED OR REPRODUCED WITHOUT THE WRITTEN CONSENT OF R G PARTNERSHIP LIMITED.

0m 5m 10m 15m 20m 25m 30m

SCALE

APPLICATION BOUNDARY

**DRAFT**

REV.	DATE	NOTES	INIT.

CLIENT / PROJECT

**PJN PROPERTIES LTD.**

**ISLAND SITE, EKSDALE ROAD**

**UB8 2RT, UXBRIDGE**

DRAWING TITLE

**PROPOSED SITE PLAN**

STATUS

**PLANNING**

DATE	DRAWN	SCALE @ A3
22.07.2024	JT	1:500

PROJECT NUMBER	UNIT / BLOCK	CI / SFB CODE	TYPE & NUMBER	REVISION LETTER

DRAWING NO.

11565	P	100	-
-------	---	-----	---

Site Location Plans	L	GA Plans	P	Elevations	E
Sections	S	Details	D	Prefix: Colour	C

**THE RATCLIFFE GROVES PARTNERSHIP**

**LONDON**

19 BEDFORD ROW

LONDON WC1R 4EB

T. 020 7600 6666 E. london@rgp.uk.com

www.rgp.uk.com

MANCHESTER

105 MANCHESTER ROAD

BURY, LANCASHIRE BL9 0TD

T. 0161 797 6000 E. manchester@rgp.uk.com

31/07/2024 16:21:10 P:\000001100011500-1159911565-P-100 Proposed Site Plan.dgn

daylatalabass

Island-Uxbridge

Figure 4b: Proposed Ground Floor Plan (Draft)

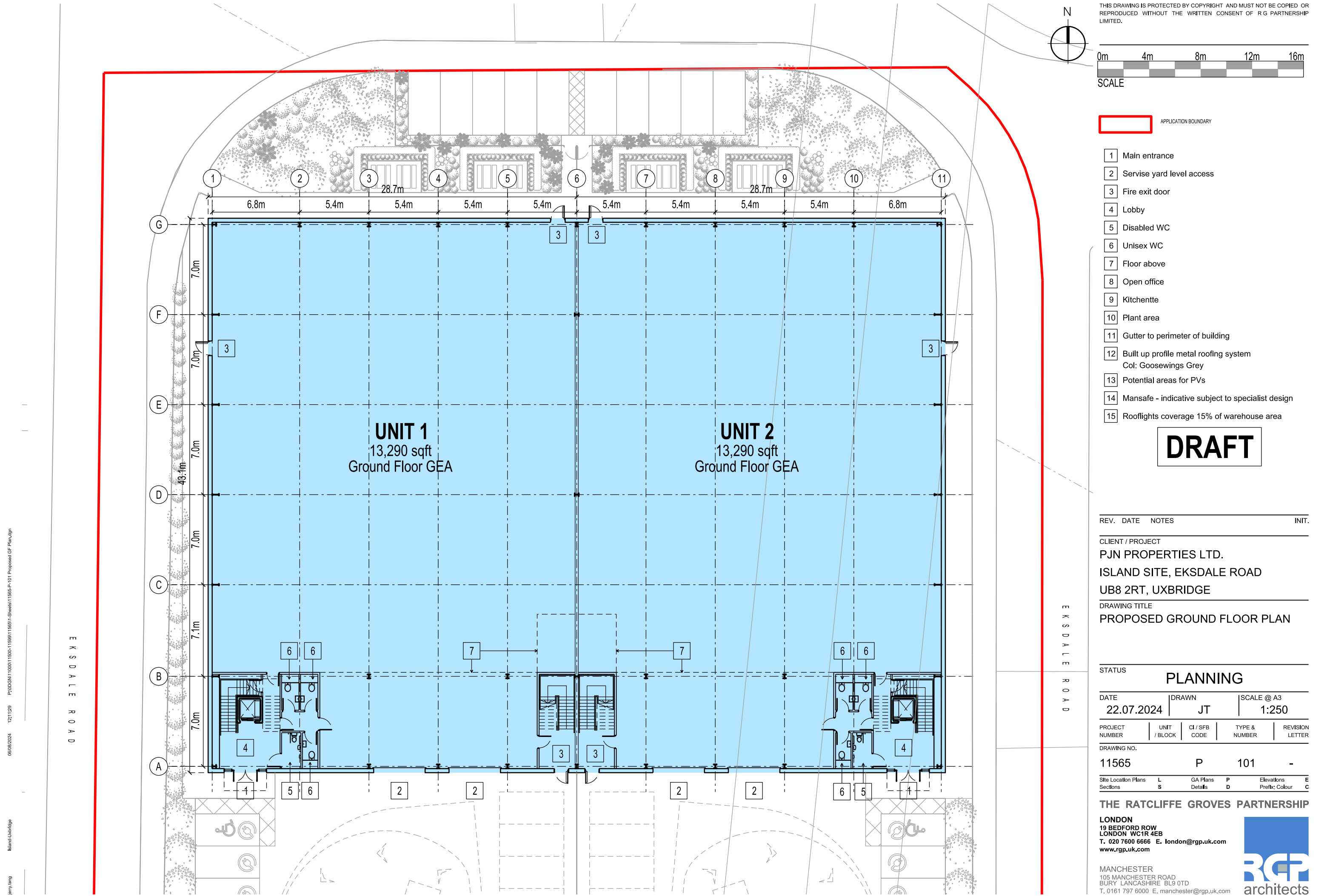


Figure 4c: Proposed First Floor Plan (Draft)

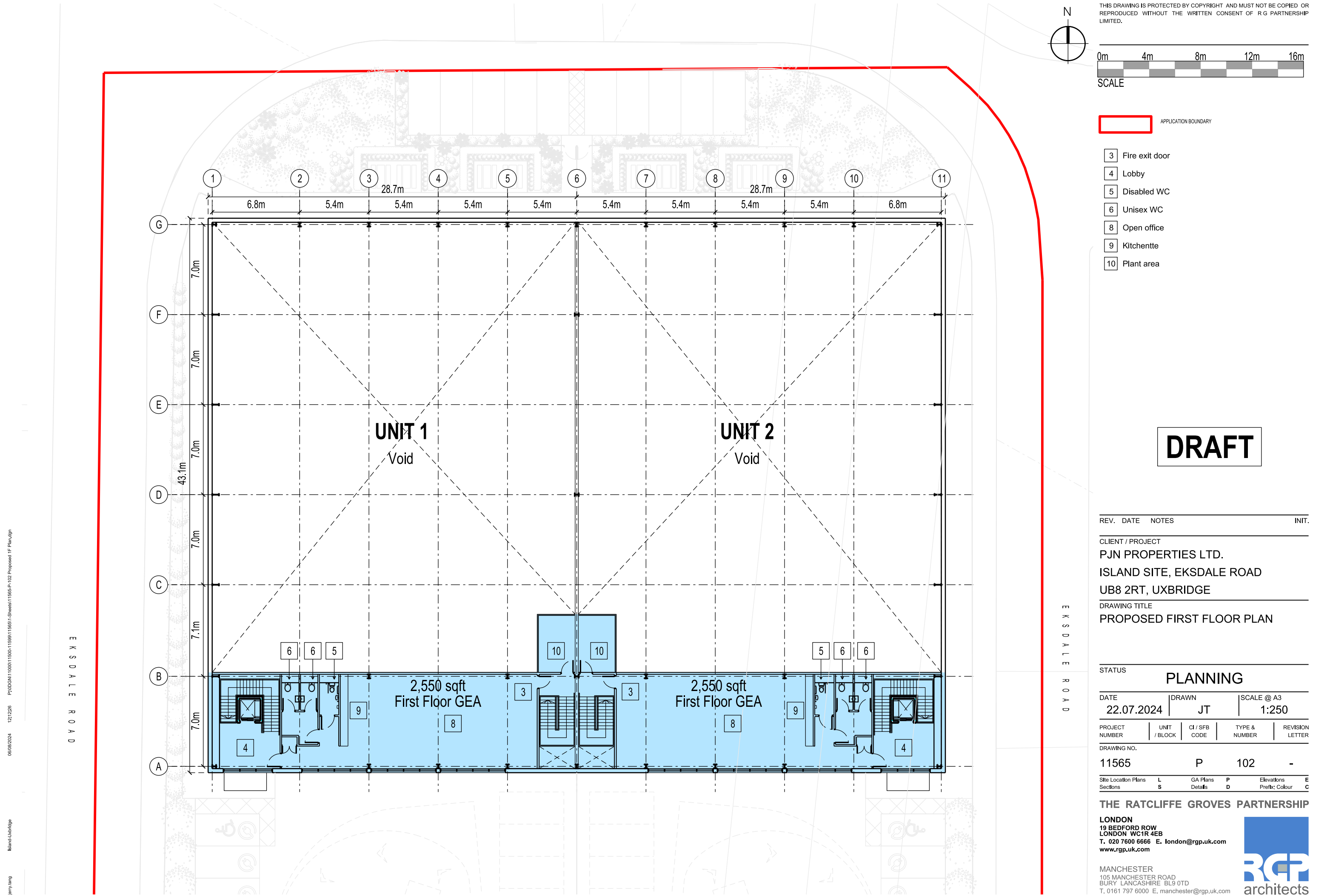
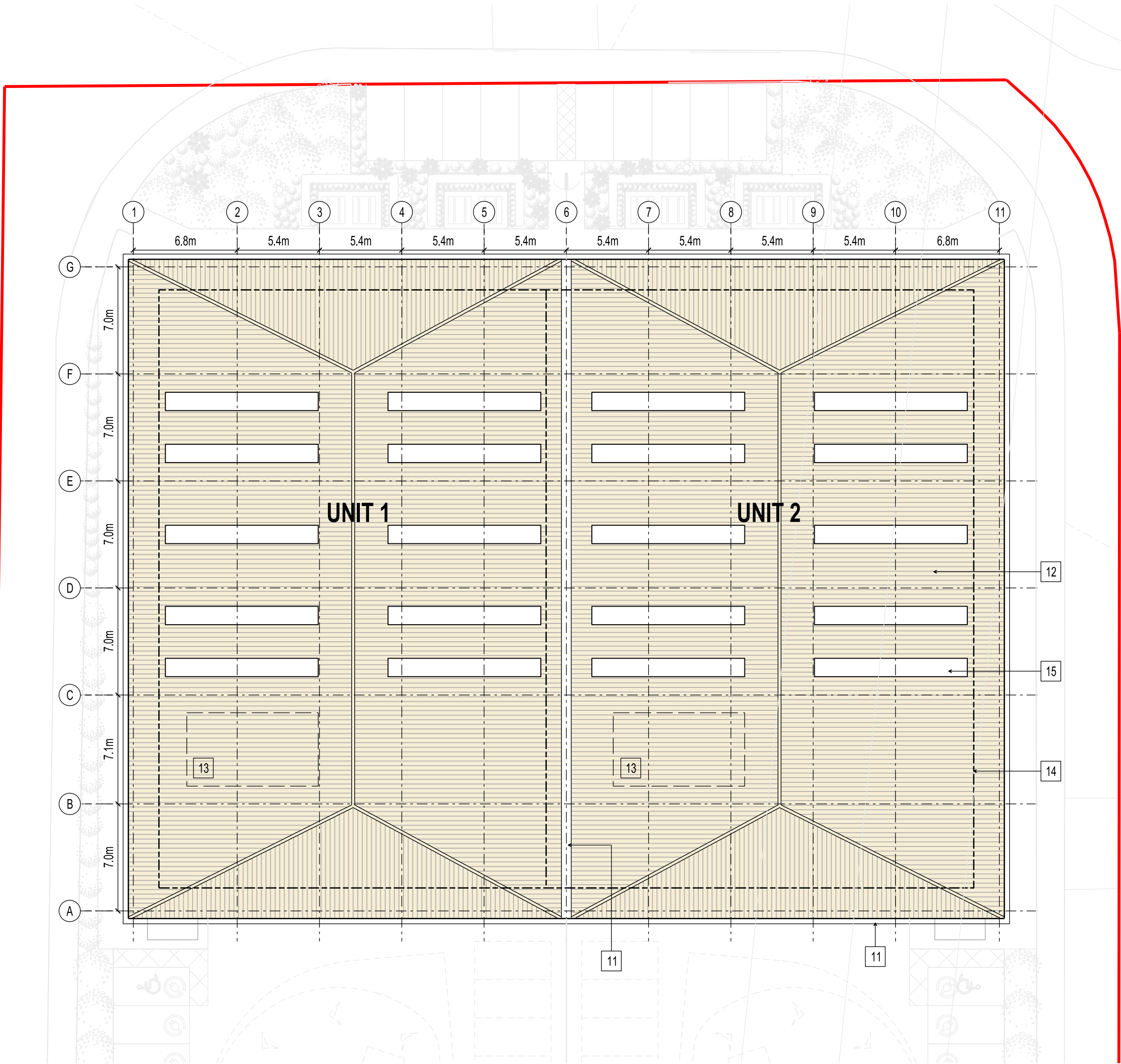




Figure 4d: Proposed Roof Plan (Draft)



DRAFT

REV. DATE NOTES INIT.

CLIENT / PROJECT  
PJN PROPERTIES LTD.  
ISLAND SITE, EKSDALE ROAD  
UB8 2RT, UXBRIDGE  
DRAWING TITLE  
PROPOSED ROOF PLAN

STATUS  
PLANNING

DATE 22.07.2024 DRAWN JT SCALE @ A3 1:250

PROJECT UNIT CI / SFB TYPE & REVISION  
NUMBER / BLOCK CODE NUMBER LETTER

DRAWING NO.  
11565 P 103 -

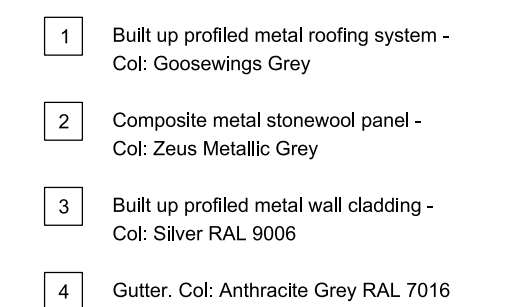
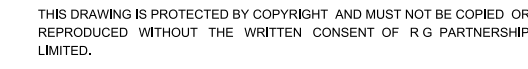
Site Location Plans L GA Plans P Elevations E  
Sections S Details D Prefix Colour C

THE RATCLIFFE GROVES PARTNERSHIP  
LONDON  
19 BEDFORD ROW  
LONDON WC1R 4EB  
T. 020 7600 6666 E. london@rgp.uk.com  
www.rgp.uk.com

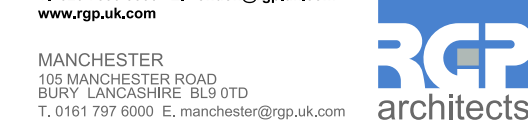
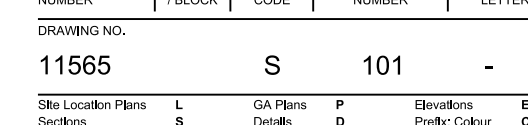
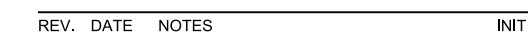
MANCHESTER  
105 MANCHESTER ROAD  
BURY LANCASHIRE BL9 0TD  
T. 0161 797 6000 E. manchester@rgp.uk.com



Jerry Tang	Marek Jurek	06-08-2024	12:13:22	P=200M;1100011500;1199911999;1-Spreads;11585-8-171 Piv Search
------------	-------------	------------	----------	---



jerry.tang	Marek.Jurczyk	727322	P-200M-1100611906-1199911899J.-S.reeds@1568-8-311 Piv Bezudyn
------------	---------------	--------	---



## **APPENDIX 2 – GROUNDSURE REPORT**



ISLAND SITE, ESKDALE ROAD, UXBRIDGE INDUSTRIAL ESTATE, HILLINGDON, UB8 2RT

## Order Details

**Date:** 06/08/2024  
**Your ref:** P6078J3073 - Island Site Eskdale Rd  
**Our Ref:** GS-MQK-1HU-M55-44Z

## Site Details

**Location:** 504619 183170  
**Area:** 0.58 ha  
**Authority:** [London Borough of Hillingdon](#) ↗



© Crown copyright and database rights 2024. Ordnance Survey licence 100035207

[Summary of findings](#)

[p. 2 >](#) [Aerial image](#)

[p. 9 >](#)

[OS MasterMap site plan](#)

[p.14 >](#) [Insight User Guide](#) ↗

Contact us with any questions at:

[info@groundsure.com](mailto:info@groundsure.com) ↗

01273 257 755

## Summary of findings

Page	Section	<a href="#">Past land use &gt;</a>	On site	0-50m	50-250m	250-500m	500-2000m
<a href="#">15 &gt;</a>	<a href="#">1.1 &gt;</a>	<a href="#">Historical industrial land uses &gt;</a>	1	2	25	104	-
<a href="#">20 &gt;</a>	<a href="#">1.2 &gt;</a>	<a href="#">Historical tanks &gt;</a>	0	0	0	85	-
<a href="#">24 &gt;</a>	<a href="#">1.3 &gt;</a>	<a href="#">Historical energy features &gt;</a>	2	2	19	53	-
27	1.4	Historical petrol stations	0	0	0	0	-
<a href="#">27 &gt;</a>	<a href="#">1.5 &gt;</a>	<a href="#">Historical garages &gt;</a>	0	0	6	3	-
28	1.6	Historical military land	0	0	0	0	-
Page	Section	<a href="#">Past land use - un-grouped &gt;</a>	On site	0-50m	50-250m	250-500m	500-2000m
<a href="#">29 &gt;</a>	<a href="#">2.1 &gt;</a>	<a href="#">Historical industrial land uses &gt;</a>	2	4	33	126	-
<a href="#">35 &gt;</a>	<a href="#">2.2 &gt;</a>	<a href="#">Historical tanks &gt;</a>	0	0	0	118	-
<a href="#">40 &gt;</a>	<a href="#">2.3 &gt;</a>	<a href="#">Historical energy features &gt;</a>	4	4	37	70	-
44	2.4	Historical petrol stations	0	0	0	0	-
<a href="#">45 &gt;</a>	<a href="#">2.5 &gt;</a>	<a href="#">Historical garages &gt;</a>	0	0	7	3	-
Page	Section	<a href="#">Waste and landfill &gt;</a>	On site	0-50m	50-250m	250-500m	500-2000m
46	3.1	Active or recent landfill	0	0	0	0	-
<a href="#">46 &gt;</a>	<a href="#">3.2 &gt;</a>	<a href="#">Historical landfill (BGS records) &gt;</a>	0	0	0	3	-
47	3.3	Historical landfill (LA/mapping records)	0	0	0	0	-
<a href="#">47 &gt;</a>	<a href="#">3.4 &gt;</a>	<a href="#">Historical landfill (EA/NRW records) &gt;</a>	0	0	5	1	-
<a href="#">48 &gt;</a>	<a href="#">3.5 &gt;</a>	<a href="#">Historical waste sites &gt;</a>	0	0	1	1	-
<a href="#">49 &gt;</a>	<a href="#">3.6 &gt;</a>	<a href="#">Licensed waste sites &gt;</a>	0	0	0	9	-
<a href="#">52 &gt;</a>	<a href="#">3.7 &gt;</a>	<a href="#">Waste exemptions &gt;</a>	0	0	8	9	-
Page	Section	<a href="#">Current industrial land use &gt;</a>	On site	0-50m	50-250m	250-500m	500-2000m
<a href="#">54 &gt;</a>	<a href="#">4.1 &gt;</a>	<a href="#">Recent industrial land uses &gt;</a>	4	7	63	-	-
<a href="#">59 &gt;</a>	<a href="#">4.2 &gt;</a>	<a href="#">Current or recent petrol stations &gt;</a>	0	0	0	1	-
<a href="#">59 &gt;</a>	<a href="#">4.3 &gt;</a>	<a href="#">Electricity cables &gt;</a>	0	0	14	14	-
62	4.4	Gas pipelines	0	0	0	0	-
62	4.5	Sites determined as Contaminated Land	0	0	0	0	-



<a href="#">62</a> >	<a href="#">4.6</a> >	<a href="#">Control of Major Accident Hazards (COMAH)</a> >	0	0	0	2	-
62	4.7	Regulated explosive sites	0	0	0	0	-
63	4.8	Hazardous substance storage/usage	0	0	0	0	-
<a href="#">63</a> >	<a href="#">4.9</a> >	<a href="#">Historical licensed industrial activities (IPC)</a> >	0	0	2	0	-
<a href="#">63</a> >	<a href="#">4.10</a> >	<a href="#">Licensed industrial activities (Part A(1))</a> >	0	2	0	2	-
<a href="#">64</a> >	<a href="#">4.11</a> >	<a href="#">Licensed pollutant release (Part A(2)/B)</a> >	0	3	4	3	-
66	4.12	Radioactive Substance Authorisations	0	0	0	0	-
<a href="#">66</a> >	<a href="#">4.13</a> >	<a href="#">Licensed Discharges to controlled waters</a> >	0	0	3	9	-
68	4.14	Pollutant release to surface waters (Red List)	0	0	0	0	-
<a href="#">68</a> >	<a href="#">4.15</a> >	<a href="#">Pollutant release to public sewer</a> >	0	0	3	0	-
<a href="#">68</a> >	<a href="#">4.16</a> >	<a href="#">List 1 Dangerous Substances</a> >	0	1	3	0	-
<a href="#">69</a> >	<a href="#">4.17</a> >	<a href="#">List 2 Dangerous Substances</a> >	0	0	0	1	-
<a href="#">69</a> >	<a href="#">4.18</a> >	<a href="#">Pollution Incidents (EA/NRW)</a> >	0	0	7	2	-
70	4.19	Pollution inventory substances	0	0	0	0	-
<a href="#">71</a> >	<a href="#">4.20</a> >	<a href="#">Pollution inventory waste transfers</a> >	0	0	0	1	-
71	4.21	Pollution inventory radioactive waste	0	0	0	0	-
Page	Section	<a href="#">Hydrogeology</a> >	On site	0-50m	50-250m	250-500m	500-2000m
<a href="#">72</a> >	<a href="#">5.1</a> >	<a href="#">Superficial aquifer</a> >	Identified (within 500m)				
<a href="#">74</a> >	<a href="#">5.2</a> >	<a href="#">Bedrock aquifer</a> >	Identified (within 500m)				
<a href="#">76</a> >	<a href="#">5.3</a> >	<a href="#">Groundwater vulnerability</a> >	Identified (within 50m)				
77	5.4	Groundwater vulnerability- soluble rock risk	None (within 0m)				
<a href="#">77</a> >	<a href="#">5.5</a> >	<a href="#">Groundwater vulnerability- local information</a> >	Identified (within 0m)				
<a href="#">78</a> >	<a href="#">5.6</a> >	<a href="#">Groundwater abstractions</a> >	0	0	0	2	21
<a href="#">83</a> >	<a href="#">5.7</a> >	<a href="#">Surface water abstractions</a> >	0	0	0	0	3
84	5.8	Potable abstractions	0	0	0	0	0
85	5.9	Source Protection Zones	0	0	0	0	-
85	5.10	Source Protection Zones (confined aquifer)	0	0	0	0	-
Page	Section	<a href="#">Hydrology</a> >	On site	0-50m	50-250m	250-500m	500-2000m
<a href="#">86</a> >	<a href="#">6.1</a> >	<a href="#">Water Network (OS MasterMap)</a> >	0	0	10	-	-





<a href="#">87 &gt;</a>	<a href="#">6.2 &gt;</a>	<a href="#">Surface water features &gt;</a>	0	0	3	-	-
<a href="#">88 &gt;</a>	<a href="#">6.3 &gt;</a>	<a href="#">WFD Surface water body catchments &gt;</a>	1	-	-	-	-
<a href="#">88 &gt;</a>	<a href="#">6.4 &gt;</a>	<a href="#">WFD Surface water bodies &gt;</a>	0	0	1	-	-
<a href="#">88 &gt;</a>	<a href="#">6.5 &gt;</a>	<a href="#">WFD Groundwater bodies &gt;</a>	1	-	-	-	-
Page	Section	<a href="#">River and coastal flooding &gt;</a>	On site	0-50m	50-250m	250-500m	500-2000m
90	7.1	Risk of flooding from rivers and the sea	None (within 50m)				
<a href="#">91 &gt;</a>	<a href="#">7.2 &gt;</a>	<a href="#">Historical Flood Events &gt;</a>	0	0	2	-	-
91	7.3	Flood Defences	0	0	0	-	-
91	7.4	Areas Benefiting from Flood Defences	0	0	0	-	-
92	7.5	Flood Storage Areas	0	0	0	-	-
93	7.6	Flood Zone 2	None (within 50m)				
93	7.7	Flood Zone 3	None (within 50m)				
Page	Section	<a href="#">Surface water flooding &gt;</a>					
<a href="#">94 &gt;</a>	<a href="#">8.1 &gt;</a>	<a href="#">Surface water flooding &gt;</a>	1 in 30 year, 0.3m - 1.0m (within 50m)				
Page	Section	<a href="#">Groundwater flooding &gt;</a>					
<a href="#">96 &gt;</a>	<a href="#">9.1 &gt;</a>	<a href="#">Groundwater flooding &gt;</a>	Moderate (within 50m)				
Page	Section	<a href="#">Environmental designations &gt;</a>	On site	0-50m	50-250m	250-500m	500-2000m
<a href="#">97 &gt;</a>	<a href="#">10.1 &gt;</a>	<a href="#">Sites of Special Scientific Interest (SSSI) &gt;</a>	0	0	0	0	1
98	10.2	Conserved wetland sites (Ramsar sites)	0	0	0	0	0
98	10.3	Special Areas of Conservation (SAC)	0	0	0	0	0
98	10.4	Special Protection Areas (SPA)	0	0	0	0	0
98	10.5	National Nature Reserves (NNR)	0	0	0	0	0
99	10.6	Local Nature Reserves (LNR)	0	0	0	0	0
<a href="#">99 &gt;</a>	<a href="#">10.7 &gt;</a>	<a href="#">Designated Ancient Woodland &gt;</a>	0	0	0	0	5
99	10.8	Biosphere Reserves	0	0	0	0	0
100	10.9	Forest Parks	0	0	0	0	0
100	10.10	Marine Conservation Zones	0	0	0	0	0
<a href="#">100 &gt;</a>	<a href="#">10.11 &gt;</a>	<a href="#">Green Belt &gt;</a>	0	0	2	1	6
101	10.12	Proposed Ramsar sites	0	0	0	0	0



101	10.13	Possible Special Areas of Conservation (pSAC)	0	0	0	0	0
101	10.14	Potential Special Protection Areas (pSPA)	0	0	0	0	0
101	10.15	Nitrate Sensitive Areas	0	0	0	0	0
102	10.16	Nitrate Vulnerable Zones	0	0	0	0	0
<a href="#">103</a> >	<a href="#">10.17</a> >	<a href="#">SSSI Impact Risk Zones</a> >	1	-	-	-	-
<a href="#">104</a> >	<a href="#">10.18</a> >	<a href="#">SSSI Units</a> >	0	0	0	0	1
Page	Section	Visual and cultural designations	On site	0-50m	50-250m	250-500m	500-2000m
105	11.1	World Heritage Sites	0	0	0	-	-
105	11.2	Area of Outstanding Natural Beauty	0	0	0	-	-
105	11.3	National Parks	0	0	0	-	-
105	11.4	Listed Buildings	0	0	0	-	-
106	11.5	Conservation Areas	0	0	0	-	-
106	11.6	Scheduled Ancient Monuments	0	0	0	-	-
106	11.7	Registered Parks and Gardens	0	0	0	-	-
Page	Section	<a href="#">Agricultural designations</a> >	On site	0-50m	50-250m	250-500m	500-2000m
<a href="#">107</a> >	<a href="#">12.1</a> >	<a href="#">Agricultural Land Classification</a> >	Urban (within 250m)				
<a href="#">108</a> >	<a href="#">12.2</a> >	<a href="#">Open Access Land</a> >	0	0	1	-	-
108	12.3	Tree Felling Licences	0	0	0	-	-
109	12.4	Environmental Stewardship Schemes	0	0	0	-	-
109	12.5	Countryside Stewardship Schemes	0	0	0	-	-
Page	Section	<a href="#">Habitat designations</a> >	On site	0-50m	50-250m	250-500m	500-2000m
<a href="#">110</a> >	<a href="#">13.1</a> >	<a href="#">Priority Habitat Inventory</a> >	0	0	10	-	-
111	13.2	Habitat Networks	0	0	0	-	-
<a href="#">111</a> >	<a href="#">13.3</a> >	<a href="#">Open Mosaic Habitat</a> >	0	0	2	-	-
112	13.4	Limestone Pavement Orders	0	0	0	-	-
Page	Section	<a href="#">Geology 1:10,000 scale</a> >	On site	0-50m	50-250m	250-500m	500-2000m
<a href="#">113</a> >	<a href="#">14.1</a> >	<a href="#">10k Availability</a> >	Identified (within 500m)				
<a href="#">114</a> >	<a href="#">14.2</a> >	<a href="#">Artificial and made ground (10k)</a> >	0	0	7	5	-
<a href="#">116</a> >	<a href="#">14.3</a> >	<a href="#">Superficial geology (10k)</a> >	1	0	4	3	-



117	14.4	Landslip (10k)	0	0	0	0	-
<a href="#">118 &gt;</a>	<a href="#">14.5 &gt;</a>	<a href="#">Bedrock geology (10k) &gt;</a>	1	0	1	1	-
119	14.6	Bedrock faults and other linear features (10k)	0	0	0	0	-
Page	Section	<a href="#">Geology 1:50,000 scale &gt;</a>	On site	0-50m	50-250m	250-500m	500-2000m
<a href="#">120 &gt;</a>	<a href="#">15.1 &gt;</a>	<a href="#">50k Availability &gt;</a>	Identified (within 500m)				
<a href="#">121 &gt;</a>	<a href="#">15.2 &gt;</a>	<a href="#">Artificial and made ground (50k) &gt;</a>	0	0	4	1	-
122	15.3	Artificial ground permeability (50k)	0	0	-	-	-
<a href="#">123 &gt;</a>	<a href="#">15.4 &gt;</a>	<a href="#">Superficial geology (50k) &gt;</a>	1	0	2	0	-
<a href="#">124 &gt;</a>	<a href="#">15.5 &gt;</a>	<a href="#">Superficial permeability (50k) &gt;</a>	Identified (within 50m)				
124	15.6	Landslip (50k)	0	0	0	0	-
124	15.7	Landslip permeability (50k)	None (within 50m)				
<a href="#">125 &gt;</a>	<a href="#">15.8 &gt;</a>	<a href="#">Bedrock geology (50k) &gt;</a>	1	0	1	0	-
<a href="#">126 &gt;</a>	<a href="#">15.9 &gt;</a>	<a href="#">Bedrock permeability (50k) &gt;</a>	Identified (within 50m)				
126	15.10	Bedrock faults and other linear features (50k)	0	0	0	0	-
Page	Section	<a href="#">Boreholes &gt;</a>	On site	0-50m	50-250m	250-500m	500-2000m
<a href="#">127 &gt;</a>	<a href="#">16.1 &gt;</a>	<a href="#">BGS Boreholes &gt;</a>	0	1	2	-	-
Page	Section	<a href="#">Natural ground subsidence &gt;</a>					
<a href="#">129 &gt;</a>	<a href="#">17.1 &gt;</a>	<a href="#">Shrink swell clays &gt;</a>	Very low (within 50m)				
<a href="#">130 &gt;</a>	<a href="#">17.2 &gt;</a>	<a href="#">Running sands &gt;</a>	Low (within 50m)				
<a href="#">131 &gt;</a>	<a href="#">17.3 &gt;</a>	<a href="#">Compressible deposits &gt;</a>	Moderate (within 50m)				
<a href="#">132 &gt;</a>	<a href="#">17.4 &gt;</a>	<a href="#">Collapsible deposits &gt;</a>	Negligible (within 50m)				
<a href="#">133 &gt;</a>	<a href="#">17.5 &gt;</a>	<a href="#">Landslides &gt;</a>	Very low (within 50m)				
<a href="#">134 &gt;</a>	<a href="#">17.6 &gt;</a>	<a href="#">Ground dissolution of soluble rocks &gt;</a>	Negligible (within 50m)				
Page	Section	<a href="#">Mining and ground workings &gt;</a>	On site	0-50m	50-250m	250-500m	500-2000m
<a href="#">136 &gt;</a>	<a href="#">18.1 &gt;</a>	<a href="#">BritPits &gt;</a>	0	0	1	2	-
<a href="#">137 &gt;</a>	<a href="#">18.2 &gt;</a>	<a href="#">Surface ground workings &gt;</a>	0	0	21	-	-
138	18.3	Underground workings	0	0	0	0	0
138	18.4	Underground mining extents	0	0	0	0	-
<a href="#">139 &gt;</a>	<a href="#">18.5 &gt;</a>	<a href="#">Historical Mineral Planning Areas &gt;</a>	0	0	2	0	-



<a href="#">139</a> >	<a href="#">18.6</a> >	<a href="#">Non-coal mining</a> >	0	0	0	0	2
140	18.7	JPB mining areas	None (within 0m)				
140	18.8	The Coal Authority non-coal mining	0	0	0	0	-
<a href="#">140</a> >	<a href="#">18.9</a> >	<a href="#">Researched mining</a> >	0	0	2	0	-
140	18.10	Mining record office plans	0	0	0	0	-
141	18.11	BGS mine plans	0	0	0	0	-
141	18.12	Coal mining	None (within 0m)				
141	18.13	Brine areas	None (within 0m)				
141	18.14	Gypsum areas	None (within 0m)				
141	18.15	Tin mining	None (within 0m)				
142	18.16	Clay mining	None (within 0m)				
Page	Section	Ground cavities and sinkholes	On site	0-50m	50-250m	250-500m	500-2000m
143	19.1	Natural cavities	0	0	0	0	-
143	19.2	Mining cavities	0	0	0	0	0
143	19.3	Reported recent incidents	0	0	0	0	-
143	19.4	Historical incidents	0	0	0	0	-
144	19.5	National karst database	0	0	0	0	-
Page	Section	<a href="#">Radon</a> >					
<a href="#">145</a> >	<a href="#">20.1</a> >	<a href="#">Radon</a> >	Less than 1% (within 0m)				
Page	Section	<a href="#">Soil chemistry</a> >	On site	0-50m	50-250m	250-500m	500-2000m
<a href="#">147</a> >	<a href="#">21.1</a> >	<a href="#">BGS Estimated Background Soil Chemistry</a> >	1	0	-	-	-
<a href="#">147</a> >	<a href="#">21.2</a> >	<a href="#">BGS Estimated Urban Soil Chemistry</a> >	4	3	-	-	-
148	21.3	BGS Measured Urban Soil Chemistry	0	0	-	-	-
Page	Section	<a href="#">Railway infrastructure and projects</a> >	On site	0-50m	50-250m	250-500m	500-2000m
149	22.1	Underground railways (London)	0	0	0	-	-
149	22.2	Underground railways (Non-London)	0	0	0	-	-
150	22.3	Railway tunnels	0	0	0	-	-
<a href="#">150</a> >	<a href="#">22.4</a> >	<a href="#">Historical railway and tunnel features</a> >	0	0	2	-	-
150	22.5	Royal Mail tunnels	0	0	0	-	-

<u>150</u> >	<u>22.6</u> >	<u>Historical railways</u> >	0	0	1	-	-
151	22.7	Railways	0	0	0	-	-
151	22.8	Crossrail 1	0	0	0	0	-
151	22.9	Crossrail 2	0	0	0	0	-
151	22.10	HS2	0	0	0	0	-

## Recent aerial photograph



Capture Date: 30/04/2022

Site Area: 0.58ha





## Recent site history - 2021 aerial photograph



Capture Date: 13/06/2021

Site Area: 0.58ha





## Recent site history - 2015 aerial photograph



Capture Date: 20/04/2015

Site Area: 0.58ha





## Recent site history - 2010 aerial photograph



Aerial photography supplied by Getmapping PLC. © Copyright Getmapping PLC 2024. All Rights Reserved

Capture Date: 01/09/2010

Site Area: 0.58ha





## Recent site history - 1999 aerial photograph



Aerial photography supplied by Getmapping PLC. © Copyright Getmapping PLC 2024. All Rights Reserved.

Capture Date: 12/10/1999

Site Area: 0.58ha





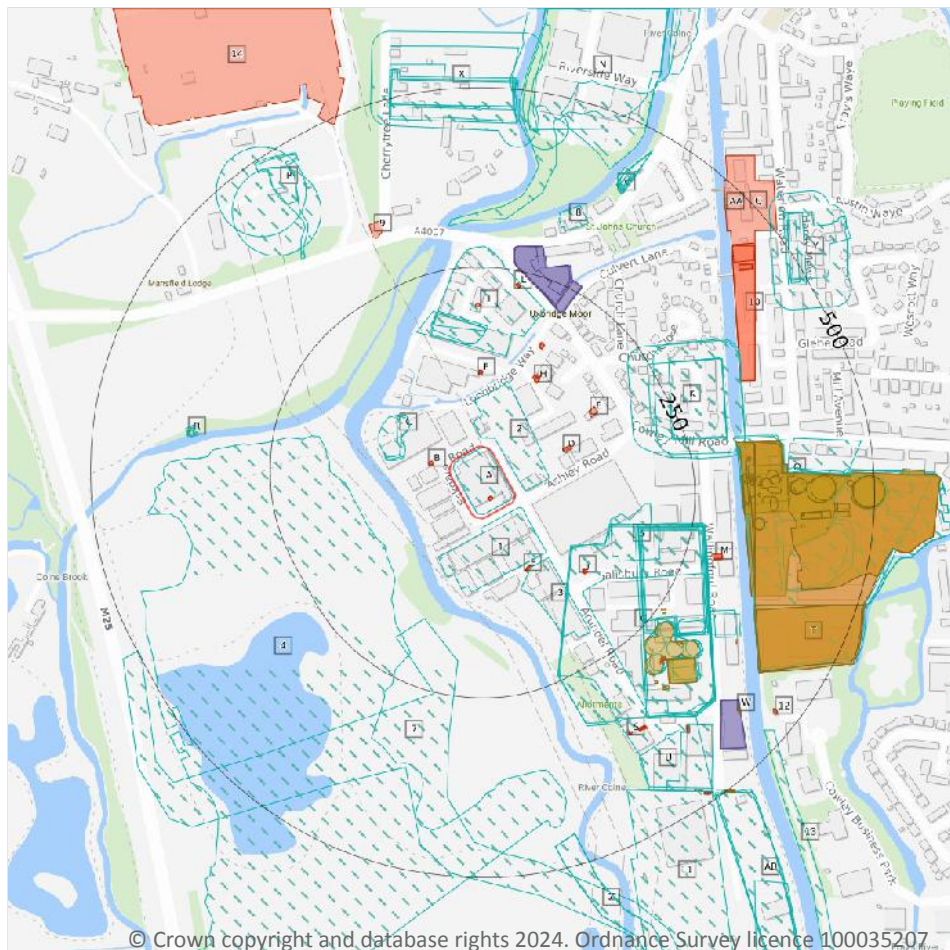
## OS MasterMap site plan



Site Area: 0.58ha



## 1 Past land use



- Site Outline
- Search buffers in metres (m)
- Historical industrial land uses
- Historical tanks
- Historical energy features
- Historical garages

### 1.1 Historical industrial land uses

Records within 500m

132

Potentially contaminative land use features digitised from historical Ordnance Survey mapping at 1:10,000 and 1:10,560 scale, intelligently grouped into contiguous features. To prevent misrepresentation of the size of historical features at any given time, features are only grouped if they have similar geometries within immediately preceding or succeeding map editions. See section 2 for a breakdown of grouping if required. Grouped and the original un-grouped features can be cross-referenced across sections 1 and 2 using the 'Group ID'.

Features are displayed on the Past land use map on [page 15 >](#)

ID	Location	Land use	Dates present	Group ID
A	On site	Unspecified Works	1974 - 1988	2208172



ID	Location	Land use	Dates present	Group ID
1	10m S	Unspecified Depot	1974 - 1988	2211551
2	13m NE	Unspecified Works	1974 - 1988	2249530
C	65m W	Refuse Heap	1935	2255972
C	66m W	Sand Pit	1938	2174138
3	91m SE	Unspecified Works	1974 - 1988	2215398
G	101m SE	Sewage Works	1938	2234092
G	103m SE	Sewage Works	1938	2273229
G	104m SE	Sewage Works	1935	2205966
4	127m SW	Gravel Pit	1974	2194080
I	130m N	Unspecified Works	1974 - 1988	2237037
5	137m E	Unspecified Works	1974 - 1988	2210301
I	143m N	Old Gravel Pit	1920	2317818
I	143m N	Old Gravel Pit	1920	2331991
G	158m SE	Unspecified Works	1974 - 1988	2240907
7	158m SW	Railway Sidings	1960	2267700
I	161m N	Old Gravel Pit	1932	2325753
G	172m E	Unspecified Tanks	1920	2315550
G	176m E	Sewage Works	1932	2238984
G	176m E	Sewage Works	1920	2235988
G	178m E	Filter Beds	1920	2317634
G	181m E	Filter Beds	1920	2226843
G	182m E	Filter Beds	1932	2300213
K	183m E	Nursery	1900	2210767
K	209m E	Nursery	1935	2238753
K	212m E	Nursery	1932	2299797
K	233m E	Nursery	1938	2214674
K	233m E	Nursery	1920	2290730
G	266m SE	Sewage Tanks	1920	2278438



ID	Location	Land use	Dates present	Group ID
G	266m SE	Sewage Tanks	1938	2316940
G	266m SE	Unspecified Tanks	1920	2212591
G	266m SE	Unspecified Tanks	1935 - 1938	2222764
G	268m SE	Unspecified Tank	1932	2190901
G	268m SE	Unspecified Tank	1932	2190902
G	285m SE	Unspecified Tanks	1938	2273652
G	289m SE	Unspecified Tank	1932	2190903
G	293m SE	Unspecified Tank	1932	2190904
G	309m SE	Sewage Tanks	1920	2216287
G	310m SE	Filter Beds	1932	2258356
G	310m SE	Filter Beds	1920	2251535
N	310m N	Unspecified Works	1960	2214225
G	312m SE	Unspecified Tank	1932	2190905
G	312m SE	Sewage Works	1895	2252712
O	313m E	Gas Works	1895	2239945
O	315m E	Gas Works	1895 - 1900	2290570
O	319m E	Gas Works	1920	2329860
O	320m E	Gas Works	1868	2252287
O	320m E	Unspecified Commercial/Industrial	1938	2303880
8	321m N	Smithy	1895	2181059
O	321m E	Gas Works	1920	2261203
G	321m SE	Sewage Works	1900	2292297
O	322m E	Unspecified Commercial/Industrial	1935 - 1938	2247706
O	323m E	Unspecified Commercial/Industrial	1932	2257346
O	326m E	Gas Works	1881	2263741
O	335m E	Gas Holder Station	1990	2188876
O	335m E	Unspecified Works	1960 - 1970	2263635
O	335m E	Gas Works	1975	2297372



ID	Location	Land use	Dates present	Group ID
O	337m E	Gasometer	1895	2239984
O	337m E	Unspecified Tank	1970 - 1975	2215152
O	337m E	Unspecified Tank	1970 - 1975	2221702
O	339m E	Unspecified Tanks	1895	2168575
O	343m E	Gasometer	1868	2241970
O	344m E	Unspecified Tanks	1868	2168574
O	345m E	Gasometer	1900	2263220
P	351m NW	Unspecified Pits	1938	2198499
O	351m E	Gasometer	1881	2246439
O	352m E	Gasometers	1881	2170778
O	353m E	Unspecified Tank	1895	2244531
R	353m W	Boat House	1900 - 1920	2331419
O	358m E	Unspecified Tank	1970 - 1975	2209539
R	358m W	Boat House	1920	2206381
O	360m E	Unspecified Tank	1920	2223108
O	360m E	Unspecified Tank	1938	2285247
R	360m W	Boat House	1895	2288072
R	360m W	Boat House	1895	2218648
O	362m E	Unspecified Tank	1932	2231470
O	362m E	Unspecified Tank	1920	2241544
O	362m E	Unspecified Tank	1935 - 1938	2252764
P	364m NW	Sandstone Pits	1932	2322166
O	365m E	Railway Sidings	1938	2247851
O	373m E	Unspecified Commercial/Industrial	1895	2253854
O	373m E	Railway Sidings	1935 - 1938	2218195
O	380m E	Gasometer	1895	2282531
O	381m E	Gas Works	1900	2256594
O	382m E	Unspecified Tank	1895	2229763





ID	Location	Land use	Dates present	Group ID
O	382m E	Unspecified Tanks	1960	2307300
O	385m E	Unspecified Tank	1938	2268711
O	385m E	Gasometer	1920	2299006
O	386m E	Unspecified Tanks	1935	2218898
U	387m SE	Unspecified Depot	1974 - 1988	2243958
O	388m E	Gasometer	1900	2269949
O	389m E	Unspecified Tank	1932	2288543
O	391m E	Unspecified Tank	1970	2242960
U	395m SE	Unspecified Works	1974 - 1988	2300319
P	398m NW	Sandstone Pits	1938	2326280
V	400m NE	Smithy	1900	2203905
V	403m NE	Smithy	1920	2327320
V	403m NE	Smithy	1920	2319169
V	407m NE	Smithy	1932	2235132
O	407m E	Unspecified Tank	1938	2270571
O	407m E	Gasometer	1920	2328433
O	410m E	Unspecified Tank	1932	2238655
V	415m NE	Smithy	1895	2218376
O	415m E	Unspecified Tanks	1960	2243676
O	415m E	Gasometer	1975 - 1990	2247854
O	415m E	Unspecified Tank	1970	2297152
X	420m N	Nursery	1932	2297254
P	422m NW	Sandstone Pits	1935	2285326
N	423m N	Unspecified Works	1974	2222119
11	427m SE	Unspecified Works	1970 - 1988	2239006
N	445m N	Unspecified Works	1935	2207580
N	446m N	Unspecified Works	1938	2317128
Y	448m NE	Nursery	1932	2320511



ID	Location	Land use	Dates present	Group ID
X	452m N	Nursery	1974	2304908
X	455m N	Nursery	1938	2314674
Z	457m S	Railway Sidings	1974	2236901
Z	457m S	Railway Sidings	1988	2274219
O	468m E	Unspecified Tank	1935 - 1938	2237555
X	469m N	Nursery	1935	2301131
O	470m E	Unspecified Tank	1938	2308035
O	471m E	Unspecified Tank	1970	2203194
O	471m E	Gasometer	1975 - 1990	2249824
O	472m E	Unspecified Tanks	1960	2168576
X	472m N	Nursery	1960	2307539
13	473m SE	Unspecified Ground Workings	1970	2163724
Y	474m NE	Railway Sidings	1960	2273831
X	474m N	Nursery	1938	2277664
Y	478m NE	Railway Sidings	1935	2288452
Y	480m NE	Nursery	1920	2225252
AB	491m SE	Refuse Heap	1938	2217002
AB	493m SE	Refuse Heap	1935	2214645
AB	495m SE	Refuse Heap	1938	2234723

*This data is sourced from Ordnance Survey / Groundsure.*

## 1.2 Historical tanks

### Records within 500m

85

Tank features digitised from historical Ordnance Survey mapping at high-detail 1:1,250 and 1:2,500 scale, intelligently grouped into contiguous features. To prevent misrepresentation of the size of historical features at any given time, features are only grouped if they have similar geometries within immediately preceding or succeeding map editions. See section 2 for a breakdown of grouping if required. Grouped and the original ungrouped features can be cross-referenced across sections 1 and 2 using the 'Group ID'.

Features are displayed on the Past land use map on [page 15 >](#)



ID	Location	Land use	Dates present	Group ID
G	254m SE	Unspecified Tank	1986	388102
G	260m SE	Unspecified Tank	1972	427118
G	260m SE	Unspecified Tank	1971	420258
G	264m SE	Tanks	1914	421816
G	300m SE	Unspecified Tank	1934	388104
G	307m SE	Tanks	1914	408119
G	308m SE	Tanks	1934	408287
O	315m E	Gas Works	1896	425958
O	315m E	Gas Works	1899	413136
O	317m E	Gas Works	1914	411775
O	317m E	Tanks	1899	410784
O	318m E	Gas Works	1866	418835
G	318m SE	Unspecified Tank	1971 - 1995	423375
O	319m E	Unspecified Tank	1896	388106
O	319m E	Unspecified Tank	1934	388108
O	320m E	Tanks	1914	415670
O	320m E	Tanks	1934	424493
O	323m E	Tanks	1896	410129
O	324m E	Gasholder Station	1989	426881
O	326m E	Gas Works	1881	399556
O	327m E	Unspecified Tank	1986	431161
O	327m E	Unspecified Tank	1963 - 1968	418160
O	328m E	Gasholder Station	1979	408438
O	328m E	Gas Works	1968	418444
O	328m E	Tanks	1986	422793
O	328m E	Unspecified Tank	1963 - 1968	417571
O	328m E	Tanks	1963 - 1968	410747
O	329m E	Unspecified Tank	1963 - 1968	418571





ID	Location	Land use	Dates present	Group ID
G	331m SE	Unspecified Tank	1914	417637
G	331m SE	Unspecified Tank	1934	431511
G	333m SE	Unspecified Tank	1963	423967
O	334m E	Gasholder Station	1988	376597
O	334m E	Gasometer	1968	382752
O	334m E	Unspecified Tank	1963	419527
O	335m E	Unspecified Tank	1976	404310
O	335m E	Unspecified Tank	1963	421740
O	336m E	Tanks	1963 - 1976	412350
O	337m E	Unspecified Tank	1934	388107
O	340m E	Gasometer	1896 - 1899	430828
O	343m E	Gasometer	1866	428368
O	344m E	Gasometers	1866	381407
O	349m E	Unspecified Tank	1963 - 1976	424701
O	351m E	Gasometer	1881	429779
O	352m E	Gasometers	1881	381406
O	355m E	Gasometer	1899	413918
O	355m E	Tanks	1963 - 1976	411082
O	357m E	Unspecified Tank	1914	400220
O	357m E	Gasometer	1896	419224
O	357m E	Unspecified Tank	1934	426300
G	364m SE	Unspecified Tank	1971 - 1972	429632
T	366m SE	Gas Works	1971 - 1972	410022
T	370m SE	Gas Works	1998	420182
O	379m E	Gas Holder Station	1992	380880
O	381m E	Gasometer	1899	398043
O	383m E	Unspecified Tank	1934	415251
O	383m E	Gasometer	1914	415950



ID	Location	Land use	Dates present	Group ID
O	383m E	Gasometer	1896	418060
O	387m E	Unspecified Tank	1963 - 1976	426031
O	399m E	Tanks	1934	403410
O	399m E	Tanks	1914	406137
O	399m E	Tanks	1963 - 1976	407705
O	401m E	Unspecified Tank	1963	405548
O	401m E	Unspecified Tank	1976	414193
O	401m E	Unspecified Tank	1963	431203
O	406m E	Gasometer	1914	382751
O	406m E	Unspecified Tank	1934 - 1976	427439
O	411m E	Gasholder	1988 - 1992	405933
W	424m SE	Unspecified Tank	1986	416641
W	424m SE	Unspecified Tank	1972	429547
W	427m SE	Unspecified Tank	1971	402580
W	427m SE	Unspecified Tank	1995	406887
O	435m E	Unspecified Tank	1963 - 1976	412256
O	442m E	Unspecified Tank	1934	412995
O	443m E	Unspecified Tank	1934	388109
O	445m E	Unspecified Tank	1988 - 1992	415293
O	462m E	Unspecified Tank	1963 - 1976	418341
O	467m E	Unspecified Tank	1934	428296
AA	468m NE	Unspecified Tank	1934	395989
O	470m E	Gasholder	1988 - 1992	406114
O	470m E	Unspecified Tank	1963 - 1976	404328
AA	479m NE	Unspecified Tank	1934	395988
U	497m SE	Tanks	1986	419254
U	497m SE	Tanks	1995	402850
U	498m SE	Tanks	1972	426103



ID	Location	Land use	Dates present	Group ID
U	498m SE	Tanks	1971	405331

*This data is sourced from Ordnance Survey / Groundsure.*

### 1.3 Historical energy features

<b>Records within 500m</b>	<b>76</b>
----------------------------	-----------

Energy features digitised from historical Ordnance Survey mapping at high-detail 1:1,250 and 1:2,500 scale, intelligently grouped into contiguous features. To prevent misrepresentation of the size of historical features at any given time, features are only grouped if they have similar geometries within immediately preceding or succeeding map editions. See section 2 for a breakdown of grouping if required. Grouped and the original ungrouped features can be cross-referenced across sections 1 and 2 using the 'Group ID'.

Features are displayed on the Past land use map on [page 15 >](#)

ID	Location	Land use	Dates present	Group ID
<b>A</b>	<b>On site</b>	<b>Electricity Substation</b>	<b>1989 - 1995</b>	<b>301298</b>
<b>A</b>	<b>On site</b>	<b>Electricity Substation</b>	<b>1979</b>	<b>318428</b>
B	23m W	Electricity Substation	1989 - 1995	303016
B	24m W	Electricity Substation	1979	283348
D	88m E	Electricity Substation	1989 - 1995	294749
E	88m SE	Electricity Substation	1989	322037
E	89m SE	Electricity Substation	1979	301066
D	94m NE	Electricity Substation	1968 - 1986	321756
F	100m N	Electricity Substation	1989 - 1995	317469
F	102m N	Electricity Substation	1979	318058
H	113m NE	Electricity Substation	1995	307987
H	114m NE	Electricity Substation	1989	284832
H	114m NE	Electricity Substation	1979	302008
H	121m NE	Electricity Substation	1995	269352
J	135m SE	Electricity Substation	1989	302935
J	136m SE	Electricity Substation	1968 - 1986	279573
J	136m SE	Electricity Substation	1995	312107



ID	Location	Land use	Dates present	Group ID
6	144m NE	Electricity Substation	1968 - 1995	305008
H	157m NE	Electricity Substation	1989 - 1995	309618
H	158m NE	Electricity Substation	1979	286509
I	194m N	Electricity Substation	1979	267909
L	227m N	Electricity Substation	1989 - 1995	315666
L	228m N	Electricity Substation	1979	279233
M	287m E	Electricity Substation	1989 - 1995	315182
M	288m E	Electricity Substation	1986	288797
M	288m E	Electricity Substation	1968 - 1979	310591
G	298m SE	Electricity Substation	1986 - 1995	284182
G	299m SE	Electricity Substation	1971	321077
G	302m SE	Electricity Substation	1972	267408
O	315m E	Gas Works	1896	292285
O	315m E	Gas Works	1881 - 1899	286903
O	317m E	Gas Works	1914	303024
O	318m E	Gas Works	1866	316882
9	323m NW	Electricity Substation	1986 - 1994	295272
O	324m E	Gasholder Station	1989	322599
O	328m E	Gasholder Station	1979	314973
O	328m E	Gas Works	1968	316186
O	334m E	Gasholder Station	1988	266192
O	334m E	Gasometer	1968	275810
O	340m E	Gasometer	1896 - 1899	299698
O	343m E	Gasometer	1866	302551
O	344m E	Gasometers	1866	275459
10	351m E	Electricity Works	1968	306460
Q	351m E	Electricity Works	1914 - 1986	308608
O	351m E	Gasometer	1881	313867





ID	Location	Land use	Dates present	Group ID
O	352m E	Gasometers	1881	275544
O	355m E	Gasometer	1899	297977
O	357m E	Gasometer	1896	316669
S	359m SE	Electricity Substation	1972	266639
S	360m SE	Electricity Substation	1986	285027
S	361m SE	Electricity Substation	1971	306693
S	362m SE	Electricity Substation	1995	316050
O	365m E	Electricity Substation	1992	273479
T	366m SE	Gas Works	1971 - 1972	301871
T	370m SE	Gas Works	1998	321883
O	379m E	Gas Holder Station	1992	266242
O	381m E	Gasometer	1899	305711
O	383m E	Gasometer	1896	280532
O	383m E	Gasometer	1914	309740
U	394m SE	Electricity Substation	1986	313500
U	395m SE	Electricity Substation	1972	314860
U	395m SE	Electricity Substation	1995	292500
U	398m SE	Electricity Substation	1971	290902
O	406m E	Gasometer	1914	275951
O	411m E	Gasholder	1988 - 1992	320432
Q	426m NE	Electricity Substation	1989	314049
Q	427m NE	Electricity Substation	1995	289520
Q	428m NE	Electricity Substation	1979	291049
Q	428m NE	Electricity Substation	1986 - 1995	312768
Q	441m NE	Electricity Substation	1995	298192
12	463m SE	Electricity Substation	1998	266490
O	470m E	Gasholder	1988 - 1992	321935
U	473m SE	Electricity Substation	1986	271592



ID	Location	Land use	Dates present	Group ID
U	483m SE	Electricity Substation	1995	290033
U	484m SE	Electricity Substation	1971 - 1972	314394
14	492m NW	Electricity Substation	1986 - 1994	311866

*This data is sourced from Ordnance Survey / Groundsure.*

## 1.4 Historical petrol stations

<b>Records within 500m</b>	<b>0</b>
----------------------------	----------

Petrol stations digitised from historical Ordnance Survey mapping at high-detail 1:1,250 and 1:2,500 scale, intelligently grouped into contiguous features. To prevent misrepresentation of the size of historical features at any given time, features are only grouped if they have similar geometries within immediately preceding or succeeding map editions. See section 2 for a breakdown of grouping if required. Grouped and the original ungrouped features can be cross-referenced across sections 1 and 2 using the 'Group ID'.

*This data is sourced from Ordnance Survey / Groundsure.*

## 1.5 Historical garages

<b>Records within 500m</b>	<b>9</b>
----------------------------	----------

Garages digitised from historical Ordnance Survey mapping at high-detail 1:1,250 and 1:2,500 scale, intelligently grouped into contiguous features. To prevent misrepresentation of the size of historical features at any given time, features are only grouped if they have similar geometries within immediately preceding or succeeding map editions. See section 2 for a breakdown of grouping if required. Grouped and the original ungrouped features can be cross-referenced across sections 1 and 2 using the 'Group ID'.

Features are displayed on the Past land use map on [page 15 >](#)

ID	Location	Land use	Dates present	Group ID
L	214m NE	Garage	1995	87348
L	215m NE	Garage	1989	83405
L	215m NE	Garage	1979	86755
L	218m NE	Garage	1968	87955
L	222m NE	Garage	1963	95625
L	236m NE	Garage	1986	95595
W	400m SE	Vehicle Repair Works	1986	85295
W	400m SE	Vehicle Repair Works	1972	85541



ID	Location	Land use	Dates present	Group ID
W	401m SE	Vehicle Repair Works	1971	92430

*This data is sourced from Ordnance Survey / Groundsure.*

## 1.6 Historical military land

Records within 500m

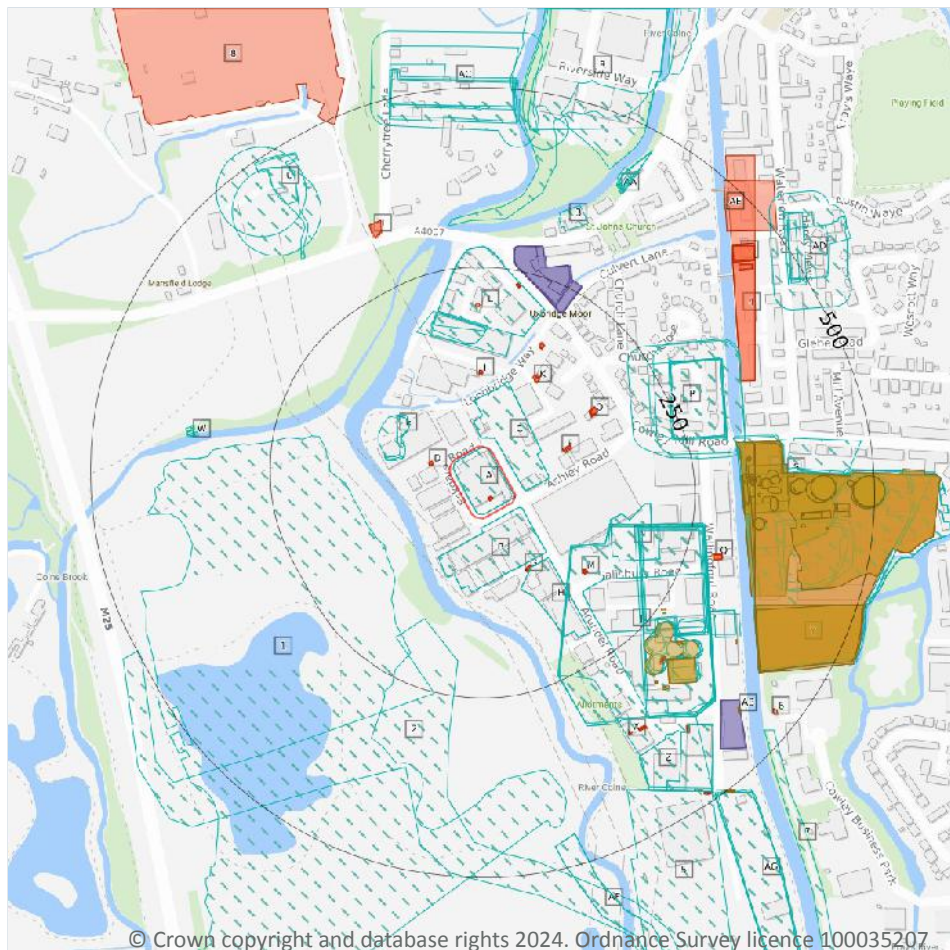
0

Areas of military land digitised from multiple sources including the National Archives, local records, MOD records and verified other sources, intelligently grouped into contiguous features.

*This data is sourced from Ordnance Survey / Groundsure / other sources.*



## 2 Past land use - un-grouped



- Site Outline
- Search buffers in metres (m)
- Historical industrial land uses
- Historical tanks
- Historical energy features
- Historical garages

### 2.1 Historical industrial land uses

Records within 500m

165

Potentially contaminative land use features digitised from historical Ordnance Survey mapping at 1:10,000 and 10,560 scale. Any records shown are available intelligently grouped in section 1. Grouped and the original un-grouped features can be cross-referenced across sections 1 and 2 using the 'Group ID'.

Features are displayed on the Past land use - un-grouped map on [page 29](#) >

ID	Location	Land Use	Date	Group ID
A	On site	Unspecified Works	1988	2208172
A	On site	Unspecified Works	1974	2208172
B	10m S	Unspecified Depot	1988	2211551





ID	Location	Land Use	Date	Group ID
B	10m S	Unspecified Depot	1974	2211551
C	13m NE	Unspecified Works	1988	2249530
C	13m NE	Unspecified Works	1974	2249530
E	65m W	Refuse Heap	1935	2255972
E	65m W	Refuse Heap	1935	2255972
E	66m W	Sand Pit	1938	2174138
H	91m SE	Unspecified Works	1988	2215398
H	91m SE	Unspecified Works	1974	2215398
J	101m SE	Sewage Works	1938	2234092
J	103m SE	Sewage Works	1938	2273229
J	104m SE	Sewage Works	1935	2205966
J	104m SE	Sewage Works	1935	2205966
1	127m SW	Gravel Pit	1974	2194080
L	130m N	Unspecified Works	1988	2237037
N	137m E	Unspecified Works	1988	2210301
N	137m E	Unspecified Works	1974	2210301
L	143m N	Old Gravel Pit	1920	2317818
L	143m N	Old Gravel Pit	1920	2331991
J	158m SE	Unspecified Works	1988	2240907
J	158m SE	Unspecified Works	1974	2240907
2	158m SW	Railway Sidings	1960	2267700
L	161m N	Old Gravel Pit	1932	2325753
L	163m N	Unspecified Works	1974	2237037
J	172m E	Unspecified Tanks	1920	2315550
J	176m E	Sewage Works	1932	2238984
J	176m E	Sewage Works	1920	2235988
J	178m E	Filter Beds	1920	2317634
J	181m E	Filter Beds	1920	2226843



ID	Location	Land Use	Date	Group ID
J	182m E	Filter Beds	1932	2300213
P	183m E	Nursery	1900	2210767
P	209m E	Nursery	1935	2238753
P	212m E	Nursery	1932	2299797
P	233m E	Nursery	1938	2214674
P	233m E	Nursery	1920	2290730
P	234m E	Nursery	1938	2214674
P	234m E	Nursery	1920	2290730
J	266m SE	Sewage Tanks	1938	2316940
J	266m SE	Sewage Tanks	1920	2278438
J	266m SE	Unspecified Tanks	1938	2222764
J	266m SE	Unspecified Tanks	1920	2212591
J	268m SE	Unspecified Tanks	1935	2222764
J	268m SE	Unspecified Tank	1932	2190901
J	268m SE	Unspecified Tank	1932	2190902
J	285m SE	Unspecified Tanks	1938	2273652
J	289m SE	Unspecified Tank	1932	2190903
J	293m SE	Unspecified Tank	1932	2190904
J	309m SE	Sewage Tanks	1920	2216287
J	310m SE	Filter Beds	1932	2258356
J	310m SE	Filter Beds	1920	2251535
R	310m N	Unspecified Works	1960	2214225
J	312m SE	Unspecified Tank	1932	2190905
J	312m SE	Sewage Works	1895	2252712
S	313m E	Gas Works	1895	2239945
J	313m SE	Sewage Works	1895	2252712
S	315m E	Gas Works	1895	2290570
S	318m E	Gas Works	1900	2290570



ID	Location	Land Use	Date	Group ID
S	319m E	Gas Works	1920	2329860
S	320m E	Gas Works	1868	2252287
S	320m E	Unspecified Commercial/Industrial	1938	2303880
3	321m N	Smithy	1895	2181059
S	321m E	Gas Works	1920	2261203
J	321m SE	Sewage Works	1900	2292297
S	322m E	Unspecified Commercial/Industrial	1938	2247706
S	322m E	Unspecified Commercial/Industrial	1935	2247706
S	323m E	Unspecified Commercial/Industrial	1932	2257346
S	326m E	Gas Works	1881	2263741
S	335m E	Gas Holder Station	1990	2188876
S	335m E	Gas Works	1975	2297372
S	335m E	Unspecified Works	1970	2263635
S	335m E	Unspecified Works	1960	2263635
S	337m E	Gasometer	1895	2239984
S	337m E	Unspecified Tank	1975	2215152
S	337m E	Unspecified Tank	1970	2221702
S	337m E	Unspecified Tank	1975	2221702
S	339m E	Unspecified Tanks	1895	2168575
S	340m E	Unspecified Tank	1970	2215152
S	343m E	Gasometer	1868	2241970
S	344m E	Unspecified Tanks	1868	2168574
S	345m E	Gasometer	1900	2263220
U	351m NW	Unspecified Pits	1938	2198499
S	351m E	Gasometer	1881	2246439
S	352m E	Gasometers	1881	2170778
S	353m E	Unspecified Tank	1895	2244531
W	353m W	Boat House	1900	2331419



ID	Location	Land Use	Date	Group ID
S	358m E	Unspecified Tank	1975	2209539
W	358m W	Boat House	1920	2206381
S	358m E	Unspecified Tank	1970	2209539
S	360m E	Unspecified Tank	1938	2285247
S	360m E	Unspecified Tank	1920	2223108
W	360m W	Boat House	1895	2288072
W	360m W	Boat House	1895	2218648
W	360m W	Boat House	1920	2331419
S	362m E	Unspecified Tank	1932	2231470
S	362m E	Unspecified Tank	1938	2252764
S	362m E	Unspecified Tank	1920	2241544
S	363m E	Unspecified Tank	1935	2252764
U	364m NW	Sandstone Pits	1932	2322166
S	365m E	Railway Sidings	1938	2247851
S	373m E	Unspecified Commercial/Industrial	1895	2253854
S	373m E	Railway Sidings	1938	2218195
S	376m E	Railway Sidings	1935	2218195
S	380m E	Gasometer	1895	2282531
S	381m E	Gas Works	1900	2256594
S	382m E	Unspecified Tank	1895	2229763
S	382m E	Unspecified Tanks	1960	2307300
S	385m E	Gasometer	1920	2299006
S	385m E	Unspecified Tank	1938	2268711
S	386m E	Unspecified Tanks	1935	2218898
Z	387m SE	Unspecified Depot	1988	2243958
Z	387m SE	Unspecified Depot	1974	2243958
S	388m E	Gasometer	1900	2269949
S	388m E	Unspecified Tank	1938	2268711





ID	Location	Land Use	Date	Group ID
S	388m E	Gasometer	1920	2299006
S	389m E	Unspecified Tank	1932	2288543
S	391m E	Unspecified Tank	1970	2242960
Z	395m SE	Unspecified Works	1988	2300319
Z	395m SE	Unspecified Works	1974	2300319
U	398m NW	Sandstone Pits	1938	2326280
AA	400m NE	Smithy	1900	2203905
AA	403m NE	Smithy	1920	2327320
AA	403m NE	Smithy	1920	2319169
AA	407m NE	Smithy	1932	2235132
S	407m E	Gasometer	1920	2328433
S	407m E	Unspecified Tank	1938	2270571
S	410m E	Unspecified Tank	1932	2238655
S	410m E	Unspecified Tank	1938	2270571
S	410m E	Gasometer	1920	2328433
AA	415m NE	Smithy	1895	2218376
S	415m E	Gasometer	1990	2247854
S	415m E	Gasometer	1975	2247854
S	415m E	Unspecified Tank	1970	2297152
S	415m E	Unspecified Tanks	1960	2243676
AC	420m N	Nursery	1932	2297254
U	422m NW	Sandstone Pits	1935	2285326
R	423m N	Unspecified Works	1974	2222119
S	427m SE	Unspecified Works	1974	2239006
R	445m N	Unspecified Works	1935	2207580
R	446m N	Unspecified Works	1938	2317128
AD	448m NE	Nursery	1932	2320511
AC	452m N	Nursery	1974	2304908



ID	Location	Land Use	Date	Group ID
AC	455m N	Nursery	1938	2314674
AF	457m S	Railway Sidings	1988	2274219
AF	457m S	Railway Sidings	1974	2236901
S	468m E	Unspecified Tank	1938	2237555
AC	469m N	Nursery	1935	2301131
S	470m E	Unspecified Tank	1938	2308035
S	471m E	Gasometer	1990	2249824
S	471m E	Gasometer	1975	2249824
S	471m E	Unspecified Tank	1970	2203194
S	472m E	Unspecified Tanks	1960	2168576
AC	472m N	Nursery	1960	2307539
7	473m SE	Unspecified Ground Workings	1970	2163724
S	474m E	Unspecified Tank	1935	2237555
AD	474m NE	Railway Sidings	1960	2273831
AC	474m N	Nursery	1938	2277664
AD	478m NE	Railway Sidings	1935	2288452
AD	480m NE	Nursery	1920	2225252
AD	481m NE	Nursery	1920	2225252
AG	491m SE	Refuse Heap	1938	2217002
AG	493m SE	Refuse Heap	1935	2214645
AG	493m SE	Refuse Heap	1935	2214645
AG	495m SE	Refuse Heap	1938	2234723

*This data is sourced from Ordnance Survey / Groundsure.*

## 2.2 Historical tanks

**Records within 500m**

**118**

Tank features digitised from historical Ordnance Survey mapping at high-detail 1:1,250 and 1:2,500 scale. Any records shown are available intelligently grouped in section 1. Grouped and the original un-grouped features can be cross-referenced across sections 1 and 2 using the 'Group ID'.



Features are displayed on the Past land use - un-grouped map on [page 29 >](#)

ID	Location	Land Use	Date	Group ID
J	254m SE	Unspecified Tank	1986	388102
J	260m SE	Unspecified Tank	1972	427118
J	260m SE	Unspecified Tank	1971	420258
J	264m SE	Tanks	1914	421816
J	300m SE	Unspecified Tank	1934	388104
J	307m SE	Tanks	1914	408119
J	308m SE	Tanks	1934	408287
S	315m E	Gas Works	1896	425958
S	315m E	Gas Works	1899	413136
S	317m E	Gas Works	1914	411775
S	317m E	Tanks	1899	410784
S	318m E	Gas Works	1866	418835
J	318m SE	Unspecified Tank	1986	423375
J	318m SE	Unspecified Tank	1995	423375
J	319m SE	Unspecified Tank	1971	423375
J	319m SE	Unspecified Tank	1972	423375
S	319m E	Unspecified Tank	1896	388106
S	319m E	Unspecified Tank	1934	388108
S	320m E	Tanks	1934	424493
S	320m E	Tanks	1914	415670
S	323m E	Tanks	1896	410129
S	324m E	Gasholder Station	1989	426881
S	326m E	Gas Works	1881	399556
S	327m E	Unspecified Tank	1986	431161
S	327m E	Unspecified Tank	1963	418160
S	327m E	Unspecified Tank	1968	418160
S	328m E	Gasholder Station	1979	408438



ID	Location	Land Use	Date	Group ID
S	328m E	Gas Works	1968	418444
S	328m E	Tanks	1986	422793
S	328m E	Unspecified Tank	1963	417571
S	328m E	Unspecified Tank	1968	417571
S	328m E	Tanks	1963	410747
S	328m E	Tanks	1968	410747
S	329m E	Unspecified Tank	1963	418571
S	329m E	Unspecified Tank	1968	418571
J	331m SE	Unspecified Tank	1914	417637
J	331m SE	Unspecified Tank	1934	431511
J	333m SE	Unspecified Tank	1963	423967
S	334m E	Gasholder Station	1988	376597
S	334m E	Unspecified Tank	1963	419527
S	334m E	Gasometer	1968	382752
S	335m E	Unspecified Tank	1976	404310
S	335m E	Unspecified Tank	1963	421740
S	335m E	Unspecified Tank	1963	421740
S	336m E	Tanks	1976	412350
S	336m E	Tanks	1963	412350
S	336m E	Tanks	1963	412350
S	337m E	Unspecified Tank	1934	388107
S	340m E	Gasometer	1899	430828
S	343m E	Gasometer	1866	428368
S	343m E	Gasometer	1896	430828
S	344m E	Gasometers	1866	381407
S	349m E	Unspecified Tank	1976	424701
S	349m E	Unspecified Tank	1963	424701
S	349m E	Unspecified Tank	1963	424701





ID	Location	Land Use	Date	Group ID
S	351m E	Gasometer	1881	429779
S	352m E	Gasometers	1881	381406
S	355m E	Gasometer	1899	413918
S	355m E	Tanks	1976	411082
S	355m E	Tanks	1963	411082
S	355m E	Tanks	1963	411082
S	357m E	Gasometer	1896	419224
S	357m E	Unspecified Tank	1934	426300
S	357m E	Unspecified Tank	1914	400220
J	364m SE	Unspecified Tank	1971	429632
J	364m SE	Unspecified Tank	1972	429632
Y	366m SE	Gas Works	1971	410022
Y	367m SE	Gas Works	1972	410022
Y	370m SE	Gas Works	1998	420182
S	379m E	Gas Holder Station	1992	380880
S	381m E	Gasometer	1899	398043
S	383m E	Gasometer	1896	418060
S	383m E	Unspecified Tank	1934	415251
S	383m E	Gasometer	1914	415950
S	387m E	Unspecified Tank	1976	426031
S	387m E	Unspecified Tank	1963	426031
S	387m E	Unspecified Tank	1963	426031
S	399m E	Tanks	1934	403410
S	399m E	Tanks	1914	406137
S	399m E	Tanks	1976	407705
S	399m E	Tanks	1963	407705
S	399m E	Tanks	1963	407705
S	401m E	Unspecified Tank	1976	414193



ID	Location	Land Use	Date	Group ID
S	401m E	Unspecified Tank	1963	405548
S	401m E	Unspecified Tank	1963	431203
S	406m E	Unspecified Tank	1934	427439
S	406m E	Gasometer	1914	382751
S	411m E	Gasholder	1988	405933
S	411m E	Unspecified Tank	1976	427439
S	411m E	Unspecified Tank	1963	427439
S	411m E	Unspecified Tank	1963	427439
S	412m E	Gasholder	1992	405933
AB	424m SE	Unspecified Tank	1986	416641
AB	424m SE	Unspecified Tank	1972	429547
AB	427m SE	Unspecified Tank	1971	402580
AB	427m SE	Unspecified Tank	1995	406887
S	435m E	Unspecified Tank	1976	412256
S	435m E	Unspecified Tank	1963	412256
S	435m E	Unspecified Tank	1963	412256
S	442m E	Unspecified Tank	1934	412995
S	443m E	Unspecified Tank	1934	388109
S	445m E	Unspecified Tank	1988	415293
S	446m E	Unspecified Tank	1992	415293
S	462m E	Unspecified Tank	1976	418341
S	462m E	Unspecified Tank	1963	418341
S	462m E	Unspecified Tank	1963	418341
S	467m E	Unspecified Tank	1934	428296
AE	468m NE	Unspecified Tank	1934	395989
S	470m E	Gasholder	1988	406114
S	470m E	Unspecified Tank	1976	404328
S	470m E	Unspecified Tank	1963	404328



ID	Location	Land Use	Date	Group ID
S	470m E	Unspecified Tank	1963	404328
S	471m E	Gasholder	1992	406114
AE	479m NE	Unspecified Tank	1934	395988
Z	497m SE	Tanks	1986	419254
Z	497m SE	Tanks	1995	402850
Z	498m SE	Tanks	1972	426103
Z	498m SE	Tanks	1971	405331

*This data is sourced from Ordnance Survey / Groundsure.*

## 2.3 Historical energy features

<b>Records within 500m</b>	<b>115</b>
----------------------------	------------

Energy features digitised from historical Ordnance Survey mapping at high-detail 1:1,250 and 1:2,500 scale. Any records shown are available intelligently grouped in section 1. Grouped and the original un-grouped features can be cross-referenced across sections 1 and 2 using the 'Group ID'.

Features are displayed on the Past land use - un-grouped map on [page 29 >](#)

ID	Location	Land Use	Date	Group ID
A	On site	Electricity Substation	1979	318428
A	On site	Electricity Substation	1995	301298
A	On site	Electricity Substation	1989	301298
A	On site	Electricity Substation	1995	301298
D	23m W	Electricity Substation	1995	303016
D	23m W	Electricity Substation	1995	303016
D	24m W	Electricity Substation	1979	283348
D	24m W	Electricity Substation	1989	303016
F	88m E	Electricity Substation	1989	294749
F	88m E	Electricity Substation	1995	294749
F	88m E	Electricity Substation	1995	294749
G	88m SE	Electricity Substation	1989	322037
G	89m SE	Electricity Substation	1979	301066



ID	Location	Land Use	Date	Group ID
F	94m NE	Electricity Substation	1979	321756
F	95m E	Electricity Substation	1968	321756
F	96m E	Electricity Substation	1986	321756
I	100m N	Electricity Substation	1995	317469
I	100m N	Electricity Substation	1995	317469
I	102m N	Electricity Substation	1979	318058
I	102m N	Electricity Substation	1989	317469
K	113m NE	Electricity Substation	1995	307987
K	114m NE	Electricity Substation	1989	284832
K	114m NE	Electricity Substation	1979	302008
K	121m NE	Electricity Substation	1995	269352
M	135m SE	Electricity Substation	1989	302935
M	136m SE	Electricity Substation	1979	279573
M	136m SE	Electricity Substation	1968	279573
M	136m SE	Electricity Substation	1995	312107
M	136m SE	Electricity Substation	1995	312107
M	137m SE	Electricity Substation	1986	279573
O	144m NE	Electricity Substation	1995	305008
O	144m NE	Electricity Substation	1995	305008
O	145m NE	Electricity Substation	1989	305008
O	146m NE	Electricity Substation	1968	305008
O	146m NE	Electricity Substation	1979	305008
O	147m NE	Electricity Substation	1986	305008
K	157m NE	Electricity Substation	1995	309618
K	157m NE	Electricity Substation	1995	309618
K	158m NE	Electricity Substation	1979	286509
K	158m NE	Electricity Substation	1989	309618
L	194m N	Electricity Substation	1979	267909





ID	Location	Land Use	Date	Group ID
L	227m N	Electricity Substation	1995	315666
L	227m N	Electricity Substation	1995	315666
L	228m N	Electricity Substation	1979	279233
L	228m N	Electricity Substation	1989	315666
Q	287m E	Electricity Substation	1989	315182
Q	288m E	Electricity Substation	1986	288797
Q	288m E	Electricity Substation	1968	310591
Q	288m E	Electricity Substation	1979	310591
Q	288m E	Electricity Substation	1995	315182
Q	288m E	Electricity Substation	1995	315182
J	298m SE	Electricity Substation	1986	284182
J	299m SE	Electricity Substation	1995	284182
J	299m SE	Electricity Substation	1971	321077
J	302m SE	Electricity Substation	1972	267408
S	315m E	Gas Works	1896	292285
S	315m E	Gas Works	1899	286903
S	317m E	Gas Works	1914	303024
S	318m E	Gas Works	1866	316882
T	323m NW	Electricity Substation	1986	295272
S	324m E	Gasholder Station	1989	322599
T	324m NW	Electricity Substation	1994	295272
S	326m E	Gas Works	1881	286903
S	328m E	Gasholder Station	1979	314973
S	328m E	Gas Works	1968	316186
S	334m E	Gasholder Station	1988	266192
S	334m E	Gasometer	1968	275810
S	340m E	Gasometer	1899	299698
S	343m E	Gasometer	1866	302551



ID	Location	Land Use	Date	Group ID
S	343m E	Gasometer	1896	299698
S	344m E	Gasometers	1866	275459
4	351m E	Electricity Works	1968	306460
V	351m E	Electricity Works	1986	308608
S	351m E	Gasometer	1881	313867
S	352m E	Gasometers	1881	275544
S	355m E	Gasometer	1899	297977
S	357m E	Gasometer	1896	316669
X	359m SE	Electricity Substation	1972	266639
X	360m SE	Electricity Substation	1986	285027
X	361m SE	Electricity Substation	1971	306693
X	362m SE	Electricity Substation	1995	316050
S	365m E	Electricity Substation	1992	273479
Y	366m SE	Gas Works	1971	301871
Y	367m SE	Gas Works	1972	301871
Y	370m SE	Gas Works	1998	321883
S	379m E	Gas Holder Station	1992	266242
S	381m E	Gasometer	1899	305711
S	383m E	Gasometer	1896	280532
S	383m E	Gasometer	1914	309740
Z	394m SE	Electricity Substation	1986	313500
Z	395m SE	Electricity Substation	1972	314860
Z	395m SE	Electricity Substation	1995	292500
Z	398m SE	Electricity Substation	1971	290902
S	406m E	Gasometer	1914	275951
S	411m E	Gasholder	1988	320432
S	412m E	Gasholder	1992	320432
V	426m NE	Electricity Substation	1989	314049



ID	Location	Land Use	Date	Group ID
V	427m NE	Electricity Substation	1995	289520
V	427m NE	Electricity Substation	1995	289520
V	428m NE	Electricity Substation	1979	291049
V	428m NE	Electricity Substation	1995	312768
V	428m NE	Electricity Substation	1995	312768
V	429m NE	Electricity Substation	1989	312768
V	441m NE	Electricity Substation	1986	312768
V	441m NE	Electricity Substation	1995	298192
V	441m NE	Electricity Substation	1995	298192
AE	449m NE	Electricity Works	1914	308608
6	463m SE	Electricity Substation	1998	266490
S	470m E	Gasholder	1988	321935
S	471m E	Gasholder	1992	321935
Z	473m SE	Electricity Substation	1986	271592
Z	483m SE	Electricity Substation	1995	290033
Z	484m SE	Electricity Substation	1972	314394
Z	484m SE	Electricity Substation	1971	314394
8	492m NW	Electricity Substation	1994	311866

*This data is sourced from Ordnance Survey / Groundsure.*

## 2.4 Historical petrol stations

**Records within 500m**

**0**

Petrol stations digitised from historical Ordnance Survey mapping at high-detail 1:1,250 and 1:2,500 scale. Any records shown are available intelligently grouped in section 1. Grouped and the original un-grouped features can be cross-referenced across sections 1 and 2 using the 'Group ID'.

*This data is sourced from Ordnance Survey / Groundsure.*



## 2.5 Historical garages

### Records within 500m

**10**

Garages digitised from historical Ordnance Survey mapping at high-detail 1:1,250 and 1:2,500 scale. Any records shown are available intelligently grouped in section 1. Grouped and the original un-grouped features can be cross-referenced across sections 1 and 2 using the 'Group ID'.

Features are displayed on the Past land use - un-grouped map on [page 29 >](#)

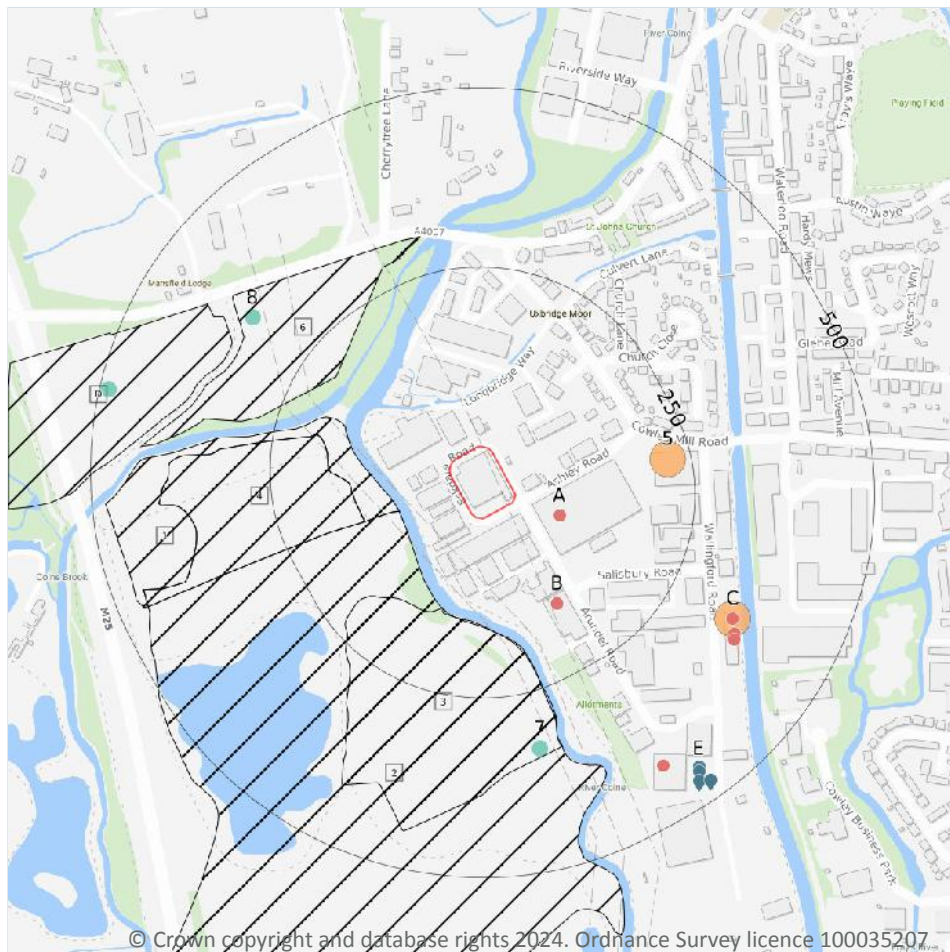
ID	Location	Land Use	Date	Group ID
L	214m NE	Garage	1995	87348
L	214m NE	Garage	1995	87348
L	215m NE	Garage	1989	83405
L	215m NE	Garage	1979	86755
L	218m NE	Garage	1968	87955
L	222m NE	Garage	1963	95625
L	236m NE	Garage	1986	95595
AB	400m SE	Vehicle Repair Works	1986	85295
AB	400m SE	Vehicle Repair Works	1972	85541
AB	401m SE	Vehicle Repair Works	1971	92430

*This data is sourced from Ordnance Survey / Groundsure.*





## 3 Waste and landfill



- Site Outline
- Search buffers in metres (m)
- Historical landfill (EA/NRW)
- Historical landfill (BGS)
- Historical waste sites
- ◆ Licensed waste sites
- Waste exemptions

### 3.1 Active or recent landfill

Records within 500m

0

Active or recently closed landfill sites under Environment Agency/Natural Resources Wales regulation.

*This data is sourced from the Environment Agency and Natural Resources Wales.*

### 3.2 Historical landfill (BGS records)

Records within 500m

3

Landfill sites identified on a survey carried out on behalf of the DoE in 1973. These sites may have been closed or operational at this time.

Features are displayed on the Waste and landfill map on [page 46 >](#)

ID	Location	Address	BGS Number	Risk	Waste Type
7	330m S	Cape Products, Iver Lane, Uxbridge , Middx	1582	Risk to minor aquifer	N/A
8	344m NW	Willment Bros, Woodlands Pk, Slough Rd, Denham	1581	Risk to minor aquifer	N/A
D	487m W	Willment Bros, Woodlands Park, Slough Rd, Denham	1580	Risk to minor aquifer	N/A

*This data is sourced from the British Geological Survey.*

### 3.3 Historical landfill (LA/mapping records)

**Records within 500m**

**0**

Landfill sites identified from Local Authority records and high detail historical mapping.

*This data is sourced from the Ordnance Survey/Groundsure and Local Authority records.*

### 3.4 Historical landfill (EA/NRW records)

**Records within 500m**

**6**

Known historical (closed) landfill sites (e.g. sites where there is no PPC permit or waste management licence currently in force). This includes sites that existed before the waste licensing regime and sites that have been licensed in the past but where a licence has been revoked, ceased to exist or surrendered and a certificate of completion has been issued.

Features are displayed on the Waste and landfill map on [page 46 >](#)

ID	Location	Details		
1	86m W	Site Address: Elk Meadow Estate, Slough Road, Iver Heath, Buckinghamshire Licence Holder Address: Moorwards Farm	Waste Licence: Yes Site Reference: WDA/266, 1092/2 Waste Type: Inert Environmental Permitting Regulations (Waste) Reference: - Licence Issue: 13/02/1989 Licence Surrender: 13/06/1989	Operator: - Licence Holder: P J Gray First Recorded 30/11/1988 Last Recorded: 30/11/1992
2	86m W	Site Address: Woodlands Park, Slough Road, Iver Heath, Buckinghamshire Licence Holder Address: Iver Lane, Uxbridge	Waste Licence: Yes Site Reference: WDA/108 (1092/1), WDA/134, 0400/0138 Waste Type: Inert, Industrial, Commercial, Household, Special Environmental Permitting Regulations (Waste) Reference: - Licence Issue: 09/03/1978 Licence Surrender: 20/05/1993	Operator: - Licence Holder: Cape Boards and Panels Limited First Recorded 31/12/1972 Last Recorded: 20/05/1993



ID	Location	Details		
3	134m S	Site Address: Cape Products, Iver Lane, Uxbridge, Middlesex Licence Holder Address: -	Waste Licence: - Site Reference: - Waste Type: - Environmental Permitting Regulations (Waste) Reference: - Licence Issue: - Licence Surrender: -	Operator: - Licence Holder: - First Recorded - Last Recorded: -
4	136m W	Site Address: Elk Meadows Estate, Slough Road, Iver Heath, Buckinghamshire Licence Holder Address: Moorwards Farm	Waste Licence: Yes Site Reference: WDA/275 Waste Type: Inert Environmental Permitting Regulations (Waste) Reference: - Licence Issue: 13/06/1989 Licence Surrender: 03/05/1994	Operator: - Licence Holder: P J Gray First Recorded 30/11/1988 Last Recorded: 30/06/1993
6	201m NW	Site Address: Slough Road B, Slough Road Licence Holder Address: -	Waste Licence: - Site Reference: - Waste Type: - Environmental Permitting Regulations (Waste) Reference: - Licence Issue: - Licence Surrender: -	Operator: - Licence Holder: - First Recorded - Last Recorded: -
D	347m NW	Site Address: Slough Road A, Slough Road Licence Holder Address: -	Waste Licence: - Site Reference: - Waste Type: - Environmental Permitting Regulations (Waste) Reference: - Licence Issue: - Licence Surrender: -	Operator: - Licence Holder: - First Recorded - Last Recorded: -

*This data is sourced from the Environment Agency and Natural Resources Wales.*

### 3.5 Historical waste sites

#### Records within 500m

2

Waste site records derived from Local Authority planning records and high detail historical mapping. Features are displayed on the Waste and landfill map on [page 46](#) >



ID	Location	Address	Further Details	Date
5	193m E	Site Address: Uxbridge Industrial Estate, Wallingford Road, UXBRIDGE, Hillingdon, UB8 2BB	Type of Site: Waste Transfer Station Planning application reference: 93/1398 Description: An application (ref: 93/1398) for Detailed Planning permission was submitted to Hillingdon L.B. on 19th August 1993. Data source: Historic Planning Application Data Type: Point	-
C	321m SE	Site Address: 1a, Wallingford Road, UXBRIDGE, Hillingdon, UB8 2FR	Type of Site: Waste Recycling Facilities (Conversion) Planning application reference: 46055/APP/2007/2631 Description: Scheme comprises change of use from open storage (class B8) to waste recycling (class B2). An application (ref: 46055/APP/2007/2631) for detailed planning permission was granted by Hillingdon L.B. Planning decision obtained Data source: Historic Planning Application Data Type: Point	-

*This data is sourced from Ordnance Survey/Groundsure and Local Authority records.*

### 3.6 Licensed waste sites

<b>Records within 500m</b>	<b>9</b>
----------------------------	----------

Active or recently closed waste sites under Environment Agency/Natural Resources Wales regulation.

Features are displayed on the Waste and landfill map on [page 46 >](#)

ID	Location	Details		
E	452m SE	Site Name: Wallingford Road Recycling Facility Site Address: Wallingford Road Recycling Facility, 1a, Wallingford Road, Uxbridge Ind Est, Uxbridge, Middlesex, UB8 2FR Correspondence Address: -	Type of Site: Material Recycling Treatment Facility Size: >= 25000 tonnes 75000 tonnes Environmental Permitting Regulations (Waste) Licence Number: MYA004 EPR reference: EA/EPR/JB3834RX/A001 Operator: Mya Recycling Ltd Waste Management licence No: 104532 Annual Tonnage: 74999	Issue Date: 16/10/2012 Effective Date: - Modified: - Surrendered Date: - Expiry Date: - Cancelled Date: - Status: Issued





ID	Location	Details		
E	452m SE	Site Name: Wallingford Road Recycling Facility Site Address: Wallingford Road Recycling Facility, 1a, Wallingford Road, Uxbridge Ind Est, Uxbridge, Middlesex, UB8 2FR Correspondence Address: -	Type of Site: Material Recycling Treatment Facility Size: >= 75000 tonnes Environmental Permitting Regulations (Waste) Licence Number: JMW005 EPR reference: EA/EPR/PB3330RA/T001 Operator: Johal Mya Waste Management Limited Waste Management licence No: 104532 Annual Tonnage: 74999	Issue Date: 16/10/2012 Effective Date: 25/04/2013 Modified: - Surrendered Date: - Expiry Date: - Cancelled Date: - Status: Transferred
E	458m SE	Site Name: Wallingford Road Recycling Facility Site Address: Wallingford Road Recycling Facility, 1a, Wallingford Road, Uxbridge Ind Est, Uxbridge, Middlesex, UB8 2FR Correspondence Address: -	Type of Site: Material Recycling Treatment Facility Size: >= 25000 tonnes 75000 tonnes Environmental Permitting Regulations (Waste) Licence Number: BAL172 EPR reference: EA/EPR/DB3604KH/T001 Operator: Bally Skips Limited Waste Management licence No: 104532 Annual Tonnage: 74999	Issue Date: 16/10/2012 Effective Date: 19/11/2015 Modified: - Surrendered Date: - Expiry Date: - Cancelled Date: - Status: Transferred
E	458m SE	Site Name: Wallingford Road Recycling Facility Site Address: Wallingford Road Recycling Facility, 1a, Wallingford Road, Uxbridge Ind Est, Uxbridge, Middlesex, UB8 2FR Correspondence Address: -	Type of Site: Material Recycling Treatment Facility Size: >= 75000 tonnes Environmental Permitting Regulations (Waste) Licence Number: BAL172 EPR reference: EA/EPR/DB3604KH/T001 Operator: Bally Skips Limited Waste Management licence No: 104532 Annual Tonnage: 74999	Issue Date: 16/10/2012 Effective Date: 19/11/2015 Modified: - Surrendered Date: - Expiry Date: - Cancelled Date: - Status: Transferred



ID	Location	Details		
E	458m SE	Site Name: Wallingford Road Recycling Facility Site Address: 1a Wallingford Road Recycling Facility, Wallingford Road, Uxbridge Ind Est, Uxbridge, Middlesex, UB8 2FR Correspondence Address: -	Type of Site: Material Recycling Treatment Facility Size: >= 25000 tonnes 75000 tonnes Environmental Permitting Regulations (Waste) Licence Number: 635522 EPR reference: EA/EPR/JB3708GJ Operator: Uxbridge Recycling Limited Waste Management licence No: 104532 Annual Tonnage: 74999	Issue Date: 16/10/2012 Effective Date: 16/10/2012 Modified: - Surrendered Date: - Expiry Date: - Cancelled Date: - Status: Issued
E	469m SE	Site Name: Wallingford Road, Uxbridge Site Address: A1 Uxbridge Waste Lrd, 1A, Wallingford Road, Uxbridge Ind.Est, Uxbridge, Middlesex, UB8 2FR Correspondence Address: -	Type of Site: Transfer Station taking Non-Biodegradable Wastes Size: >= 25000 tonnes 75000 tonnes Environmental Permitting Regulations (Waste) Licence Number: AAA001 EPR reference: EA/EPR/GP3497NG/T002 Operator: A & A Recycling Ltd Waste Management licence No: 80506 Annual Tonnage: 77988	Issue Date: 06/09/1999 Effective Date: 21/06/2007 Modified: - Surrendered Date: - Expiry Date: - Cancelled Date: - Status: Revoked
E	469m SE	Site Name: Wallingford Road, Uxbridge Site Address: 1a, Wallingford Road, Uxbridge Ind Est, Uxbridge, Middlesex, UB8 2FR Correspondence Address: -	Type of Site: Transfer Station taking Non-Biodegradable Wastes Size: >= 75000 tonnes Environmental Permitting Regulations (Waste) Licence Number: 653517 EPR reference: EA/EPR/GP3497NG Operator: A & A Recycling Limited Waste Management licence No: 80506 Annual Tonnage: 77988	Issue Date: 06/09/1999 Effective Date: 06/09/1999 Modified: - Surrendered Date: - Expiry Date: - Cancelled Date: - Status: Revoked
E	477m SE	Site Name: - Site Address: A1 Uxbridge Waste Lrd, 1A, Wallingford Road, Uxbridge Ind.Est, Uxbridge, Middx, UB8 2FR Correspondence Address: 1 A Wallingford Road, Uxbridge Ind Estate, Uxbridge, Middlesex, UB8 2FR	Type of Site: Transfer Station taking Non-Biodegradable Wastes Size: >= 75000 tonnes Environmental Permitting Regulations (Waste) Licence Number: UXB002 EPR reference: - Operator: A1 Uxbridge Environmental Services Ltd Waste Management licence No: 80506 Annual Tonnage: 77988	Issue Date: 06/09/1999 Effective Date: 26/10/2004 Modified: - Surrendered Date: - Expiry Date: - Cancelled Date: - Status: Transferred



ID	Location	Details		
E	477m SE	Site Name: A1 Uxbridge Waste Ltd Site Address: A1 Uxbridge Waste Lrd, 1A, Wallingford Road, Uxbridge Ind.Est, Uxbridge, Middx, UB8 2FR Correspondence Address: Smith Stuart Reynolds, Bignell Park Barns, Chesterton, Bicester, Oxon, OX6 8TD	Type of Site: Transfer Station taking Non-Biodegradable Wastes Size: >= 75000 tonnes Environmental Permitting Regulations (Waste) Licence Number: A1U001 EPR reference: - Operator: A1 Uxbridge Waste Ltd Waste Management licence No: 80506 Annual Tonnage: 77988	Issue Date: 06/09/1999 Effective Date: - Modified: - Surrendered Date: - Expiry Date: - Cancelled Date: - Status: Issued

*This data is sourced from the Environment Agency and Natural Resources Wales.*

### 3.7 Waste exemptions

<b>Records within 500m</b>	<b>17</b>
----------------------------	-----------

Activities involving the storage, treatment, use or disposal of waste that are exempt from needing a permit. Exemptions have specific limits and conditions that must be adhered to.

Features are displayed on the Waste and landfill map on [page 46 >](#)

ID	Location	Site	Reference	Category	Sub-Category	Description
A	67m SE	Trimfleet House Arundel Road Uxbridge Middlesex Ub8 2sd	EPR/EF0730DX /A001	Treating waste exemption	Non-agricultural waste only	Sorting mixed waste
A	67m SE	Trimfleet House Arundel Road Uxbridge Middlesex Ub8 2sd	EPR/EF0730DX /A001	Treating waste exemption	Non-agricultural waste only	Recovery of scrap metal
B	153m SE	Affinity Point, Arundel Road, Uxbridge, Ub8 2rr	WEX389857	Using waste exemption	Not on a farm	Use of waste in construction
B	153m SE	Affinity Point, Arundel Road, Uxbridge, Ub8 2rr	WEX389857	Storing waste exemption	Not on a farm	Storage of waste in a secure place
B	153m SE	Affinity Point, Arundel Road, Uxbridge, Ub8 2rr	WEX118420	Storing waste exemption	Not on a farm	Storage of waste in a secure place
B	153m SE	Affinity Point, Arundel Road, Uxbridge, Ub8 2rr	WEX118420	Using waste exemption	Not on a farm	Use of waste in construction
B	153m SE	-	WEX260780	Storing waste exemption	Not on a farm	Storage of waste in a secure place
B	153m SE	-	WEX260780	Using waste exemption	Not on a farm	Use of waste in construction

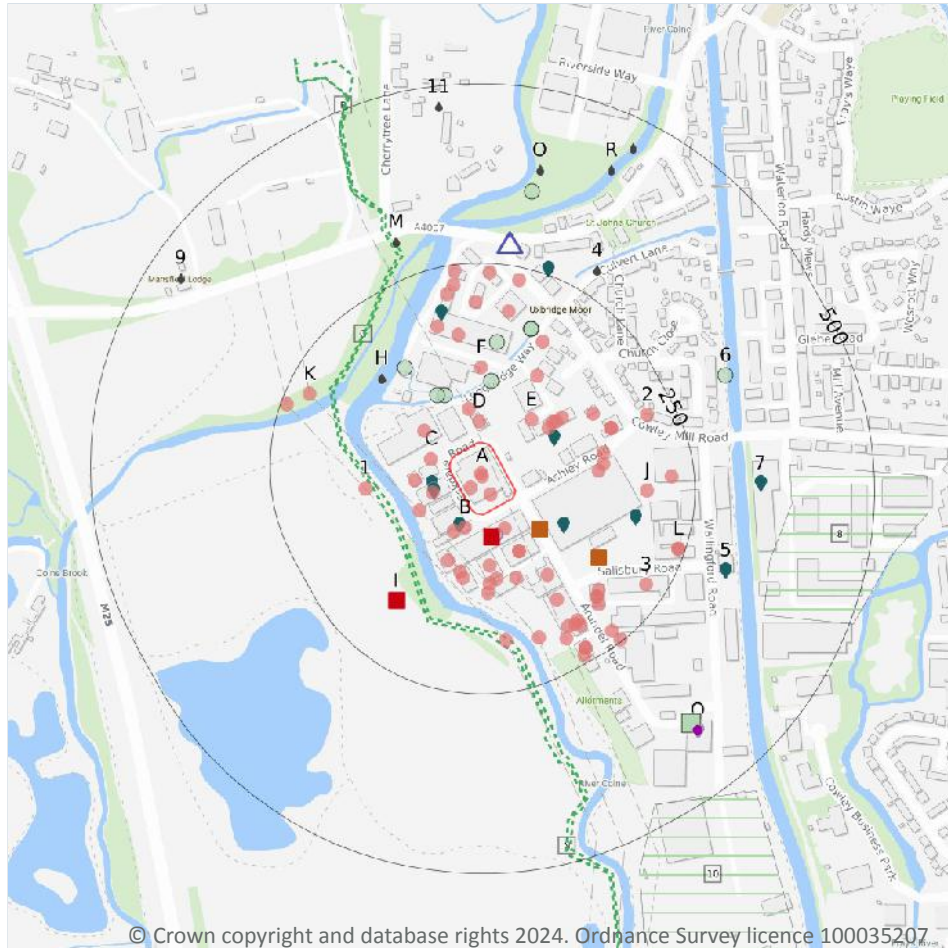


ID	Location	Site	Reference	Category	Sub-Category	Description
C	346m SE	Ds Smith, Wallingford Road, Uxbridge, Ub82fr	WEX259041	Treating waste exemption	Not on a farm	Preparatory treatments (baling, sorting, shredding etc)
C	346m SE	Ds Smith, Wallingford Road, Uxbridge, Ub82fr	WEX259041	Treating waste exemption	Not on a farm	Sorting mixed waste
C	359m SE	Ds Smith, Wallingford Road, Uxbridge, Ub82fr	WEX117929	Treating waste exemption	Not on a farm	Sorting mixed waste
C	359m SE	Ds Smith, Wallingford Road, Uxbridge, Ub82fr	WEX117929	Treating waste exemption	Not on a farm	Preparatory treatments (baling, sorting, shredding etc)
C	362m SE	Ds Smith Wallingford Road Middlesex Ub8 2fr	EPR/EE5246T M/A001	Treating waste exemption	Non-agricultural waste only	Preparatory treatments (baling, sorting, shredding etc)
C	362m SE	Ds Smith Wallingford Road Middlesex Ub8 2fr	EPR/EE5246T M/A001	Treating waste exemption	Non-agricultural waste only	Sorting mixed waste
E	423m SE	Arundel Road, Uxbridge, Ub8 2rp	WEX335290	Disposing of waste exemption	Not on a farm	Disposal by incineration
E	423m SE	Arundel Road, Uxbridge, Ub8 2rp	WEX211344	Disposing of waste exemption	Not on a farm	Disposal by incineration
E	423m SE	Arundel Road, Uxbridge, Ub8 2rp	WEX066752	Disposing of waste exemption	Not on a farm	Disposal by incineration

*This data is sourced from the Environment Agency and Natural Resources Wales.*



## 4 Current industrial land use



- Site Outline
- Search buffers in metres (m)
- Recent industrial land uses
- △ Current or recent petrol stations
- Electricity cables
- Control of Major Accident Hazards
- Historical licensed industrial activities
- Part A(1) industrial activities
- Licensed pollutant release (Part A(2)/B)
- Licensed Discharges to controlled waters
- Pollutant release to public sewer
- List 1 Dangerous Substances
- List 2 Dangerous Substances
- Pollution Incidents (EA/NRW)
- Pollution inventory waste transfers

### 4.1 Recent industrial land uses

Records within 250m

74

Current potentially contaminative industrial sites.

Features are displayed on the Current industrial land use map on [page 54 >](#)

ID	Location	Company	Address	Activity	Category
A	On site	Letterbox Graphics Ltd	Island Site, Eskdale Road, Uxbridge, Greater London, UB8 2RT	Signs	Industrial Products
A	On site	Shelter Tech UK Ltd	Island Site Eskdale Road, Uxbridge, Greater London, UB8 2RT	Air and Water Filtration	Industrial Products
A	On site	Electricity Sub Station	Greater London, UB8	Electrical Features	Infrastructure and Facilities





ID	Location	Company	Address	Activity	Category
<b>A</b>	<b>On site</b>	<b>Industrial Estate</b>	<b>Greater London, UB8</b>	<b>Business Parks and Industrial Estates</b>	<b>Industrial Features</b>
B	24m S	Risheena Ltd	Unit 6, Eskdale Road, Uxbridge, Greater London, UB8 2RT	Industrial Coatings and Finishings	Industrial Products
C	27m W	Electricity Sub Station	Greater London, UB8	Electrical Features	Infrastructure and Facilities
D	30m N	Fix Auto Uxbridge	Unit A, Eskdale Road, Uxbridge, Greater London, UB8 2RT	Vehicle Repair, Testing and Servicing	Repair and Servicing
B	32m SE	Metro Plating	Unit 3 Chartridge Development, Eskdale Road, Uxbridge, Greater London, UB8 2RT	Industrial Coatings and Finishings	Industrial Products
C	36m W	A D Williams	Impact Body Shop Ltd, Eskdale Road, Uxbridge, Greater London, UB8 2RT	Vehicle Repair, Testing and Servicing	Repair and Servicing
B	39m SW	Dowell Enterprises UK Ltd	Carleton House 549, Eskdale Road, Uxbridge, Greater London, UB8 2RT	Adhesives and Sealants	Industrial Products
D	48m N	Pylon	Greater London, UB8	Electrical Features	Infrastructure and Facilities
C	51m W	Progress Products	Progress Products, Eskdale Road, Uxbridge, Greater London, UB8 2RT	Photographic and Optical Equipment	Consumer Products
C	54m NW	Parsia M S S Ltd	Unit G, Eskdale Road, Uxbridge, Greater London, UB8 2RT	Office and Shop Equipment	Industrial Products
C	64m SW	Pylon	Greater London, UB8	Electrical Features	Infrastructure and Facilities
E	67m NE	Midas Industrial Estate	Greater London, UB8	Business Parks and Industrial Estates	Industrial Features
B	68m SE	Uxbridge Auto Centre Ltd	Unit 1 Chiltern Business Village, Arundel Road, Uxbridge, Greater London, UB8 2SN	Vehicle Repair, Testing and Servicing	Repair and Servicing
B	68m SE	K S Auto Services	Unit 4 Chiltern Business Village, Arundel Road, Uxbridge, Greater London, UB8 2SN	Vehicle Repair, Testing and Servicing	Repair and Servicing
B	71m S	Zeus Metal Fabrications	Unit 7 Chiltern Business Village, Arundel Road, Uxbridge, Greater London, UB8 2SN	Metals Manufacturers, Fabricators and Stockholders	Industrial Products
B	76m SW	Inplas	Unit 3a, Eskdale Road, Uxbridge, Greater London, UB8 2RT	Rubber, Silicones and Plastics	Industrial Products
E	82m NE	1st Ready Fit	Unit 7 Midas Industrial Estate, Longbridge Way, Uxbridge, Greater London, UB8 2YT	Vehicle Repair, Testing and Servicing	Repair and Servicing



ID	Location	Company	Address	Activity	Category
B	85m S	Safe 'n' Sound	Unit 11 Chiltern Business Village, Arundel Road, Uxbridge, Greater London, UB8 2SN	Workwear	Industrial Products
E	91m NE	L & J Metal Work	Unit 8 Midas Industrial Estate, Longbridge Way, Uxbridge, Greater London, UB8 2YT	Fences, Gates and Railings	Industrial Products
B	91m S	A R Valli & Sons	Chiltern Business Village, Arundel Road, Uxbridge, Greater London, UB8 2SN	Precision Engineers	Engineering Services
B	92m S	Power Engineering	Unit 12 Chiltern Business Village, Arundel Road, Uxbridge, Greater London, UB8 2SN	Vehicle Repair, Testing and Servicing	Repair and Servicing
B	96m S	Chiltern Business Village	Greater London, UB8	Business Parks and Industrial Estates	Industrial Features
E	96m NE	X L B Signs	Unit 9 Midas Industrial Estate, Longbridge Way, Uxbridge, Greater London, UB8 2YT	Signs	Industrial Products
B	99m S	E B M	Unit 19 Chiltern Business Village, Arundel Road, Uxbridge, Greater London, UB8 2SN	Office and Shop Equipment	Industrial Products
F	105m N	Electricity Sub Station	Greater London, UB8	Electrical Features	Infrastructure and Facilities
E	105m NE	Bearing Traders Ltd	Unit 10 Midas Industrial Estate, Longbridge Way, Uxbridge, Greater London, UB8 2YT	General Purpose Machinery	Industrial Products
B	109m S	Linkcare	Unit 15 Chiltern Business Village, Arundel Road, Uxbridge, Greater London, UB8 2SN	Fences, Gates and Railings	Industrial Products
B	117m SE	R N R Studios	Barton Buildings, Arundel Road, Uxbridge, Greater London, UB8 2RR	Recording Studios and Record Companies	IT, Advertising, Marketing and Media Services
F	117m NE	Electricity Sub Station	Greater London, UB8	Electrical Features	Infrastructure and Facilities
E	119m E	Practical Car & Van Rental	Unit 1, Ashley Road, Uxbridge, Greater London, UB8 2GA	Vehicle Hire and Rental	Hire Services
1	121m W	Pylon	Buckinghamshire, UB8	Electrical Features	Infrastructure and Facilities
E	128m E	Galaxy Insulation & Dry Lining	Unit 2, Ashley Road, Uxbridge, Greater London, UB8 2GA	General Construction Supplies	Industrial Products
E	134m E	Electricity Sub Station	Greater London, UB8	Electrical Features	Infrastructure and Facilities
E	146m NE	Electricity Sub Station	Greater London, UB8	Electrical Features	Infrastructure and Facilities



ID	Location	Company	Address	Activity	Category
F	152m N	Hirebase	Cowley Mill Trading Estate, Longbridge Way, Uxbridge, Greater London, UB8 2YG	Construction and Tool Hire	Hire Services
B	153m SE	T F A	8, Arundel Road, Uxbridge, Greater London, UB8 2RR	Construction Completion Services	Construction Services
E	159m E	Tecline	Ashley House, Ashley Road, Uxbridge, Greater London, UB8 2GA	Service Industry Equipment Repairs	Repair and Servicing
E	159m E	Fri-jado	Ashley House, Ashley Road, Uxbridge, Greater London, UB8 2GA	Food and Beverage Industry Machinery	Industrial Products
F	162m NE	Electricity Sub Station	Greater London, UB8	Electrical Features	Infrastructure and Facilities
F	171m N	Chair Cover Depot	Unit 7 Cowley Mill Trading Estate, Longbridge Way, Uxbridge, Greater London, UB8 2YG	Textiles, Fabrics, Silk and Machinery	Industrial Products
B	174m SE	Thames Materials Ltd	Unit 4 Sarum Complex, Salisbury Road, Uxbridge, Greater London, UB8 2RZ	Distribution and Haulage	Transport, Storage and Delivery
B	178m S	Pylon	Greater London, UB8	Electrical Features	Infrastructure and Facilities
B	180m SE	Rentokil	Unit 2 Sarum Complex, Salisbury Road, Uxbridge, Greater London, UB8 2RZ	Pest and Vermin Control	Contract Services
B	180m SE	Initial Medical	Unit 2 Sarum Complex, Salisbury Road, Uxbridge, Greater London, UB8 2RZ	Medical Waste Disposal Services	Health Support Services
J	184m E	Industrial Park	Greater London, UB8	Business Parks and Industrial Estates	Industrial Features
F	186m N	Fagioli Ltd	Brook House, 54a, Cowley Mill Road, Uxbridge, Greater London, UB8 2QE	Industrial Engineers	Engineering Services
B	187m S	Pylon	Greater London, UB8	Electrical Features	Infrastructure and Facilities
B	189m SE	Serdi UK Ltd	Unit 1 Sarum Complex, Salisbury Road, Uxbridge, Greater London, UB8 2RZ	Vehicle Repair, Testing and Servicing	Repair and Servicing
B	193m SE	Energy Light Bulbs	Unit T2, Arundel Road, Uxbridge, Greater London, UB8 2RP	Lampshades and Lighting	Consumer Products
B	193m SE	Unit Shop Fronts	Unit T1b, Arundel Road, Uxbridge, Greater London, UB8 2RP	General Construction Supplies	Industrial Products
B	195m SE	Works	Greater London, UB8	Unspecified Works Or Factories	Industrial Features



ID	Location	Company	Address	Activity	Category
F	196m N	C W P M Consulting Ltd	Unit 7 Brook Business Centre, Cowley Mill Road, Uxbridge, Greater London, UB8 2FX	Structural Engineers	Engineering Services
B	200m SE	Neat Car Parts	Unit T1a, Arundel Road, Uxbridge, Greater London, UB8 2RP	Vehicle Parts and Accessories	Motoring
B	207m SE	Pylon	Greater London, UB8	Electrical Features	Infrastructure and Facilities
F	211m N	B C H London	Unit 10 Brook Business Centre, Cowley Mill Road, Uxbridge, Greater London, UB8 2FX	Vehicle Hire and Rental	Hire Services
2	212m E	Industria Bearings & Transmissions Ltd	76, Cowley Mill Road, Uxbridge, Greater London, UB8 2QE	Distribution and Haulage	Transport, Storage and Delivery
K	218m NW	Pylon	Buckinghamshire, SL0	Electrical Features	Infrastructure and Facilities
J	219m E	Riverside Garage	Unit 3, Wallingford Road, Uxbridge, Greater London, UB8 2RW	Vehicle Repair, Testing and Servicing	Repair and Servicing
3	221m SE	Team a M	Sarum Complex, Salisbury Road, Uxbridge, Greater London, UB8 2RZ	Distribution and Haulage	Transport, Storage and Delivery
F	222m N	Brook Business Centre	Greater London, UB8	Business Parks and Industrial Estates	Industrial Features
B	230m SE	Uxbridge Industrial Estate	Greater London, UB8	Business Parks and Industrial Estates	Industrial Features
B	231m SE	Porsche Torque	Unit 2, Arundel Road, Uxbridge, Greater London, UB8 2RP	Vehicle Repair, Testing and Servicing	Repair and Servicing
B	231m SE	Kimal Plc	Arundel Road, Uxbridge, Greater London, UB8 2SA	Medical Equipment, Supplies and Pharmaceuticals	Industrial Products
F	232m N	Electricity Sub Station	Greater London, UB8	Electrical Features	Infrastructure and Facilities
F	238m N	Bermuda Forwarders UK	Unit 3 Brook Business Centre, Cowley Mill Road, Uxbridge, Greater London, UB8 2FX	Distribution and Haulage	Transport, Storage and Delivery
B	240m SE	Prestige a R C Ltd	Unit 1, Arundel Road, Uxbridge, Greater London, UB8 2RP	Vehicle Repair, Testing and Servicing	Repair and Servicing
L	240m E	I P M Ltd	Gazelle Buildings, Wallingford Road, Uxbridge, Greater London, UB8 2SX	General Construction Supplies	Industrial Products



ID	Location	Company	Address	Activity	Category
L	241m E	Mobility Station	Unit 2c Gazelle Buildings, Wallingford Road, Uxbridge, Greater London, UB8 2RW	Disability and Mobility Equipment	Consumer Products
F	242m N	Boldgate Commercial Services Ltd	Unit 12 Brook Business Centre, Cowley Mill Road, Uxbridge, Greater London, UB8 2FX	Service Industry Equipment Repairs	Repair and Servicing
K	242m W	Pylon	Buckinghamshire, SLO	Electrical Features	Infrastructure and Facilities
B	247m SE	Sigma Signs Ltd	Unit 4b Arun Building, Arundel Road, Uxbridge, Greater London, UB8 2RP	Signs	Industrial Products

This data is sourced from Ordnance Survey.

## 4.2 Current or recent petrol stations

<b>Records within 500m</b>	<b>1</b>
----------------------------	----------

Open, closed, under development and obsolete petrol stations.

Features are displayed on the Current industrial land use map on [page 54 >](#)

ID	Location	Company	Address	LPG	Status
F	281m N	PACE	St Johns Road, Cowley Mill Road, Uxbridge Moor, Uxbridge, Outer London, UB8 2UR	Not Applicable	Obsolete

This data is sourced from Experian.

## 4.3 Electricity cables

<b>Records within 500m</b>	<b>28</b>
----------------------------	-----------

High voltage underground electricity transmission cables.

Features are displayed on the Current industrial land use map on [page 54 >](#)

ID	Location	Cable Set	Cable Route	Details	
B	97m W	-	-	Cable Make: - Cable Type: PILOT Operating Voltage (kV): -	Year of installation: Not specified Cable in tunnel? Not specified
B	97m W	IVER-NORTH HYDE 12 CABLE SECT 03	IVER - NORTH HYDE 2	Cable Make: BICC 275KV OIL Cable Type: A/C Operating Voltage (kV): 275	Year of installation: 1967 Cable in tunnel? Not specified





ID	Location	Cable Set	Cable Route	Details	
B	98m W	-	-	Cable Make: - Cable Type: PILOT Operating Voltage (kV): -	Year of installation: Not specified Cable in tunnel? Not specified
B	103m SW	-	-	Cable Make: - Cable Type: PILOT Operating Voltage (kV): -	Year of installation: Not specified Cable in tunnel? Not specified
B	103m SW	-	-	Cable Make: - Cable Type: PILOT Operating Voltage (kV): -	Year of installation: Not specified Cable in tunnel? Not specified
B	103m SW	IVER-NORTH HYDE 11 CABLE SECT 03	IVER - NORTH HYDE 1	Cable Make: BICC 275KV OIL Cable Type: A/C Operating Voltage (kV): 275	Year of installation: 1967 Cable in tunnel? No
B	104m SW	-	-	Cable Make: - Cable Type: PILOT Operating Voltage (kV): -	Year of installation: Not specified Cable in tunnel? Not specified
G	104m W	-	-	Cable Make: - Cable Type: PILOT Operating Voltage (kV): -	Year of installation: Not specified Cable in tunnel? Not specified
G	105m W	IVER-NORTH HYDE 12 CABLE SECT 02	IVER - NORTH HYDE 2	Cable Make: BICC 275KV OIL Cable Type: A/C Operating Voltage (kV): 275	Year of installation: 1967 Cable in tunnel? Not specified
G	105m W	-	-	Cable Make: - Cable Type: PILOT Operating Voltage (kV): -	Year of installation: Not specified Cable in tunnel? Not specified
G	110m W	-	-	Cable Make: - Cable Type: PILOT Operating Voltage (kV): -	Year of installation: Not specified Cable in tunnel? Not specified
G	110m W	-	-	Cable Make: - Cable Type: PILOT Operating Voltage (kV): -	Year of installation: Not specified Cable in tunnel? Not specified
G	110m W	IVER-NORTH HYDE 11 CABLE SECT 02	IVER - NORTH HYDE 1	Cable Make: BICC 275KV OIL Cable Type: A/C Operating Voltage (kV): 275	Year of installation: 1967 Cable in tunnel? No
G	111m W	-	-	Cable Make: - Cable Type: PILOT Operating Voltage (kV): -	Year of installation: Not specified Cable in tunnel? Not specified
N	332m S	-	-	Cable Make: - Cable Type: PILOT Operating Voltage (kV): -	Year of installation: Not specified Cable in tunnel? Not specified



ID	Location	Cable Set	Cable Route	Details	
N	332m S	-	-	Cable Make: - Cable Type: PILOT Operating Voltage (kV): -	Year of installation: Not specified Cable in tunnel? Not specified
N	332m S	IVER-NORTH HYDE 11 CABLE SECT 04	IVER - NORTH HYDE 1	Cable Make: BICC 275KV OIL Cable Type: A/C Operating Voltage (kV): 275	Year of installation: 1967 Cable in tunnel? No
N	333m S	-	-	Cable Make: - Cable Type: PILOT Operating Voltage (kV): -	Year of installation: Not specified Cable in tunnel? Not specified
N	341m S	-	-	Cable Make: - Cable Type: PILOT Operating Voltage (kV): -	Year of installation: Not specified Cable in tunnel? Not specified
N	341m S	IVER-NORTH HYDE 12 CABLE SECT 04	IVER - NORTH HYDE 2	Cable Make: BICC 275KV OIL Cable Type: A/C Operating Voltage (kV): 275	Year of installation: 1967 Cable in tunnel? Not specified
N	341m S	-	-	Cable Make: - Cable Type: PILOT Operating Voltage (kV): -	Year of installation: Not specified Cable in tunnel? Not specified
P	374m NW	-	-	Cable Make: - Cable Type: PILOT Operating Voltage (kV): -	Year of installation: Not specified Cable in tunnel? Not specified
P	374m NW	-	-	Cable Make: - Cable Type: PILOT Operating Voltage (kV): -	Year of installation: Not specified Cable in tunnel? Not specified
P	375m NW	IVER-NORTH HYDE 11 CABLE SECT 01	IVER - NORTH HYDE 1	Cable Make: BICC 275KV OIL Cable Type: A/C Operating Voltage (kV): 275	Year of installation: 1967 Cable in tunnel? No
P	375m NW	IVER-NORTH HYDE 12 CABLE SECT 01	IVER - NORTH HYDE 2	Cable Make: BICC 275KV OIL Cable Type: A/C Operating Voltage (kV): 275	Year of installation: 1967 Cable in tunnel? Not specified
P	375m NW	-	-	Cable Make: - Cable Type: PILOT Operating Voltage (kV): -	Year of installation: Not specified Cable in tunnel? Not specified
P	375m NW	-	-	Cable Make: - Cable Type: PILOT Operating Voltage (kV): -	Year of installation: Not specified Cable in tunnel? Not specified
P	375m N	-	-	Cable Make: - Cable Type: PILOT Operating Voltage (kV): -	Year of installation: Not specified Cable in tunnel? Not specified

*This data is sourced from National Grid.*



## 4.4 Gas pipelines

**Records within 500m****0**

High pressure underground gas transmission pipelines.

*This data is sourced from National Grid.*

## 4.5 Sites determined as Contaminated Land

**Records within 500m****0**

Contaminated Land Register of sites designated under Part 2a of the Environmental Protection Act 1990.

*This data is sourced from Local Authority records.*

## 4.6 Control of Major Accident Hazards (COMAH)

**Records within 500m****2**

Control of Major Accident Hazards (COMAH) sites. This data includes upper and lower tier sites, and includes a historical archive of COMAH sites and Notification of Installations Handling Hazardous Substances (NIHHS) records.

Features are displayed on the Current industrial land use map on [page 54 >](#)

ID	Location	Company	Address	Operational status	Tier
8	367m E	British Gas	British Gas, Uxbridge Holder Station, Cowley Mill Road, Uxbridge	Historical NIHHS Site	-
10	469m SE	Calor Gas Ltd	Calor Gas Ltd, Wallingford Road, Uxbridge, UB8 2RW	Historical NIHHS Site	-

*This data is sourced from the Health and Safety Executive.*

## 4.7 Regulated explosive sites

**Records within 500m****0**

Sites registered and licensed by the Health and Safety Executive under the Manufacture and Storage of Explosives Regulations 2005 (MSER). The last update to this data was in April 2011.

*This data is sourced from the Health and Safety Executive.*



## 4.8 Hazardous substance storage/usage

Records within 500m

0

Consents granted for a site to hold certain quantities of hazardous substances at or above defined limits in accordance with the Planning (Hazardous Substances) Regulations 2015.

*This data is sourced from Local Authority records.*

## 4.9 Historical licensed industrial activities (IPC)

Records within 500m

2

Integrated Pollution Control (IPC) records of substance releases to air, land and water. This data represents a historical archive as the IPC regime has been superseded.

Features are displayed on the Current industrial land use map on [page 54 >](#)

ID	Location	Details	
B	57m SE	Operator: Bodycote Metallurgical Coatings (uxbridge) Ltd Address: Unit 5, Chartridge Development, Eskdale Road, Uxbridge, Middlesex, UB8 2RT Process: Inorganic Chemical Processes Permit Number: AN9450	Original Permit Number: IPCAPP Date Approved: 10-3-1995 Effective Date: 17-3-1995 Status: Superseded By Variation
B	57m SE	Operator: Bodycote Metallurgical Coatings (uxbridge) Ltd Address: Unit 5, Chartridge Development, Eskdale Road, Uxbridge, Middlesex, UB8 2RT Process: Inorganic Chemical Processes Permit Number: BC9216	Original Permit Number: IPCMINVAR Date Approved: 24-11-1998 Effective Date: 30-11-1998 Status: Revoked - Now Ippc

*This data is sourced from the Environment Agency and Natural Resources Wales.*

## 4.10 Licensed industrial activities (Part A(1))

Records within 500m

4

Records of Part A(1) installations regulated under the Environmental Permitting (England and Wales) Regulations 2016 for the release of substances to the environment.

Features are displayed on the Current industrial land use map on [page 54 >](#)

ID	Location	Details	
B	36m S	Operator: WEST MIDDLESEX SURFACE TREATMENTS LIMITED Installation Name: Eskdale Road Treatment Plant EPR/DP3433LC Process: SURFACE TREATING METALS AND PLASTICS; ELECTROLYTIC/CHEMICAL >30 CU M Permit Number: DP3433LC Original Permit Number: DP3433LC	EPR Reference: EPR/DP3433LC Issue Date: 10/04/2006 Effective Date: 10/04/2006 Last date noted as effective: 25/06/2024 Status: Superseded
B	36m S	Operator: NASMYTH ENTERPRISES LIMITED Installation Name: Eskdale Road Surface Treatment Plant - EPR/EP3140QG Process: SURFACE TREATING METALS AND PLASTICS; ELECTROLYTIC/CHEMICAL >30 CU M Permit Number: EP3140QG Original Permit Number: EP3140QG	EPR Reference: EPR/EP3140QG Issue Date: 15/12/2022 Effective Date: 21/06/2022 Last date noted as effective: 25/06/2024 Status: Surrendered
Q	413m SE	Operator: LHT ANODISERS LIMITED Installation Name: LHT Anodisers Ltd Process: SURFACE TREATING METALS AND PLASTICS; ELECTROLYTIC/CHEMICAL >30 CU M Permit Number: AP3233BR Original Permit Number: AP3233BR	EPR Reference: EPR/AP3233BR Issue Date: 07/04/2005 Effective Date: 07/04/2005 Last date noted as effective: 25/06/2024 Status: Superseded
Q	413m SE	Operator: UNITED ANODISERS LIMITED Installation Name: LHT Anodisers Ltd EPR/QP3734NF Process: SURFACE TREATING METALS AND PLASTICS; ELECTROLYTIC/CHEMICAL >30 CU M Permit Number: QP3734NF Original Permit Number: QP3734NF	EPR Reference: EPR/QP3734NF Issue Date: 16/01/2024 Effective Date: 15/06/2013 Last date noted as effective: 25/06/2024 Status: Surrendered

This data is sourced from the Environment Agency and Natural Resources Wales.

## 4.11 Licensed pollutant release (Part A(2)/B)

<b>Records within 500m</b>	<b>10</b>
----------------------------	-----------

Records of Part A(2) and Part B installations regulated under the Environmental Permitting (England and Wales) Regulations 2016 for the release of substances to the environment.

Features are displayed on the Current industrial land use map on [page 54 >](#)

ID	Location	Address	Details	
B	27m SW	West Middlesex Plating, Eskdale Rd, Uxbridge, Middlesex, UB8 2RT	Process: Chemical & Acid Processes Status: Historical Permit Permit Type: Part B	Enforcement: No Enforcement Notified Date of enforcement: No Enforcement Notified Comment: No Enforcement Notified





ID	Location	Address	Details	
C	32m W	Impact Bodyshop, Eskdale Road, Uxbridge, Middlesex, UB8 2RT	Process: Respraying of Road Vehicles Status: Historical Permit Permit Type: Part B	Enforcement: No Enforcement Notified Date of enforcement: No Enforcement Notified Comment: No Enforcement Notified
C	34m W	Impact Bodyshop, Eskdale Road, Uxbridge, Middlesex, UB8 2RT	Process: Respraying of Road Vehicles Status: Current Permit Permit Type: Part B	Enforcement: No Enforcement Notified Date of enforcement: No Enforcement Notified Comment: No Enforcement Notified
B	80m SE	Trimite Limited, Arundel Road, Uxbridge, Middlesex, UB8 2SD	Process: Manufacture of Coating Materials Status: Historical Permit Permit Type: Part B	Enforcement: No Enforcement Notified Date of enforcement: No Enforcement Notified Comment: No Enforcement Notified
E	82m NE	Apw Electronics Limited, Uxbridge Site, Ashley Road, Uxbridge, Middlesex, UB8 2SQ	Process: Coating Processes Status: Historical Permit Permit Type: Part B	Enforcement: No Enforcement Notified Date of enforcement: No Enforcement Notified Comment: No Enforcement Notified
J	171m E	Trimite Ltd, Arundel Road, Uxbridge, Middlesex, UB8 2SD	Process: Manufacture of Coating Materials Status: Historical Permit Permit Type: Part B	Enforcement: No Enforcement Notified Date of enforcement: No Enforcement Notified Comment: No Enforcement Notified
F	188m N	H & S Enamelling, Cowley Mill Ind Est	Process: Coating Processes Status: Historical Permit Permit Type: Part B	Enforcement: No Enforcement Notified Date of enforcement: No Enforcement Notified Comment: No Enforcement Notified
F	258m N	Shell Uxbridge, St Johns Rd, Uxbridge, UB8 2UY	Process: Unloading of Petrol into Storage at Service Stations Status: Historical Permit Permit Type: Part B	Enforcement: No Enforcement Notified Date of enforcement: No Enforcement Notified Comment: No Enforcement Notified
5	312m E	Dbs Coachworks, Wallingford Rd, UB8 2RW	Process: Respraying of Road Vehicles Status: Historical Permit Permit Type: Part B	Enforcement: No Enforcement Notified Date of enforcement: No Enforcement Notified Comment: No Enforcement Notified
7	341m E	Nirmal Coachworks, Wallingford Rd	Process: Respraying of Road Vehicles Status: Historical Permit Permit Type: Part B	Enforcement: No Enforcement Notified Date of enforcement: No Enforcement Notified Comment: No Enforcement Notified

*This data is sourced from Local Authority records.*



## 4.12 Radioactive Substance Authorisations

Records within 500m

0

Records of the storage, use, accumulation and disposal of radioactive substances regulated under the Radioactive Substances Act 1993.

*This data is sourced from the Environment Agency and Natural Resources Wales.*

## 4.13 Licensed Discharges to controlled waters

Records within 500m

12

Discharges of treated or untreated effluent to controlled waters under the Water Resources Act 1991.

Features are displayed on the Current industrial land use map on [page 54 >](#)

ID	Location	Address	Details	
H	148m NW	OFFICE DEVELOPMENT ADJ. TO THE BUNG, OFFICE DEVELOPMENT ADJ. TO THE, BUNGALOW, LONGBRIDGE, UXBRIDGE, MIDDLESEX	Effluent Type: SEWAGE DISCHARGES - FINAL/TREATED EFFLUENT - NOT WATER COMPANY Permit Number: CTWC.0624 Permit Version: 2 Receiving Water: RIVER COLNE	Status: VARIED BY APPLICATION - (WRA 91 SCHED 10 - AS AMENDED BY ENV ACT 1995) Issue date: 29/01/1986 Effective Date: 17/09/1986 Revocation Date: -
H	148m NW	OFFICE DEVELOPMENT ADJ. TO THE BUNG, OFFICE DEVELOPMENT ADJ. TO THE, BUNGALOW, LONGBRIDGE, UXBRIDGE, MIDDLESEX	Effluent Type: SEWAGE DISCHARGES - FINAL/TREATED EFFLUENT - NOT WATER COMPANY Permit Number: CTWC.0624 Permit Version: 1 Receiving Water: RIVER COLNE	Status: TRANSFERRED FROM COPA 1974 Issue date: 29/01/1986 Effective Date: 29/01/1986 Revocation Date: 16/09/1986
H	148m NW	SITE ADJ. TO THE BUNGALOW, LONGBRID, SITE ADJ. TO THE BUNGALOW, LONGB, RIDGE, UXBRIDGE, MIDDLESEX	Effluent Type: MISCELLANEOUS DISCHARGES - SURFACE WATER Permit Number: CTWC.0625 Permit Version: 1 Receiving Water: RIVER COLNE	Status: REVOKED - UNSPECIFIED Issue date: 29/01/1986 Effective Date: 29/01/1986 Revocation Date: 22/05/1996
4	285m NE	COWLEY MILL PHASE II, COWLEY MILL R, COWLEY MILL PHASE II, COWLEY MIL, L ROAD, UXBRIDGE, MIDDLESEX	Effluent Type: MISCELLANEOUS DISCHARGES - SURFACE WATER Permit Number: CNTW.0169 Permit Version: 1 Receiving Water: RIVER COLNE	Status: REVOKED - UNSPECIFIED Issue date: 21/11/1989 Effective Date: 21/11/1989 Revocation Date: 08/10/1996
M	302m N	BOURNE HOUSE, WILLOW CENTRE, COWLEY, BOURNE HOUSE, WILLOW CENTRE, COW, LEY MILL ROAD, UXBRIDGE, MIDDLES, EX	Effluent Type: MISCELLANEOUS DISCHARGES - SURFACE WATER Permit Number: CTWC.3026 Permit Version: 1 Receiving Water: TRIBUTARY OF THE RIVER COLNE	Status: REVOKED - UNSPECIFIED Issue date: 09/01/1989 Effective Date: 09/01/1989 Revocation Date: 08/10/1996

ID	Location	Address	Details	
M	302m N	SUFFOLK HOUSE, LONGBRIDGE, SLOUGH R, SUFFOLK HOUSE, LONGBRIDGE, SLOUG, H ROAD, IVER, BUCKS, SLO OEB, SLO OEB	Effluent Type: SEWAGE DISCHARGES - FINAL/TREATED EFFLUENT - NOT WATER COMPANY Permit Number: CTCU.0907 Permit Version: 1 Receiving Water: GRAVEL STRATA	Status: TRANSFERRED FROM WRA 1963 Issue date: 07/11/1979 Effective Date: 07/11/1979 Revocation Date: 25/10/2006
O	388m N	SCIENTIFIC EQUIPMENT DIVISION, RIVE, SCIENTIFIC EQUIPMENT DIVISION, R, IVERSIDE WAY, UXBRIDGE, UB8 2YF	Effluent Type: MISCELLANEOUS DISCHARGES - SURFACE WATER Permit Number: CTWC.0540 Permit Version: 1 Receiving Water: RIVER COLNE	Status: REVOKED (WRA 91, S88 & SCHED 10 AS AMENDED BY ENV ACT 1995) Issue date: 13/01/1986 Effective Date: 13/01/1986 Revocation Date: 07/10/1998
O	388m N	SANYO GALLenkAMP, RIVERSIDE WAY, UX, SANYO GALLenkAMP, RIVERSIDE WAY, UXBRIDGE, MIDDLESEX UB8 2YF	Effluent Type: TRADE DISCHARGES - COOLING WATER Permit Number: CTRC.1658 Permit Version: 1 Receiving Water: COLNE	Status: REVOKED - UNSPECIFIED Issue date: 14/04/1980 Effective Date: 14/04/1980 Revocation Date: 29/04/1993
R	419m NE	SCIENTIFIC EQUIPMENT DIVISION, RIVE, SCIENTIFIC EQUIPMENT DIVISION, R, IVERSIDE WAY, UXBRIDGE, UB8 2YF	Effluent Type: MISCELLANEOUS DISCHARGES - SURFACE WATER Permit Number: CTWC.0541 Permit Version: 1 Receiving Water: RIVER COLNE	Status: REVOKED - UNSPECIFIED Issue date: 13/01/1986 Effective Date: 13/01/1986 Revocation Date: 30/04/1992
9	454m NW	FARM COTTAGE, MANSFIELD FARM, SLOUG, FARM COTTAGE, MANSFIELD FARM, SL, OUGH ROAD, IVER HEATH, SLOUGH, B, ERKS	Effluent Type: SEWAGE DISCHARGES - FINAL/TREATED EFFLUENT - NOT WATER COMPANY Permit Number: CTWC.2707 Permit Version: 1 Receiving Water: UNNAMED TRIB OF ALDER BOURNE	Status: LAPSED UNDER SCHEDULE 23 ENVIRONMENT ACT 1995 Issue date: 12/08/1988 Effective Date: 12/08/1988 Revocation Date: 01/10/1996
R	458m NE	SANYO GALLenkAMP, RIVERSIDE WAY, UX, SANYO GALLenkAMP, RIVERSIDE WAY, UXBRIDGE, MIDDLESEX UB8 2YF	Effluent Type: TRADE DISCHARGES - COOLING WATER Permit Number: CNTM.0839 Permit Version: 1 Receiving Water: RIVER COLNE	Status: REVOKED - UNSPECIFIED Issue date: 30/04/1993 Effective Date: 30/04/1993 Revocation Date: 16/01/1998
11	471m N	LONGBRIDGE, CHERRY TREE LANE, IVER HEATH, BUCKINGHAMSHIRE, SLO OEE, SLO OEE	Effluent Type: SEWAGE DISCHARGES - FINAL/TREATED EFFLUENT - NOT WATER COMPANY Permit Number: CANM.1009 Permit Version: 1 Receiving Water: TO GROUNDWATER VIA SOAKAWAY	Status: NEW CONSENT (WRA 91, S88 & SCHED 10 AS AMENDED BY ENV ACT 1995) Issue date: 03/04/2006 Effective Date: 21/03/2006 Revocation Date: -

*This data is sourced from the Environment Agency and Natural Resources Wales.*



#### 4.14 Pollutant release to surface waters (Red List)

Records within 500m	0
---------------------	---

Discharges of specified substances under the Environmental Protection (Prescribed Processes and Substances) Regulations 1991.

*This data is sourced from the Environment Agency and Natural Resources Wales.*

#### 4.15 Pollutant release to public sewer

Records within 500m	3
---------------------	---

Discharges of Special Category Effluents to the public sewer.

Features are displayed on the Current industrial land use map on [page 54 >](#)

ID	Location	Address	Details	
B	57m SE	BODYCOTE METALLURGICAL COATINGS (UXBRIDGE) LTD, UNIT 5 CHARTRIDGE DEVELOPMENT, ESKDALE ROAD, UXBRIDGE, MIDDLESEX, UB8 2RT	Permission reference: AR7645 Local Authority: LONDON BOROUGH OF HILLINGDON First received date: 01/07/2010	Last received date: 01/01/2018 Status: RECEIVED
B	57m SE	WEST MIDDLESEX SURFACE TREATMENTS LTD, UNIT 5 CHARTRIDGE DEVELOPMENT, ESKDALE ROAD, UXBRIDGE, MIDDLESEX, UB8 2RT	Permission reference: CA0085 Local Authority: LONDON BOROUGH OF HILLINGDON First received date: 01/07/2010	Last received date: 01/01/2018 Status: DEAD (APPLICATION)
B	146m SE	TRIMITE LIMITED, ARUNDEL ROAD, UXBRIDGE IND EST, DOCK ROAD, UXBRIDGE, MIDDLESEX, UB8 2SD	Permission reference: CB3250 Local Authority: LONDON BOROUGH OF HILLINGDON First received date: 02/07/2007	Last received date: 01/01/2018 Status: DEAD (APPLICATION)

*This data is sourced from the Environment Agency and Natural Resources Wales.*

#### 4.16 List 1 Dangerous Substances

Records within 500m	4
---------------------	---

Discharges of substances identified on List I of European Directive E 2006/11/EC, and regulated under the Environmental Damage (Prevention and Remediation) Regulations 2015.

Features are displayed on the Current industrial land use map on [page 54 >](#)

ID	Location	Name	Status	Receiving Water	Authorised Substances
B	34m S	West Middlesex Surface Treatments, Eskdale Rd, Uxbridge	Active	Thames Estuary	Mercury (other), Cadmium

ID	Location	Name	Status	Receiving Water	Authorised Substances
I	165m SW	West Middlesex Plating Co Ltd Eskdale Rd Middx Ub8	Not Active	-	-
I	165m SW	West Middlesex Plating Co Ltd Eskdale Rd Middx Ub8	Not Active	-	-
I	165m SW	West Middlesex Plating Co Ltd, Eskdale Rd, Middx Ub8	Active	Thames Estuary	Mercury (other), Cadmium

*This data is sourced from the Environment Agency and Natural Resources Wales.*

## 4.17 List 2 Dangerous Substances

### Records within 500m

1

Discharges of substances identified on List II of European Directive E 2006/11/EC, and regulated under the Environmental Damage (Prevention and Remediation) Regulations 2015.

Features are displayed on the Current industrial land use map on [page 54 >](#)

ID	Location	Name	Status	Receiving Water	Authorised Substances
Q	400m SE	Lht Group Holdings, Wallingford Rd, Uxbridge	Not Active	-	Chromium, Copper, Lead, Nickel, Zinc

*This data is sourced from the Environment Agency and Natural Resources Wales.*

## 4.18 Pollution Incidents (EA/NRW)

### Records within 500m

9

Records of substantiated pollution incidents. Since 2006 this data has only included category 1 (major) and 2 (significant) pollution incidents.

Features are displayed on the Current industrial land use map on [page 54 >](#)

ID	Location	Details	
D	80m NW	Incident Date: 24/10/2003 Incident Identification: 198078 Pollutant: Oils and Fuel Pollutant Description: Unidentified Oil	Water Impact: Category 3 (Minor) Land Impact: Category 4 (No Impact) Air Impact: Category 4 (No Impact)
D	85m NW	Incident Date: 16/08/2001 Incident Identification: 24586 Pollutant: Pollutant Not Identified Pollutant Description: Not Identified	Water Impact: Category 3 (Minor) Land Impact: Category 3 (Minor) Air Impact: Category 4 (No Impact)





ID	Location	Details	
F	88m N	Incident Date: 15/08/2003 Incident Identification: 182296 Pollutant: Sewage Materials Pollutant Description: Crude Sewage	Water Impact: Category 2 (Significant) Land Impact: Category 4 (No Impact) Air Impact: Category 3 (Minor)
F	141m N	Incident Date: 27/10/2003 Incident Identification: 198413 Pollutant: Sewage Materials Pollutant Description: Crude Sewage	Water Impact: Category 3 (Minor) Land Impact: Category 4 (No Impact) Air Impact: Category 3 (Minor)
H	141m NW	Incident Date: 25/10/2003 Incident Identification: 198125 Pollutant: Oils and Fuel Pollutant Description: Unidentified Oil	Water Impact: Category 3 (Minor) Land Impact: Category 4 (No Impact) Air Impact: Category 4 (No Impact)
F	171m N	Incident Date: 06/09/2002 Incident Identification: 106063 Pollutant: Sewage Materials Pollutant Description: Crude Sewage	Water Impact: Category 3 (Minor) Land Impact: Category 4 (No Impact) Air Impact: Category 4 (No Impact)
F	171m N	Incident Date: 06/09/2002 Incident Identification: 106063 Pollutant: Sewage Materials Pollutant Description: Crude Sewage	Water Impact: Category 3 (Minor) Land Impact: Category 4 (No Impact) Air Impact: Category 4 (No Impact)
6	334m NE	Incident Date: 12/11/2003 Incident Identification: 201102 Pollutant: Atmospheric Pollutants and Effects Pollutant Description: Soot/Smuts	Water Impact: Category 3 (Minor) Land Impact: Category 4 (No Impact) Air Impact: Category 3 (Minor)
O	356m N	Incident Date: 22/12/2001 Incident Identification: 49355 Pollutant: Oils and Fuel Pollutant Description: Unidentified Oil	Water Impact: Category 3 (Minor) Land Impact: Category 4 (No Impact) Air Impact: Category 4 (No Impact)

*This data is sourced from the Environment Agency and Natural Resources Wales.*

## 4.19 Pollution inventory substances

<b>Records within 500m</b>	<b>0</b>
----------------------------	----------

The pollution inventory (substances) includes reporting on annual emissions of certain regulated substances to air, controlled waters and land. A reporting threshold for each substance is also included. Where emissions fall below the reporting threshold, no value will be given. The data is given for the most recent complete year available.

*This data is sourced from the Environment Agency and the Scottish Environment Protection Agency.*

## 4.20 Pollution inventory waste transfers

Records within 500m

1

The pollution inventory (waste transfers) includes reporting on annual transfers and recovery/disposal of controlled wastes from a site. A reporting threshold for each waste type is also included. Where releases fall below the reporting threshold, no value will be given. The data is given for the most recent complete year available.

Features are displayed on the Current industrial land use map on [page 54 >](#)

ID: Q, Location: 413m SE, Permit: QP3734NF  
 Operator: United Anodisers Limited  
 Activity: SURFACE TREATING METALS AND PLASTICS; ELECTROLYTIC/CHEMICAL >30 CU M  
 Address: Lht Anodisers Limited 44 Wallingford Road Uxbridge Middlesex UB8 2SR  
 Sector: Metals, Sub-sector: Surface treatment  
 Releases:

Route	Route description	Quantity (tonnes)	Release level	EWC code	EWC description	Hazardous waste
D1	Deposit into or onto land (eg landfill, etc.)	35	Absolute Value	11 01 10	sludges and filter cakes other than those mentioned in 11 01 09	No
R4	Recycling/reclamation of metals and metal compounds	60	Absolute Value	17 04 02	aluminium	No
R11	Use of wastes obtained from any of the operations numbered R1 to R10	2	Absolute Value	20 03 01	mixed municipal waste	No

*This data is sourced from the Environment Agency and the Scottish Environment Protection Agency.*

## 4.21 Pollution inventory radioactive waste

Records within 500m

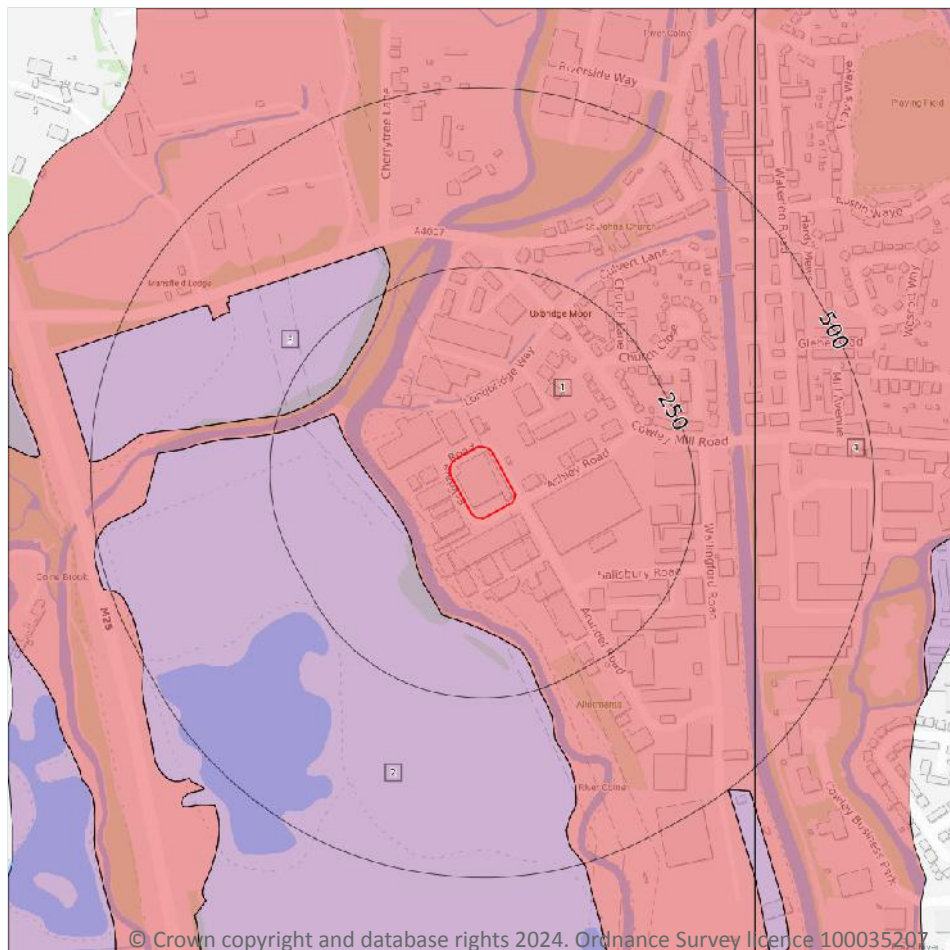
0

The pollution inventory (radioactive wastes) includes reporting on annual releases of radioactive substances from a site, including the means of release. Where releases fall below the reporting threshold, no value will be given. The data is given for the most recent complete year available.

*This data is sourced from the Environment Agency and the Scottish Environment Protection Agency.*



## 5 Hydrogeology - Superficial aquifer



- Site Outline
- Search buffers in metres (m)
- Principal
  - Secondary A
  - Secondary B
  - Secondary Undifferentiated
  - Unproductive
  - Unknown

### 5.1 Superficial aquifer

Records within 500m

4

Aquifer status of groundwater held within superficial geology.

Features are displayed on the Hydrogeology map on [page 72](#) >

ID	Location	Designation	Description
1	On site	Secondary A	Permeable layers capable of supporting water supplies at a local rather than strategic scale, and in some cases forming an important source of base flow to rivers. These are generally aquifers formerly classified as minor aquifers
2	90m SW	Principal	Geology of high intergranular and/or fracture permeability, usually providing a high level of water storage and may support water supply/river base flow on a strategic scale. Generally principal aquifers were previously major aquifers

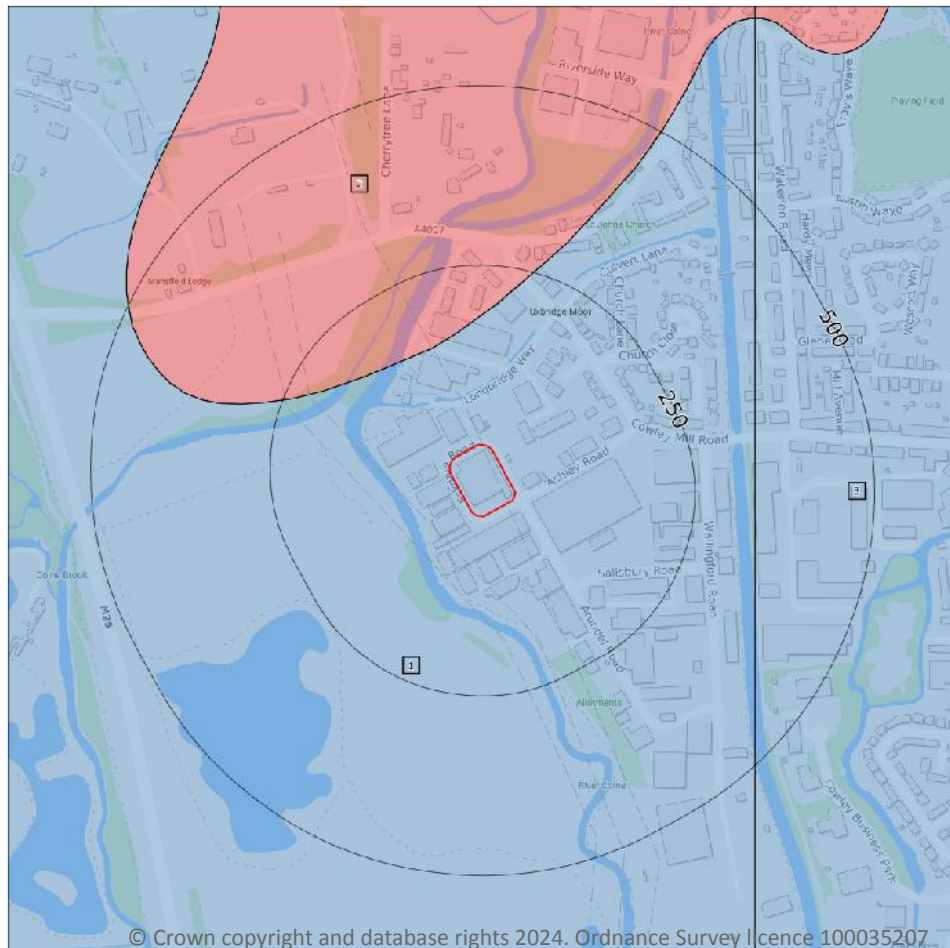


ID	Location	Designation	Description
3	193m NW	Principal	Geology of high intergranular and/or fracture permeability, usually providing a high level of water storage and may support water supply/river base flow on a strategic scale. Generally principal aquifers were previously major aquifers
4	334m E	Secondary A	Permeable layers capable of supporting water supplies at a local rather than strategic scale, and in some cases forming an important source of base flow to rivers. These are generally aquifers formerly classified as minor aquifers

*This data is sourced from the British Geological Survey, the Environment Agency and Natural Resources Wales.*



## Bedrock aquifer



- Site Outline**
- Search buffers in metres (m)**
- Principal
  - Secondary A
  - Secondary B
  - Secondary Undifferentiated
  - Unproductive

### 5.2 Bedrock aquifer

Records within 500m

3

Aquifer status of groundwater held within bedrock geology.

Features are displayed on the Bedrock aquifer map on [page 74 >](#)

ID	Location	Designation	Description
1	On site	Unproductive	These are rock layers or drift deposits with low permeability that have negligible significance for water supply or river base flow
2	148m N	Secondary A	Permeable layers capable of supporting water supplies at a local rather than strategic scale, and in some cases forming an important source of base flow to rivers. These are generally aquifers formerly classified as minor aquifers

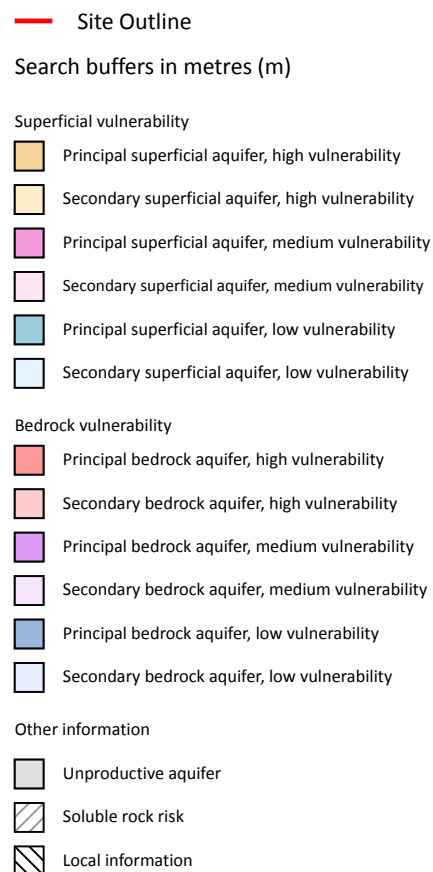
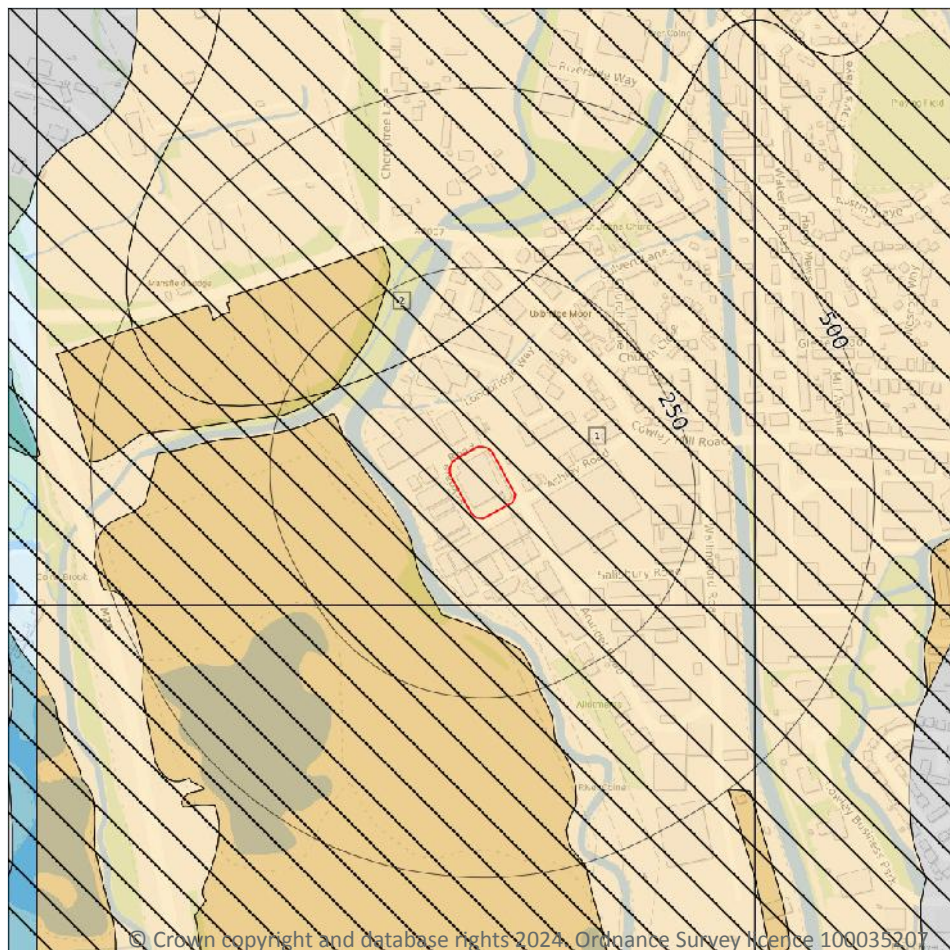


ID	Location	Designation	Description
3	334m E	Unproductive	These are rock layers or drift deposits with low permeability that have negligible significance for water supply or river base flow

*This data is sourced from the British Geological Survey, the Environment Agency and Natural Resources Wales.*



## Groundwater vulnerability



### 5.3 Groundwater vulnerability

#### Records within 50m

1

An assessment of the vulnerability of groundwater to a pollutant discharged at ground level based on the hydrological, geological, hydrogeological and soil properties within a one kilometre square grid. Groundwater vulnerability is described as High, Medium or Low as follows:

- High - Areas able to easily transmit pollution to groundwater. They are likely to be characterised by high leaching soils and the absence of low permeability superficial deposits.
- Medium - Intermediate between high and low vulnerability.
- Low - Areas that provide the greatest protection from pollution. They are likely to be characterised by low leaching soils and/or the presence of superficial deposits characterised by a low permeability.

Features are displayed on the Groundwater vulnerability map on [page 76](#) >

ID	Location	Summary	Soil / surface	Superficial geology	Bedrock geology
1	On site	<b>Summary Classification:</b> Secondary superficial aquifer - High Vulnerability <b>Combined classification:</b> Unproductive Bedrock Aquifer, Productive Superficial Aquifer	<b>Leaching class:</b> High <b>Infiltration value:</b> >70% <b>Dilution value:</b> 300- 550mm/year	<b>Vulnerability:</b> High <b>Aquifer type:</b> Secondary <b>Thickness:</b> 3-10m <b>Patchiness value:</b> <90% <b>Recharge potential:</b> Medium	<b>Vulnerability:</b> Unproductive <b>Aquifer type:</b> Unproductive <b>Flow mechanism:</b> Mixed

*This data is sourced from the British Geological Survey, the Environment Agency and Natural Resources Wales.*

## 5.4 Groundwater vulnerability- soluble rock risk

<b>Records on site</b>	<b>0</b>
------------------------	----------

This dataset identifies areas where solution features that enable rapid movement of a pollutant may be present within a 1km grid square.

*This data is sourced from the British Geological Survey and the Environment Agency.*

## 5.5 Groundwater vulnerability- local information

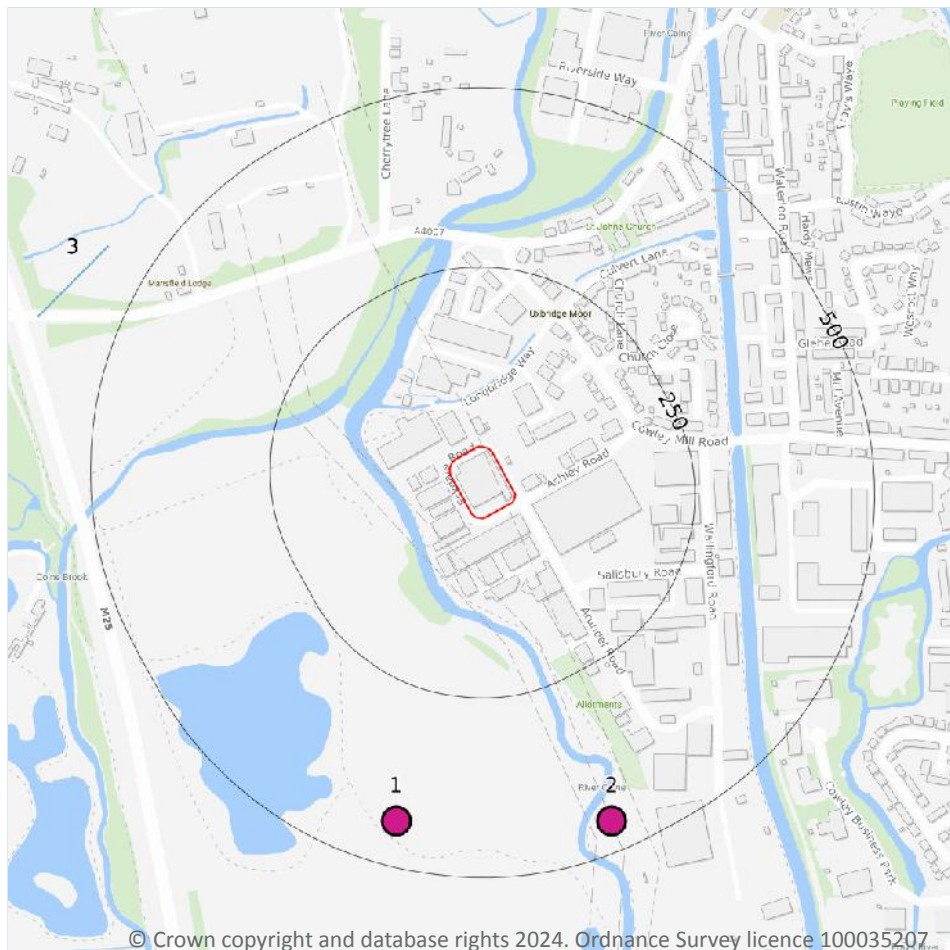
<b>Records on site</b>	<b>1</b>
------------------------	----------

This dataset identifies areas where additional local information affecting vulnerability is held by the Environment Agency. Further information can be obtained by contacting the Environment Agency local Area groundwater team through the Environment Agency National Customer Call Centre on 03798 506 506 or by email on [enquiries@environment-agency.gov.uk](mailto:enquiries@environment-agency.gov.uk) ↗.

ID	Summary	Additional information
2	Highly vulnerable Principal superficial aquifer present in river terrace gravels	Principal superficial aquifer in river terrace gravels with only a thin cover of low permeability silts and/or alluvium (shown as unproductive)

*This data is sourced from the British Geological Survey and the Environment Agency.*

## Abstractions and Source Protection Zones



- Site Outline
- Search buffers in metres (m)
- Source Protection Zone 1  
Inner catchment
- Source Protection Zone 2  
Outer catchment
- Source Protection Zone 3  
Total catchment
- Source Protection Zone 4  
Zone of Special Interest
- Source Protection Zone 1c  
Inner catchment - confined aquifer
- Source Protection Zone 2c  
Outer catchment - confined aquifer
- Source Protection Zone 3c  
Total catchment - confined aquifer
- Drinking water abstraction licences  
Polygon features
- Drinking water abstraction licences  
Linear features
- Groundwater abstraction licence (point)
- Groundwater abstraction licence (area)
- Groundwater abstraction licence (linear)
- Surface Water Abstractions (point)
- Surface Water Abstractions (area)
- Surface Water Abstractions (linear)

### 5.6 Groundwater abstractions

Records within 2000m

23

Licensed groundwater abstractions for sites extracting more than 20 cubic metres of water a day and includes active and historical records. The data may be for a single abstraction point, between two points (line data) or a larger area.

Features are displayed on the Abstractions and Source Protection Zones map on [page 78 >](#)



ID	Location	Details	
1	437m S	Status: Historical Licence No: 28/39/28/0444 Details: Process water Direct Source: THAMES GROUNDWATER Point: WET GRAVEL PIT AT IVER LANE, UXBRIDGE Data Type: Point Name: CAPE BUILDING PRODUCTS LIMITED Easting: 504500 Northing: 182700	Annual Volume (m <sup>3</sup> ): - Max Daily Volume (m <sup>3</sup> ): - Original Application No: - Original Start Date: 09/05/1979 Expiry Date: - Issue No: 100 Version Start Date: 17/05/1989 Version End Date: -
2	457m S	Status: Historical Licence No: 28/39/28/0444 Details: Process water Direct Source: THAMES GROUNDWATER Point: BOREHOLE A & B AT IVER LANE, UXBRIDGE Data Type: Point Name: CAPE BUILDING PRODUCTS LIMITED Easting: 504800 Northing: 182700	Annual Volume (m <sup>3</sup> ): - Max Daily Volume (m <sup>3</sup> ): - Original Application No: - Original Start Date: 09/05/1979 Expiry Date: - Issue No: 100 Version Start Date: 17/05/1989 Version End Date: -
-	928m W	Status: Historical Licence No: 28/39/28/0080 Details: General Farming & Domestic Direct Source: THAMES GROUNDWATER Point: WELL AT IVER HEATH, SLOUGH Data Type: Point Name: JONES Easting: 503700 Northing: 183500	Annual Volume (m <sup>3</sup> ): - Max Daily Volume (m <sup>3</sup> ): - Original Application No: - Original Start Date: 04/04/1966 Expiry Date: - Issue No: 100 Version Start Date: 25/06/1986 Version End Date: -
-	1327m N	Status: Active Licence No: TH/039/0028/064 Details: Dewatering Direct Source: THAMES GROUNDWATER Point: TAPLOW GRAVEL FORMATION AT DENHAM QUARRY, DENHAM, BUCKS Data Type: Poly4 Name: SUMMERLEAZE LIMITED Easting: 504372 Northing: 185616	Annual Volume (m <sup>3</sup> ): 1516320 Max Daily Volume (m <sup>3</sup> ): 7776 Original Application No: NPS/NA/001364 Original Start Date: 07/09/2022 Expiry Date: 31/12/2028 Issue No: 1 Version Start Date: 07/09/2022 Version End Date: -
-	1504m N	Status: Historical Licence No: 28/39/28/0610 Details: Mineral Washing Direct Source: THAMES GROUNDWATER Point: SUMMERLEAZE NEW DENHAM QUARRY, BUCKINGHAMSHIRE Data Type: Point Name: SUMMERLEAZE LIMITED Easting: 504250 Northing: 184680	Annual Volume (m <sup>3</sup> ): 742500 Max Daily Volume (m <sup>3</sup> ): 2600 Original Application No: - Original Start Date: 26/10/2007 Expiry Date: 31/03/2014 Issue No: 1 Version Start Date: 26/10/2007 Version End Date: -





ID	Location	Details	
-	1523m N	Status: Active Licence No: TH/039/0028/035 Details: Mineral Washing Direct Source: THAMES GROUNDWATER Point: LAGOON AT NEW DENHAM QUARRY, BUCKINGHAMSHIRE Data Type: Point Name: SUMMERLEAZE LIMITED Easting: 504263 Northing: 184702	Annual Volume (m <sup>3</sup> ): 742500 Max Daily Volume (m <sup>3</sup> ): 2600 Original Application No: NPS/WR/012708 Original Start Date: 01/04/2014 Expiry Date: 31/03/2026 Issue No: 1 Version Start Date: 01/04/2014 Version End Date: -
-	1693m N	Status: Historical Licence No: 28/39/28/0132 Details: Spray Irrigation - Spray Irrigation Definition Order Direct Source: THAMES GROUNDWATER Point: WELL 'C' AT NEW DENHAM Data Type: Point Name: B T SMITH & SON Easting: 504400 Northing: 184900	Annual Volume (m <sup>3</sup> ): - Max Daily Volume (m <sup>3</sup> ): - Original Application No: - Original Start Date: 05/09/1966 Expiry Date: - Issue No: 100 Version Start Date: 10/12/1993 Version End Date: -
-	1693m N	Status: Historical Licence No: 28/39/28/0132 Details: Spray Irrigation - Direct Direct Source: THAMES GROUNDWATER Point: WELL 'C' AT NEW DENHAM Data Type: Point Name: B T SMITH & SON Easting: 504400 Northing: 184900	Annual Volume (m <sup>3</sup> ): - Max Daily Volume (m <sup>3</sup> ): - Original Application No: - Original Start Date: 05/09/1966 Expiry Date: - Issue No: 100 Version Start Date: 10/12/1993 Version End Date: -
-	1697m N	Status: Historical Licence No: 28/39/28/0132 Details: Spray Irrigation - Direct Direct Source: THAMES GROUNDWATER Point: SMITHS NURSERIES, DENHAM- WELL C Data Type: Point Name: SMITHS NURSERIES LIMITED Easting: 504460 Northing: 184910	Annual Volume (m <sup>3</sup> ): 9819 Max Daily Volume (m <sup>3</sup> ): 54.60 Original Application No: - Original Start Date: 05/09/1966 Expiry Date: - Issue No: 102 Version Start Date: 22/08/2019 Version End Date: -
-	1697m N	Status: Historical Licence No: 28/39/28/0132 Details: Spray Irrigation - Spray Irrigation Definition Order Direct Source: THAMES GROUNDWATER Point: SMITHS NURSERIES, DENHAM- WELL C Data Type: Point Name: SMITHS NURSERIES LIMITED Easting: 504460 Northing: 184910	Annual Volume (m <sup>3</sup> ): 9819 Max Daily Volume (m <sup>3</sup> ): 54.60 Original Application No: - Original Start Date: 05/09/1966 Expiry Date: - Issue No: 102 Version Start Date: 22/08/2019 Version End Date: -



ID	Location	Details	
-	1881m N	Status: Historical Licence No: 28/39/28/0132 Details: Spray Irrigation - Direct Direct Source: THAMES GROUNDWATER Point: WELL 'A' AT NEW DENHAM Data Type: Point Name: B T SMITH & SON Easting: 504700 Northing: 185100	Annual Volume (m <sup>3</sup> ): - Max Daily Volume (m <sup>3</sup> ): - Original Application No: - Original Start Date: 05/09/1966 Expiry Date: - Issue No: 100 Version Start Date: 10/12/1993 Version End Date: -
-	1881m N	Status: Historical Licence No: 28/39/28/0132 Details: Spray Irrigation - Spray Irrigation Definition Order Direct Source: THAMES GROUNDWATER Point: WELL 'A' AT NEW DENHAM Data Type: Point Name: B T SMITH & SON Easting: 504700 Northing: 185100	Annual Volume (m <sup>3</sup> ): - Max Daily Volume (m <sup>3</sup> ): - Original Application No: - Original Start Date: 05/09/1966 Expiry Date: - Issue No: 100 Version Start Date: 10/12/1993 Version End Date: -
-	1883m N	Status: Historical Licence No: 28/39/28/0132 Details: Spray Irrigation - Direct Direct Source: THAMES GROUNDWATER Point: WELL 'B' AT NEW DENHAM Data Type: Point Name: B T SMITH & SON Easting: 504500 Northing: 185100	Annual Volume (m <sup>3</sup> ): - Max Daily Volume (m <sup>3</sup> ): - Original Application No: - Original Start Date: 05/09/1966 Expiry Date: - Issue No: 100 Version Start Date: 10/12/1993 Version End Date: -
-	1883m N	Status: Historical Licence No: 28/39/28/0132 Details: Spray Irrigation - Spray Irrigation Definition Order Direct Source: THAMES GROUNDWATER Point: WELL 'B' AT NEW DENHAM Data Type: Point Name: B T SMITH & SON Easting: 504500 Northing: 185100	Annual Volume (m <sup>3</sup> ): - Max Daily Volume (m <sup>3</sup> ): - Original Application No: - Original Start Date: 05/09/1966 Expiry Date: - Issue No: 100 Version Start Date: 10/12/1993 Version End Date: -
-	1902m N	Status: Active Licence No: 28/39/28/0132 Details: Spray Irrigation - Direct Direct Source: THAMES GROUNDWATER Point: SMITHS NURSERIES, DENHAM- WELL B Data Type: Point Name: SMITHS NURSERIES LIMITED Easting: 504520 Northing: 185120	Annual Volume (m <sup>3</sup> ): 9819 Max Daily Volume (m <sup>3</sup> ): 55 Original Application No: NPS/WR/032699 Original Start Date: 05/09/1966 Expiry Date: - Issue No: 103 Version Start Date: 16/03/2020 Version End Date: -



ID	Location	Details	
-	1902m N	Status: Active Licence No: 28/39/28/0132 Details: Trickle Irrigation - Direct Direct Source: THAMES GROUNDWATER Point: SMITHS NURSERIES, DENHAM- WELL B Data Type: Point Name: SMITHS NURSERIES LIMITED Easting: 504520 Northing: 185120	Annual Volume (m <sup>3</sup> ): 9819 Max Daily Volume (m <sup>3</sup> ): 55 Original Application No: NPS/WR/032699 Original Start Date: 05/09/1966 Expiry Date: - Issue No: 103 Version Start Date: 16/03/2020 Version End Date: -
-	1902m N	Status: Historical Licence No: 28/39/28/0132 Details: Spray Irrigation - Spray Irrigation Definition Order Direct Source: THAMES GROUNDWATER Point: SMITHS NURSERIES, DENHAM- WELL B Data Type: Point Name: SMITHS NURSERIES LIMITED Easting: 504520 Northing: 185120	Annual Volume (m <sup>3</sup> ): 9819 Max Daily Volume (m <sup>3</sup> ): 54.60 Original Application No: - Original Start Date: 05/09/1966 Expiry Date: - Issue No: 102 Version Start Date: 22/08/2019 Version End Date: -
-	1932m N	Status: Historical Licence No: 28/39/28/0132 Details: Spray Irrigation - Direct Direct Source: THAMES GROUNDWATER Point: SMITHS NURSERIES, DENHAM- WELL A Data Type: Point Name: SMITHS NURSERIES LIMITED Easting: 504720 Northing: 185150	Annual Volume (m <sup>3</sup> ): 9819 Max Daily Volume (m <sup>3</sup> ): 54.60 Original Application No: - Original Start Date: 05/09/1966 Expiry Date: - Issue No: 102 Version Start Date: 22/08/2019 Version End Date: -
-	1932m N	Status: Historical Licence No: 28/39/28/0132 Details: Spray Irrigation - Spray Irrigation Definition Order Direct Source: THAMES GROUNDWATER Point: SMITHS NURSERIES, DENHAM- WELL A Data Type: Point Name: SMITHS NURSERIES LIMITED Easting: 504720 Northing: 185150	Annual Volume (m <sup>3</sup> ): 9819 Max Daily Volume (m <sup>3</sup> ): 54.60 Original Application No: - Original Start Date: 05/09/1966 Expiry Date: - Issue No: 102 Version Start Date: 22/08/2019 Version End Date: -
-	1941m SW	Status: Active Licence No: 28/39/28/0105 Details: Spray Irrigation - Direct Direct Source: THAMES GROUNDWATER Point: BOREHOLE AT IVER, BUCKS Data Type: Point Name: IVER FLOWERLAND LIMITED Easting: 502901 Northing: 182199	Annual Volume (m <sup>3</sup> ): 16000 Max Daily Volume (m <sup>3</sup> ): 546 Original Application No: NPS/WR/026726 Original Start Date: 13/06/1966 Expiry Date: - Issue No: 103 Version Start Date: 06/03/2019 Version End Date: -



ID	Location	Details	
-	1941m SW	Status: Historical Licence No: 28/39/28/0105 Details: Spray Irrigation - Direct Direct Source: THAMES GROUNDWATER Point: BOREHOLE AT IVER, BUCKS Data Type: Point Name: IVER FLOWERLAND LIMITED Easting: 502900 Northing: 182200	Annual Volume (m <sup>3</sup> ): 5455 Max Daily Volume (m <sup>3</sup> ): 545.5 Original Application No: - Original Start Date: 13/06/1966 Expiry Date: - Issue No: 101 Version Start Date: 29/02/2000 Version End Date: -
-	1987m N	Status: Historical Licence No: 28/39/28/0010 Details: General Washing/Process Washing Direct Source: THAMES GROUNDWATER Point: BOREHOLE A AT 100 ACRES, DENHAM, BUCKS. Data Type: Point Name: HARBOUR PROPERTIES LIMITED Easting: 505350 Northing: 185070	Annual Volume (m <sup>3</sup> ): - Max Daily Volume (m <sup>3</sup> ): - Original Application No: - Original Start Date: 08/11/1965 Expiry Date: - Issue No: 101 Version Start Date: 01/01/2002 Version End Date: -
-	1987m N	Status: Historical Licence No: 28/39/28/0010 Details: General Washing/Process Washing Direct Source: THAMES GROUNDWATER Point: 100 ACRES, DENHAM, BUCKS- BOREHOLE A Data Type: Point Name: ARLINGTON BUSINESS PARKS GP LTD Easting: 505350 Northing: 185070	Annual Volume (m <sup>3</sup> ): 454600 Max Daily Volume (m <sup>3</sup> ): 1637 Original Application No: - Original Start Date: 08/11/1965 Expiry Date: - Issue No: 102 Version Start Date: 08/09/2003 Version End Date: -

*This data is sourced from the Environment Agency and Natural Resources Wales.*

## 5.7 Surface water abstractions

### Records within 2000m

3

Licensed surface water abstractions for sites extracting more than 20 cubic metres of water a day and includes active and historical records. The data may be for a single abstraction point, a stretch of watercourse or a larger area.

Features are displayed on the Abstractions and Source Protection Zones map on [page 78 >](#)



ID	Location	Details	
3	565m NW	Status: Historical Licence No: 28/39/28/0079 Details: Spray Irrigation - Direct Direct Source: THAMES SURFACE WATER - NON TIDAL Point: REACH C-D ON RIVER ALDERBOURNE AT MANSFIELD FARM, IVER HEATH Data Type: Line Name: JONES Easting: 504100 Northing: 183500	Annual Volume (m <sup>3</sup> ): 6819 Max Daily Volume (m <sup>3</sup> ): 205 Original Application No: - Original Start Date: 04/04/1966 Expiry Date: - Issue No: 100 Version Start Date: 25/06/1986 Version End Date: -
-	972m NW	Status: Historical Licence No: 28/39/28/0079 Details: Spray Irrigation - Direct Direct Source: THAMES SURFACE WATER - NON TIDAL Point: REACH A-B ON RIVER ALDERBOURNE AT MANSFIELD FARM, IVER HEATH Data Type: Line Name: JONES Easting: 504000 Northing: 184200	Annual Volume (m <sup>3</sup> ): 6819 Max Daily Volume (m <sup>3</sup> ): 205 Original Application No: - Original Start Date: 04/04/1966 Expiry Date: - Issue No: 100 Version Start Date: 25/06/1986 Version End Date: -
-	1570m S	Status: Historical Licence No: 28/39/28/0495 Details: Hydroelectric Power Generation Direct Source: THAMES SURFACE WATER - NON TIDAL Point: RIVER COLNE AT HUNTSMOOR WEIR, COWLEY, MIDDLESEX Data Type: Point Name: RIGBY Easting: 504870 Northing: 181570	Annual Volume (m <sup>3</sup> ): 21503232 Max Daily Volume (m <sup>3</sup> ): 58752 Original Application No: - Original Start Date: 01/04/1991 Expiry Date: - Issue No: 100 Version Start Date: 01/04/1991 Version End Date: -

*This data is sourced from the Environment Agency and Natural Resources Wales.*

## 5.8 Potable abstractions

<b>Records within 2000m</b>	<b>0</b>
-----------------------------	----------

Licensed potable water abstractions for sites extracting more than 20 cubic metres of water a day and includes active and historical records. The data may be for a single abstraction point, a stretch of watercourse or a larger area.

*This data is sourced from the Environment Agency and Natural Resources Wales.*





## 5.9 Source Protection Zones

Records within 500m

0

Source Protection Zones define the sensitivity of an area around a potable abstraction site to contamination.

*This data is sourced from the Environment Agency and Natural Resources Wales.*

## 5.10 Source Protection Zones (confined aquifer)

Records within 500m

0

Source Protection Zones in the confined aquifer define the sensitivity around a deep groundwater abstraction to contamination. A confined aquifer would normally be protected from contamination by overlying geology and is only considered a sensitive resource if deep excavation/drilling is taking place.

*This data is sourced from the Environment Agency and Natural Resources Wales.*

