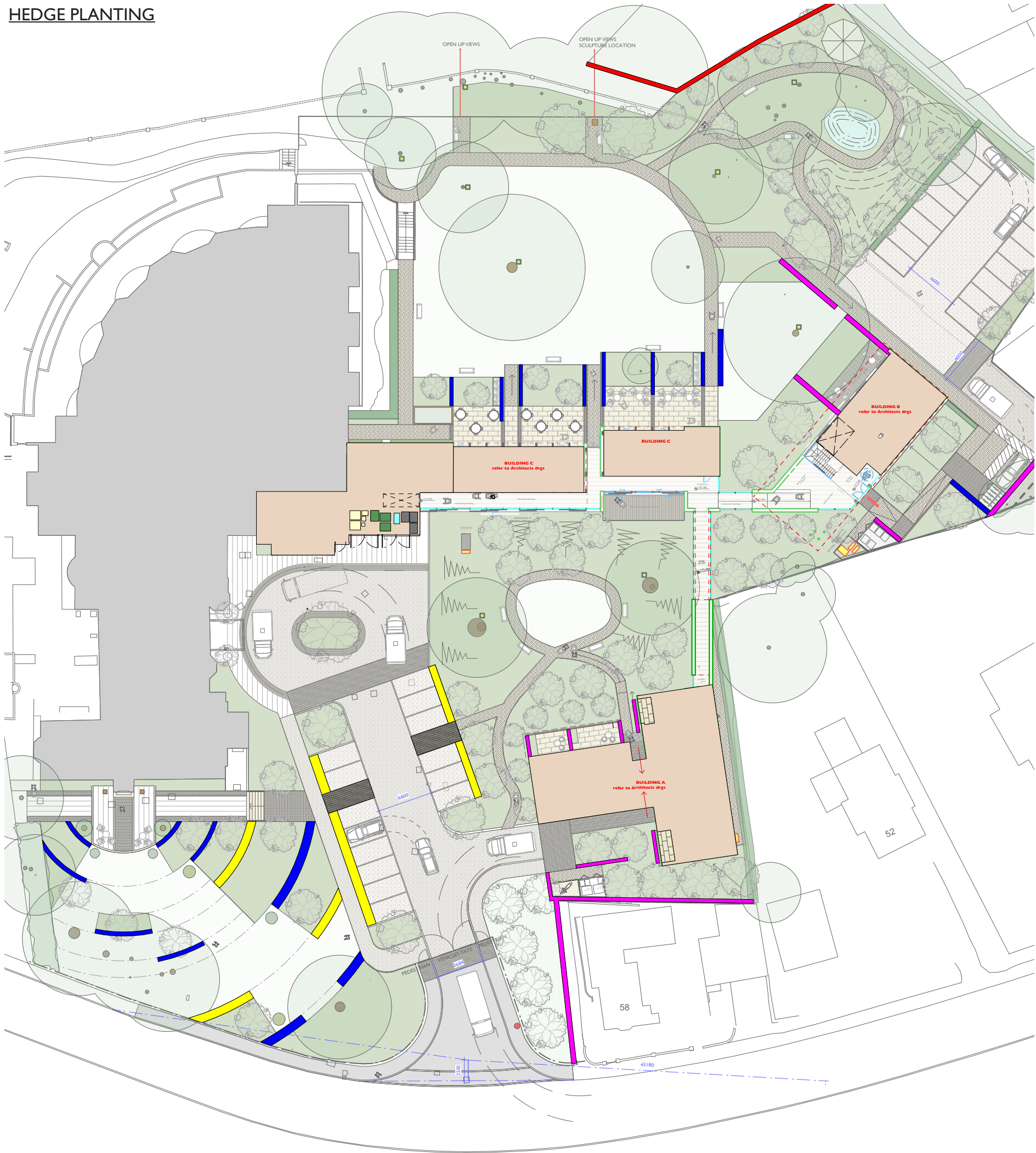


HEDGE PLANTING



TAXUS BACCATA- 70CM HT X 40CM DEPTH



OSMANTHUS BURKWOODII- 150CM HT X 40CM DEPTH



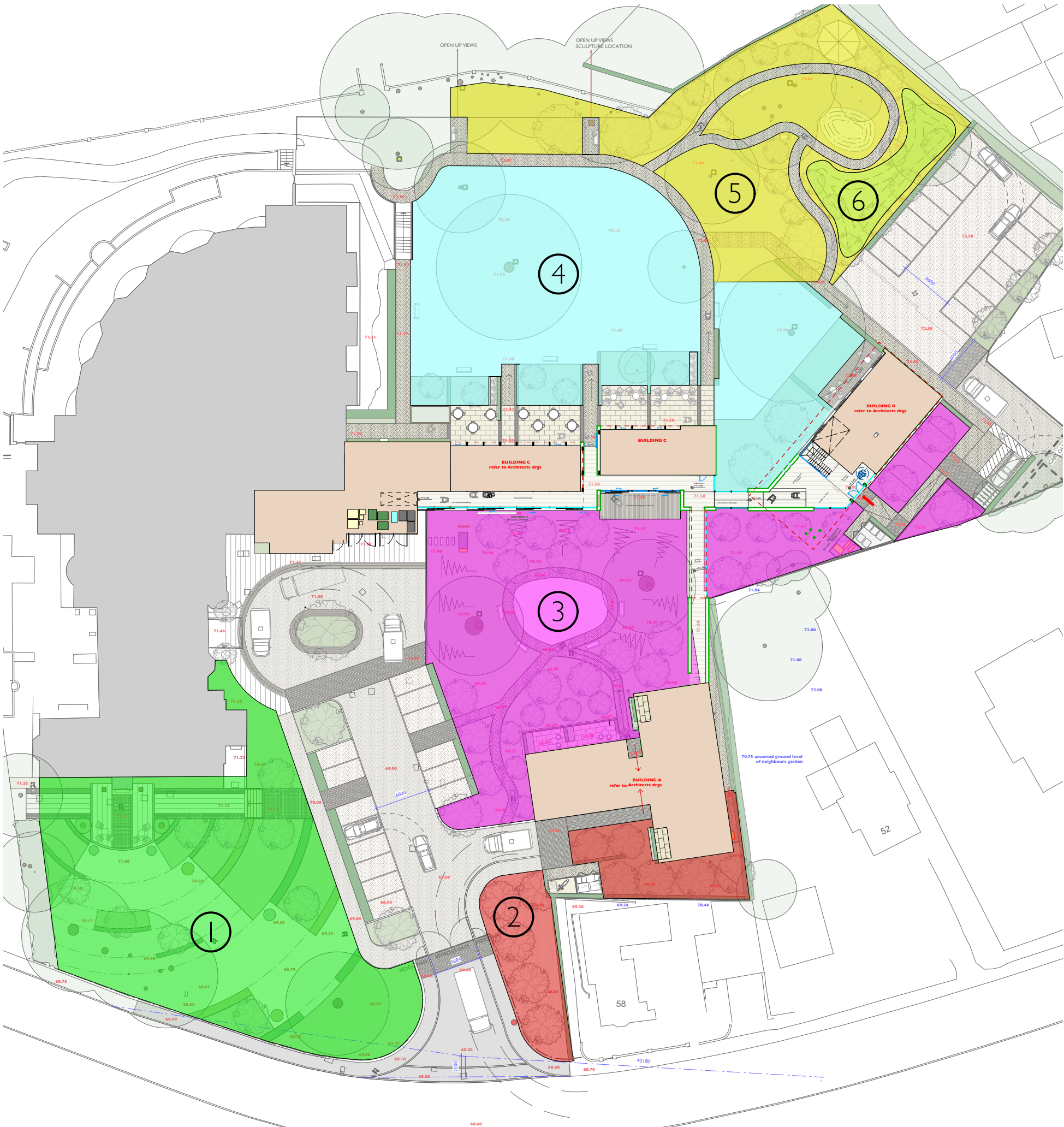
FAGUS SYLVATICA - 120CM HT X 60-80CM DEPTH



MIXED NATIVE HEDGE- 2M HT X 50CM DEPTH



PLANTING STRATEGY



- ① Formal Lawn and Ornamental planting to Grade II Historical facade of Denville Hall
- ② Buffer Zone of planting around Grade II listed cottage, with Prunus Avium trees to soften proposed building A
- ③ Redwood Garden- Appropriate additional tree planting and understory to Majestic Redwoods to open up and enhance these trees, enabling close up viewing of the trunks, and a small central lawn, with seating around the path
- ④ Cafe Garden and Monterey Pine lawn Ornamental planting and yew hedges
- ⑤ Woodland Walk Existing and newly planted trees will allow for an attractive woodland understory of planting with a wildlife pond and wheelchair friendly paths to navigate around the perimeter. A gazebo to provide shelter from the rain.
- ⑥ Wildflower mound Recycled excavated soil from the site will be used to provide a sloped mound, that will also help hide the carpark. This will then be seeded with Wildflowers.



PLANTING STRATEGY

1

Formal Lawn and Ornamental planting
to Grade II Historical facade of Denville Hall



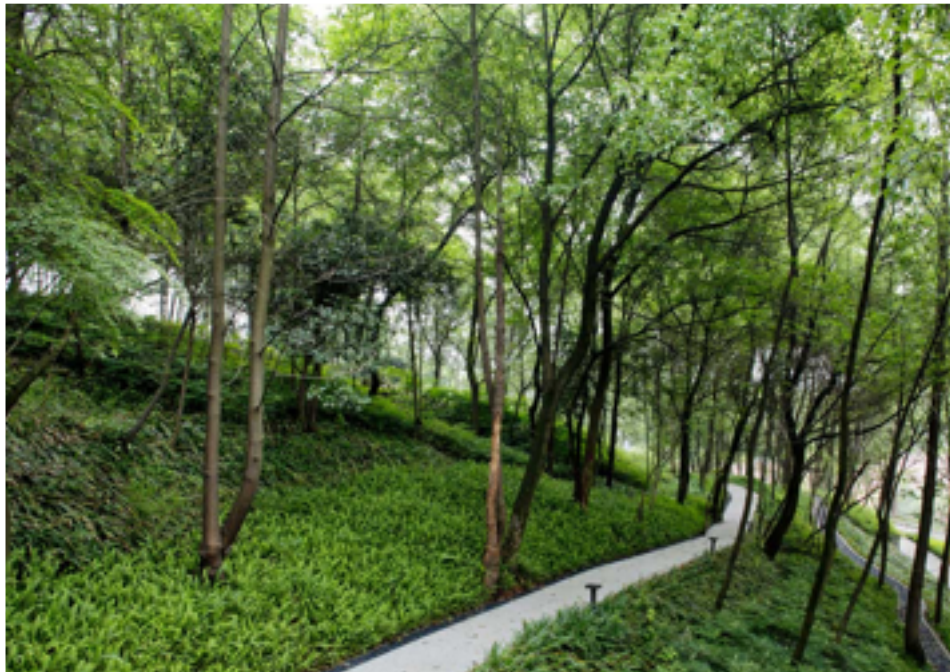
2

Buffer Zone of planting around Grade II
listed cottage and driveway entrance



3

Redwood Garden



PLANTING STRATEGY

4

Cafe Garden, Monterey Pine lawn,
ornamental planting and yew hedges



5

Woodland Walk

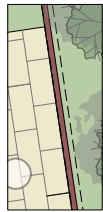
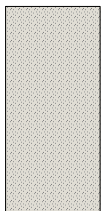
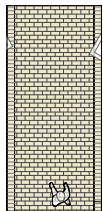
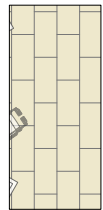


6

Wildflower mound and wildlife pond



LANDSCAPE MATERIALS PALETTE



20mm PAVING- CONTEMPORARY GREY SAWN SANDSTONE 600 BANDING
WIDTHS OR SCAPE/ TECH PORCELAIN TILES- COSMOPOLITAN RANGE
CMP 102/103- 600 X 1200mm TILE SIZE



CHELMER VALLEY PAVERS- ALPHA RANGE
200 x 48 x 58mm- STONE GREY/ ALDRIDGE

