



## ARCHITECTURE + PLANNING

61 COPSE WOOD WAY, NORTHWOOD, MIDDLESEX, HA6 2TZ

(Permitted under 8933/APP/2025/1414)

APRIL 2026

### CONDITION 4. MATERIALS

Roof Tiles: Dreadnought Clay Tile (Rustic Country Brown).

Facing Brick: Michelmersh (Freshfield Lane, First Quality Multi).

Stone: Portland.

Dormer Cheeks: Lead (Grey).

Front Door – Timber (Dark Grey).

Windows and Doors – Aluminium Frame (Dark Grey).

Fascia Boards and Soffits – Extruded Aluminium (Dark Grey).

Secondary Fascia – GRP (colour to match stone colour).

Rainwater Pipes and Gutters – Aluminium (Dark Grey).

Paths and Patios – Porcelain Paving Slab (Mid / Light Grey).

Driveway – Permeable Resin Bound Gravel (Light Grey).

**Proposed roof tile, facing brick, driveway and paving images provided over leaf.**

## **MATERIALS SAMPLE IMAGES**

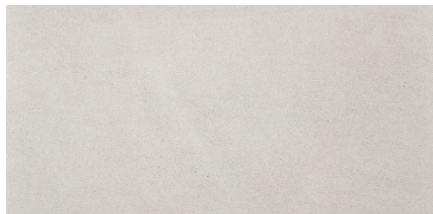
Roof Tiles: Dreadnought Clay Tile (Rustic Country Brown).



Facing Brick: Michelmersh (Freshfield Lane, First Quality Multi).



Stone: Portland.



Driveway: Permeable Resin Bound Gravel (Light Grey).



Paths and Patios: Porcelain Paving Slabs (Mid /Light Grey Mix).

