



01 DETAILED ELEVATION 1 - ENTRANCE
1 : 50

02 SECTION D-D'
1 : 50

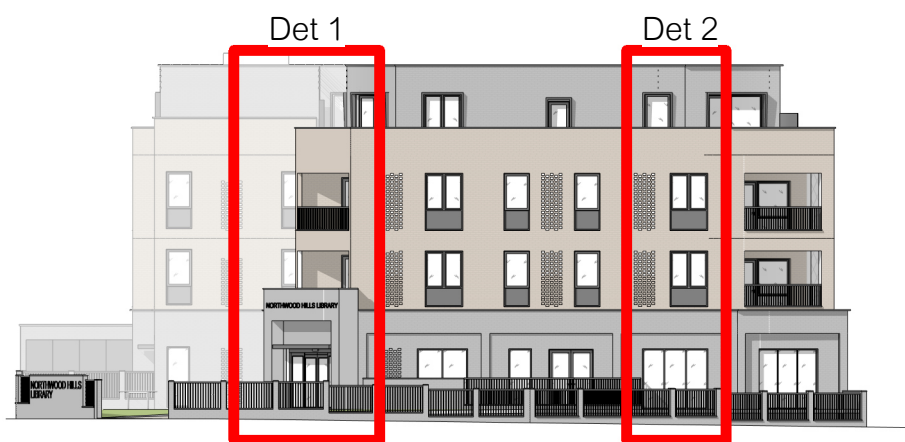


03 DETAILED ELEVATION 2 - PINNER ROAD
1 : 50

04 SECTION E-E'
1 : 50



05 Location Plan
1 : 1250



MATERIAL KEY

- 1 Stretcher bond facing brick.
Colour: Cream
- 2 Stretcher bond facing brick.
Colour: Grey
- 3 Reconstituted stone coping
- 4 PPC steel balustrade
- 5 Aluminium framed windows and
doors. Colour: Dark Grey
- 6 Projecting entrance canopy - PPC
aluminium fascia. Colour: Grey
- 7 Recessed feature brick detail
- 8 Projecting window/ door surround -
PPC Aluminium. Colour: Grey



drawing title:
M10047- HUN- APL020

DETAILED PART ELEVATIONS

status code: **PLANNING**

reason for issue:

revision: **A** date: **AUGUST 2023**

Issued for Planning

Northwood Hills Library

Potter Street
Northwood HA6 1QQ

hunters project number: M10047 client project number: EC drawn by: JW checked by: As @ A1 scale: indicated

All drawings are to be printed
in colour.

Use figured dimensions only. All
levels and dimensions to be
checked on site. This drawing is
to be read in conjunction with all
other relevant drawings and
specifications. Hunters is a trading
name of Hunter & Partners Limited.
© Hunter & Partners Limited. All
rights reserved.

Space One Beadon Road
London W6 0EA
T 020 8237 8200
mail@hunters.co.uk
www.hunters.co.uk

revised by: JW

model ref: C:\Revit Local\M10047 Northwood Hills Library.j_camelio.rvt