

FLAT ROOF LIGHT
VELUX or similar
slim line aluminium
roof light

To be double glazed + to meet 'U' value of
min. 2.0W/m sq.K. All roof lights to be A-A
fire rated.

Fully thermally broken construction.

Double up rafters on the side of opening,
supporting double trimmers above & below
opening.
Bolt together with M12 bolts at 450 c/s.

Fixed in accordance with the
manufacturers instructions.



Slim line frame
for pitched roof.
Reset within roof tiles.
Can be fixed to roof pitch
as low as 12 deg. & as
high as 90 deg.

ROOF LIGHTS on pitch roof

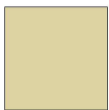
Rooflights to be double glazed + to meet
'U' value of min. 2.0 W/m sq.K.
All roof lights to be A-A fire rated.

Double up rafters on the side of opening,
supporting double trimmers above
& below opening. Bolt together with M12
bolts at 450 c/s.

Must be 450mm minimum clear opening
with non opening fasteners.



New ground floor roof



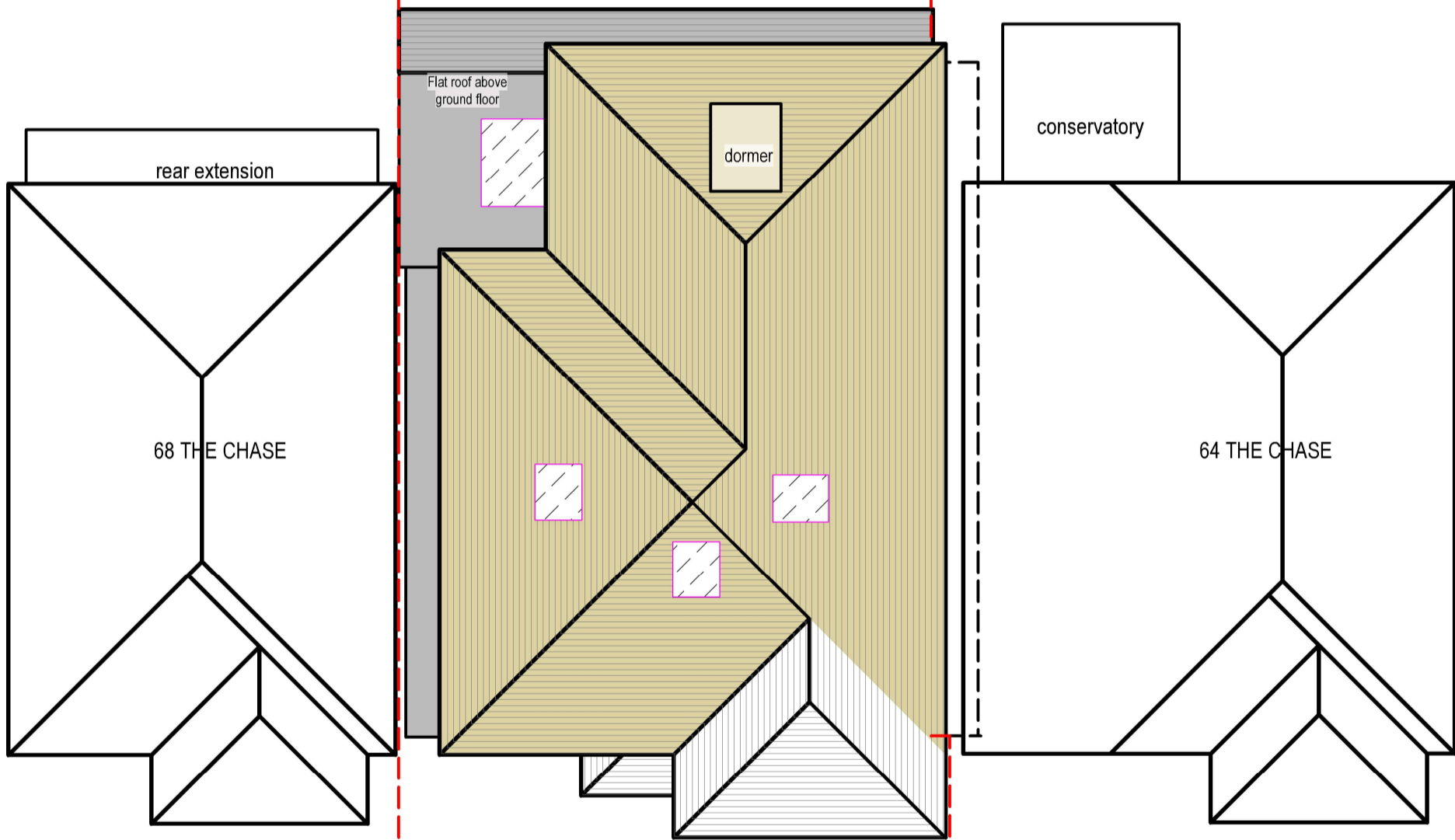
New first floor roof



New dormer roof



Rooflight

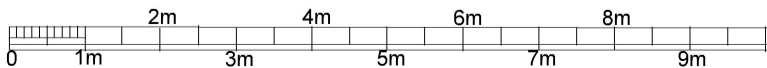


14

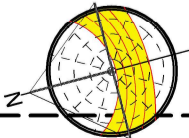
PROP ROOF PLAN
Scale: 1:100



tel : 0796 222 3141
email : sandeep@sskarchitects.co.uk



scale - 1 : 100 @ A3



PROPOSED

Purpose - Householder planning application

© SSK architects owns the copyright of this drawing which must not be reproduced in whole or part without the written permission.	PROJECT: 66 The Chase, Pinner, HA5 1SN		DATE: 24/02/2025
	DWG NO: PROP ROOF		REVISION:
	14		