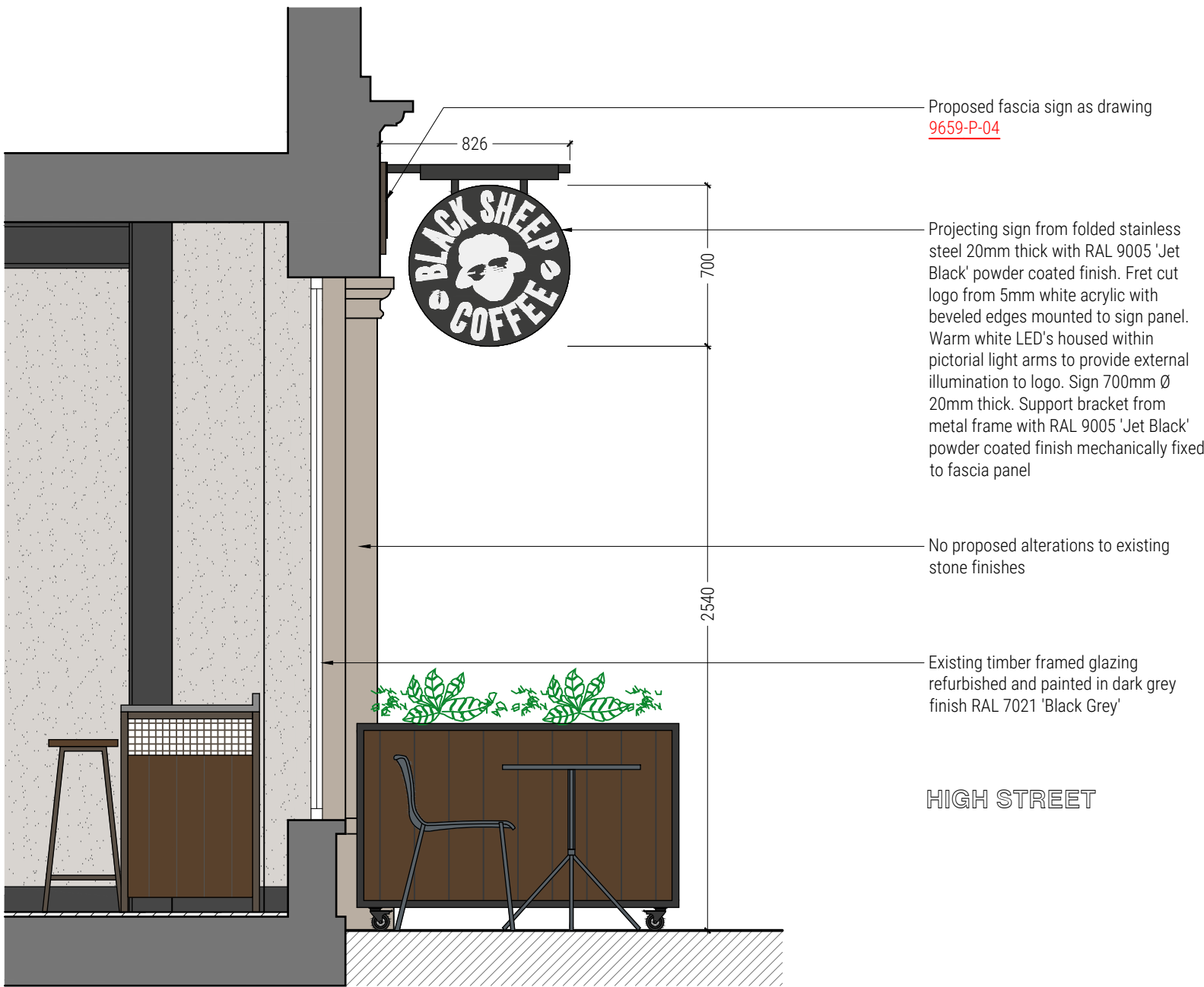


DO NOT SCALE FROM THIS DRAWING. THE AUTHOR OF THIS DRAWING TAKES NO RESPONSIBILITY FOR ANY DIMENSIONS OBTAINED BY MEASURING OR SCALING FROM THIS DRAWING AND NO RELIANCE MAY BE PLACED ON SUCH DIMENSIONS. ALL DIMENSIONS MUST BE CHECKED AND VERIFIED ON SITE BY THE CONTRACTOR BEFORE COMMENCING ANY WORK OR PRODUCING DRAWINGS. RML ARCHITECTURE MUST BE NOTIFIED IMMEDIATELY OF ANY ERRORS OR DISCREPANCIES PRIOR TO THE COMMENCEMENT OF WORK.

THIS DRAWING IS TO BE READ IN CONJUNCTION WITH ALL OTHER RELEVANT CONTRACT DRAWINGS, SCHEDULES AND SPECIFICATIONS.

THIS DRAWING AND ALL INFORMATION CONTAINED WITHIN IS THE SOLE PROPERTY OF RML ARCHITECTURE LTD AND MAY NOT BE REPRODUCED IN WHOLE OR PART WITHOUT WRITTEN PERMISSION FROM RML ARCHITECTURE LTD.

REV	DESCRIPTION	DATE	BY
-	-	-	-



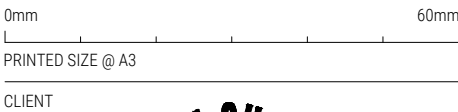
Proposed fascia sign as drawing
[9659-P-04](#)

Projecting sign from folded stainless steel 20mm thick with RAL 9005 'Jet Black' powder coated finish. Fret cut logo from 5mm white acrylic with beveled edges mounted to sign panel. Warm white LED's housed within pictorial light arms to provide external illumination to logo. Sign 700mm Ø 20mm thick. Support bracket from metal frame with RAL 9005 'Jet Black' powder coated finish mechanically fixed to fascia panel

No proposed alterations to existing stone finishes

Existing timber framed glazing refurbished and painted in dark grey finish RAL 7021 'Black Grey'

HIGH STREET



CLIENT



PROJECT
BLACK SHEEP COFFEE UXBRIDGE
25-26 HIGH STREET
UXBRIDGE
LONDON UB8 1JN

DRAWING TITLE
PROPOSED SECTION THROUGH
SHOPFRONT

PROJECT NUMBER	DATE
9659	FEB '23

SCALE	DRAWN BY
1:25 @ A3	EA

DRAWING NUMBER	REVISION
9659-P-05	-

DRAWING STATUS
APPROVAL

Section A: Typical Section Through Shop Front

Section location as noted on drawing 9659-P-04

