

MARSHALLS - PM62 MORTAR COLOUR
LIGHT BROWN, FLUSH BOND

C

Fuji Handmade, handmade texture, sanded, Caprice factory

MARSHALLS - PM62 MORTAR COLOUR
LIGHT GREY, FLUSH BOND

F

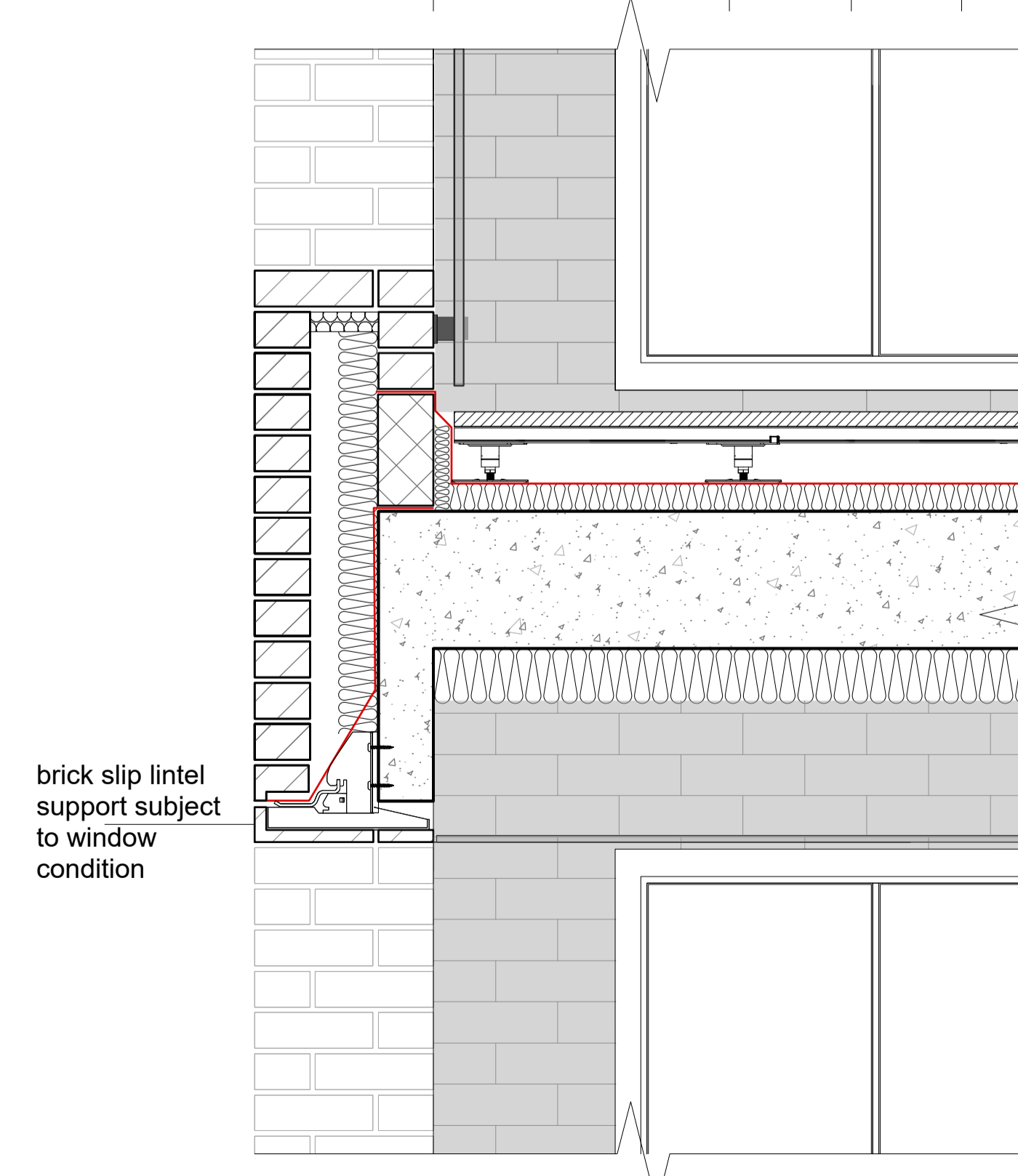
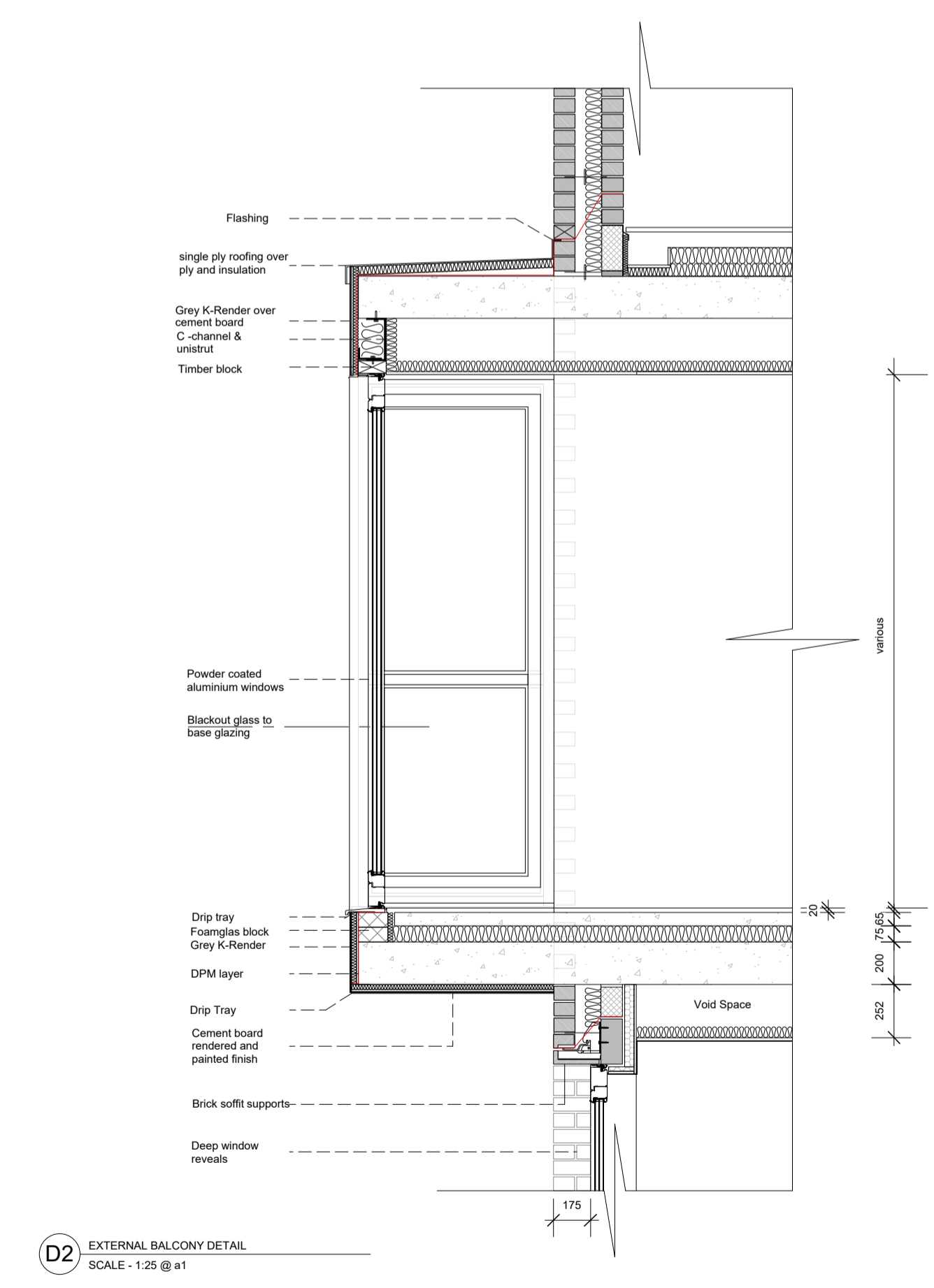
Marshalls, Marble Grey Facing Brick
(used for plinths, running courses and inner sides of recessed balconies)

A

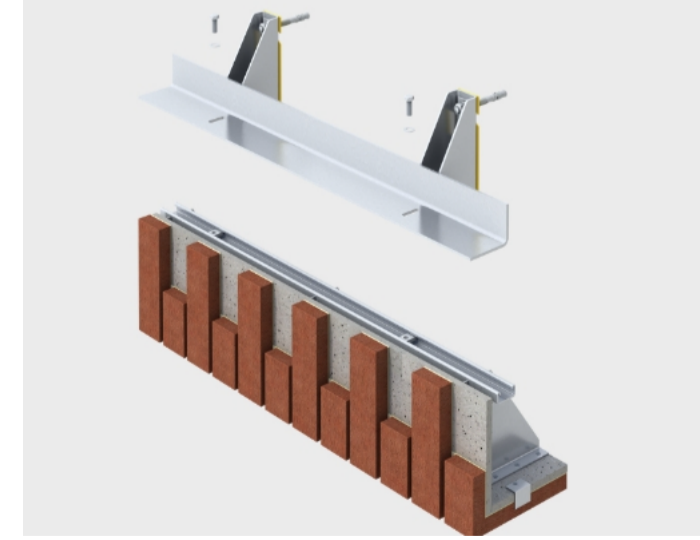
Standard
PIGMENTO® GREY

VMZinc, Standard Pigmento Grey standing seam
roofing/ panelling

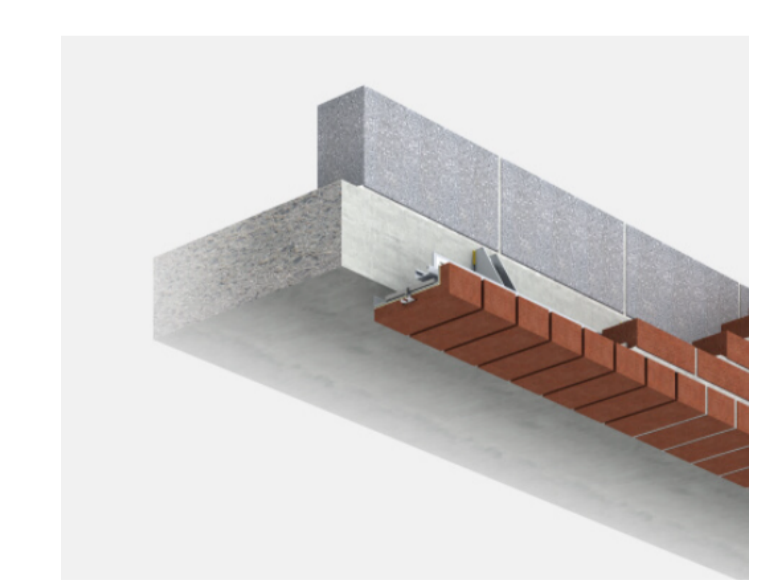
A - VMZinc Standard Pigmento Grey
B - Aluminium Coping
C - Fuji Handmade Brick
D - Black Painted steel balustrade
E - Fuji Handmade Brick - soldier Course
F - Marshalls marble grey facing brick
G - Blackout glazing to lower section for privacy
H - Aluminium powder coated windows, grey



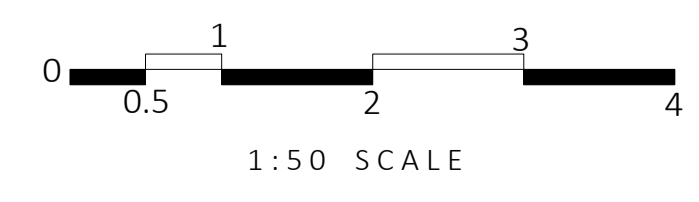
B.O.S.S. A1 is a lightweight, carbon neutral, pre-fabricated brick slip soffit system designed to be quickly and easily bolted to IG's Welded Masonry Support (WMS) to create spectacular brick soffits. This BBA certified unit is manufactured completely from A1 fire rated materials and is Document B:Fire Safety compliant.



B.O.S.S. is a lightweight, stainless steel, pre-fabricated brick slip soffit system designed to be quickly and easily bolted to IG's Welded Masonry Support (WMS) to create spectacular brick soffits.



IG Brick Slip Lintels are a lightweight, stainless steel, pre-fabricated brick slip unit designed for openings up to 3.6 metres. Manufactured off-site, the units are delivered to site complete with brick slips bonded to the stainless steel carrier unit.



CLEARING CONDITIONS
RIBA STAGE 4

All dimensions to be verified on site by contractors. Any discrepancies to be verified with the designer. No scaled dimensions to be used only figured dimensions. Copyright of HSD Contractors to work to CDM 2015 if applicable

HSD ARB RIBA

Project: STAR PUB DEVELOPMENT

Title: BALCONY DESIGN

SCALE	DRAWN:	REVISION	DATE
1:50 / 25/20 @ A1	H S SURI		
PG NO: BALCONY 01			