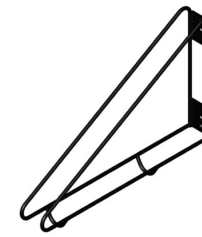
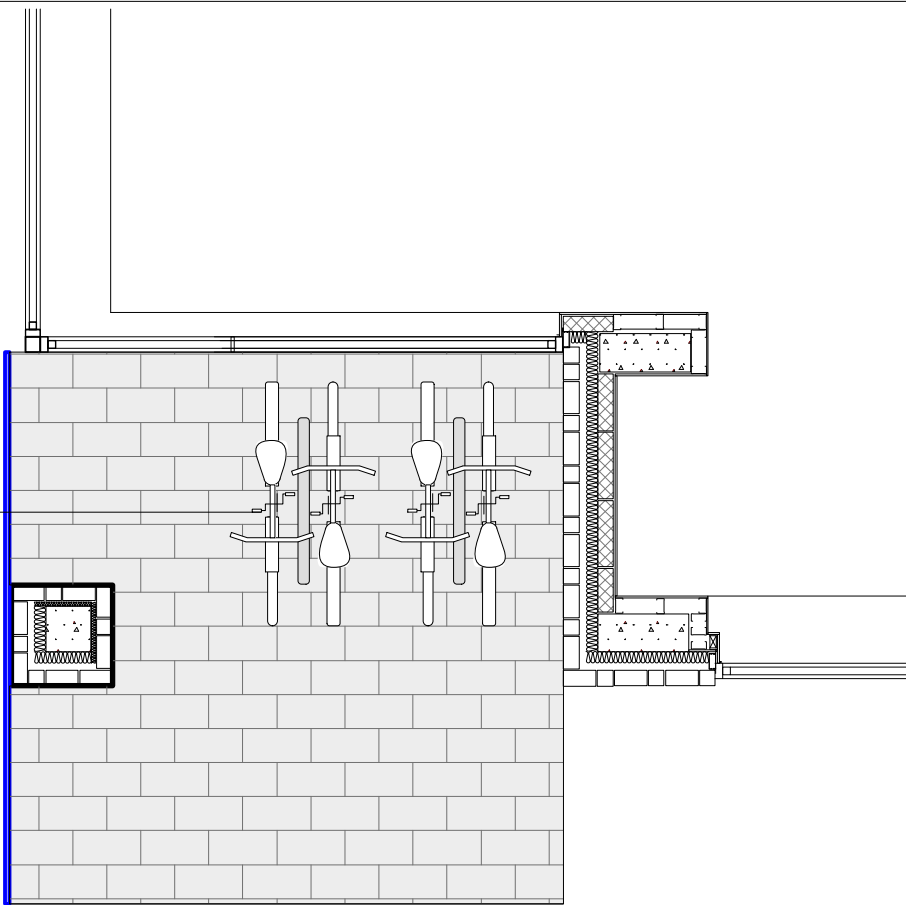


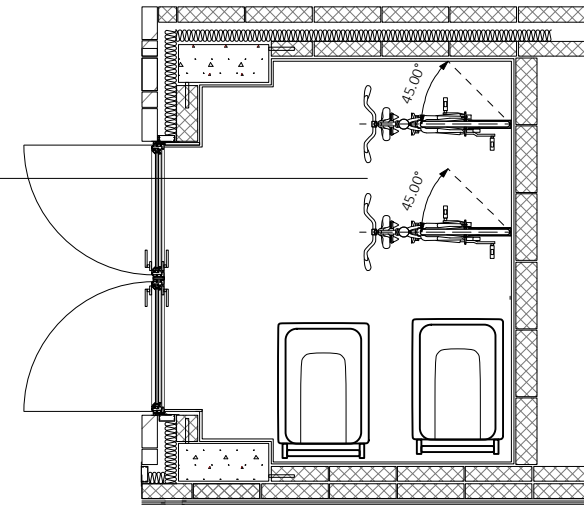
2nr Sheffield Cycle
Stand, black coated
Grout in bike stands

4nr bike spaces -
Commerical

ACO DRAIN

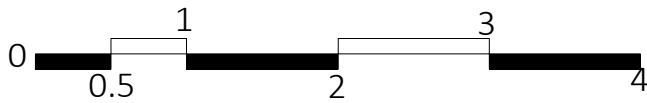


The Original WallRack
CycleSafe's Original WallRack™ was the first
vertically-hanging bike wall rack to effectively
store a bike in a simple, space saving, and
economical vertical bike storage rack.
Designed to free up floor space, The Original
WallRack™ parks a bike against a wall or
chain link fence to allow easy access and
locking of the bike wheel and frame.

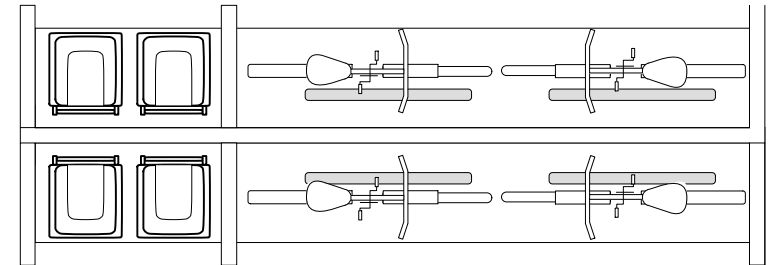


Total Cycle Stores
10nr - lockers
10nr - bikes to carpark
4nr - front commercial entrance
4nr - semi-detached properties
2nr - Commercial bin store

30nr total bikes on site

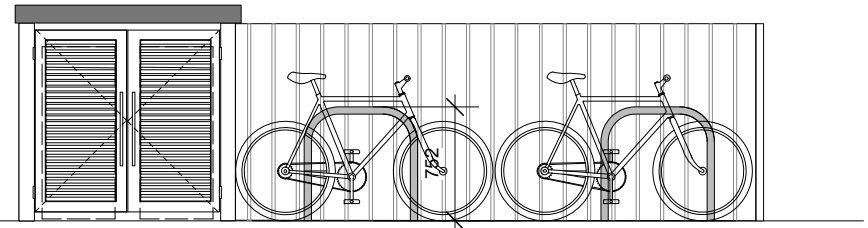


1 : 50 SCALE



4nr Sheffield Cycle
Stand, black coated
Grout in bike stands

4nr bike spaces -
Commerical



HSD			
ARB RIBA			
Project: STAR PUB DEVELOPMENT			
Title: CYCLE STORE			
SCALE	DRAWN:	REVISION	DATE
1:50	H S SURI		
@ A4	PG NO: DWG 03		