

Rev.	Amendment	24 Jul 2023
A	Rooflight added	

VOLUME CALCULATION

PROPOSED DORMER

1

$$\text{Vol} = \frac{2.72 \times 2.08}{2} \times 5.49 \times 2 = 44.20\text{m}^3$$

2

$$\text{Vol} = \left(\frac{0.5 \times 2.69 \times 2.69 \times 5.55}{3} \right) = 7.65\text{m}^3$$

3

$$\text{Vol} = \left(\frac{0.44 \times 0.62}{2} \right) \times (5.07 + 4.62) \times 2 = 2.22\text{m}^3$$

4

$$\text{Vol} = (0.44 + 0.44) \times 2 \times \frac{0.52}{3} = 0.13\text{m}^3$$

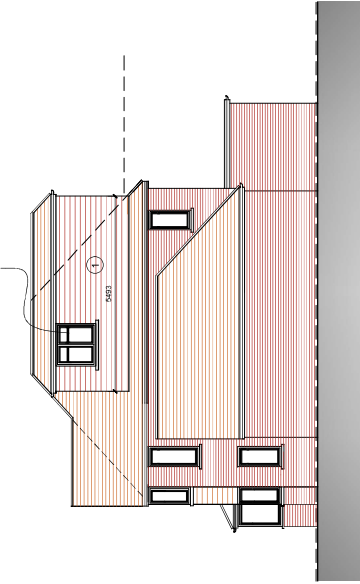
TOTAL VOLUME PROPOSED:

$$44.20 + 7.65 + 2.22 + 0.13 = 48.50\text{m}^3$$

LESS THAN THE 50m³ ALLOWED UNDER PERMITTED DEVELOPMENT FOR LOFT EXTENSIONS

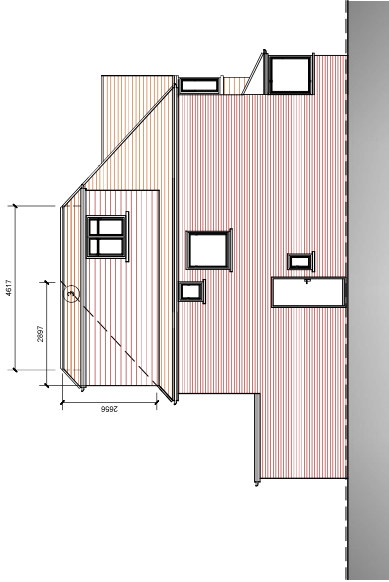
Any rooflights will not protrude more than 150mm beyond the plane of the slope of the original roof

Obscure glazed and non-opening window; the opening parts are more than 1.7m above the floor of the room

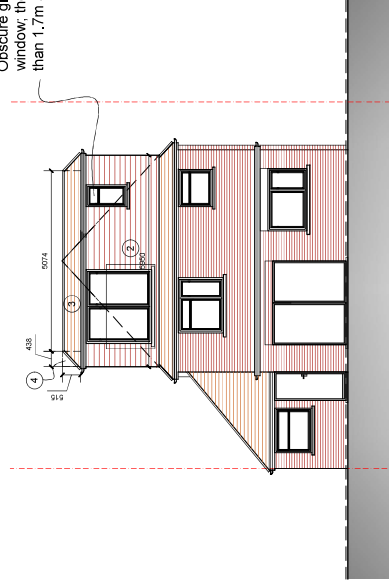


South West Elevation

South East Elevation



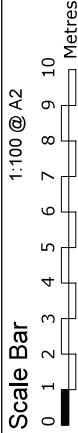
North West Elevation



North East Elevation

CALCULATIONS PROPOSED ELEVATIONS

42 Greenacres Avenue, Ickenham,
Middlesex, UB10 8HH



THE GILLETT MACLEOD PARTNERSHIP
Chartered Architects & Town Planning Consultants
1 High Road Old Eastcote Pinner Middlesex HA5 2EW Tel. 0208 868 1333

REVISION	Drawn by	Date	Scale	Dwg. No.
	KH	16/01/23	1:100	No.207/3478/27

REVIEW

C