

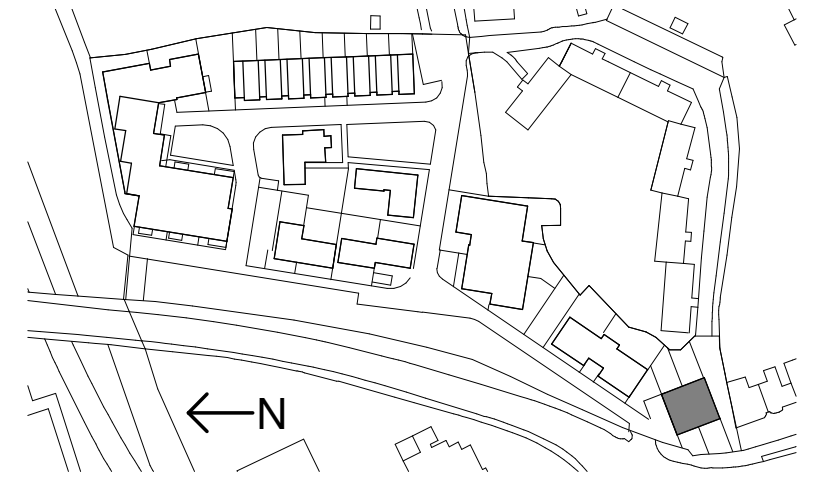
▼ BLOCK A - ROOF LEVEL

▼ BLOCK A - LEVEL 01

▼ BLOCK A - LEVEL 00



Block A East Elevation
SCALE: 1 : 100



▼ BLOCK A - ROOF LEVEL

▼ BLOCK A - LEVEL 01

▼ BLOCK A - LEVEL 00



Block A West Elevation
SCALE: 1 : 100

- B1 BRICKWORK - RED LIGHT
- B2 BRICKWORK - RED DARK
- B3 BRICKWORK - BUFF - LIGHT
- B4 BRICKWORK - BUFF - DARK
- B5 BRICKWORK - OFF WHITE
- SC BRICKWORK LAID IN VERTICAL STRETCHER BOND
- R1 COMPOSITE SHINGLES - DARK RED
- R2 ROOF TILES - DARK GREY
- M1 WINDOW FRAMES - DARK BRONZE
- M2 METAL DOOR FINISH - DARK BRONZE
- M3 METAL BALUSTRADE - DARK BRONZE
- M4 METAL CANOPY - DARK BRONZE
- M5 METAL COPING - DARK BRONZE
- M6 METAL DOOR FINISH - DARK BRONZE, LOUVRED
- F1 COMPOSITE PANELS - CHARCOAL
- F2 PRECAST PIGMENTED CONCRETE
- F3 DOOR PANEL - GLASS
- F4 OBSCURED GLASS
- F5 PAINTED FRONT DOOR



Aros Architects
Jerwood Space
171 Union Street
London SE1 0LN

Telephone
+44(0)20 7928 2444
Facsimile
+44(0)20 7928 2450

Email
info@arosarchitects.com
Website
www.arosarchitects.com

1. All dimensions are to be verified by the Contractor on site, any discrepancies in this drawing are to be reported to Aros Ltd.
2. The Contractor shall not vary any work shown on this drawing without prior approval in writing from Aros Ltd.
3. The Contractor shall supply a full set of shop drawings and specifications prior to commencement of work.
4. This drawing supersedes all previous issues of the same drawing number with an earlier revision suffix.
5. The Contractor shall immediately inform Aros Ltd of the effect upon the programme and costs of any alterations to the proposed works shown on this drawing.
6. This drawing is the copyright of Aros Ltd and the contents must not be disclosed to other parties without prior agreement.

Revisions

Rev	Date	Drawn	Issued to	Description
P01	01/04/2026	EPC	client	planning issue

Project
West End Road, Ruislip

Title
Block A Proposed Elevations Sheet 1

Project No
6490

Date
01/04/2026
16:15:06

Status
Planning

Drawing No
(20) 400

Scale
As indicated@
A3

Rev
P01