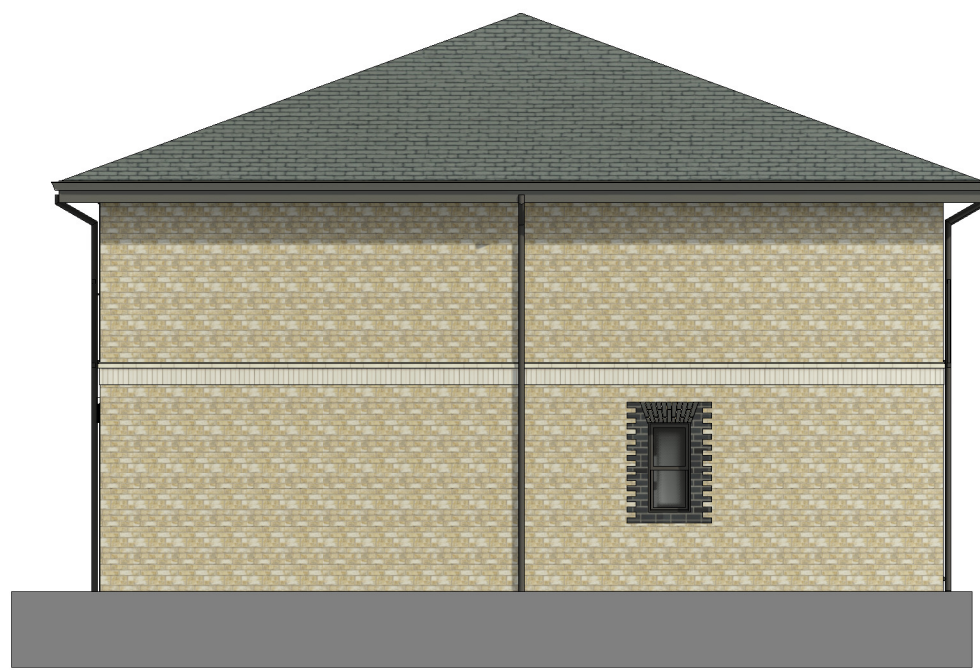
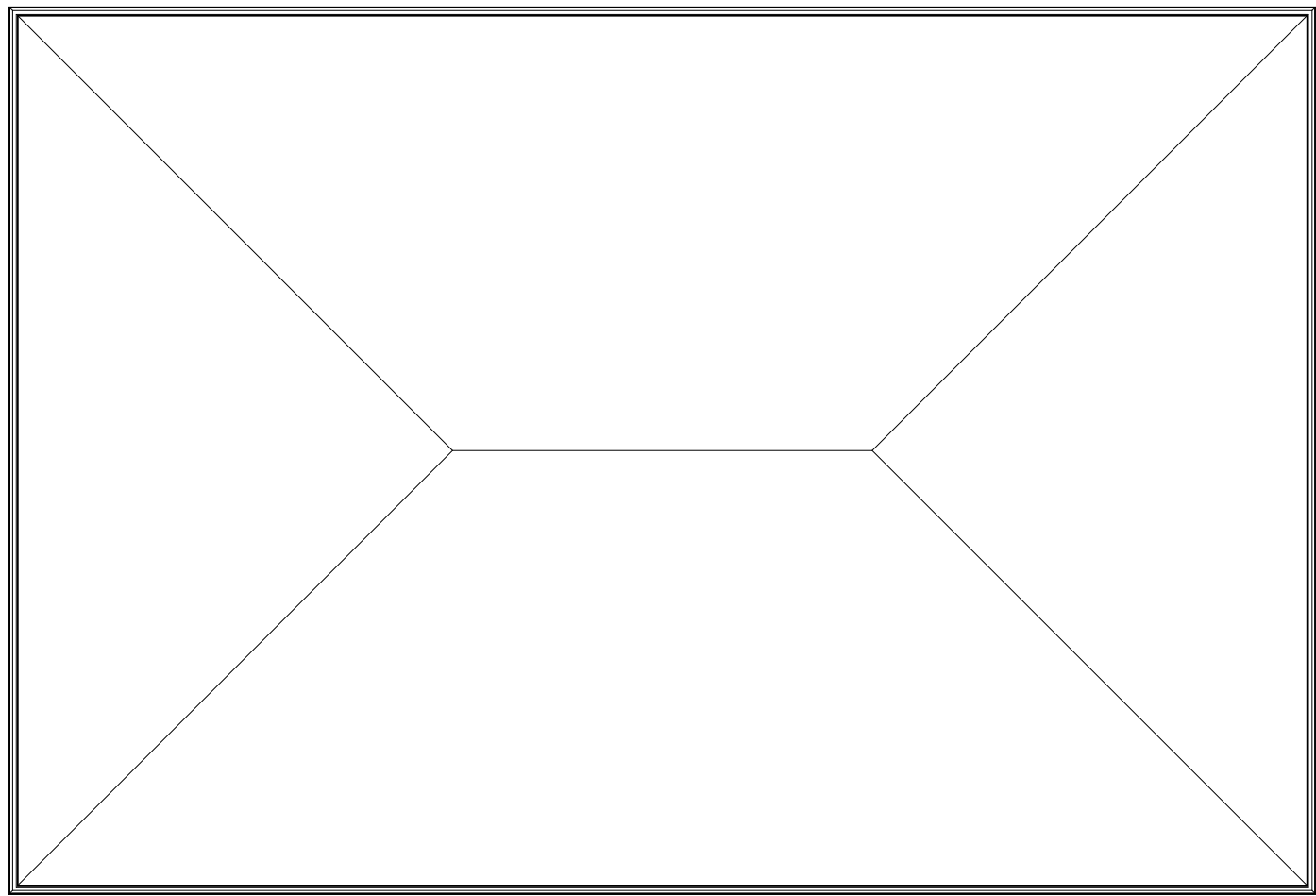




Front elevation
1 : 100



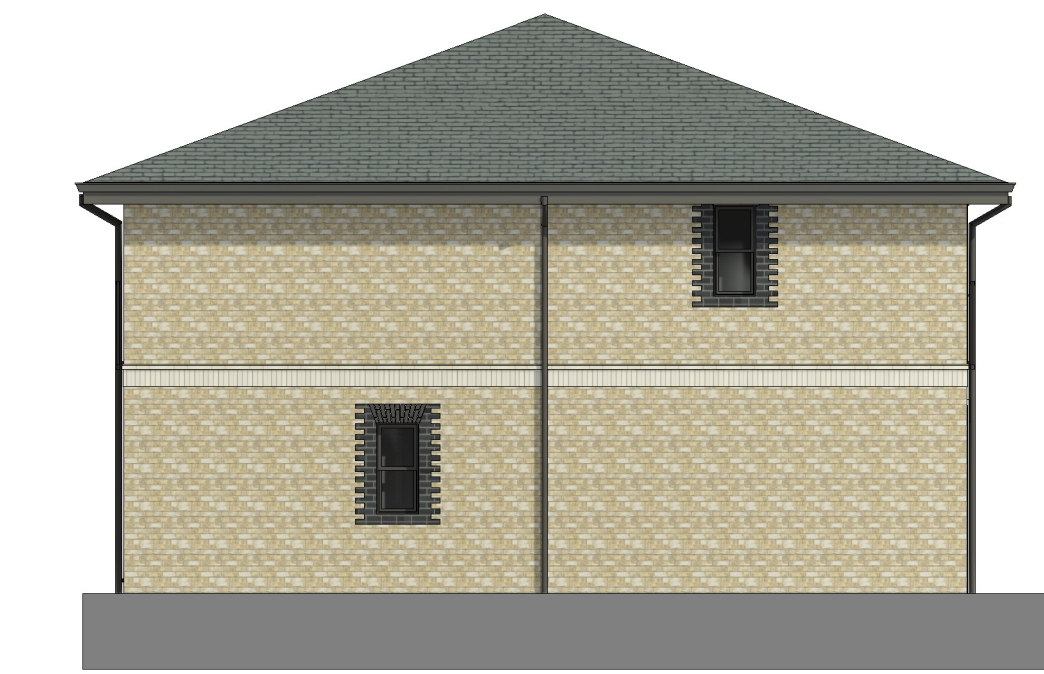
Side (left) elevation
1 : 100



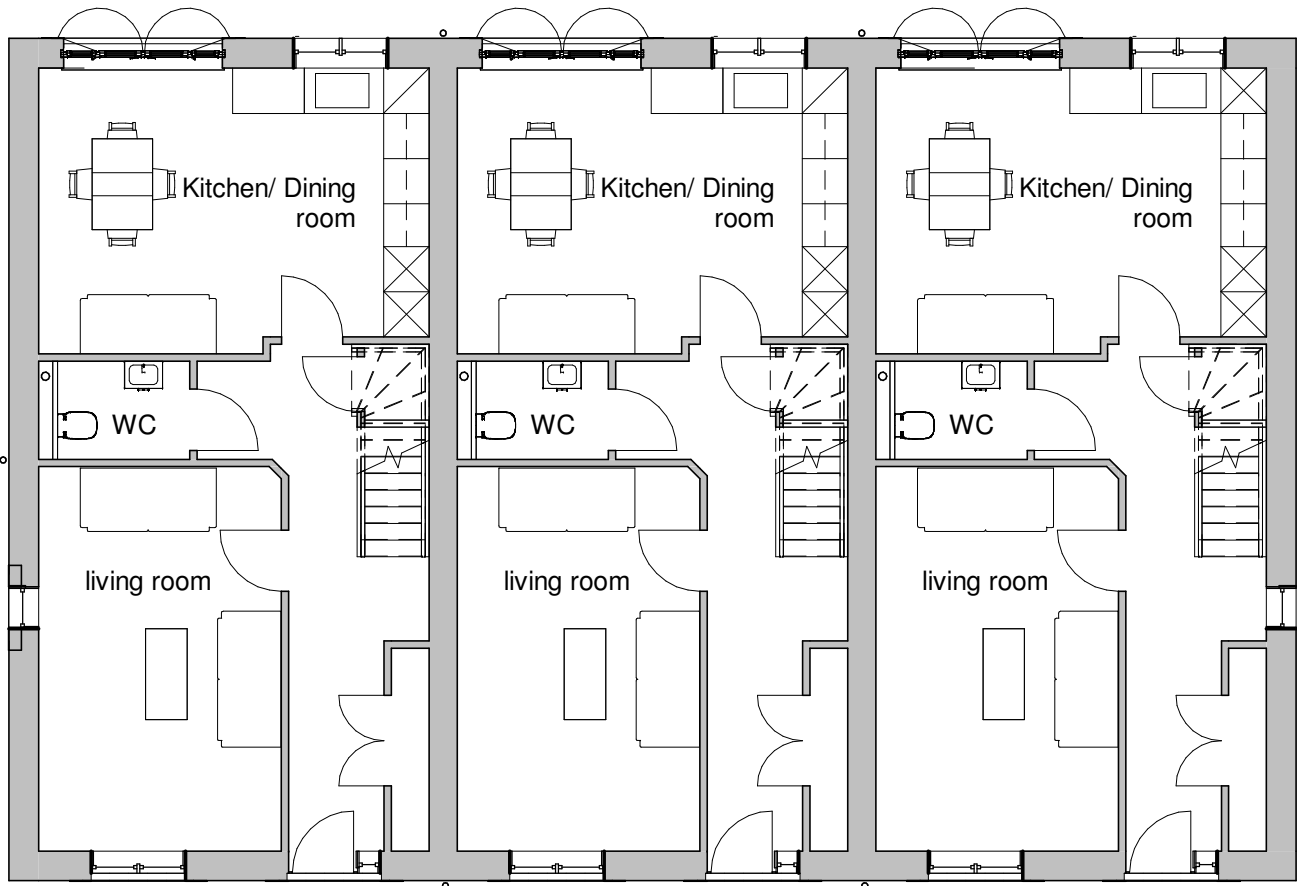
Roof plan
1 : 100



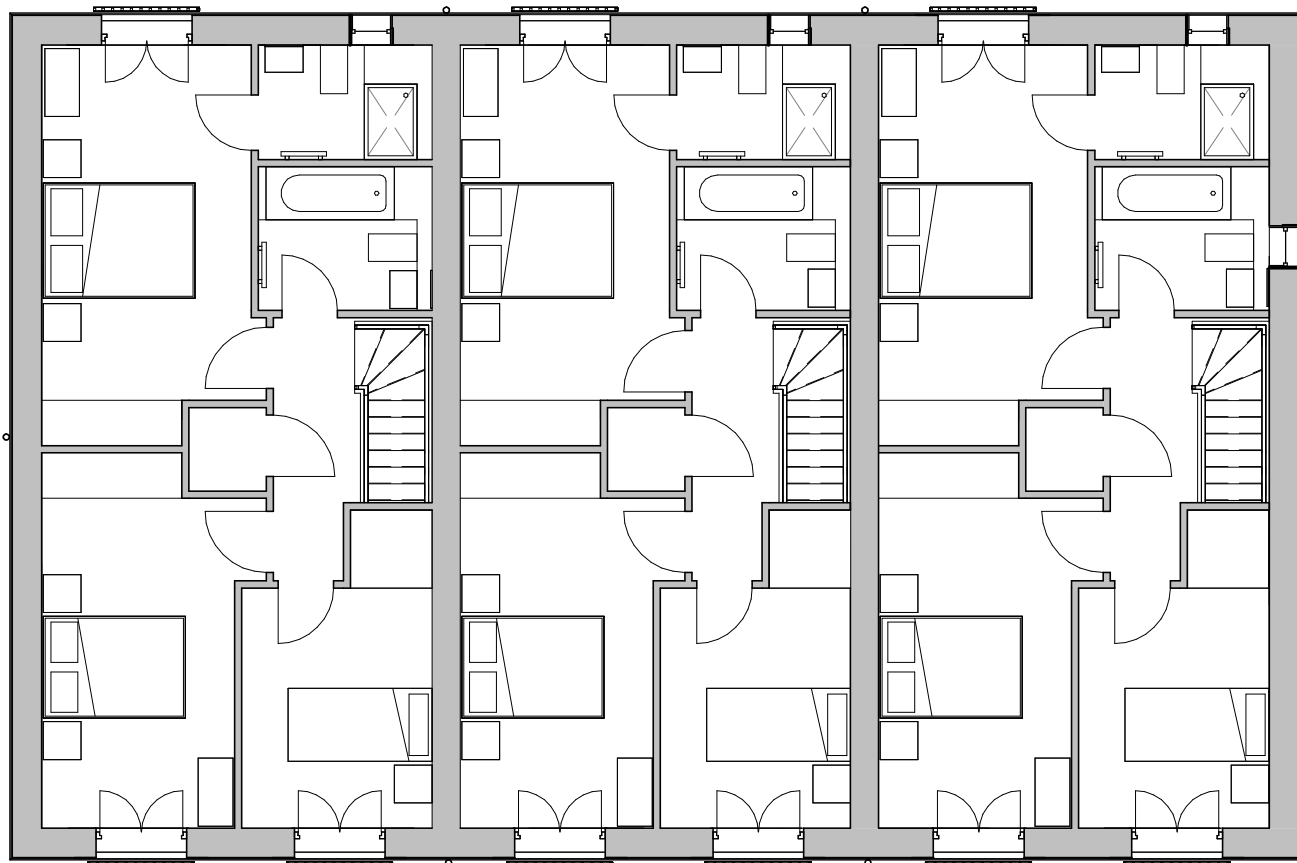
Rear elevation
1 : 100



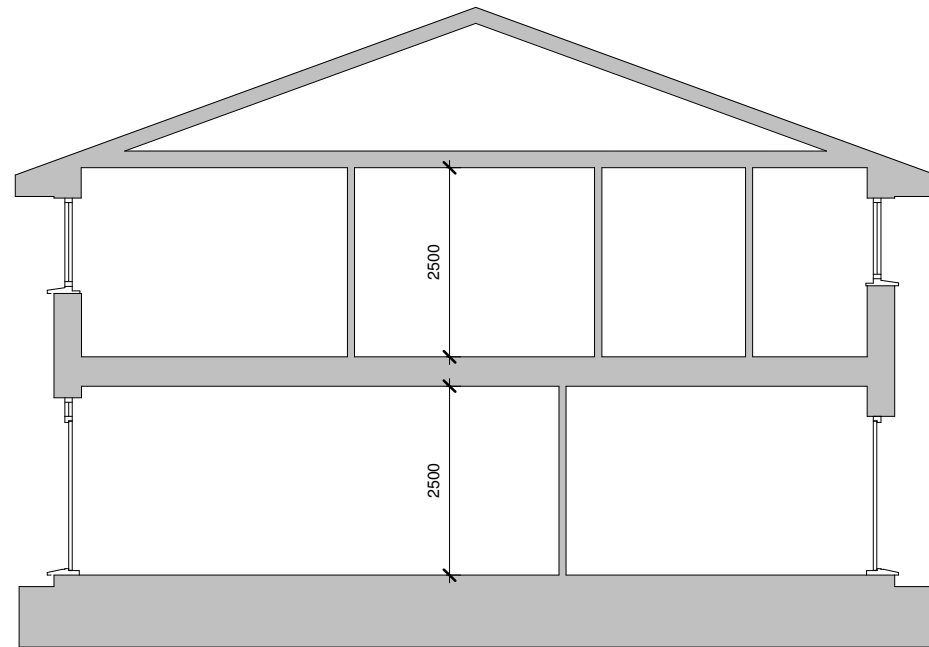
Side (right) elevation
1 : 100



Ground Floor
1 : 100



First Floor
1 : 100



Typical section
1 : 100



The Ash
3 bed house terrace
106.8 sq.m. (1150 sq.ft.)



The Excitement is Building

Chase new Homes
16-18 Howard Business park
Howard Close
Waltham Abbey
Essex
EN9 1XE
Tel: 01992 766658
fax: 01992 715406

NOTES
windows to have equal casements
walls-facing bricks
roof -Eternit Thrutone Fibre Slate Blue/Black
doors-dark
boiler flues-black
window reveals 255mm

C	general revisions, cgi added	25/04/2023
B	revisions to fenestration to bedrooms	30/03/2023
A	general revisions	29/10/2021
REV	AMENDMENTS	DATE
DRAWN BY SL	DATE 31/05/17	
SCALE (@ A1) 1 : 100	PROJECT NUMBER 21 0037	
CHECKED BY Checker	APPROVED	
TITLE The Ash 3 bed terrace 3		
PROJECT THE BARN HOTEL, WEST END ROAD, RUISLIP, HA4 6JB		
DRAWING NUMBER 22 0063-301 C		