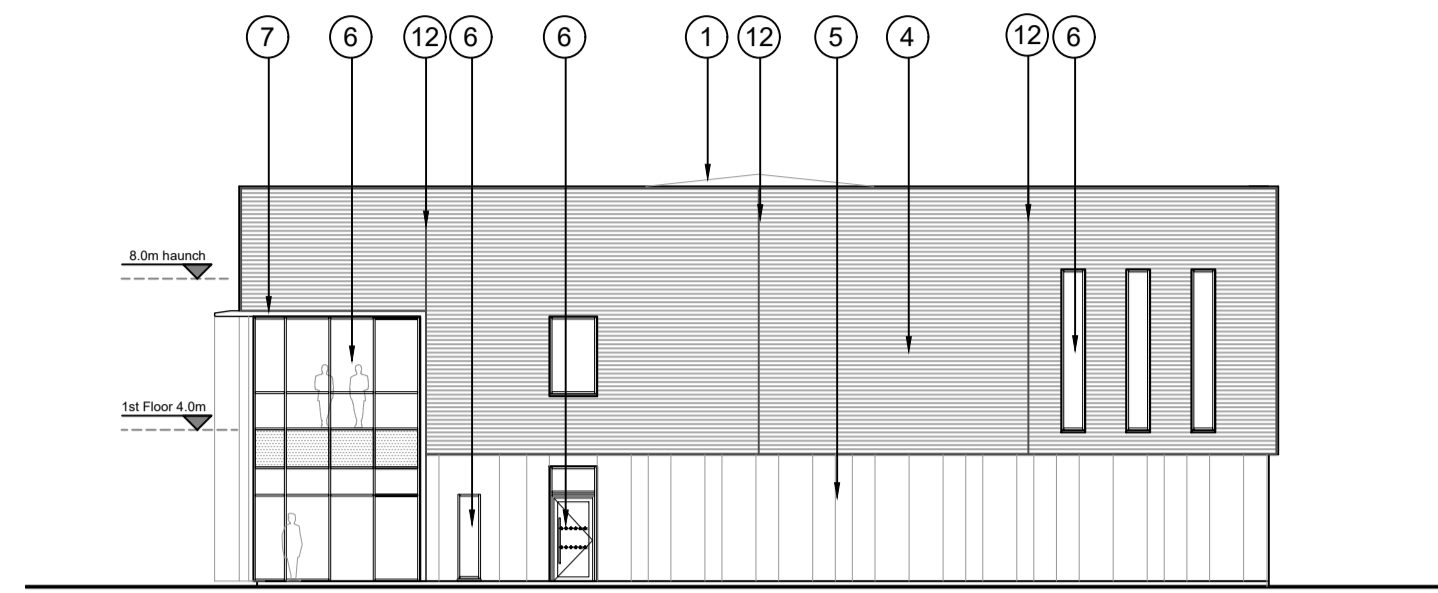
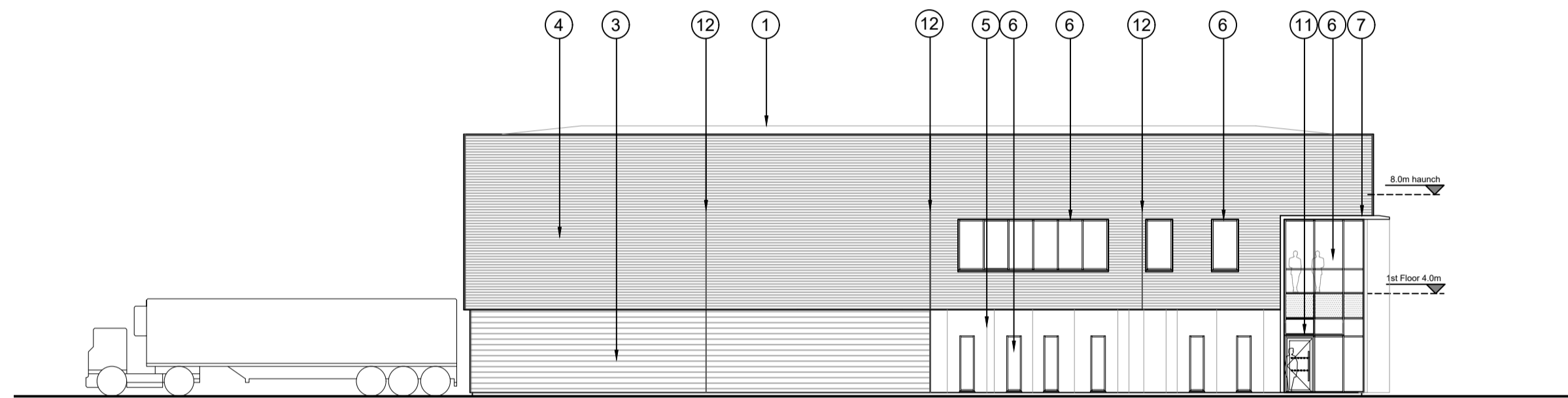


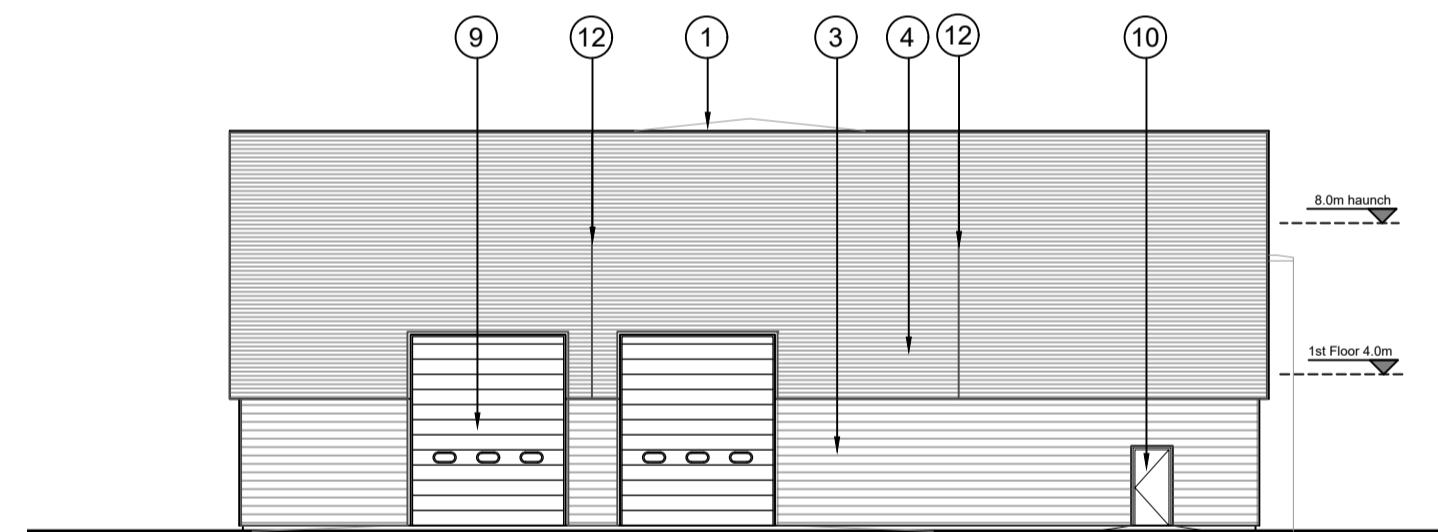
© MICHAEL SPARKS ASSOCIATES
 COPYRIGHT RESERVED.
 SUBJECT TO STATUTORY CONSENTS.
 SUBJECT TO SURVEY.
 BASED ON OS MAP REPRODUCED BY PERMISSION OF
 CONTROLLER OF HM STATIONERY OFFICE © CROWN
 COPYRIGHT AND DATABASE RIGHTS 2024. OS
 AC000813445.
 FOR PLANNING PURPOSES ONLY.
 DO NOT USE ELECTRONIC VERSIONS OF THIS DRAWING
 TO DETERMINE DIMENSIONS UNLESS SPECIFICALLY
 AUTHORISED BY MICHAEL SPARKS ASSOCIATES.
 IF USING AN ELECTRONIC VERSION OF THIS DRAWING,
 FIGURED DIMENSIONS TAKE PRECEDENCE. PLEASE
 NOTIFY MICHAEL SPARKS ASSOCIATES OF ANY
 DISCREPANCIES.



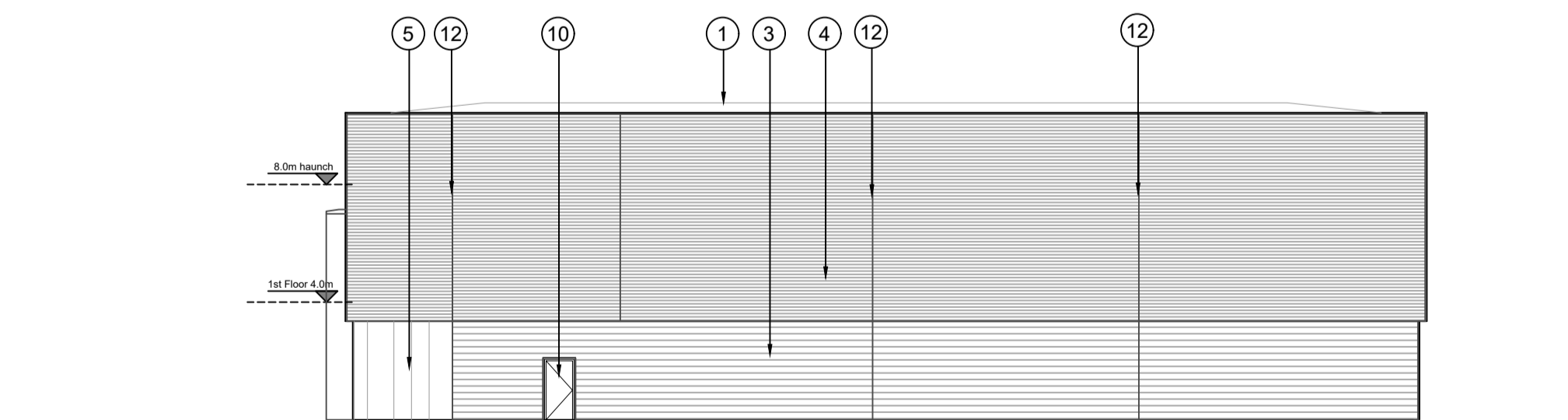
6 NORTH ELEVATION
1:200



4 EAST ELEVATION
1:200




5 SOUTH ELEVATION
1:200




3 WEST ELEVATION
1:200

| SCHEDULE OF EXTERNAL FACING MATERIALS | | |
|---------------------------------------|---|--|
| 1 | ROOF | FULLY INSULATED PROFILED STEEL BUILT-UP ROOF SYSTEM. COLOUR: HPS 200 ALBATROSS LIGHT GREY |
| 3 | WALL CLADDING 1 | FULLY INSULATED TRAPEZOIDAL PROFILED STEEL CLADDING LAID HORIZONTALLY. COLOUR: COLORCOAT PRISMA ZEUS |
| 4 | WALL CLADDING 2 | FULLY INSULATED SINUSOIDAL PROFILED STEEL CLADDING LAID HORIZONTALLY. COLOUR: COLORCOAT PRISMA SIRIUS (RAL 9006) |
| 5 | WALL CLADDING 3 | 2mm THICK FLAT ALUMINIUM PLANKS. FULLY INSULATED FLAT METAL PANEL SYSTEM LAID VERTICALLY. COLOUR: COLORCOAT PRISMA ATLANTIS (BLUE) |
| 6 | CURTAIN WALLING & ENTRANCE/ESCAPE DOORS & WINDOWS | CLEAR ANTISUN TOUGHENED GLASS IN POLYESTER POWDER-COATED CAPLESS STRUCTURAL SILICONE ALUMINIUM CURTAIN WALLING SYSTEM WITH LOOK-ALIKE BACK PAINTED GLASS SPANDREL PANELS & MANIFESTATION. COLOUR: DARK GREY (RAL 7016) SPANDREL COLOURS: RAL 9003 WHITE & RAL 7016 DARK GREY |
| 7 | FEATURE CANOPY | FEATURE FLASHING 150mm HIGHWIDE. COLOUR: ZEUS (DARK GREY) |
| 9 | LOADING DOORS | METAL FACED COMPOSITE SECTIONAL DOOR. EXTERNAL COLOUR: SIRIUS (RAL 9006) INTERNAL COLOUR: WHITE (RAL 9002) |
| 10 | PERSONNEL / FIRE EXIT DOORS | COATED STEEL DOOR. COLOUR: SIRIUS (RAL 9006) |
| 11 | ENTRANCE CANOPY | OPAQUE TOUGHENED GLASS CANOPY WITH STAINLESS-STEEL SUPPORTS |
| 12 | FLASHINGS | VERTICAL FIN DETAIL FLASHING. COLOUR: SILVER METALLIC RAL 9006 / GREY ALUMINIUM RAL 9007 TO MATCH ADJACENT CLADDING |

| REV | DATE | NOTES | DRAWN | CHECKED |
|------|----------|------------------------------------|-------|---------|
| PL03 | 19/01/26 | Low level cladding changed to blue | sd | mt |
| PL02 | 01/07/25 | Notes updated. | sd | mk |
| PL03 | 09/05/25 | Issued for Planning | BF | SD |



11 PLATO PLACE ST DIONIS ROAD LONDON SW16 4TU
 CHARTERED ARCHITECTS 020 7736 6162 WWW.MSA-ARCHITECTS.CO.UK



PROJECT TITLE
HORTON ROAD, WEST DRAYTON

MSA JOB No. **31906**

CLIENT
LE MASURIER

DOCUMENT TITLE
UNIT 1 - ELEVATIONS

SCALE
1:200 @ A1

DATE 23/05/25
 DRAWN sd
 CHECKED mk

DOCUMENT NUMBER
HRWD-MSA-01-XX-DR-A-20005

STATUS
 PLANNING

REV
 PL03

