



© AVR LONDON



Preliminary Alignment



1.6 m above ground

08:23 13 May 2025

Hyde Park
Hayes
July 2025



View 2D_ Keith Road



© AVR LONDON



Preliminary Alignment



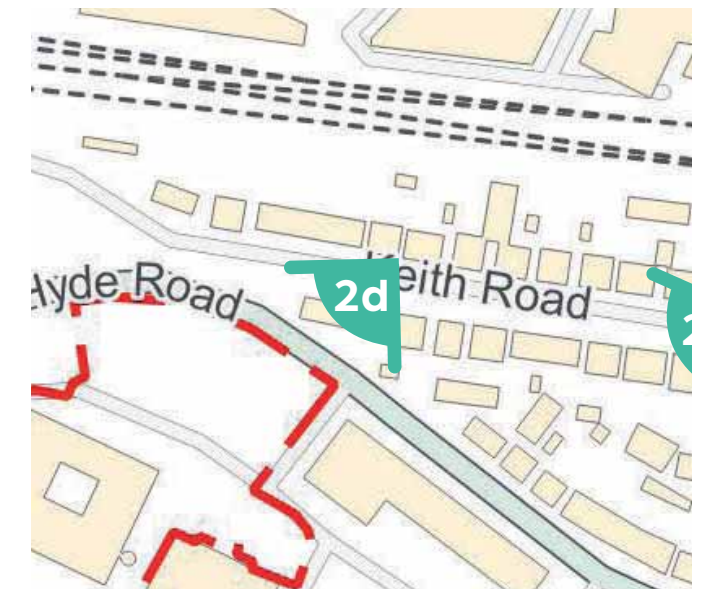
1.6 m above ground

08:23 13 May 2025

Hyde Park
Hayes
July 2025

— = Max Parameter

— = Additional Plant Area

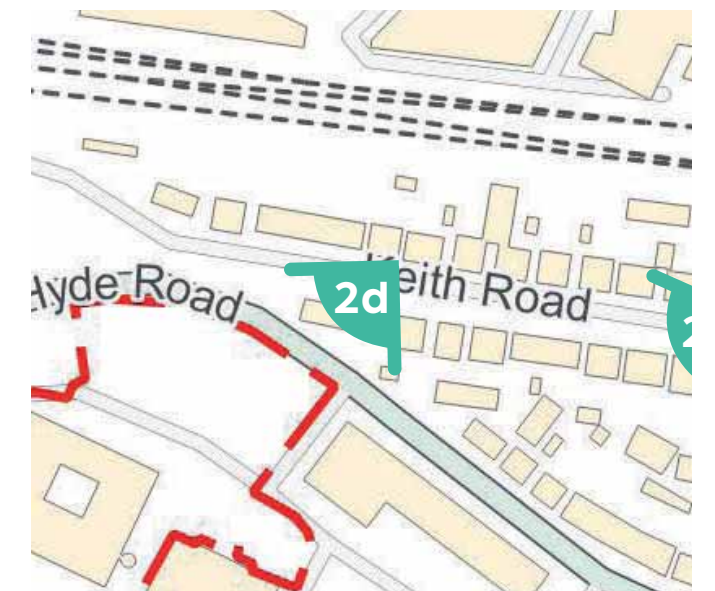


View 2D_ Keith Road



Hyde Park
Hayes
July 2025

— = Max Paramiter
— = Additional Plant Area



View 2D_ Keith Road

Hyde Park
Hayes
July 2025



View 3A_ Shepiston Lane



Hyde Park
Hayes
July 2025

- = Max Paramiter
- = Additional Plant Area



View 3A_ Shepiston Lane



Hyde Park
Hayes
July 2025

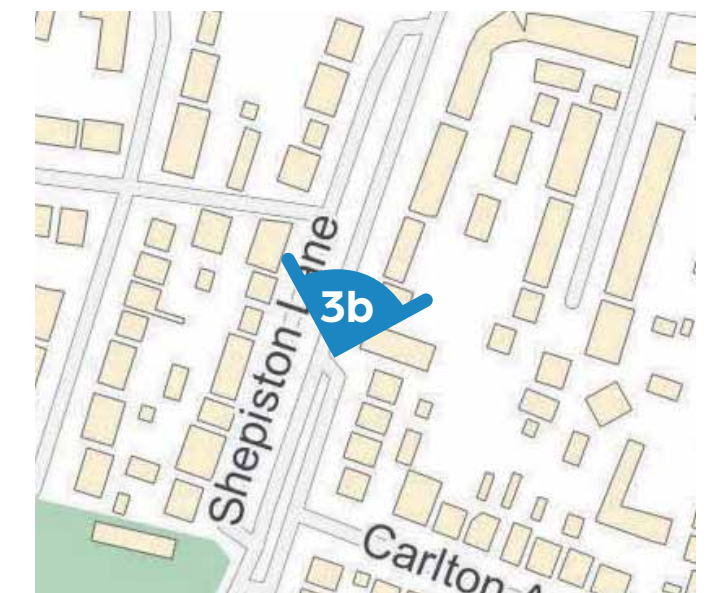
— = Max Paramiter

— = Additional Plant Area



View 3A_ Shepiston Lane

Hyde Park
Hayes
July 2025

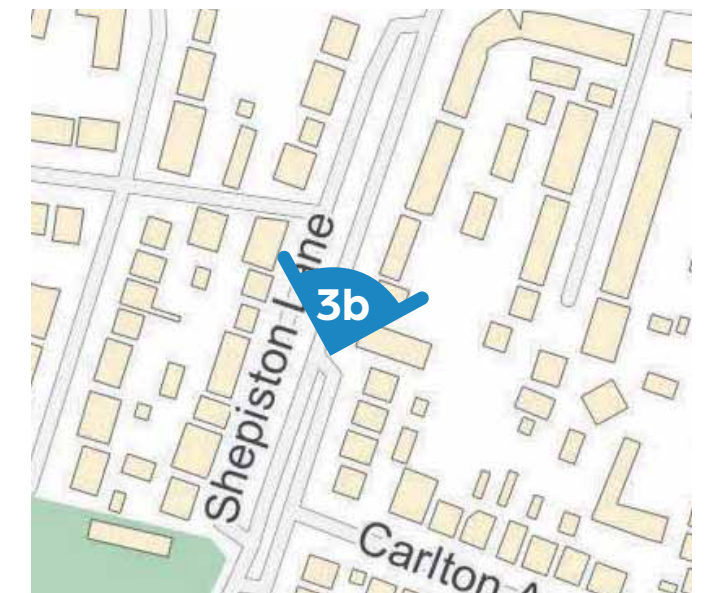


View 3B_ Shepiston Lane

Hyde Park
Hayes
July 2025

— = Max Parameter

— = Additional Plant Area



© AVR LONDON

Preliminary Alignment

1.6 m above ground

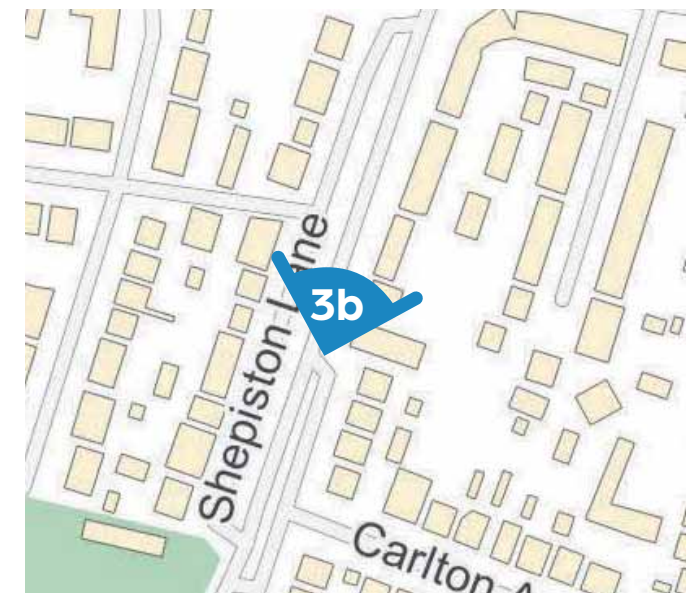
11:39 13 May 2025

View 3B_ Shepiston Lane

Hyde Park
Hayes
July 2025

— = Max Paramiter

— = Additional Plant Area



© AVR LONDON

Preliminary Alignment

1.6 m above ground

11:39 13 May 2025

View 3B_ Shepiston Lane



Hyde Park
Hayes
July 2025



View 3C_ Dawley Road

Hyde Park
Hayes
July 2025



View 3C_ Dawley Road



Hyde Park
Hayes
July 2025

— = Max Parameter

— = Additional Plant Area



View 3C_ Dawley Road



Hyde Park
Hayes
July 2025

— = Max Paramiter

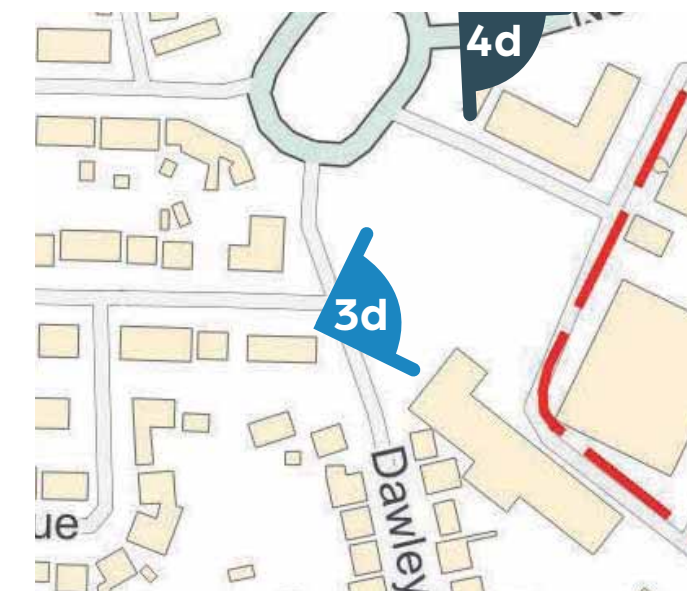
— = Additional Plant Area



View 3C_ Dawley Road



Hyde Park
Hayes
July 2025



View 3D_ Dawley Road



Hyde Park
Hayes
July 2025

— = Max Parameter

— = Additional Plant Area



View 3D_ Dawley Road



Hyde Park
Hayes
July 2025

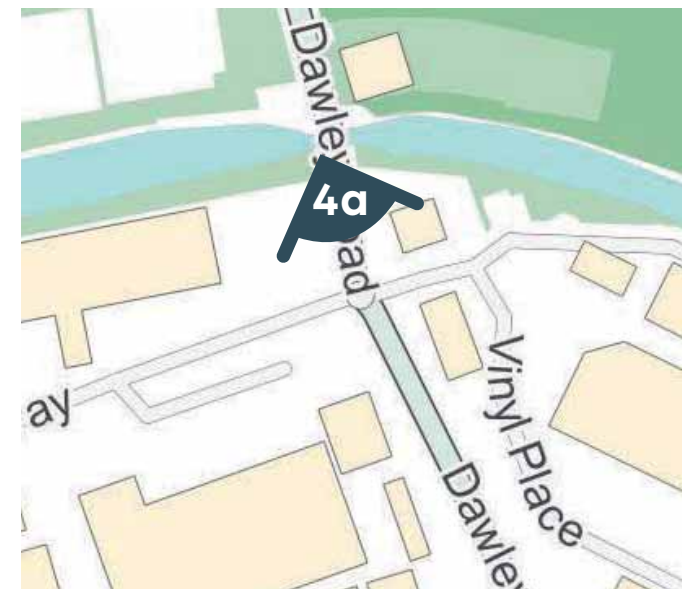
— = Max Paramiter

— = Additional Plant Area



View 3D_ Dawley Road

Hyde Park
Hayes
July 2025



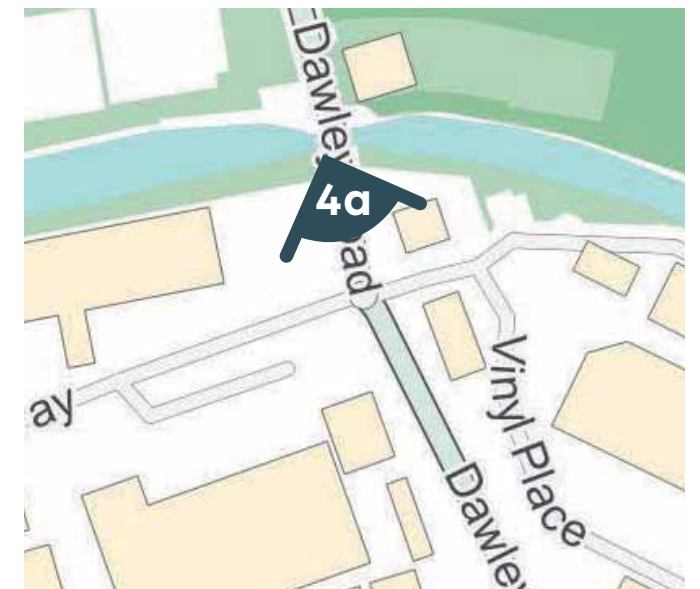
View 4A_ Dawley Road at Grand Union Canal



Hyde Park
Hayes
July 2025

— = Max Parameter

— = Additional Plant Area



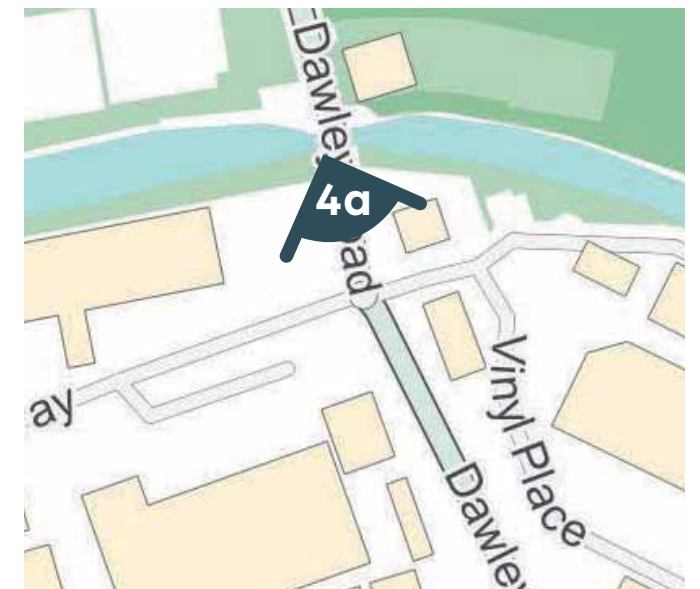
View 4A_ Dawley Road at Grand Union Canal



Hyde Park
Hayes
July 2025

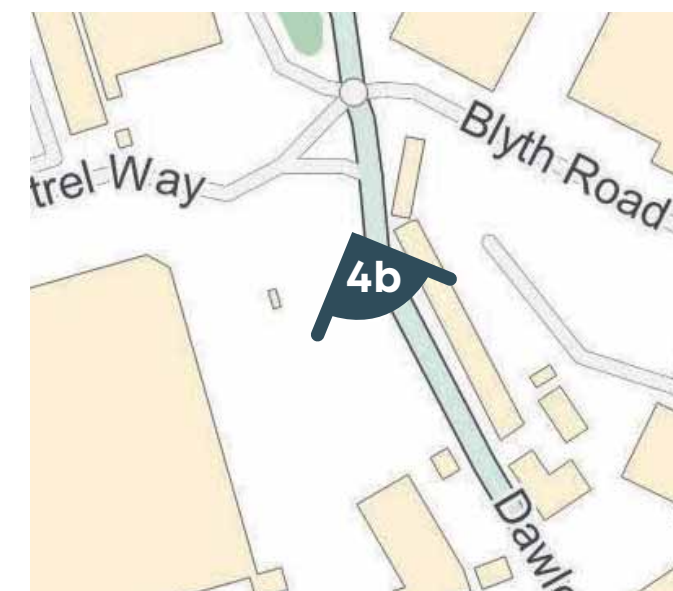
— = Max Paramiter

— = Additional Plant Area



View 4A_ Dawley Road at Grand Union Canal

Hyde Park
Hayes
July 2025



View 4B_ Dawley Road

Hyde Park
Hayes
July 2025

— = Max Parameter
— = Additional Plant Area



View 4B_ Dawley Road



Hyde Park
Hayes
July 2025

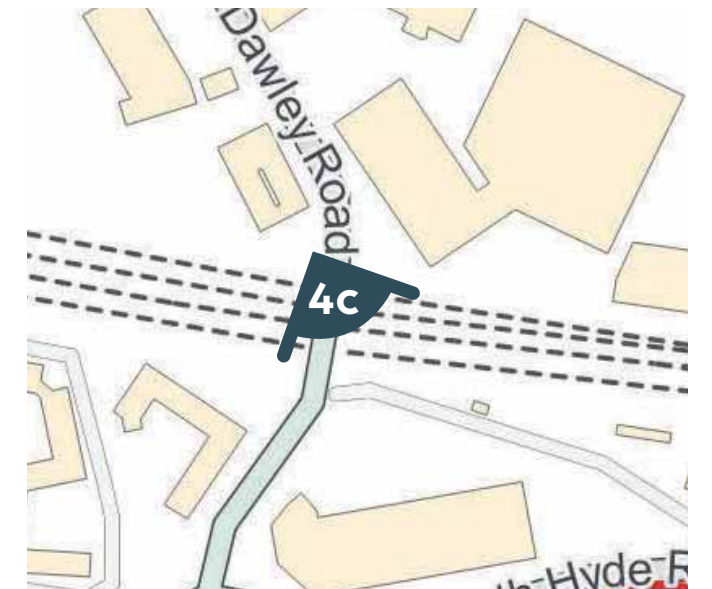
— = Max Paramiter

— = Additional Plant Area



View 4B_ Dawley Road

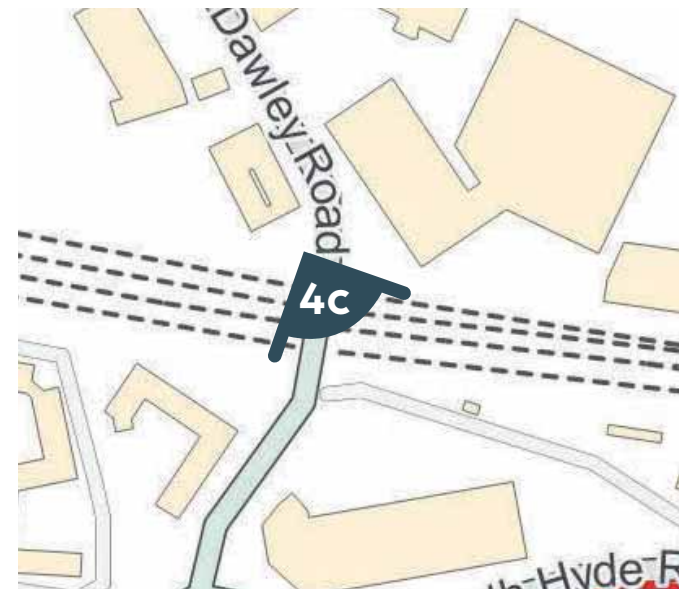
Hyde Park
Hayes
July 2025



View 4C_ Dawley Road

Hyde Park
Hayes
July 2025

— = Max Parameter
— = Additional Plant Area



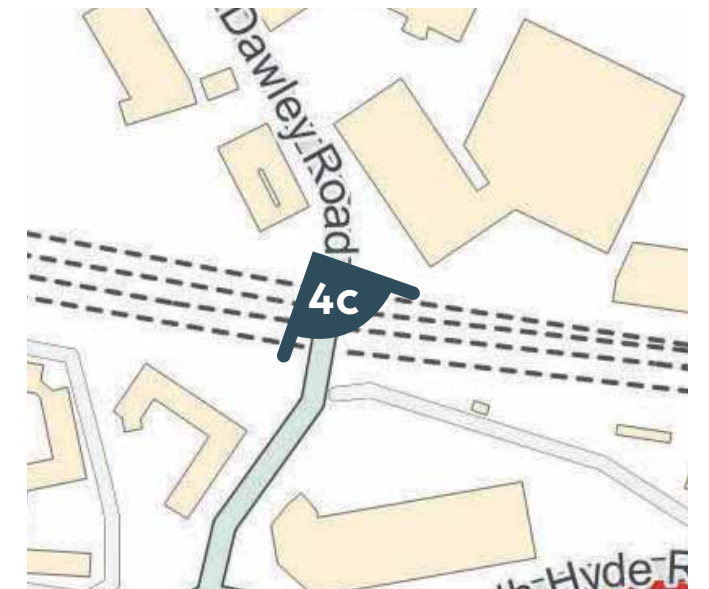
View 4C_ Dawley Road



Hyde Park
Hayes
July 2025

— = Max Paramiter

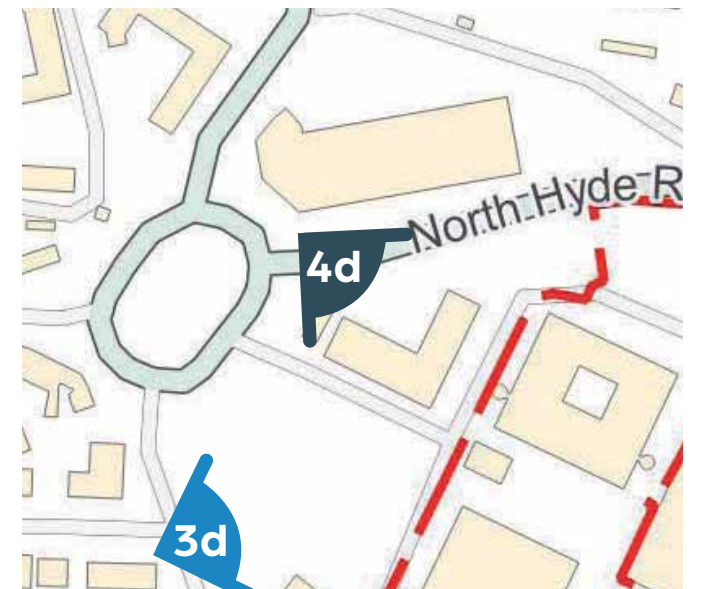
— = Additional Plant Area



View 4C_ Dawley Road



Hyde Park
Hayes
July 2025



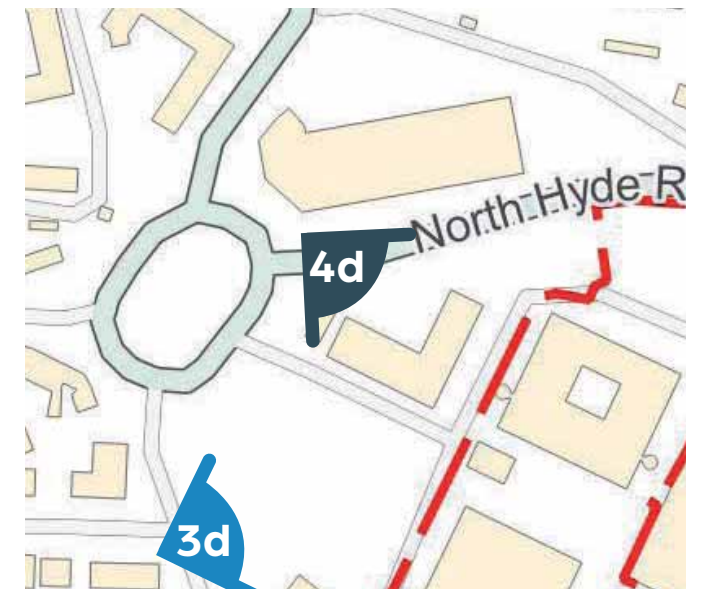
View 4D_ Dawley Road



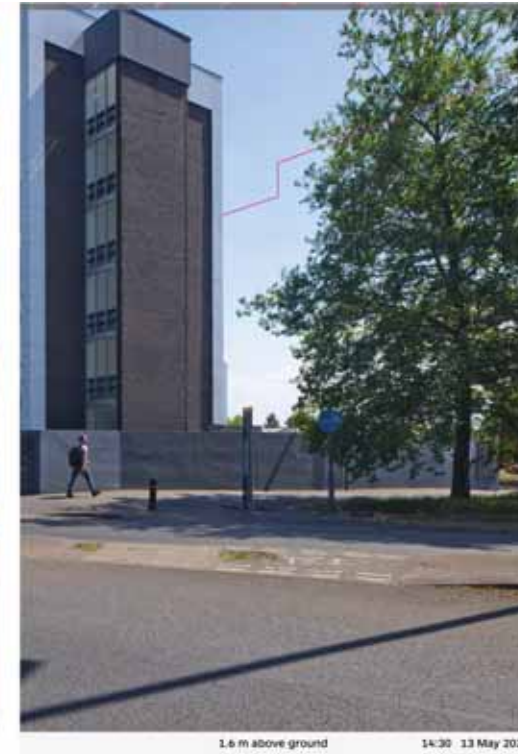
Hyde Park
Hayes
July 2025

— = Max Parameter

— = Additional Plant Area



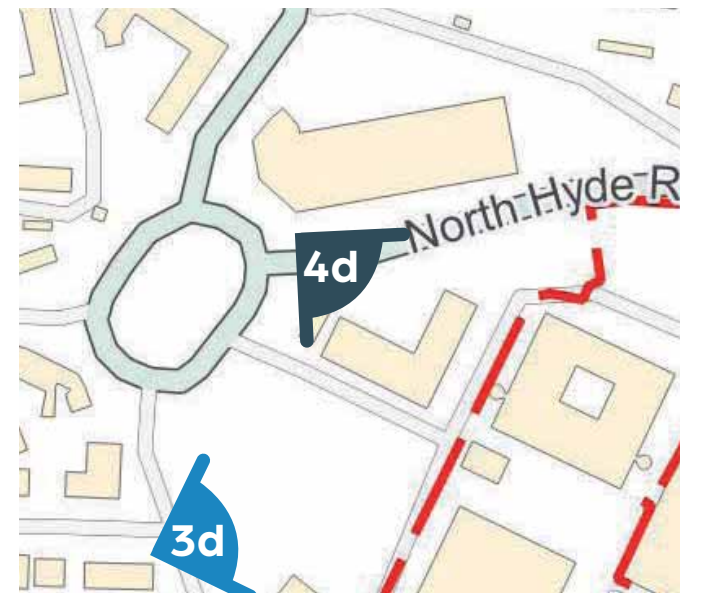
View 4D_ Dawley Road



Hyde Park
Hayes
July 2025

— = Max Paramiter

— = Additional Plant Area

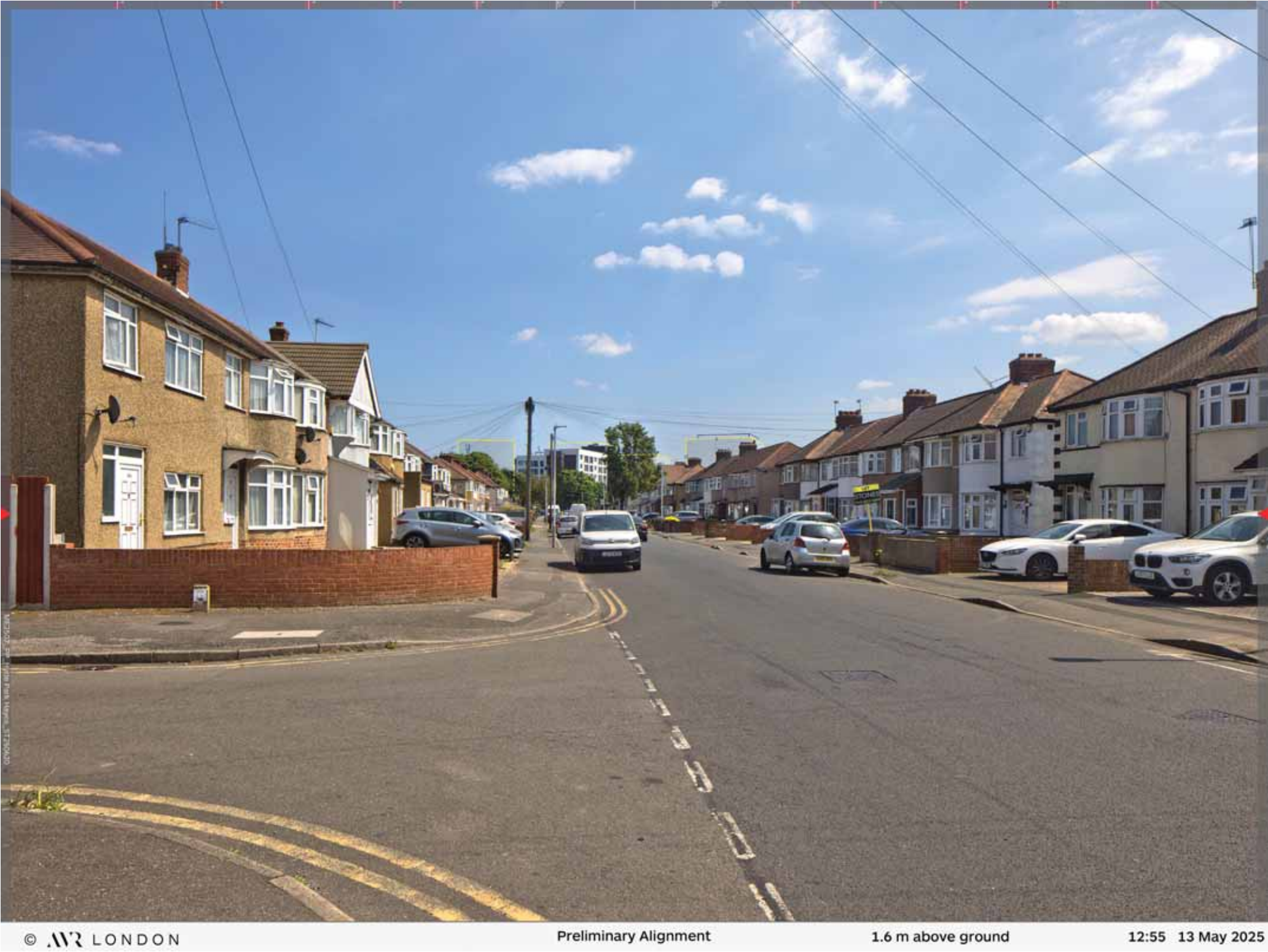


View 4D_ Dawley Road

Hyde Park
Hayes
July 2025



View 5_ Bourne Avenue



Hyde Park
Hayes
July 2025

- = Max Paramiter
- = Additional Plant Area



View 5_ Bourne Avenue



Hyde Park
Hayes
July 2025

— = Max Paramiter

— = Additional Plant Area



View 5_ Bourne Avenue

Hyde Park
Hayes
July 2025



View 6_ Waltham Avenue



Hyde Park
Hayes
July 2025

— = Max Parameter

— = Additional Plant Area



View 6_ Waltham Avenue



Hyde Park
Hayes
July 2025

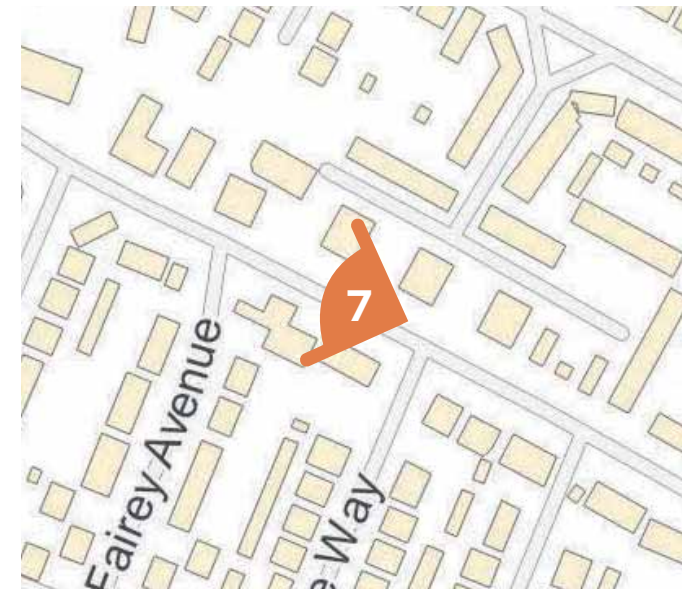
— = Max Paramiter

— = Additional Plant Area



View 6_ Waltham Avenue

Hyde Park
Hayes
July 2025



View 7_ North Hyde Road

Hyde Park
Hayes
July 2025

— = Max Paramiter

— = Additional Plant Area

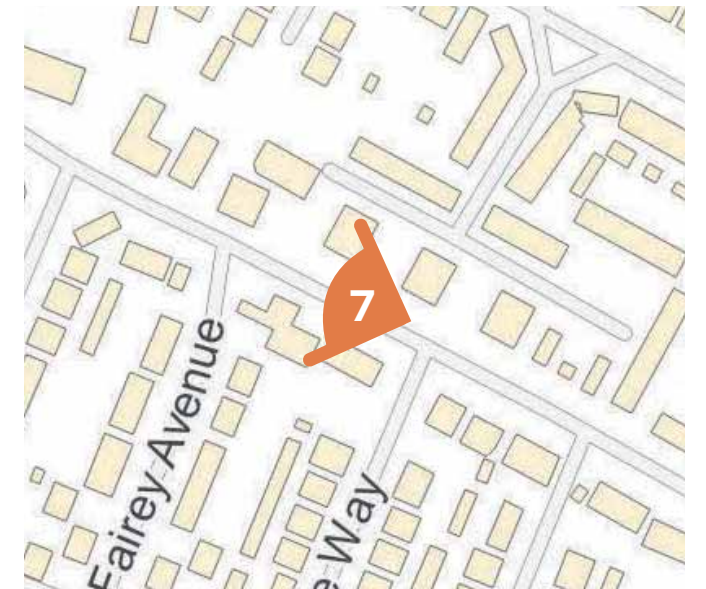


View 7_ North Hyde Road



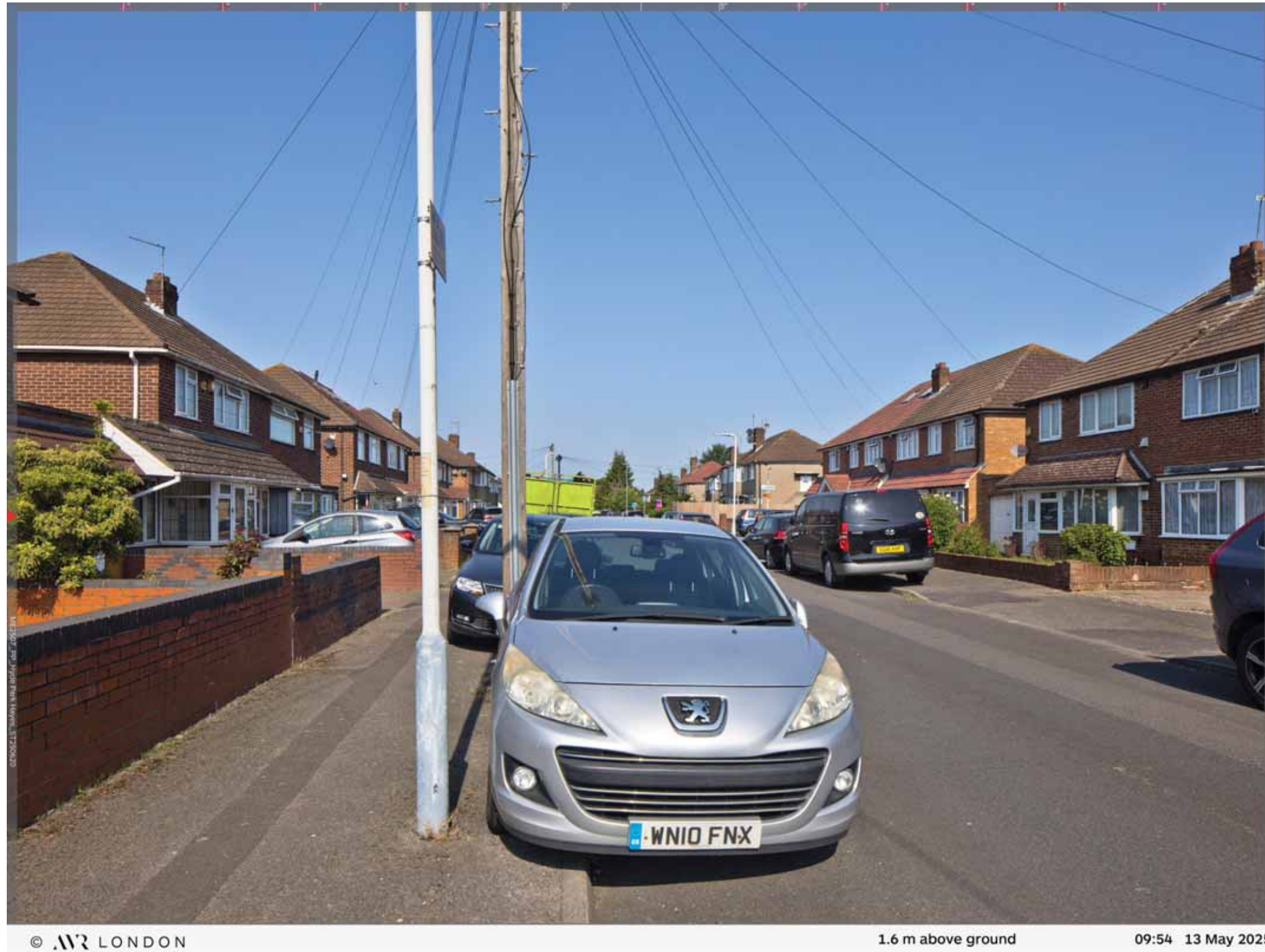
Hyde Park
Hayes
July 2025

— = Max Paramiter
— = Additional Plant Area



View 7_ North Hyde Road

Hyde Park
Hayes
July 2025

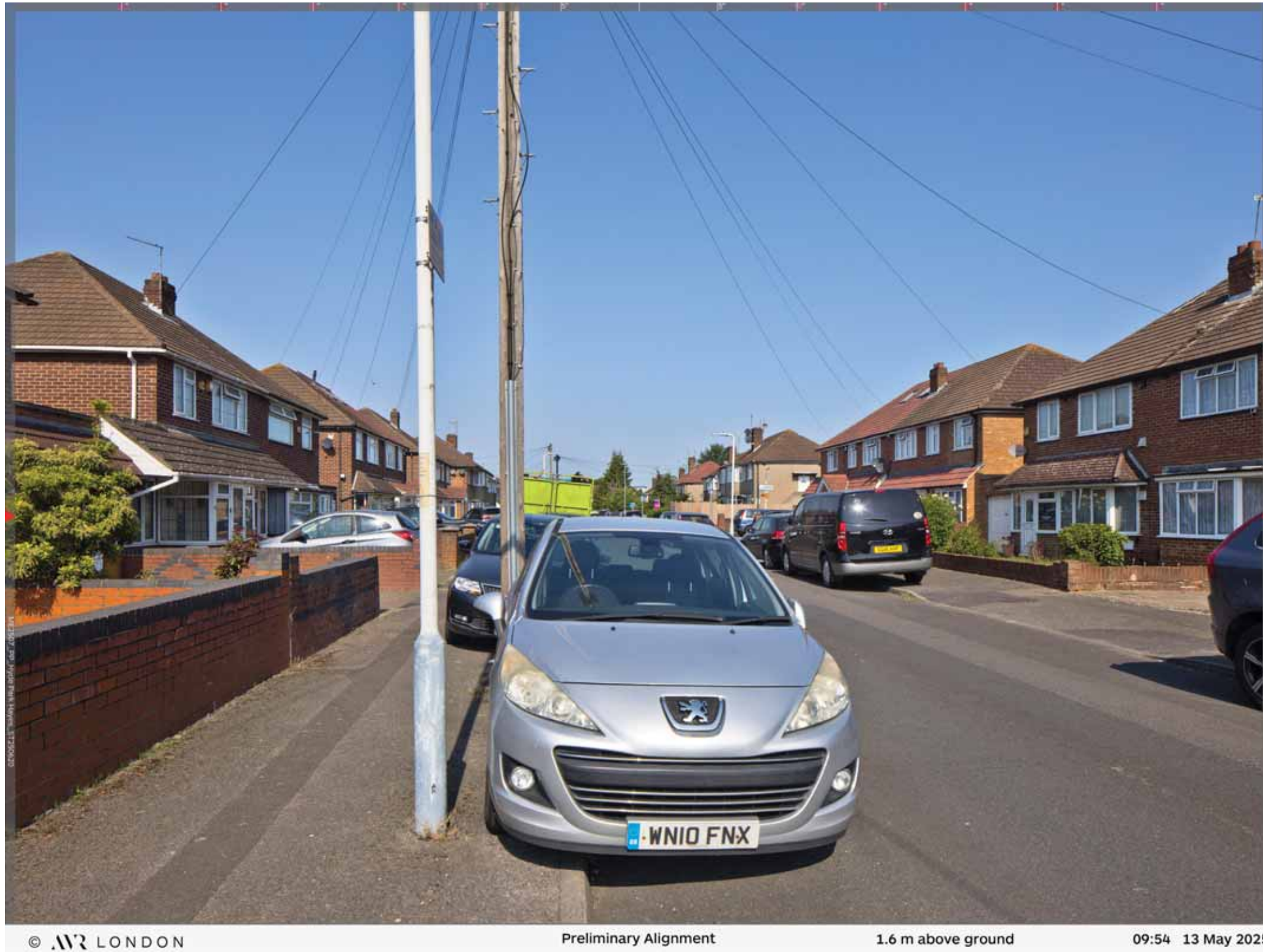


View 8_ Laburnum Road

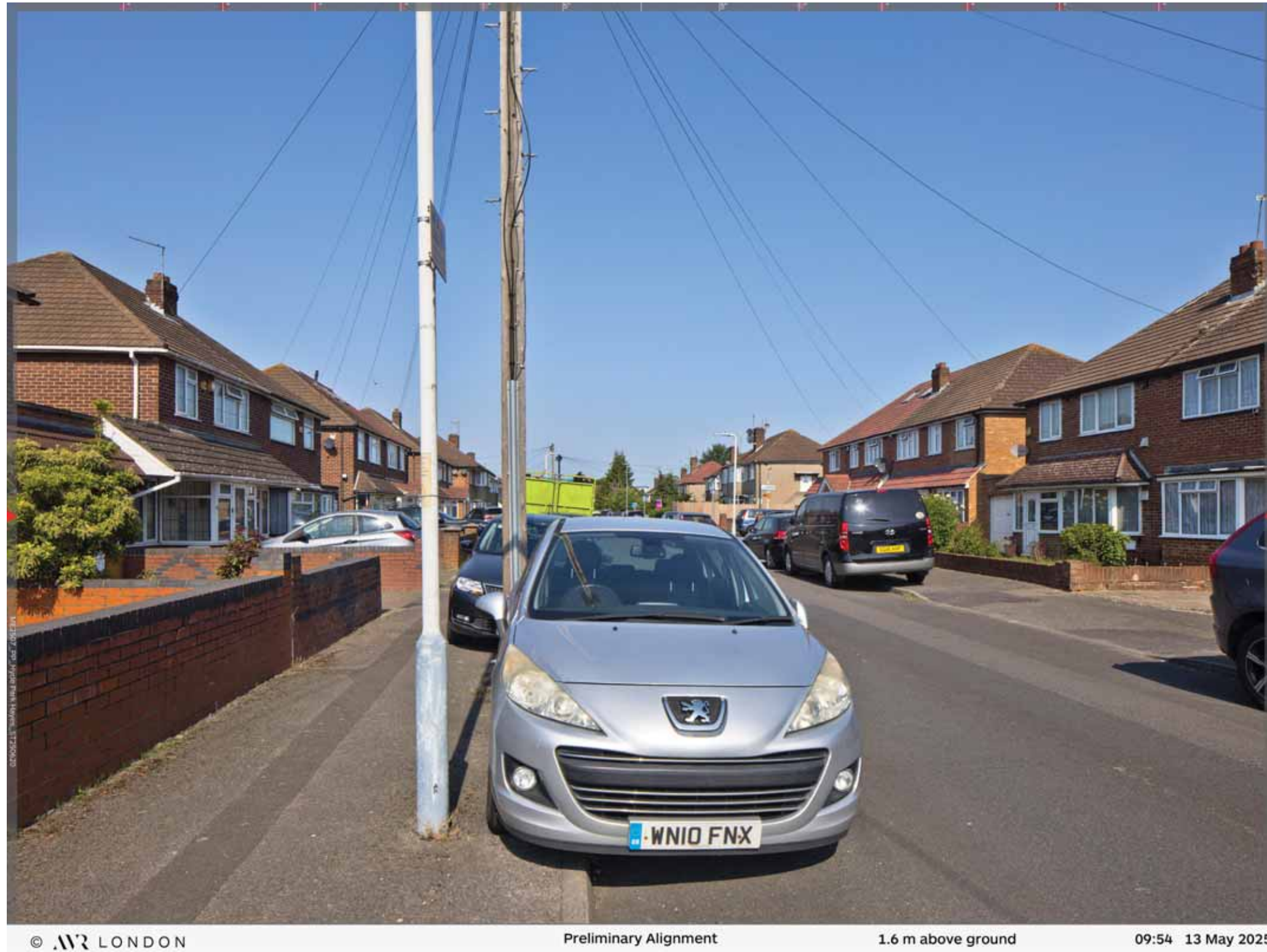
Hyde Park
Hayes
July 2025

— = Max Parameter

— = Additional Plant Area



View 8_ Laburnum Road



Hyde Park
Hayes
July 2025

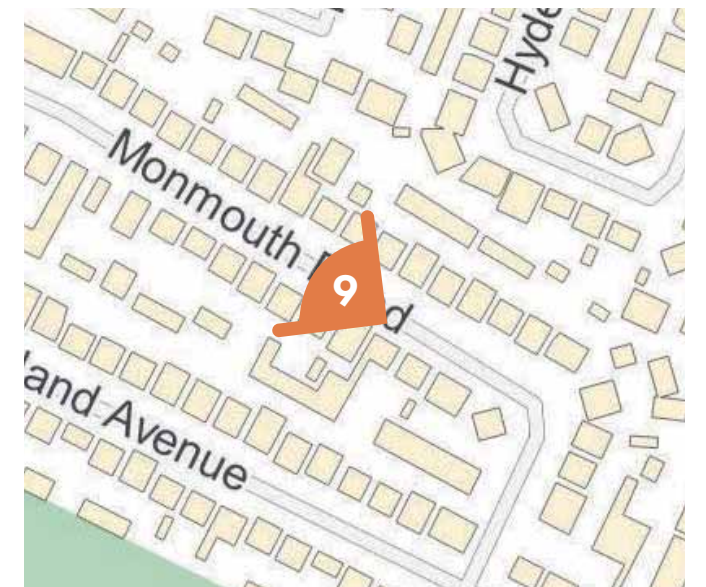
— = Max Paramiter

— = Additional Plant Area



View 8_ Laburnum Road

Hyde Park
Hayes
July 2025

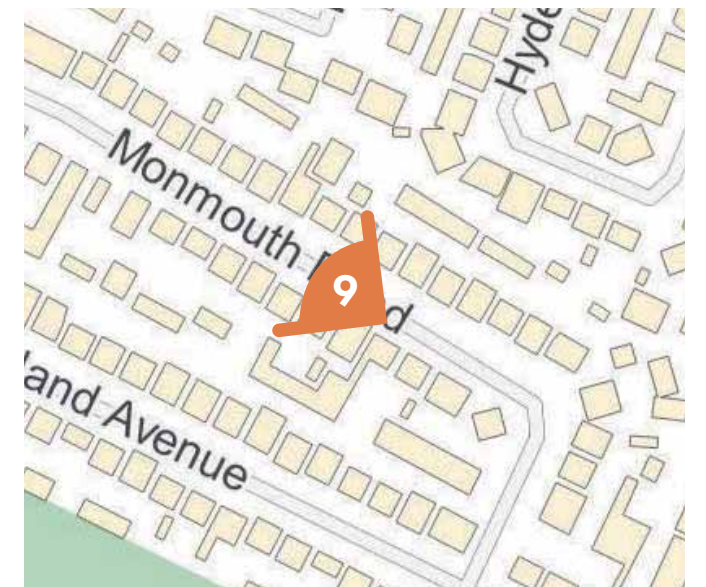
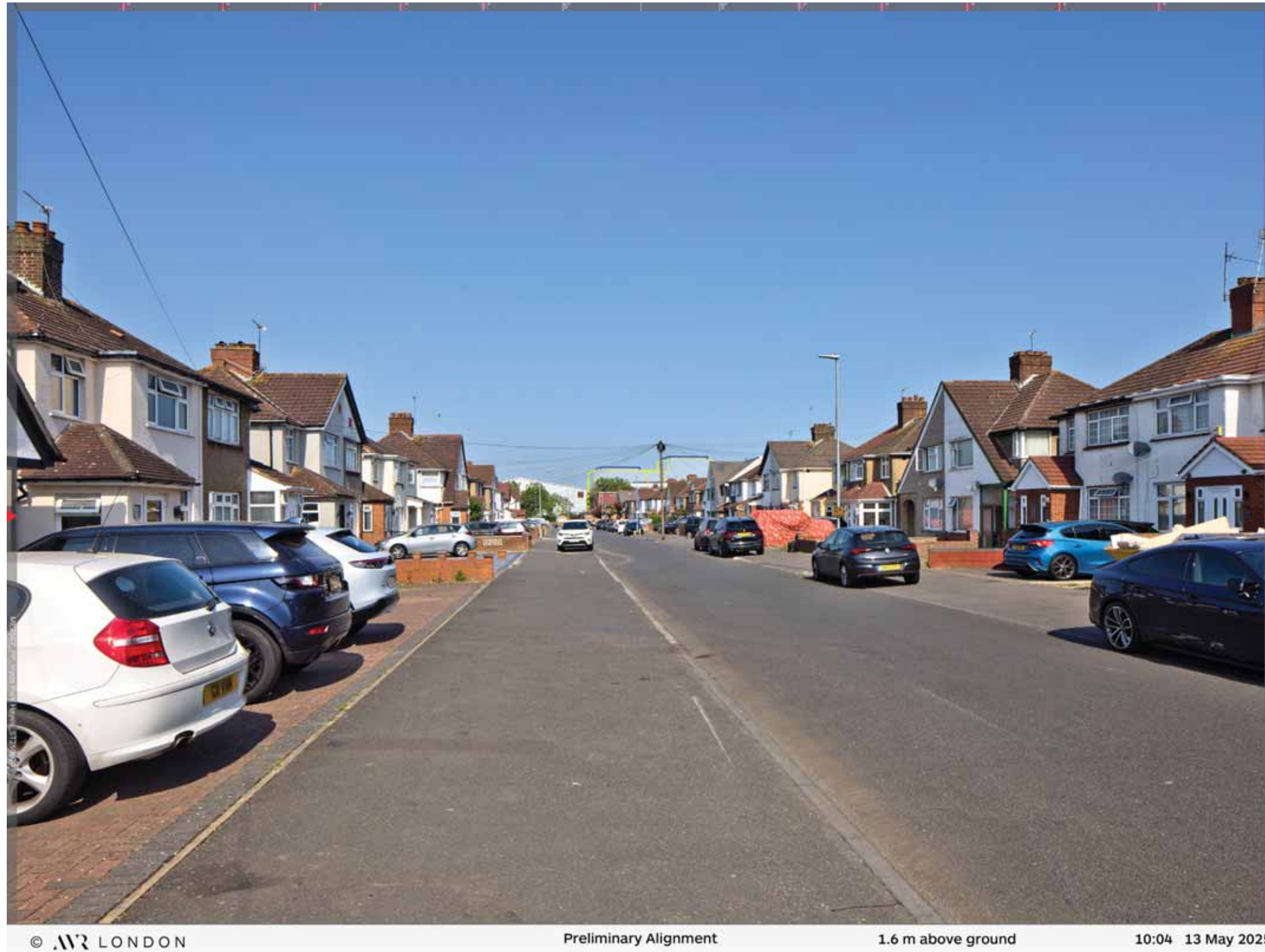


View 9_ Monmouth Road

Hyde Park
Hayes
July 2025

— = Max Parameter

— = Additional Plant Area



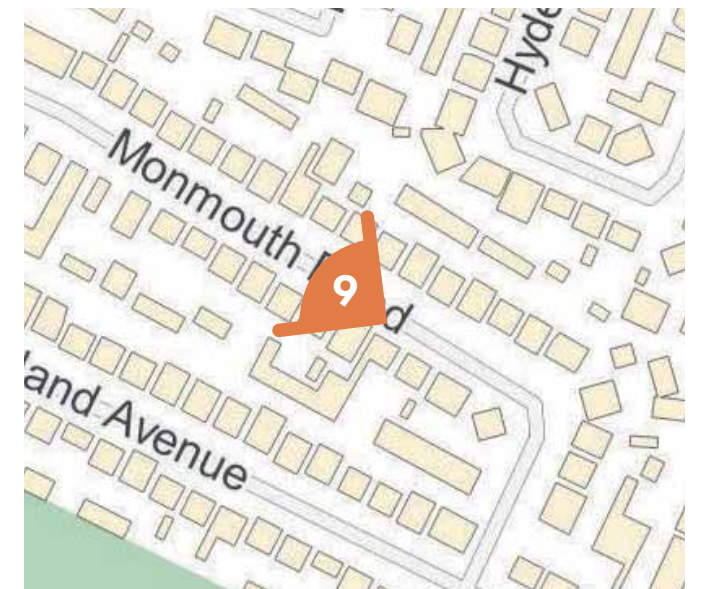
View 9_ Monmouth Road



Hyde Park
Hayes
July 2025

— = Max Paramiter

— = Additional Plant Area



View 9_ Monmouth Road

Hyde Park
Hayes
July 2025



View 10_ Wentworth Crescent



Hyde Park
Hayes
July 2025

— = Max Parameter

— = Additional Plant Area



View 10_ Wentworth Crescent



Hyde Park
Hayes
July 2025

— = Max Paramiter

— = Additional Plant Area



View 10_ Wentworth Crescent

Hyde Park
Hayes
July 2025



View 11_ North Hyde Road_Station Road

Hyde Park
Hayes
July 2025

— = Max Parameter

— = Additional Plant Area



View 11_ North Hyde Road_Station Road

Hyde Park
Hayes
July 2025

— = Max Paramiter

— = Additional Plant Area



View 11_ North Hyde Road_Station Road

AVR

LONDON

avr.london
info@avrlondon.com
+44 (0)208 858 3226

AVR London
6 David Mews
Greenwich, SE10 8NJ

APPENDIX 4: LIST ENTRY DESCRIPTIONS

HYDE PARK, HAYES, UB3 4AZ

ENTERPRISE HOUSE

Listed on the National Heritage List for England. Search over 400,000 listed places

(<https://historicengland.org.uk/listing/the-list/>)

Official list entry

Heritage Category:**Listed Building**

Grade:**II**

List Entry Number:**1244861**

Date first listed:**31-Oct-1997**

List Entry Name:**ENTERPRISE HOUSE**

Statutory Address 1:**ENTERPRISE HOUSE, BLYTH ROAD**

This List entry helps identify the building designated at this address for its special architectural or historic interest.

Unless the List entry states otherwise, it includes both the structure itself and any object or structure fixed to it (whether inside or outside) as well as any object or structure within the curtilage of the building.

For these purposes, to be included within the curtilage of the building, the object or structure must have formed part of the land since before 1st July 1948.

[Understanding list entries](#)

(<https://historicengland.org.uk/listing/the-list/understanding-list-entries/>)

[Corrections and minor amendments](#)

(<https://historicengland.org.uk/listing/the-list/minor-amendments/>)

Location

Statutory Address:**ENTERPRISE HOUSE, BLYTH ROAD**

The building or site itself may lie within the boundary of more than one authority.

County:**Greater London Authority**

District:**Hillingdon (London Borough)**

Parish:**Non Civil Parish**

National Grid Reference:**TQ0935479607**

Details

TQ 07 NE 804/2/10040

HAYES BLYTH ROAD Enterprise House II

Former gramophone factory for His Master's Voice, now warehousing and industrial units. 1912 by the Trussed Concrete Steel Company, E Owen Williams senior designer. Reinforced concrete frame, with posts and beams using the Kahn system of reinforcement patented in 1903 by Albert and Julius Kahn in Detroit, USA, and painted brick infill. The building is unusual for its date not only in its system of construction but that this is expressed externally. Flat roof, with north-facing rooflights to rear. Irregular E-shaped plan, with offset centre denoted by rooftop water tank, its wings projecting to rear. Street facade is 1-10-3-5 bay composition, with offset three-bay centre containing staircase set round central liftshaft and topped by watertank - itself supported on a concrete frame treated as a tripartite arch to the streetfront. Small pane metal windows with central opening casements. Iron railing to roof.

Sides and rear similar, but east side and rear with projecting frame indicating that the building was intended to be extended. The treatment of the reinforcement bars at the top of the columns as a form of capital is distinctive in concrete construction of this period and is also found internally. Sir E Owen Williams is the most significant engineer turned architect in twentieth-century British architecture, noted for his work for the Boots Pure Drug Company, the Daily Express and British Overseas Airways Corporation. This is his first known work. It is significant in its own right as an early reinforced concrete building which is unusual for its date in that the frame clearly expressed as a composition rather than hidden behind brick or render. This and the rooftop watertank, a curious architectural feature, has led to the building becoming known as 'Little Chicago'. Sources: The Builder, 29 March 1912, pp 375-7; Peter Collins, 'Concrete, the Vision of a New Architecture', 1959; David Cottam and Gavin Stamp, 'Sir E Owen Williams', 1986; Andrew Saint, 'Some Thoughts About the Architectural Use of Concrete', AA Files 21, 1991.

Listing NGR: TQ0935479607

Legacy

The contents of this record have been generated from a legacy data system.

Legacy System number:**468926**

Legacy System:**LBS**

Sources

Books and journals

Collins, P, Concrete the Vision of a New Architecture, (1959)

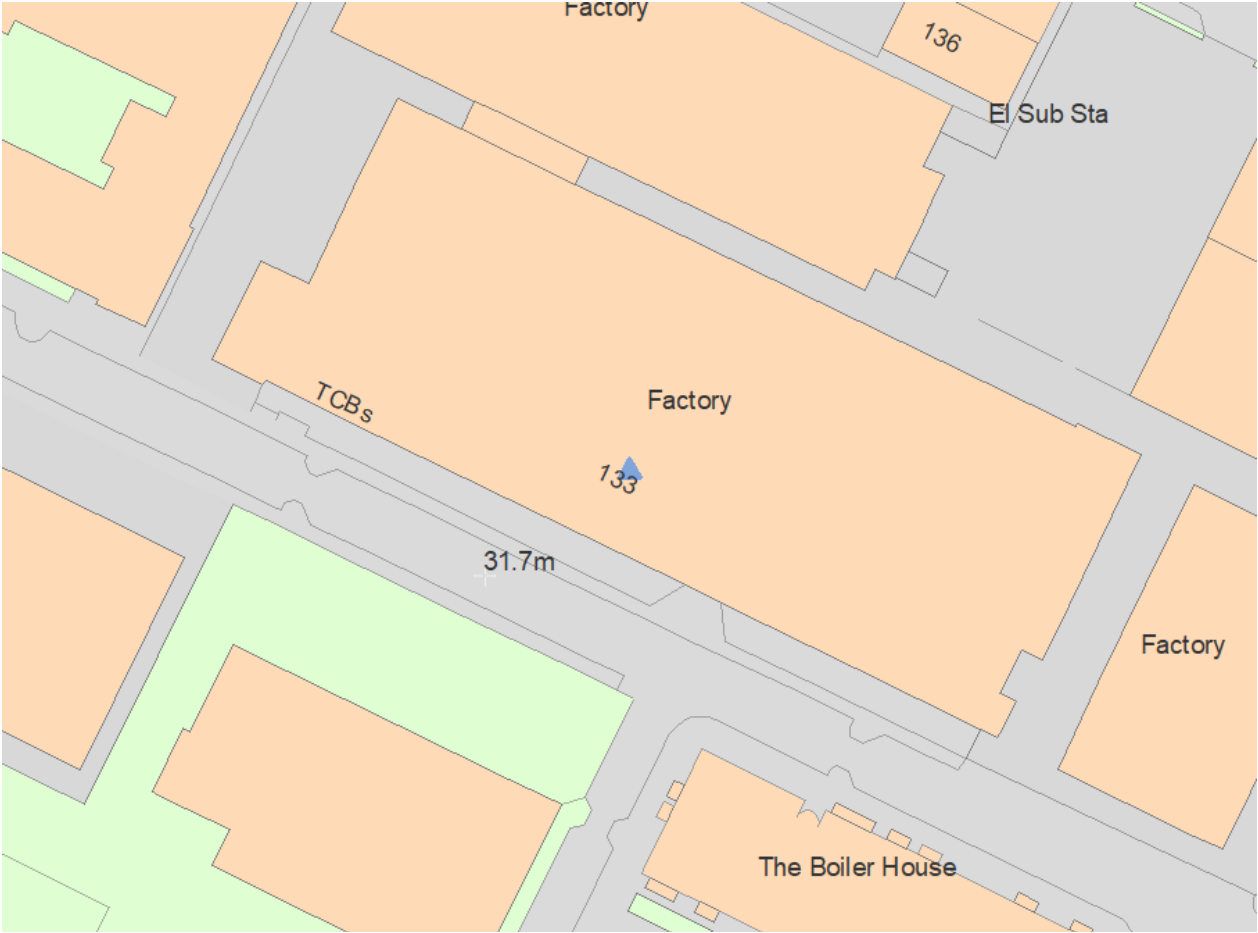
D, Cottam, G, Stamp (Ed), Sir Owen Williams 1890-1969, (1986)

'The Builder' in 29 March, (1912), 375-7

Saint, A, 'Architectural Association Files' in Some Thoughts About the Architectural Use of Concrete, (1991)

Legal

This building is listed under the Planning (Listed Buildings and Conservation Areas) Act 1990 as amended for its special architectural or historic interest.



Map

This map is for quick reference purposes only and may not be to scale. This copy shows the entry on 23-Jul-2025 at 13:11:20.

© Crown copyright [and database rights] 2025. OS AC0000815036. All rights reserved. Ordnance Survey Licence number 100024900.© British Crown and SeaZone Solutions Limited 2025. All rights reserved. Licence number 102006.006.

MONTAGU EVANS

**70 ST MARY AXE,
LONDON, EC3A 8BE**

TEL: +44 (0)20 7493 4002



WWW.MONTAGU-EVANS.CO.UK
LONDON | EDINBURGH | GLASGOW | MANCHESTER