

### Key Features:

Final size	= 12 x 8 metres in 20 years
Foliage	= Green leaves turn red in Autumn (deciduous)
Position	= Full sun to part shade in a sheltered site
Soil	= Prefers moist yet well draining soil

Acer rubrum is one of the most widespread trees of eastern and central North America but more than happy grown in a UK climate, tolerating most soil types and a wide array of planting conditions. An ideal specimen tree for a larger garden, this Red Maple will form a slightly pyramidal crown when young which becomes more rounded as it matures.

In 20 years you can expect an approx. height and spread of 12 x 8 metres.

AKA Red Maple, Canadian Maple, Scarlet Maple, Swamp Maple

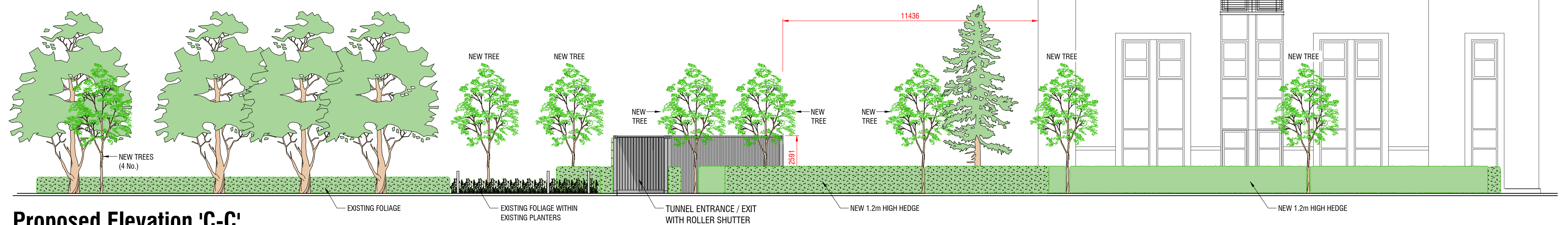
English Yew (*Taxus baccata*) is a classic choice for trough hedging, with a rich history of use in the grandest formal gardens across the UK. Known for its ability to be trimmed into crisp, clean lines and intricate shapes, this evergreen shrub offers unmatched versatility and elegance.

Taxus baccata can be maintained as a low hedge at 45-60 cm or allowed to reach heights of over 250 cm, all while retaining its dense, lush appearance. Regular trimming encourages a compact form, although if left untrimmed, English Yew will produce small flowers and distinctive red berries in the autumn.

This conifer is one of only three native to the UK and thrives in well-drained soils, particularly on chalk. While it can struggle in waterlogged conditions, it is otherwise highly adaptable, growing well in a wide range of soil types, from almost pure chalk to acidic, peaty soils.

English Yew adds a touch of timeless sophistication to any garden, offering a long-lasting and easy-to-maintain hedge that will continue to enhance your landscape for many years.

Recognised with an Award of Garden Merit by the Royal Horticultural Society in 1984, *Taxus baccata* is a top-tier choice for formal and traditional garden designs.



### Proposed Elevation 'C-C'



### Proposed Elevation 'D-D'

Scale 1:100

**To Be Read In Conjunction With Drawing MA6054-0-P005**

**Morgan Lovell**

MAXIS 1 Western Road Bracknell Berkshire RG12 1RT  
T: 0134 435 3800 E: [contact@morganlovell.com](mailto:contact@morganlovell.com)  
W: <http://www.morganlovell.com>

Client

**MONSTER ENERGY**

Project  
SWAN & MONSTER HOUSE, 6 & 7  
COWLEY BUSINESS PARK  
UXBRIDGE  
UB8 2AD

**1:100 @ A1 Original Size**

## PLANNING

Title  
**PROPOSED ELEVATIONS  
'C-C' & 'D-D'**

Scale 1:100@A1	Date 04/09/2025	Designer/Drawn By SMKB	Checked By / Date
Drawing Number			
Project No. <b>MA6054</b>	Floor <b>0</b>	Drawing No. <b>P008</b>	Rev <b>C</b>