

Proposed Materials:
(All materials to match existing)

Walls:

Brickwork: Multi yellow, Natural coloured mortar

Cladding: Composite metal cladding panel with pre-formed corners, horizontally laid, secret fixed, finish/colour: RAL 9006

Windows and doors:

Aluminium framed curtain walling double glazed system. Frame colour: Anthracite (RAL 7016)

Aluminium framed curtain walling glazing system with graphite grey annealed glass spandrel panel, insulation backed with aluminium curtain framed system. Frame colour: Anthracite (RAL 7016)

Single / Double leaf manual doors and mechanical sliding doors, double glazed - framing colour: Anthracite (RAL 7016)

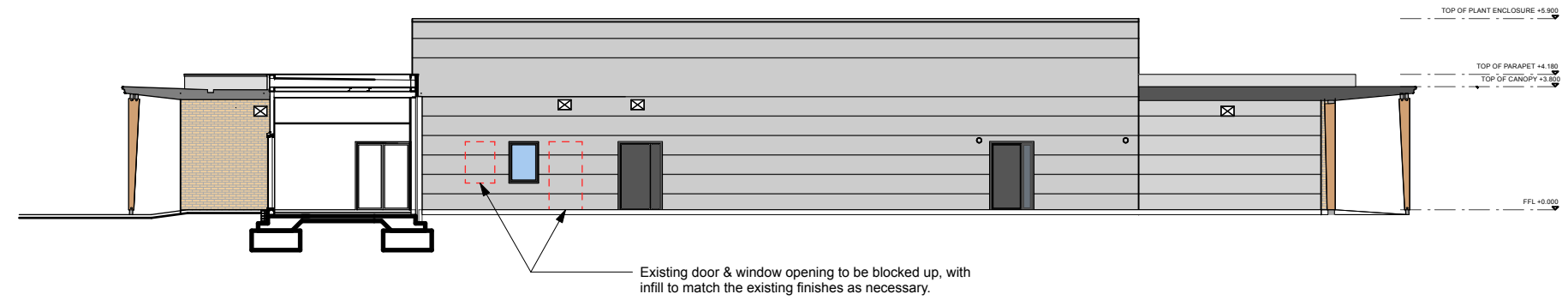
Roof:

Flat Roof: Single ply membrane finish

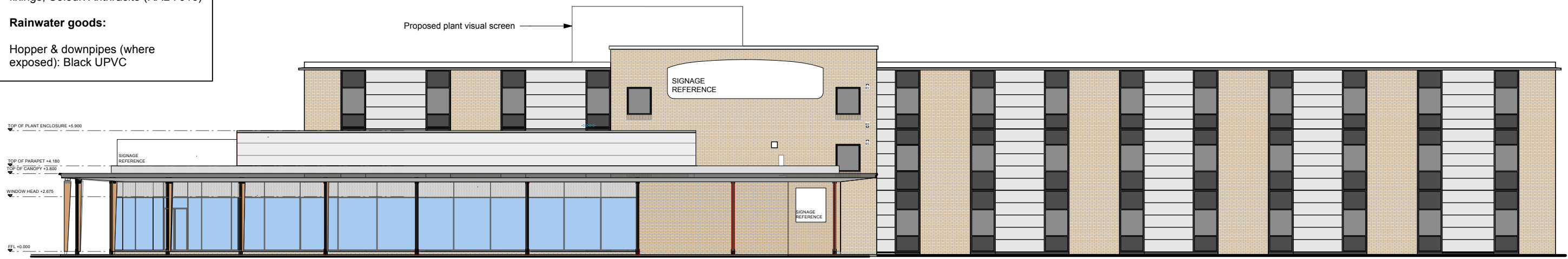
Fascias: Polyester powder coated metal fascia and soffit with concealed fixings; Colour: Anthracite (RAL 7016)

Rainwater goods:

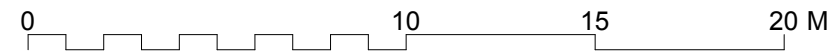
Hopper & downpipes (where exposed): Black UPVC



1 Proposed South Elevation(courtyard)
 Scale: 1:200



2 Proposed North Elevation(Riverside Way View)
 Scale: 1:200



Rev Date Description By Chk

Addlepool Business Centre
 Clyst St George
 Exeter. EX3 0NR
 Tel. 01392 368426
 www.axiomarchitects.co.uk

AXIOM ARCHITECTS

Client
 WHITBREAD GROUP PLC

Project
 PREMIER INN LONDON UXBRIDGE
 500 RIVERSIDE WAY
 UXBRIDGE, UB8 2YF

Drawing
 Proposed Elevations
 Sheet 3

Scale	Date	Drawn	Checked
1:200@A3	05/12/25	SC	RW

Drawing No. Revision

6505-PL- 212

Status
 PLANNING