

**Proposed Materials:**  
**(All materials to match existing)**

**Walls:**

Brickwork: Multi yellow, Natural coloured mortar

Cladding: Composite metal cladding panel with pre-formed corners, horizontally laid, secret fixed, finish/colour: RAL 9006

**Windows and doors:**

Aluminium framed curtain walling double glazed system. Frame colour: Anthracite (RAL 7016)

Aluminium framed curtain walling glazing system with graphite grey annealed glass spandrel panel, insulation backed with aluminium curtain framed system. Frame colour: Anthracite (RAL 7016)

Single / Double leaf manual doors and mechanical sliding doors, double glazed - framing colour: Anthracite (RAL 7016)

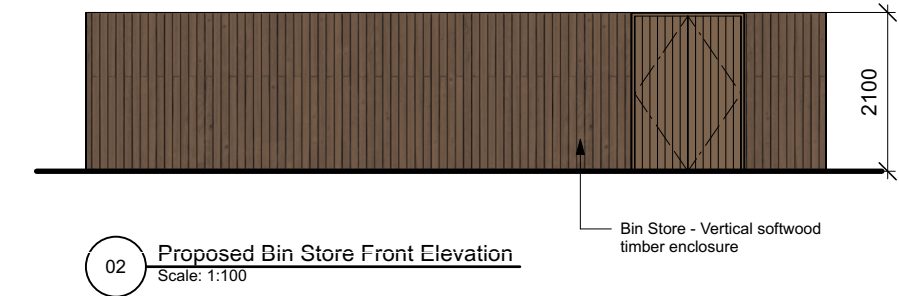
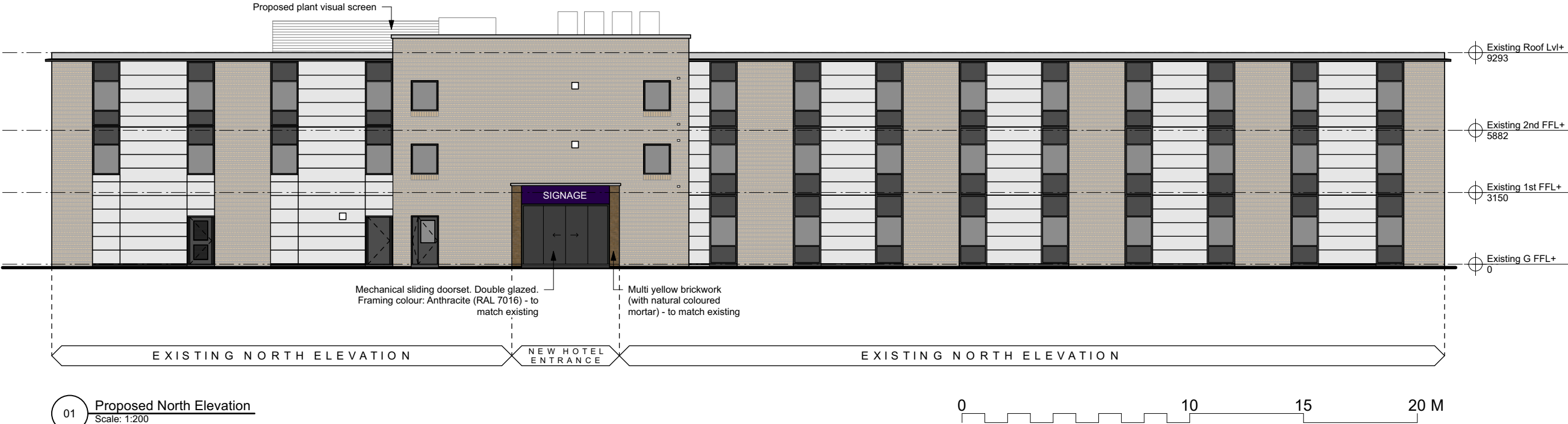
**Roof:**

Flat Roof: Single ply membrane finish

Fasias: Polyester powder coated metal fascia and soffit with concealed fixings; Colour: Anthracite (RAL 7016)

**Rainwater goods:**

Hopper & downpipes (where exposed): Black UPVC



A	23/09/24	Design update	AW	AB
Rev	Date	Description	By	Chk

**AXIOM ARCHITECTS**

1 Brooklands Yard Southover High Street Lewes East Sussex BN7 1HU  
Tel. 01273 479434 www.axiomarchitects.co.uk

Client  
**WHITBREAD GROUP PLC**

Project  
PREMIER INN LONDON UXBRIDGE  
500 RIVERSIDE WAY  
UXBRIDGE, UB8 2YF

Drawing  
**Proposed Elevations (Sheet 2)**

Scale	Date	Drawn	Checked
Varies@A3	02/09/24	AW	AB
Drawing No.	Revision		
6262-P-	211	A	
Status	PLANNING		