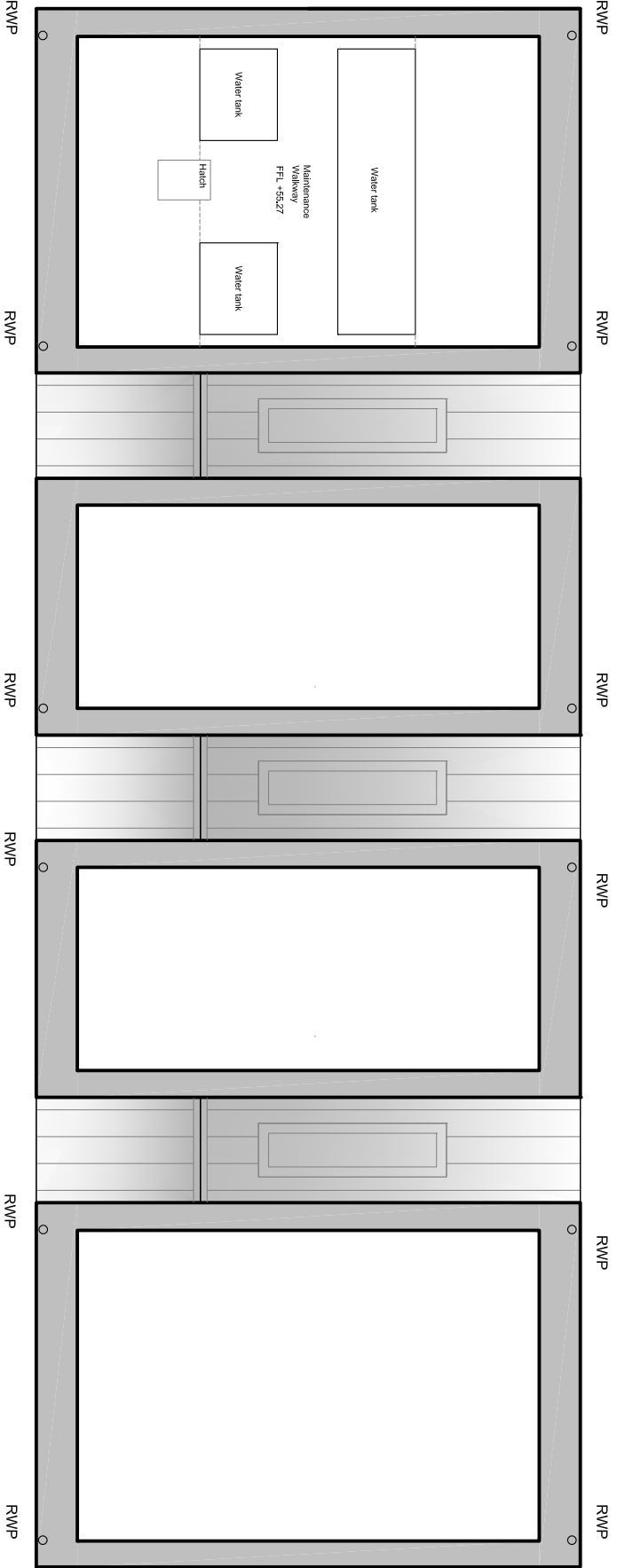


Rev.	Date	By	Check	Appr.	Description
A	21.08.24	LH	NM	CB	Issued for planning
B	14.01.25	ML	LH	CB	Issued for response to planning comments

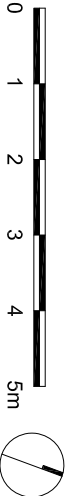
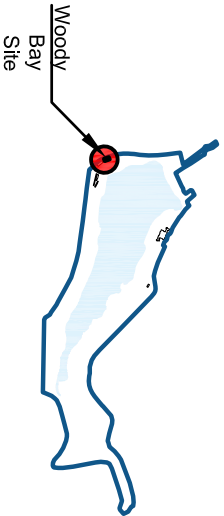
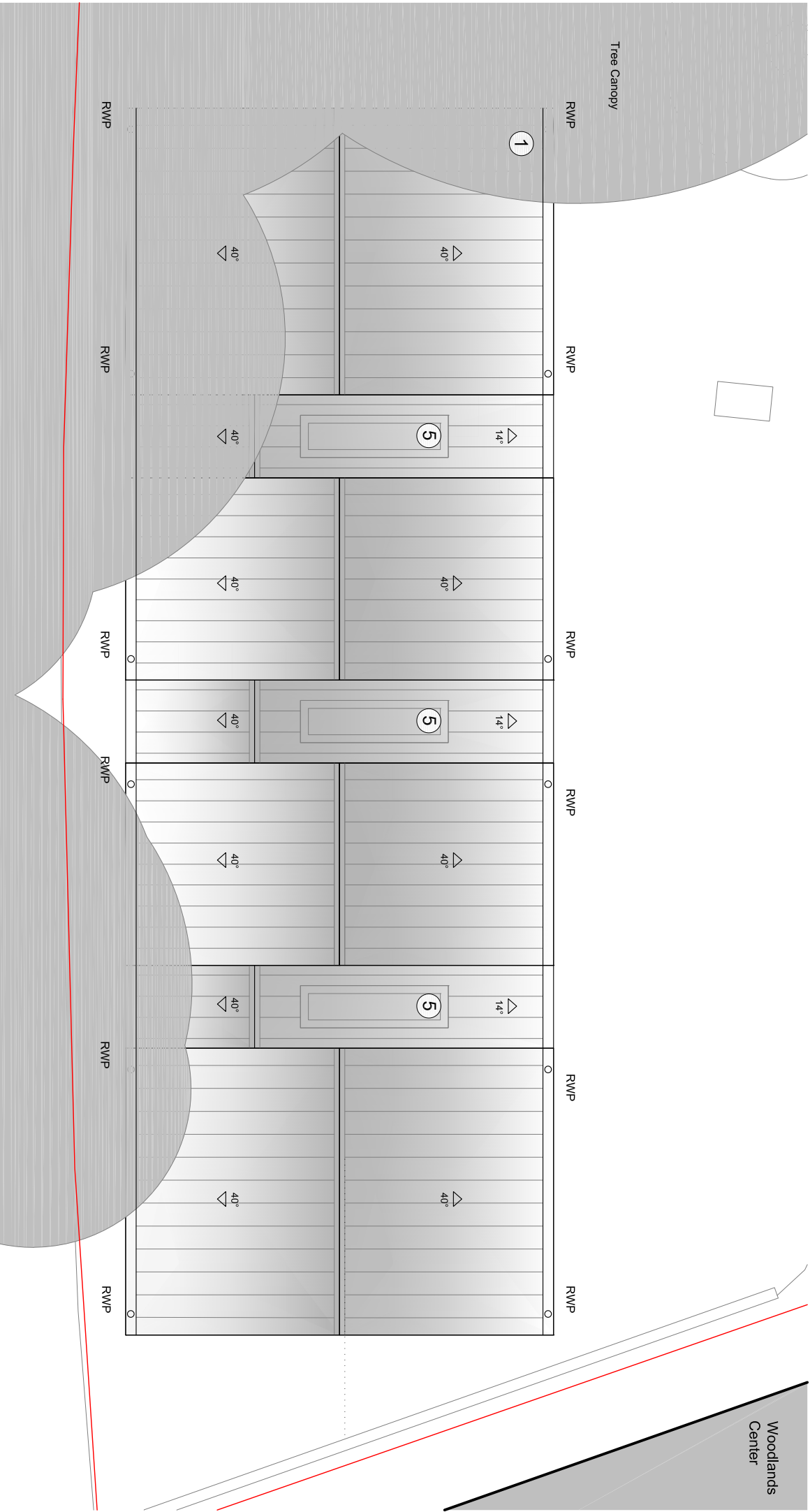
— Site boundary

Material Key

- 1 Standing Seam Zinc
- 2 Steel Doors
- 3 Louvered Doors
- 4 Buff Brick
- 5 Aluminium Rooflight
- 6 Zinc Gutter and Downpipe
- 7 Glass Block
- RWP Rainwater Pipe



First Floor Plan



Issued for planning
Scale: 1:100
Client: Hillingdon Council
Job Title: Ruislip Lido
Drawing Title: Woody Bay Proposed GF and Roof Plan
Job/Dwg No/Rev: 1326 P1003 B
Drawn: LH
Checked: CB
Date: 21.08.2024
Drawing status: Planning
21.08.2024
11:00@A3

Roof Plan