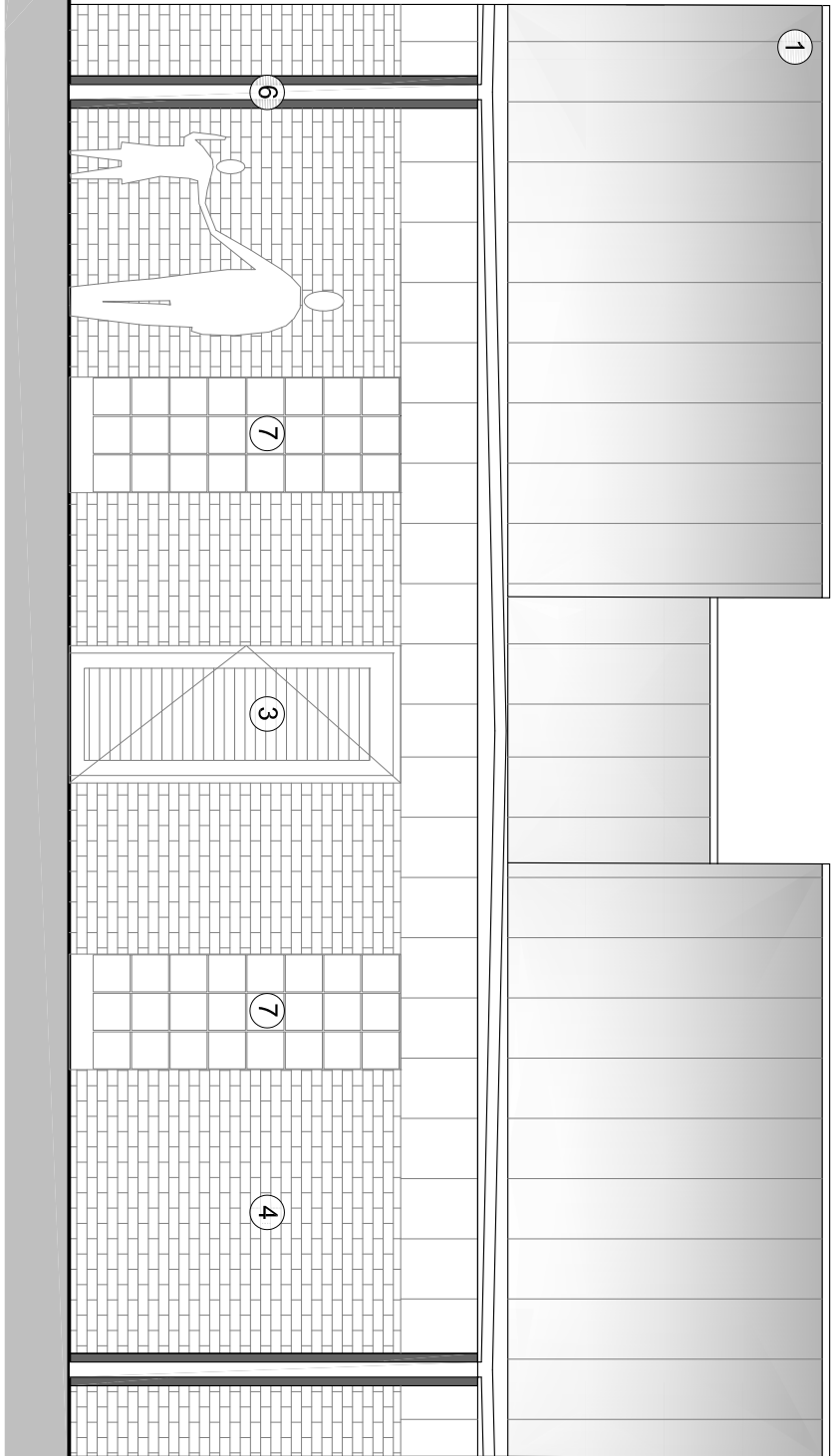
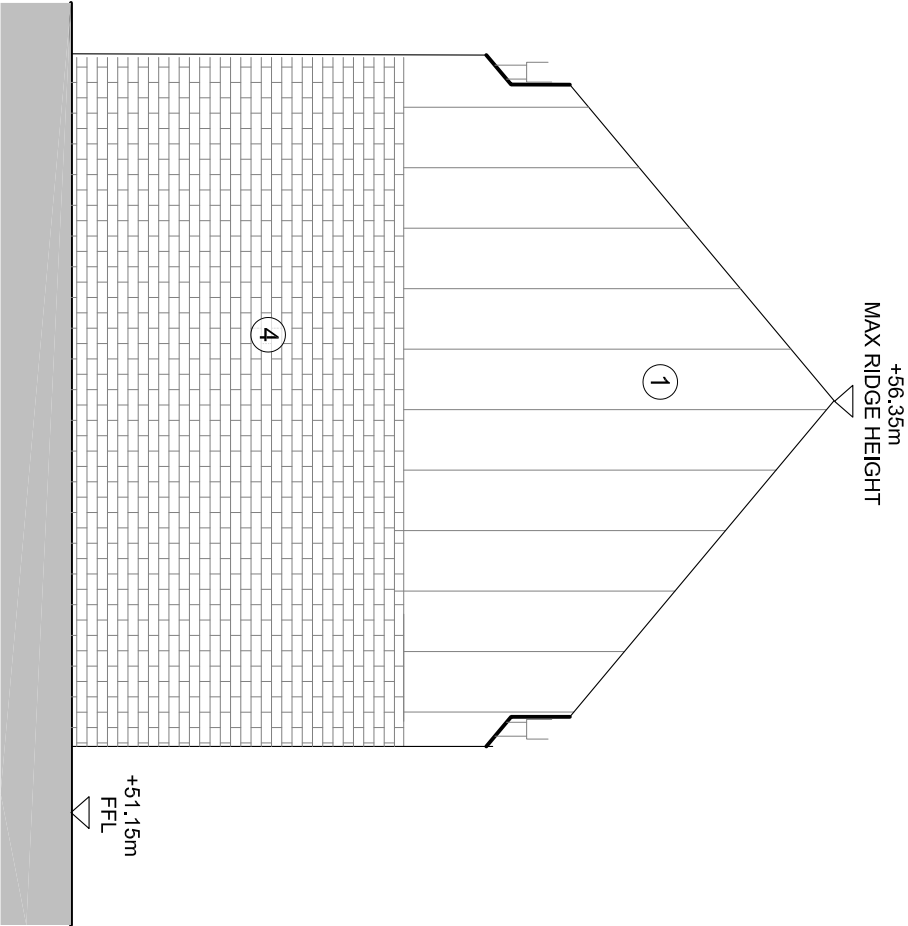


| Rev. | Date | By | Check | Appr. | Description |
|------|------------|----|-------|-------|--|
| A | 21.08.2024 | LH | NM | CB | Issued for planning |
| B | 14.01.2025 | ML | LH | CB | Issued for response to planning comments |

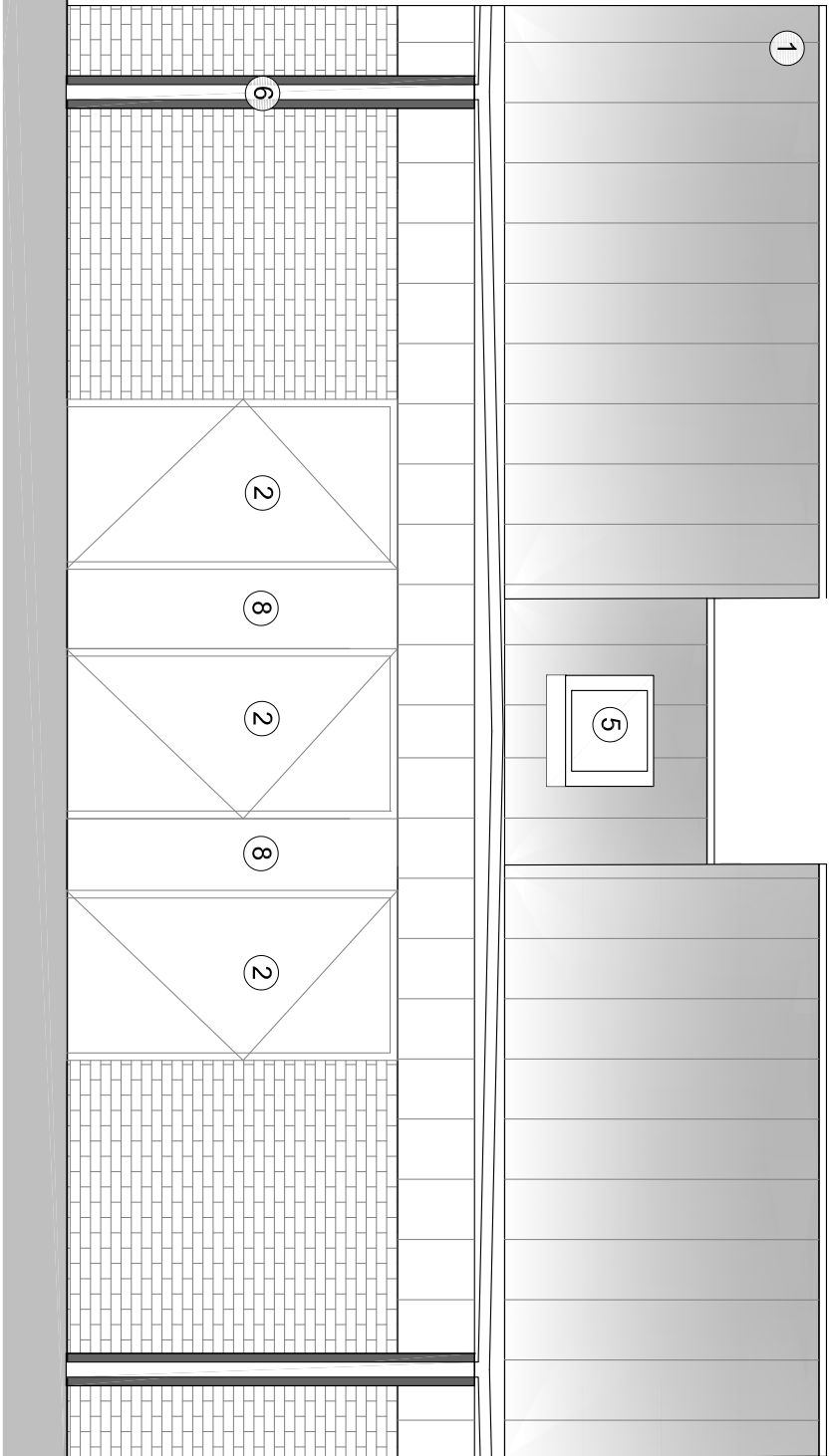
- Material Key
- 1 Standing Seam Zinc
 - 2 Steel Doors
 - 3 Louvred Doors
 - 4 Buff Brick
 - 5 Aluminium Rooflight
 - 6 Zinc Gutter and Downpipe
 - 7 Glass Block
 - 8 PPC Aluminium Panel with Signage



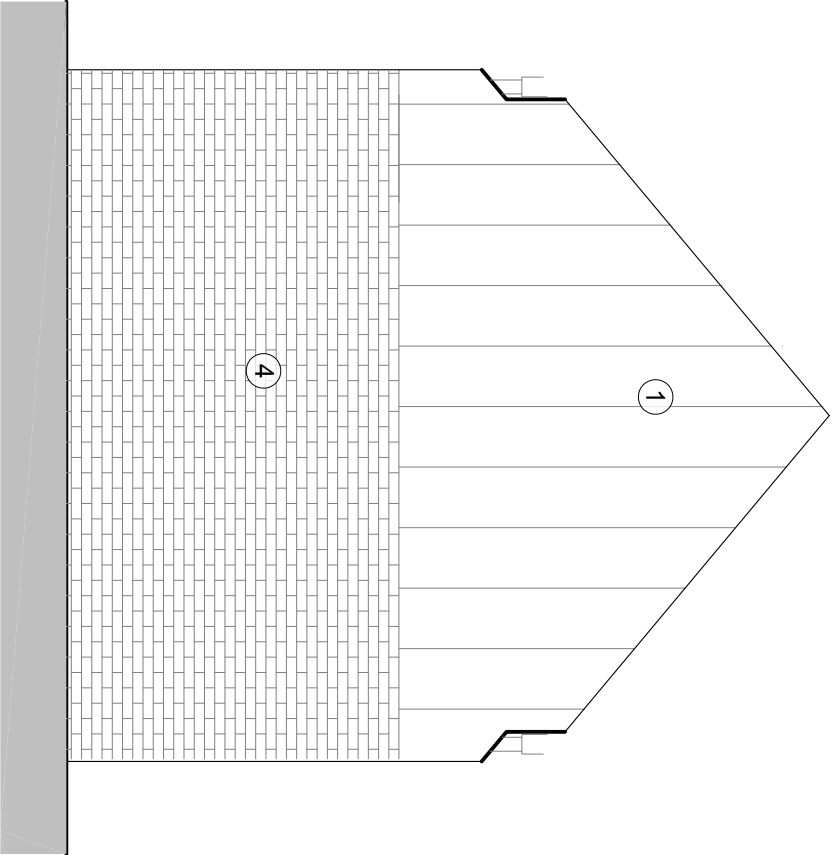
1 West Facing Elevation



2 South Facing Elevation



3 East Facing Elevation



2 North Facing Elevation



Hillingdon Council
Planning Department
020 8996 1000
www.hillingdon.gov.uk

Client:
Hillingdon Council

Job Title:
Ruislip Lido

Drawing Title:
Willow Lawn Proposed Elevation

Job/Dwg No/Rev: 1326 P2050 B

Drawn: LH **Checked:** CB **Appr:** CB **Date:** 21.08.2024

Drawing Status: Planning **Check all dimensions are as site** **Scale:** 1:50@A3