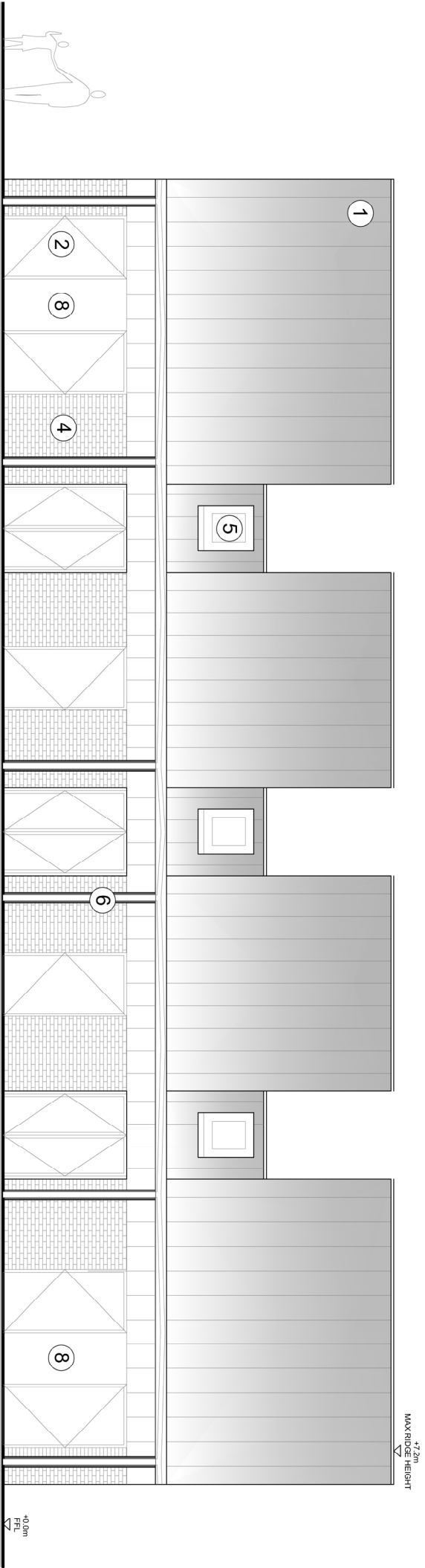
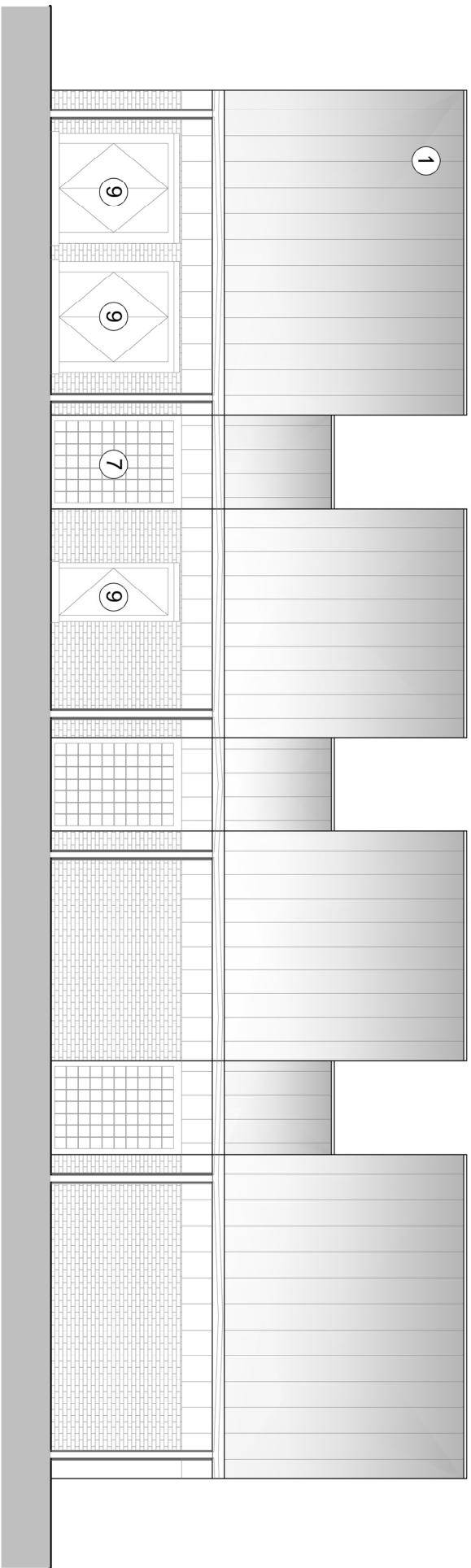


Rev.	Date	By	Check	Appr.	Description
A	21.08.24	LH	AM	CB	Issued for planning
B	18.09.24	LH	AM	CB	GRP Enclosures added

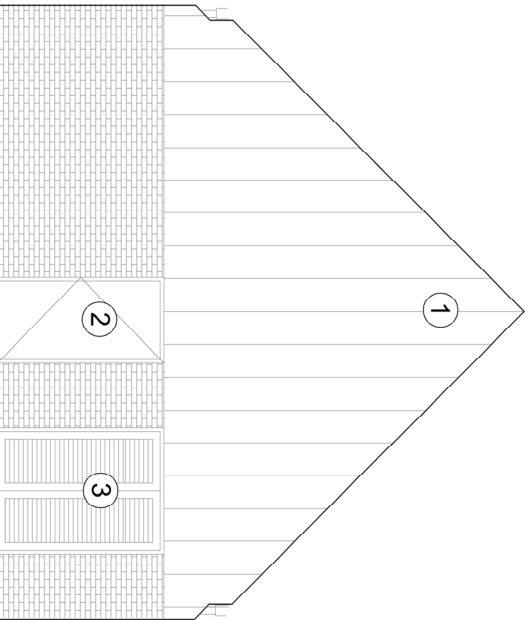
- Material Key**
- 1 Standing Seam Zinc
 - 2 Steel Doors
 - 3 Louvered Doors
 - 4 Buff Brick
 - 5 Aluminium Rooflight
 - 6 Zinc Gutter and Downpipe
 - 7 Glass Block
 - 8 PPC Aluminium Panel with Signage
 - 9 GRP Enclosure



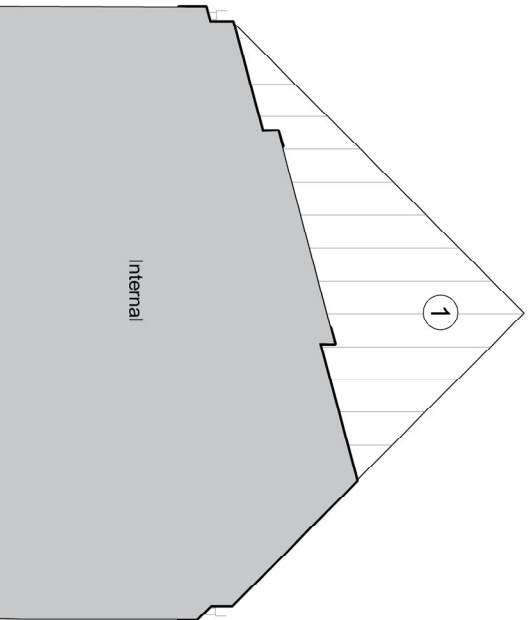
1 North Facing Elevation



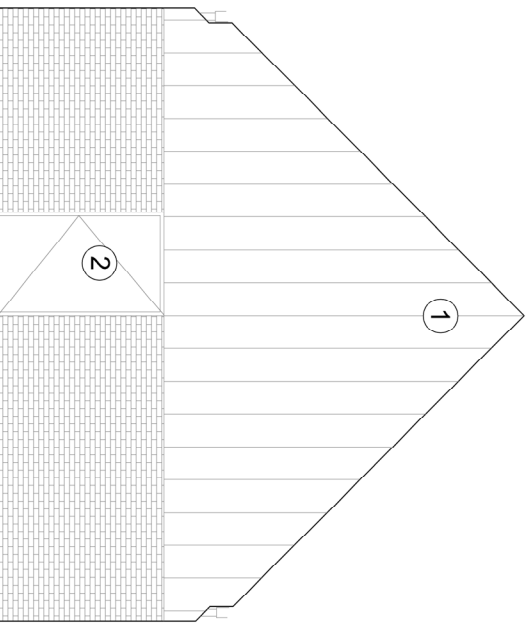
2 South Facing Elevation



3 West Facing Elevation



4 Gable End Between Rooves



5 East Facing Elevation



Haverstock LLP
Studio 10 Cliff Road Studios
Cliff Road, London NW1 5AN
Tel: +44 (0)20 7267 7576
info@haverstock.com
www.haverstock.com

Client:
Hillingdon Council

Job Title:
Ruislip Lido

Drawing Title:
Woody Bay Proposed Elevation

Job/Dwg No/Rev: 1326 P2001 B

Drawn: LH **Checked:** CB **Appr:** CB **Date:** 21.08.2024

Drawing status: Planning
21.08.2024
before ordering. Check all dimensions on site

Scale: 1:100@A3