



Revisions:

Uxbridge

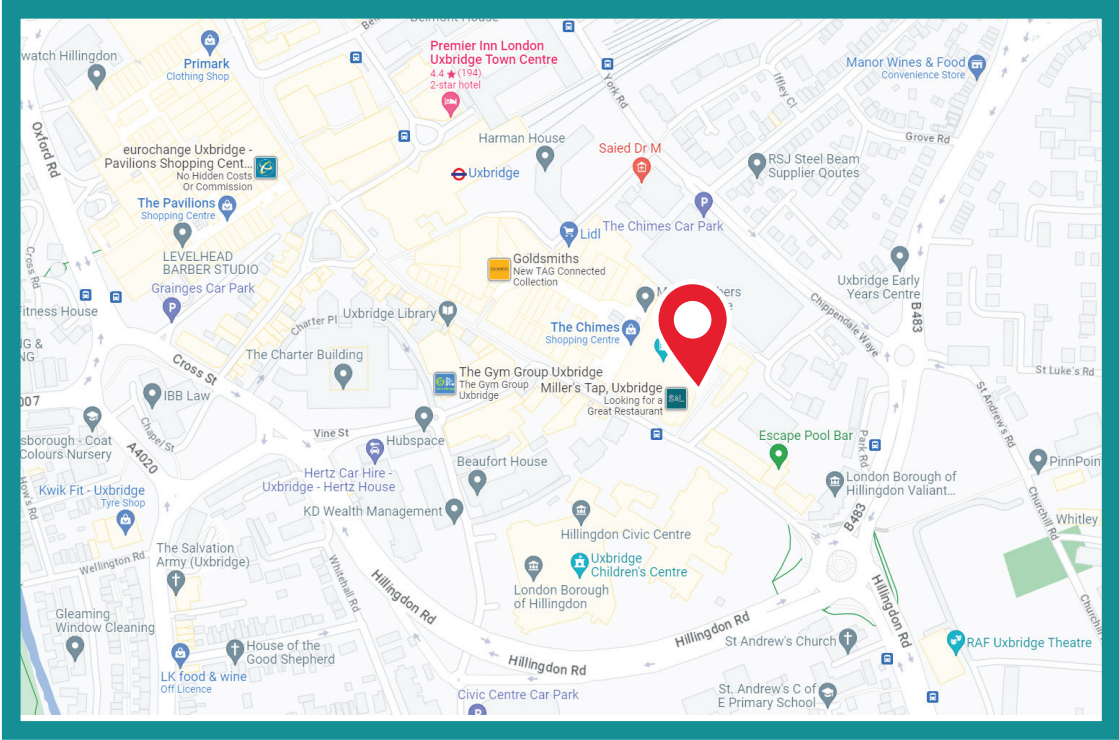
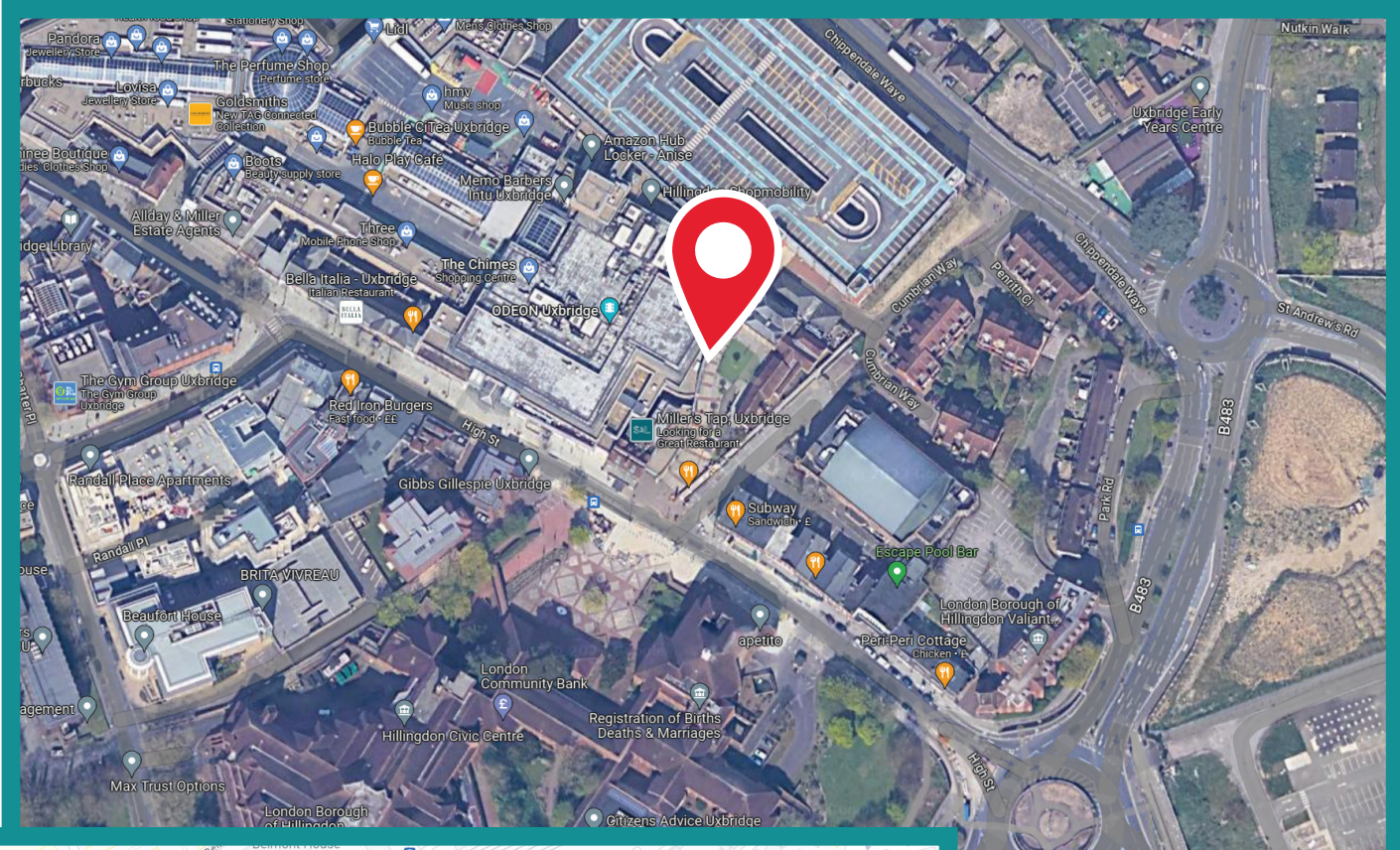
External Signage Proposal

Planning Issue 03 - 09/09/24

The Chimes Shopping Centre
High St,
Uxbridge
UB8 1GA



Puregym Uxbridge - Planning
Location



Site
PureGym
Uxbridge, The Chimes,
High St, Uxbridge UB8 1GA

Job Number
00000A
Drawing Location

Page
2

Scale
as shown @ A3
Issue / Rev
Planning Issue 03

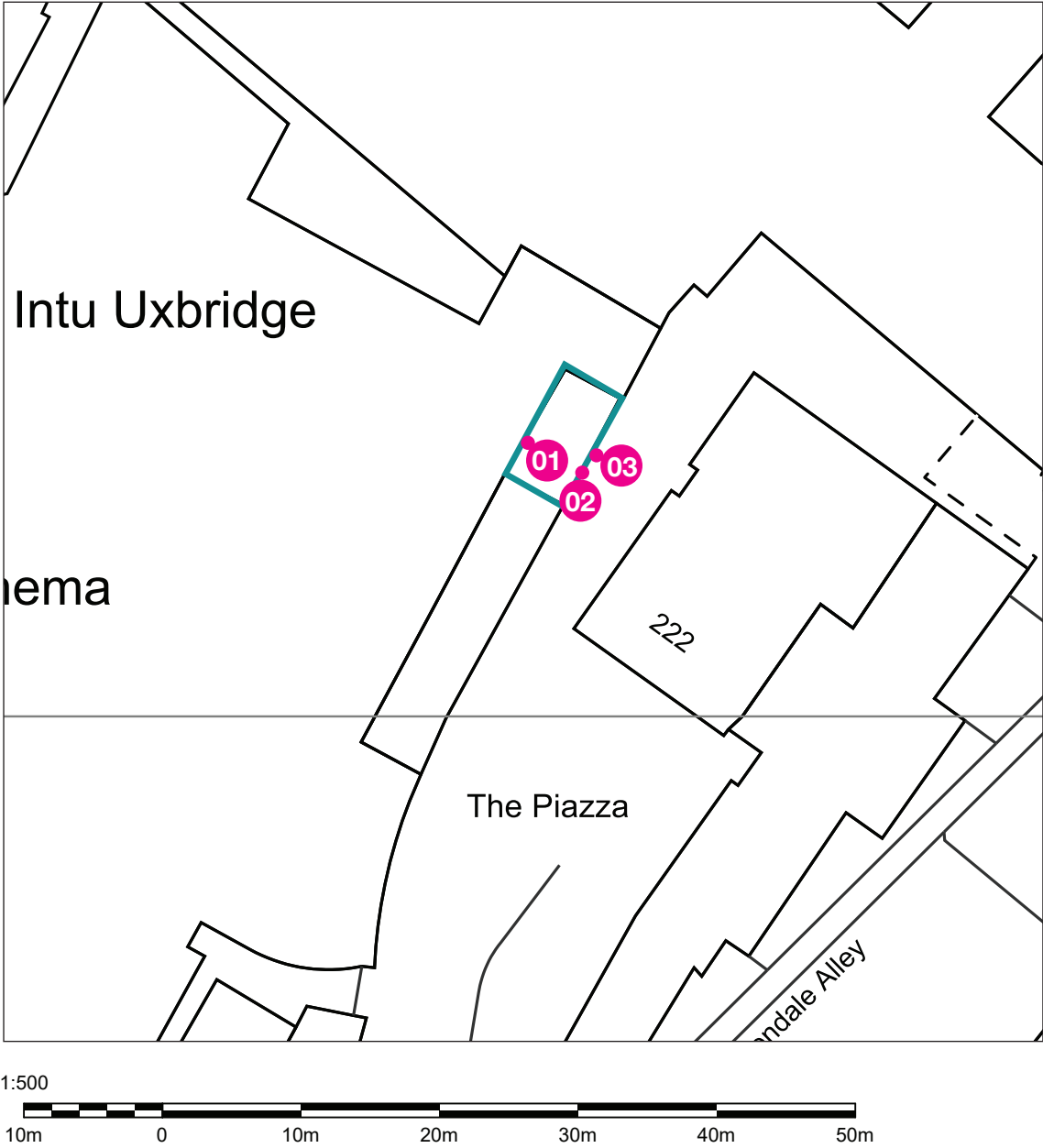
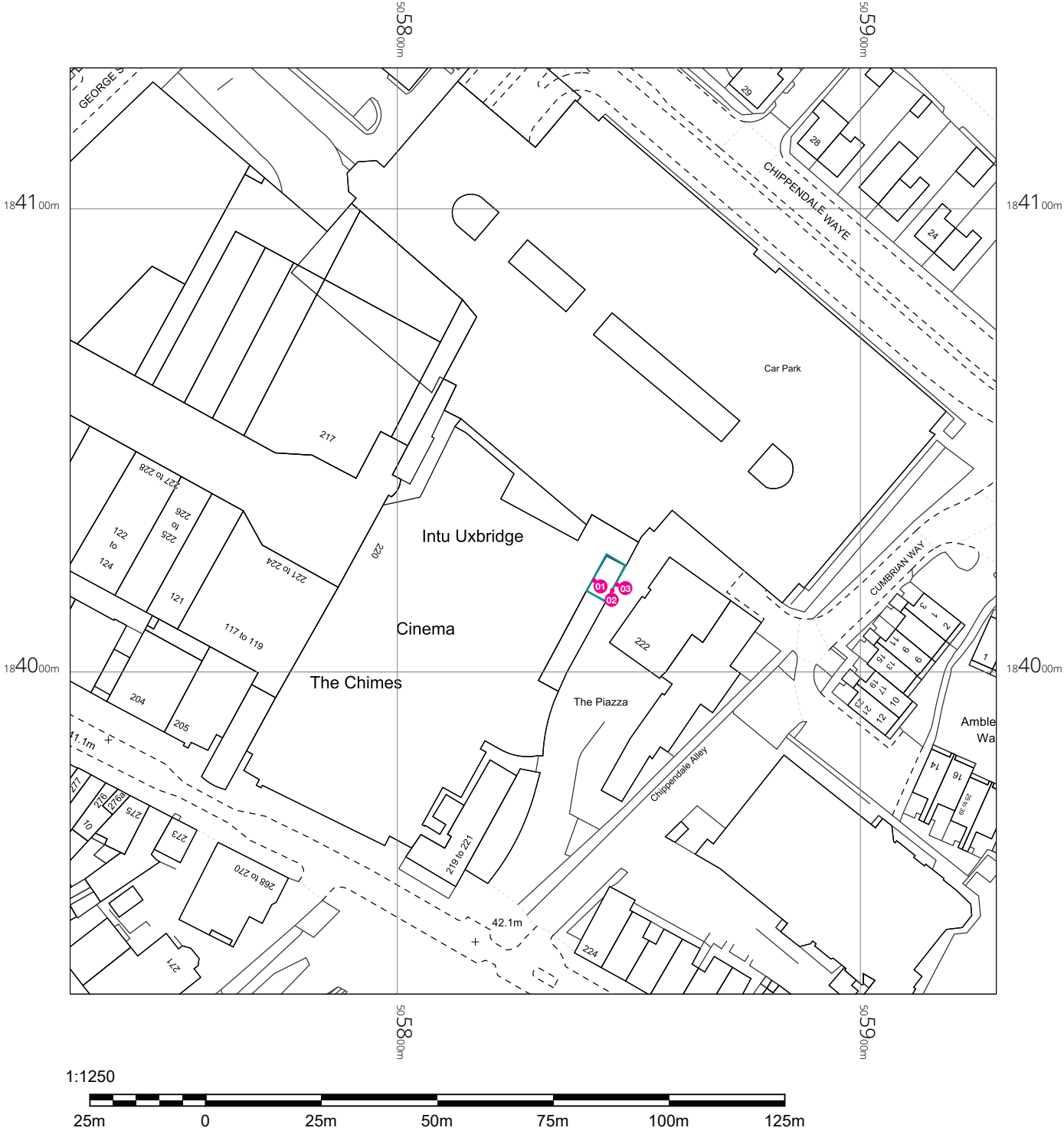
Drawn by
JS
Checked by

Sales Rep
MK
Date
09/09/2024



BUTTERFIELD SIGNS LTD
174 Sunbridge Rd
Bradford West Yorkshire
BD1 2RZ
Tel: 01274 722244
Fax: 01274 848996
Web: www.butterfieldsigns.co.uk

Puregym Uxbridge - Planning
Site Plan



Site
PureGym
Uxbridge, The Chimes,
High St, Uxbridge UB8 1GA

Job Number
00000A
Drawing Location

Page
3

Scale
as shown @ A3
Issue / Rev
IPlanning Issue 03

Drawn by
JS
Checked by

Sales Rep
MK
Date
09/09/2024



BUTTERFIELD SIGNS LTD
174 Sunbridge Rd
Bradford West Yorkshire
BD1 2RZ
Tel: 01274 722244
Fax: 01274 848996
Web: www.butterfieldsigns.co.uk

Main Entrance Signage

Item 01 - Entrance Portal / Shroud

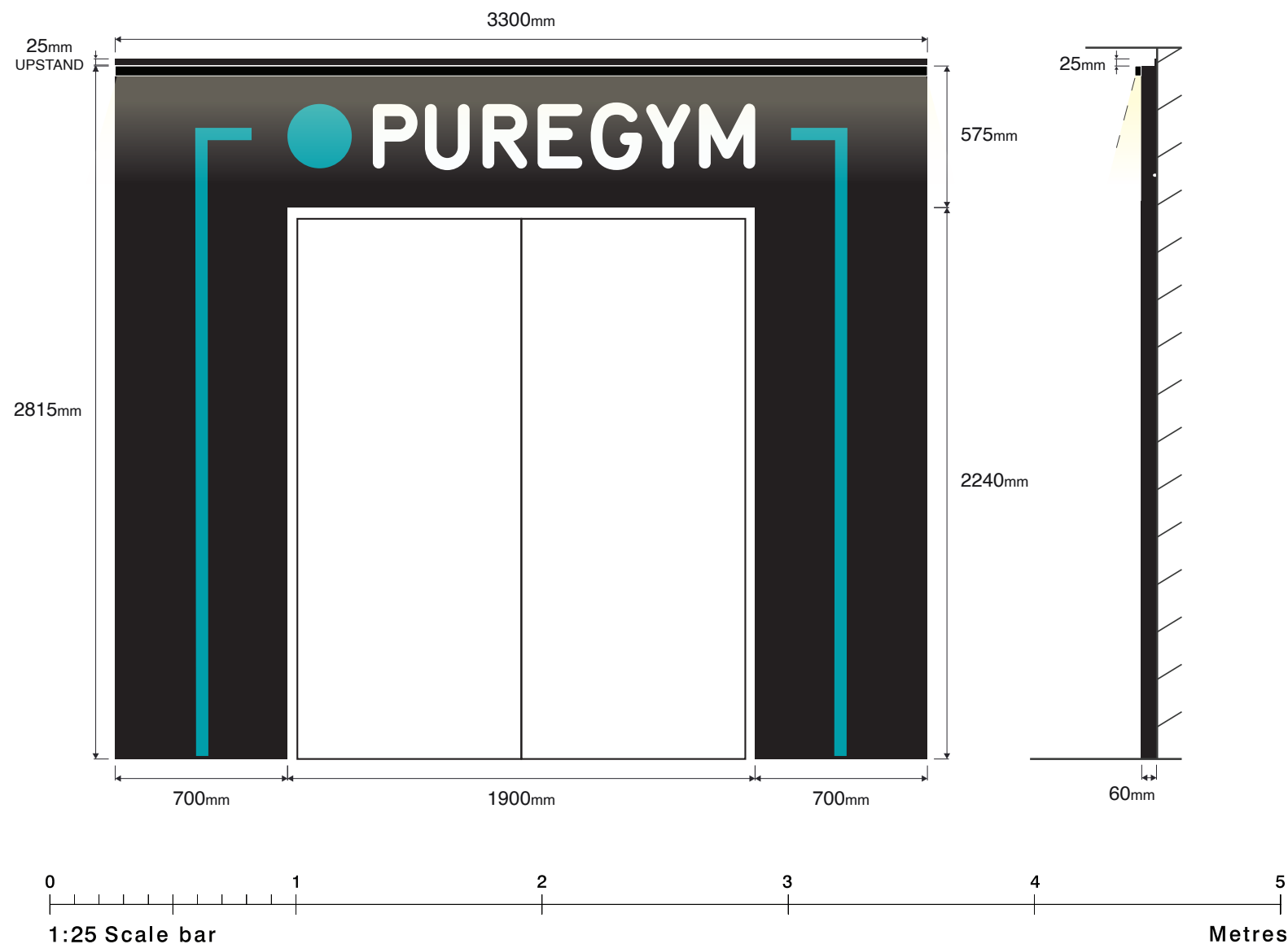
1No. Folded aluminium tray shroud, 60mm deep, full back tray, no inner returns, finished RAL 9005 satin.

Top of panel to feature plotted vinyl logo, and slimline trough downlight comprising of aluminium channel powdercoated RAL 9005 black to match, with LED illumination in channel casting light down face of tray

Columns to feature teal Oracal 551 Water Blue vinyl detail line down either column

25mm upstand for fixing back to wall at top

Size: 3300x2815mm
Scale 1:25



Puregym Uxbridge - Planning



CUT-OUT ON PANEL SIDES
TO ALLOW CONDUIT TO
RUN THROUGH

Visual



Signage illumination does not exceed 500 CD/M²



Site
PureGym
Uxbridge, The Chimes,
High St, Uxbridge UB8 1GA

Job Number
00000A
Drawing Location

Page
4

Scale
as shown @ A3
Issue / Rev
Planning Issue 03

Drawn by
JS
Checked by

Sales Rep
MK
Date
09/09/2024



BUTTERFIELD SIGNS LTD
174 Sunbridge Rd
Bradford West Yorkshire
BD1 2RZ
Tel: 01274 722244
Fax: 01274 848996
Web: www.butterfieldsigns.co.uk

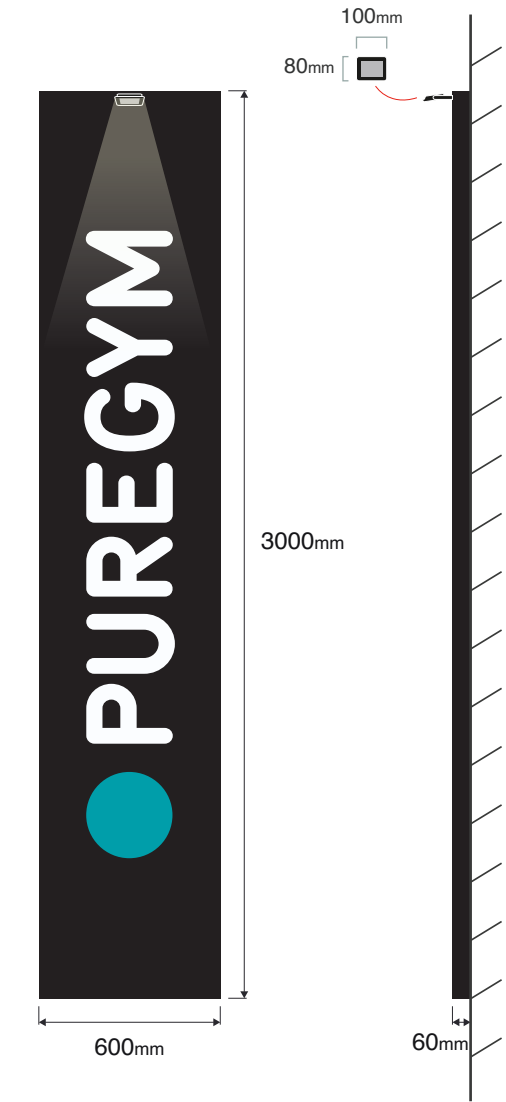
Outer Entrance / Columns Signage

Item 02 - Outer Entrance Sign

1No. Folded aluminium tray, 60mm deep, full backtray fixed to inside of column finished RAL 9005 satin.

To feature plotted vinyl logo, and small 10w LED spotlight fixed to top of tray, casting light down face of tray

Size: 600x3000mm
Scale 1:25
HEIGHT ABOVE GROUND: 250mm



SMOKING BIN TO BE MOVED TO ALTERNATE LOCATION TO ALLOW INSTALL



Item 03 - PJ05 Projecting Sign

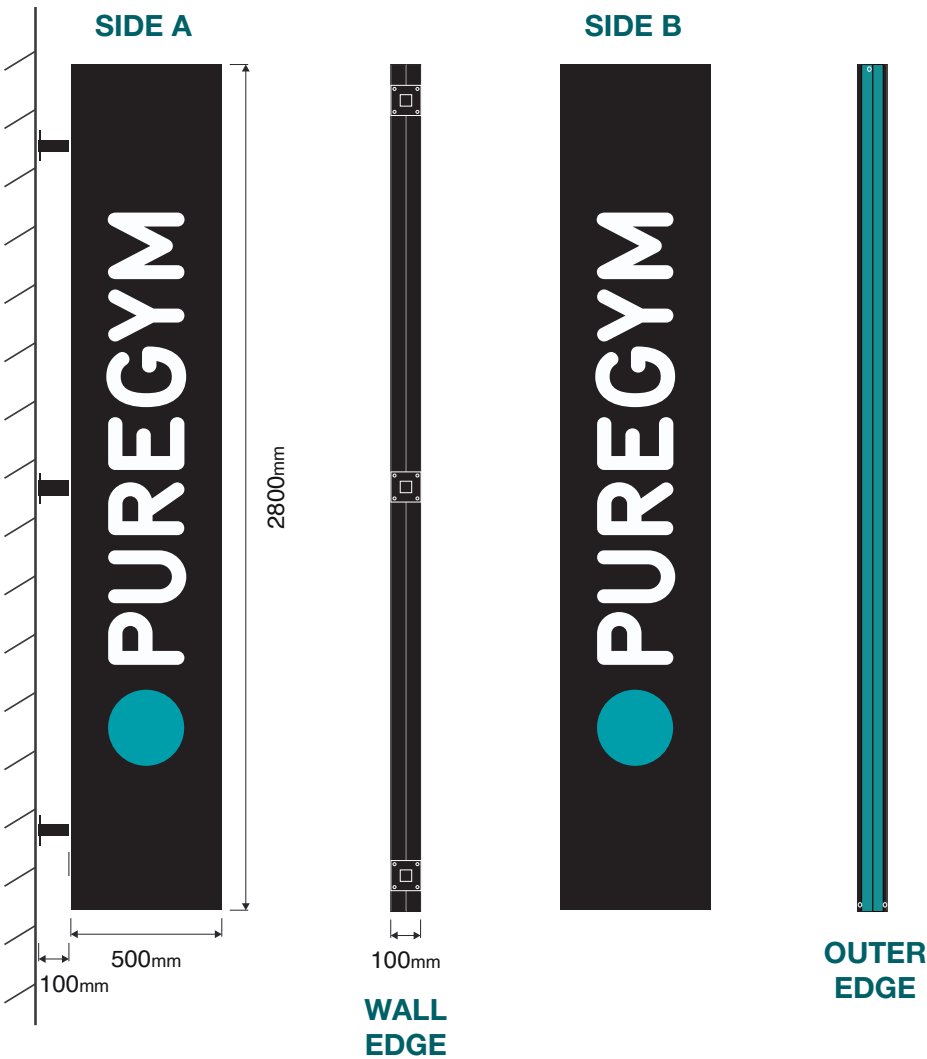
1No. Folded 3mm aluminium panels with 50mm deep returns, fitted back to back to an internal frame. Panels & frame Powder coated RAL 9005 (Satin). Vinyl lettering to face on either side

Perimeter of sign to have Oracal 551 Water Blue vinyl wrapping outer returns to give teal edge to sign.

Internal frame work to be constructed from 38 x 38 x 3mm box section & folded 3mm aluminium frame c\w 1no. 6mm aluminium wall plate.

Illuminated from above via existing floodlight.

Size: 500x2800mm
Scale 1:25
HEIGHT ABOVE GROUND: 3600mm



Signage illumination does not exceed 500 CD/M²



Site
PureGym
Uxbridge, The Chimes,
High St, Uxbridge UB8 1GA

Job Number
00000A
Drawing Location

Page
5

Scale
as shown @ A3
Issue / Rev
Planning Issue 03

Drawn by
JS
Checked by

Sales Rep
MK
Date
09/09/2024



BUTTERFIELD SIGNS LTD
174 Sunbridge Rd
Bradford West Yorkshire
BD1 2RZ
Tel: 01274 722244
Fax: 01274 848996
Web: www.butterfieldsigns.co.uk



Site
PureGym
Uxbridge, The Chimes,
High St, Uxbridge UB8 1GA

Job Number
00000A
Drawing Location

Page
6

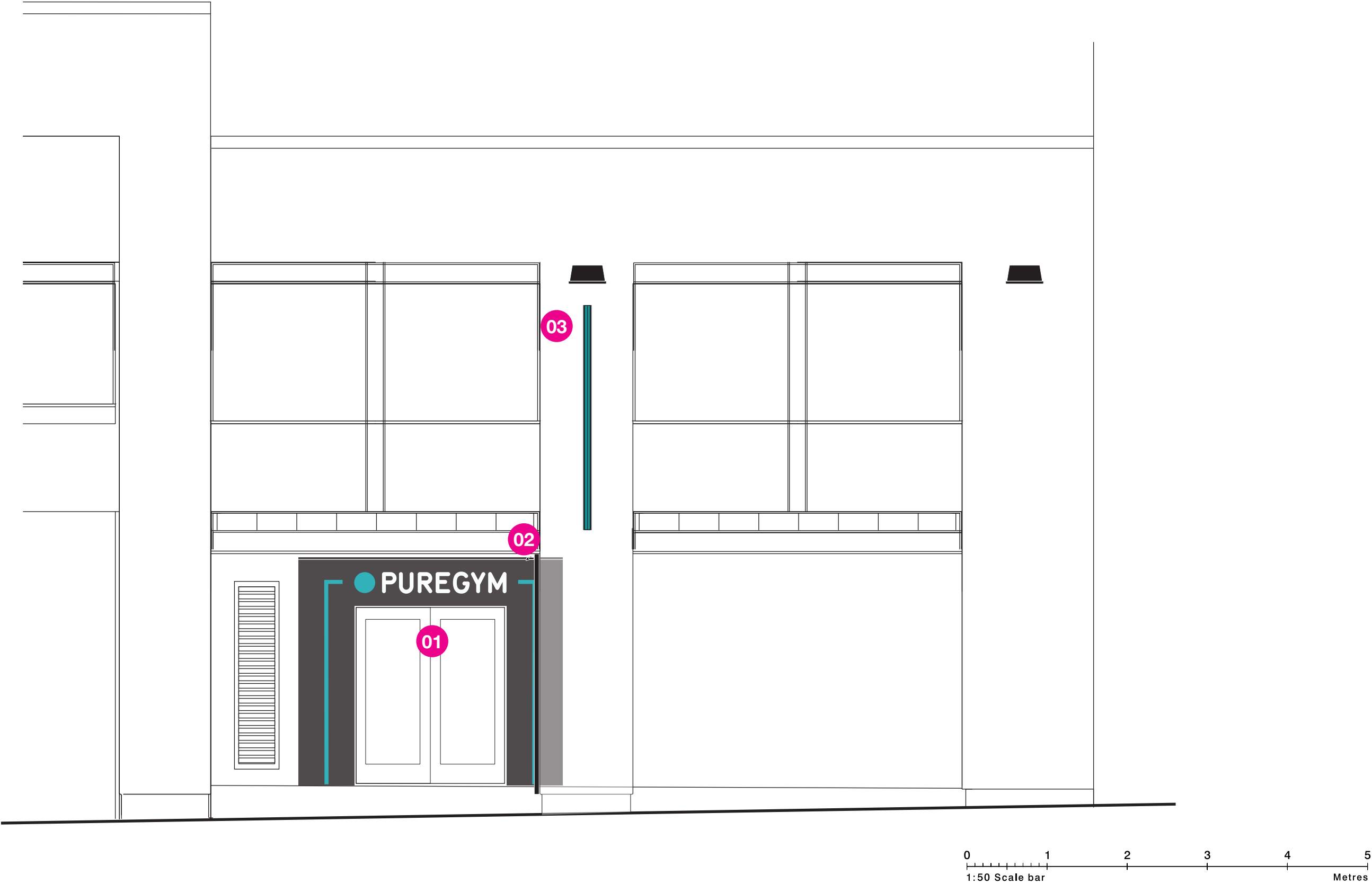
Scale
as shown @ A3
Issue / Rev
Planning Issue 03

Drawn by
JS
Checked by

Sales Rep
MK
Date
09/09/2024



BUTTERFIELD SIGNS LTD
174 Sunbridge Rd
Bradford West Yorkshire
BD1 2RZ
Tel: 01274 722244
Fax: 01274 848996
Web: www.butterfieldsigns.co.uk



Site
PureGym
Uxbridge, The Chimes,
High St, Uxbridge UB8 1GA

Job Number
00000A
Drawing Location

Page
7

Scale
as shown @ A3
Issue / Rev
Planning Issue 03

Drawn by
JS
Checked by

Sales Rep
MK
Date
09/09/2024



BUTTERFIELD SIGNS LTD
174 Sunbridge Rd
Bradford West Yorkshire
BD1 2RZ
Tel: 01274 722244
Fax: 01274 848996
Web: www.butterfieldsigns.co.uk