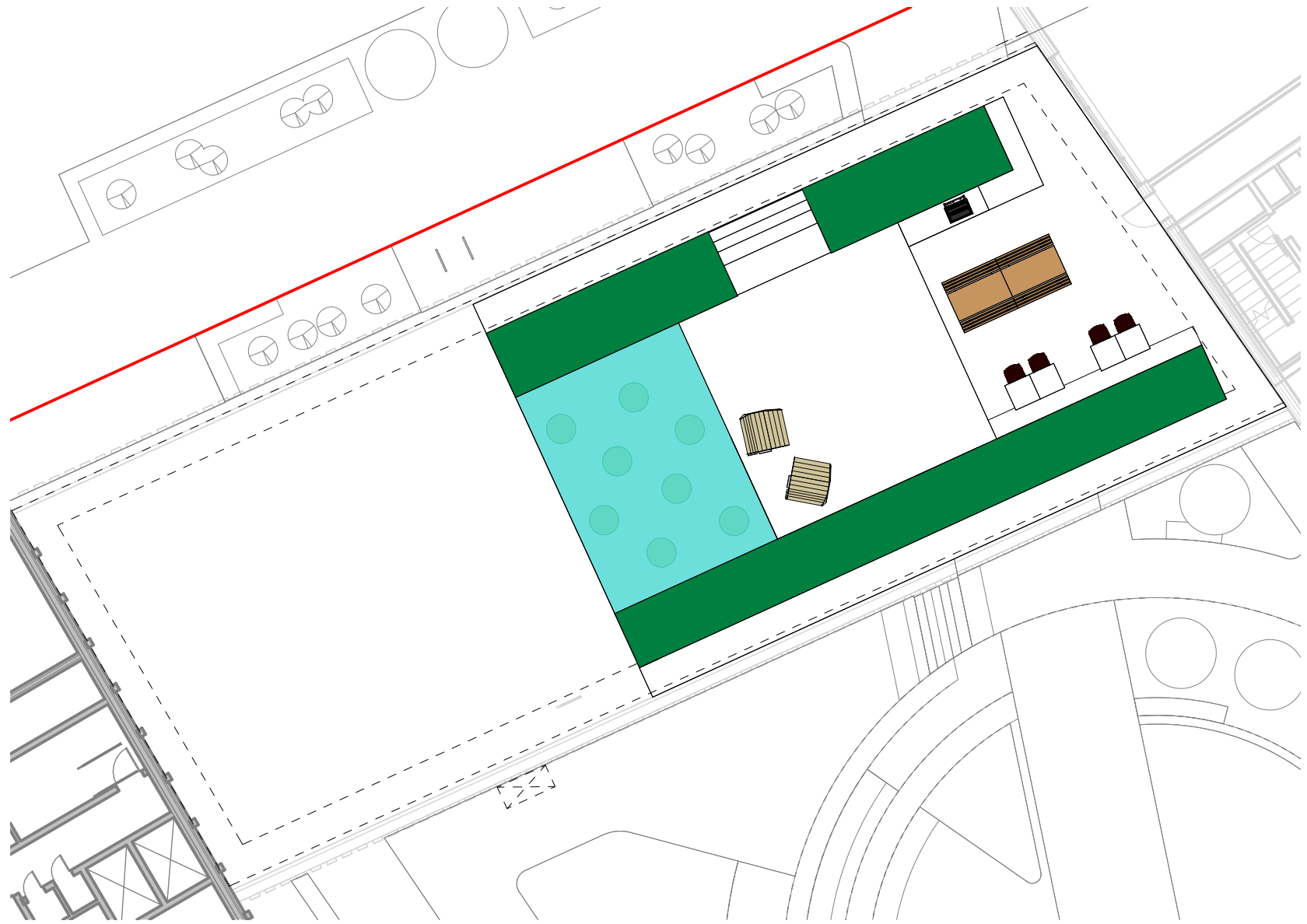


Ground level green space
1 : 200

CURRENT PROPOSALS OPPOSITE - Urban Greening Factor Calculator (Proposed)				
Surface Cover Type	Factor	Area (m²)	Contribution	Notes
Semi-natural vegetation (e.g. trees, woodland, species-rich grassland) maintained or established on site.	1	225	225	Courtyard and roof terrace
Wetland or open water (semi-natural; not chlorinated) maintained or established on site.	1			
Intensive green roof or vegetation over structure. Substrate minimum settled depth of 150mm.	0.8		0	
Standard trees planted in connected tree pits with a minimum soil volume equivalent to at least two thirds of the projected canopy area of the mature tree.	0.8		0	
Extensive green roof with substrate of minimum settled depth of 80mm (or 60mm beneath vegetation blanket) – meets the requirements of GRO Code 2014.	0.7		0	
Flower-rich perennial planting.	0.7	415	290.5	Ornamental perennial planting mixes to courtyard& street & roof terrace
Rain gardens and other vegetated sustainable drainage elements.	0.7		0	
Hedges (line of mature shrubs one or two shrubs wide).	0.6	15	9	
Standard trees planted in pits with soil volumes less than two thirds of the projected canopy area of the mature tree.	0.6	80	48	20 trees at 6 m spread @ 2/3s spread
Green wall – modular system or climbers rooted in soil.	0.6		0	
Groundcover planting.	0.5		0	
Amenity grassland (species-poor, regularly mown lawn).	0.4	145	58	
Extensive green roof of sedum mat or other lightweight systems that do not meet GRO Code 2014	0.3			
Water features (chlorinated) or unplanted detention basins.	0.2			
Permeable paving.	0.1	0	0	
Sealed surfaces (e.g. concrete, asphalt, waterproofing, stone).	0		0	
Total contribution			630.5	
Total site area (m²)			3,966	
Urban Greening Factor			0.158976299	



Roof terrace level 08 green space
1 : 200

Issued for Planning
Draft Issue for Coordination
Revision Note

P02	OP	CS	27.03.24
P01	OP	CS	25.03.24
Rev.	Author	Apvrd	Date

newcastle:
studio 7 & 8, the 4th, heath yard, water road,
newcastle, ned 290. t: +44 (0)191 281 3775

london:
the fisherics, 2, merrymore terrace,
london, e8 3jn. t: +44 (0)20 479 2649

edinburgh:
95 george street, edinburgh
eh2 3ns. t: +44 (0)131 241 0309

glasgow:
177 w george st, glasgow metropolitan area,
g2 2bs. t: +44 (0)141 301 1465

oobe

w: www.oobe.co.uk e: info@oobe.co.uk

Client
Project

DNA (Uxbridge) Ltd
Uxbridge High Street

Title

Urban Greening Factor