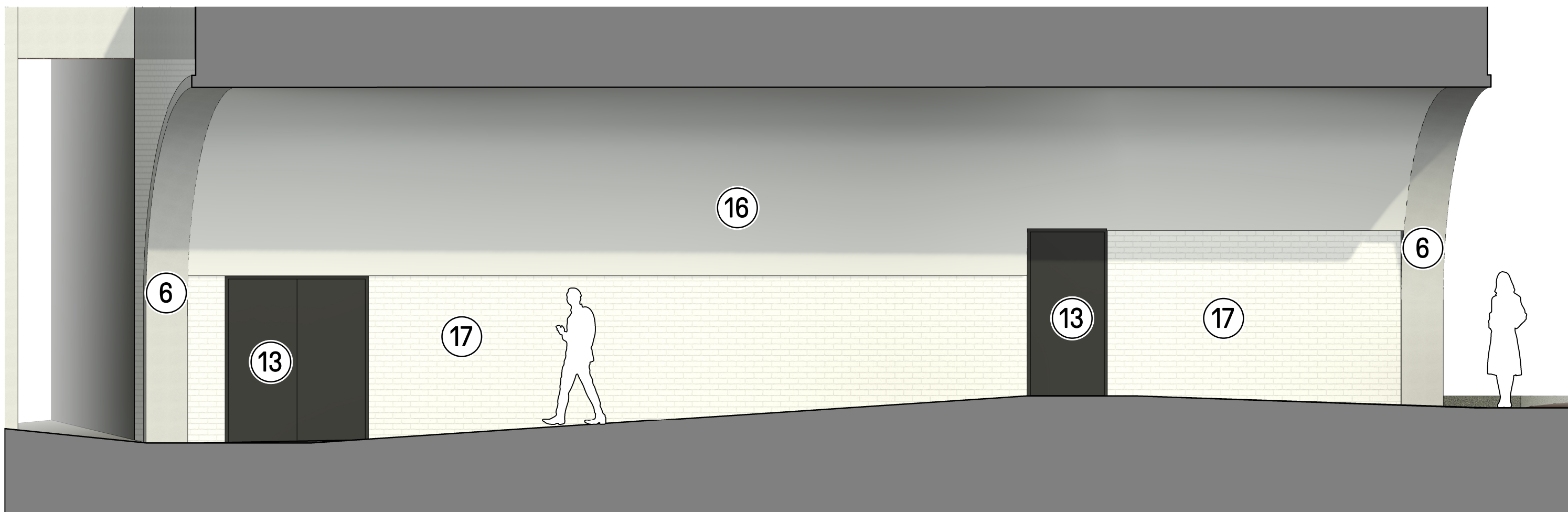


1 Belmont Passageway - East Elevation
1:50



2 Belmont Passageway - West Elevation
1:50

Material Key

- 1 Dark-Tone Brick, Dark Mortar, Stretcher Bond
- 2 Dark-Tone Brick, Light Mortar, Stretcher Bond
- 3 Mid-Tone Brick, Dark Mortar, Stretcher Bond
- 4 Mid-Tone Brick, Light Mortar, Stretcher Bond
- 5 White Brick, White Mortar, Stretcher Bond
- 6 Formed Composite Cladding Elements, Off-White
- 7 Composite Cladding Panels, Mid Grey
- 8 Composite Cladding Panels, Light Grey
- 9 Composite Cladding Panels, Off-White
- 10 Powder Coated Metal, Dark Brown
- 11 Powder Coated Metal, Pink
- 12 Powder Coated Metal, Grey
- 13 Powder Coated Metal, Dark Grey
- 14 Metal Cladding, Grey
- 15 Zinc Cladding System, Standing Seam
- 16 Render Finish, Off-White
- 17 MetroTile, White, Stretcher Bond

-	2024.04.28	AD	Planning Issue
Rev	Date	By	Description

Project
148-154 Uxbridge High Street,
UB8 1JY, Hillingdon

Drawing Title
PROPOSED BELMONT PASSAGEWAY
ELEVATIONS

Project Status
PLANNING

Client Logo

DNA | REAL
ESTATE

MODA

Client
DNA (UXBRIDGE) LTD

Contract Number
UXB

Project Number
P23-110

Scale @ A1
As indicated

Date
28/03/2024

Drawn By
DJ

Checked By
AD

Drawing Number Identifier
062105

Revision
-

Drawing Number
UXB-CGL-Z0-XX-DR-A-062105

28A Easton St, Exmouth
Market, London WC1X 0DS

020 7539 1200
www.cguk.com

