

**OHME ePod Smart EV Charger 7kW
Untethered**

Catalogue Code: 435296081
MPN : OHMEEPOD
50+ Available to dispatch
immediately

Ohme was created with the aim of being the world's most trusted smart charging platform. Their EV chargers are designed to maximise savings by operating when electricity prices are at their lowest.

The Ohme ePod is a 7kW Untethered EV Charger, which is ideal for residential applications. Residents can control the ePod with the three touch sensitive buttons on the front of the unit, or via the trusted app. This means charging can be scheduled in line with dynamic energy tariffs or forecasts of the carbon intensity of electricity generation.

The ePod has a stylish, compact design and features in-built earthing for hassle-free installation. The unit is compatible with all types of electric vehicles and is compliant with the new Smart Charger Regulations.

PRODUCT FEATURES

Control via three touch sensitive buttons or the app
Compact design makes it a discreet addition to any home
In-built earthing
Integrated residual current protection device
Compliant with the new Smart Charger Regulations
Includes current measurement clamp and wall mounting accessories

TECHNICAL SPECIFICATION

Power: 7kW
Model: Untethered
Socket: Type 2 IEC62196
Supply: Single phase
PEN fault detection: Conforms to 722.411.4.1 (iv) of BS7671 18th edition
Dimensions: 230 x 140 x 100mm (H x W x D)Roof



Front Garden Buffering/Screening, showing privacy to ground floor bedrooms

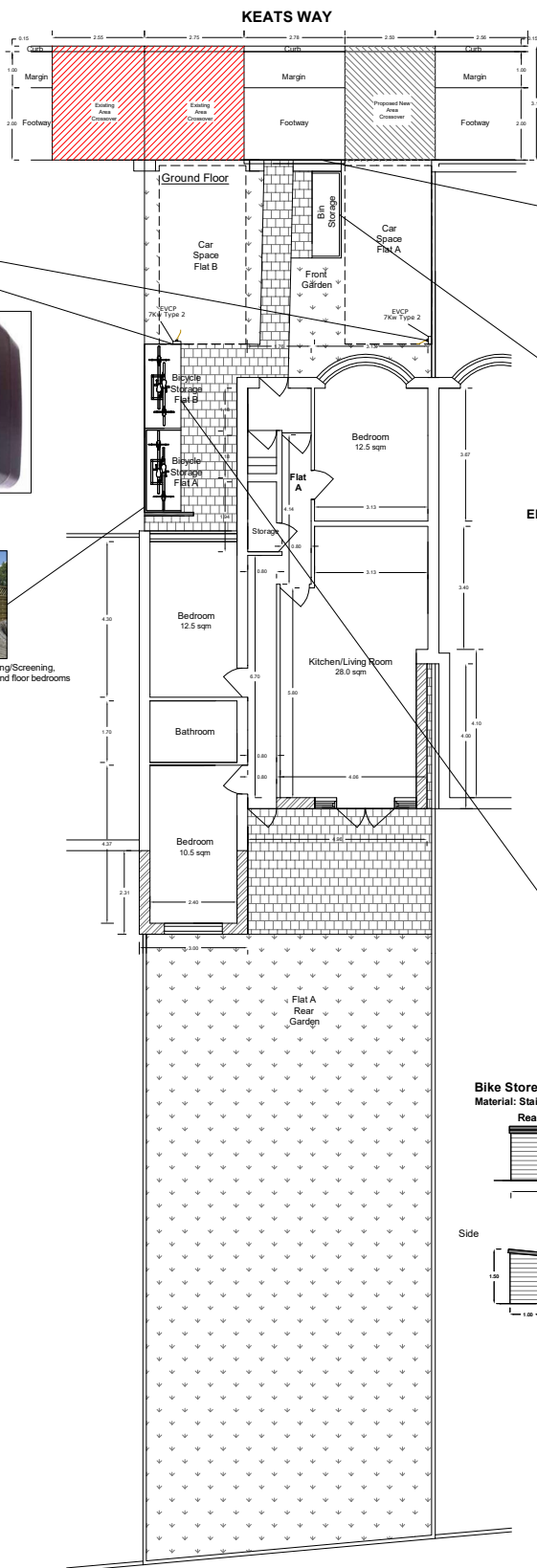


Photo Sample of Boundary Wall



Photo Sample of Bin Store



Elevation of Bin Storage

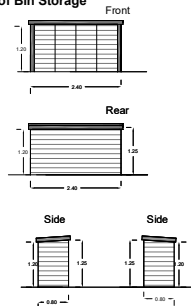
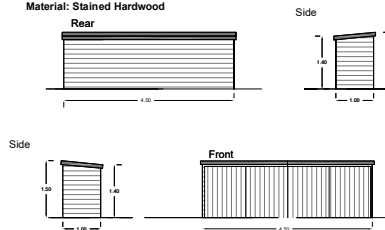


Photo Sample of Bike Store



Bike Store Elevations
Material: Stained Hardwood



NOTES:

Block Plans

reat plans

Contacts:

Tel: 07976 928 789

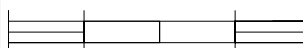
E-Mail: joel.gray@greatplans.co.uk

Location:

57 Keats Way
West Drayton
UB7

Scale: 1:100 @ A2
Scale: 1:200 @ A4

0 2M 8M



Date:

25-03-24

Drawn By:

Joel Gray

Drg No:

07b