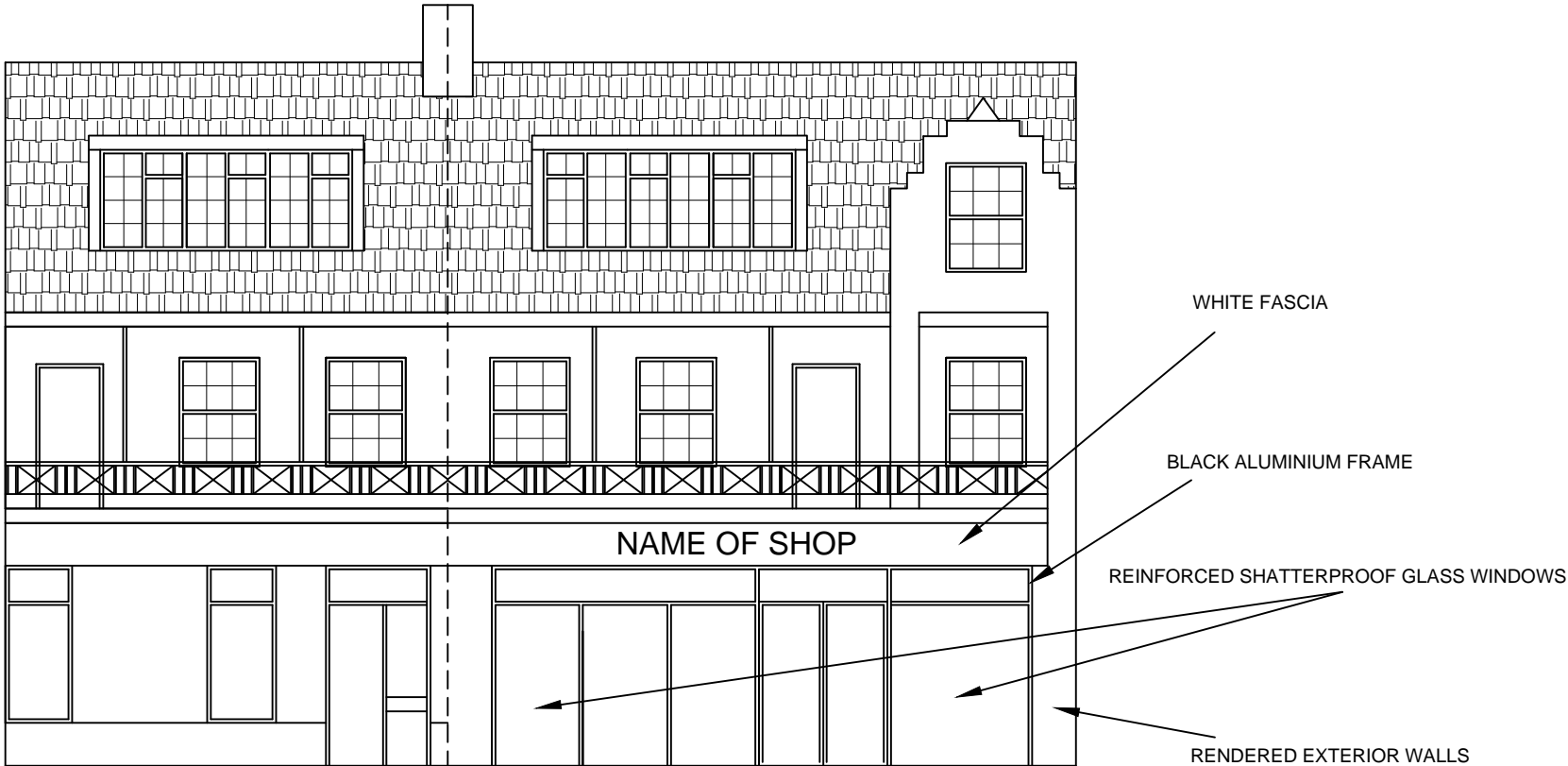
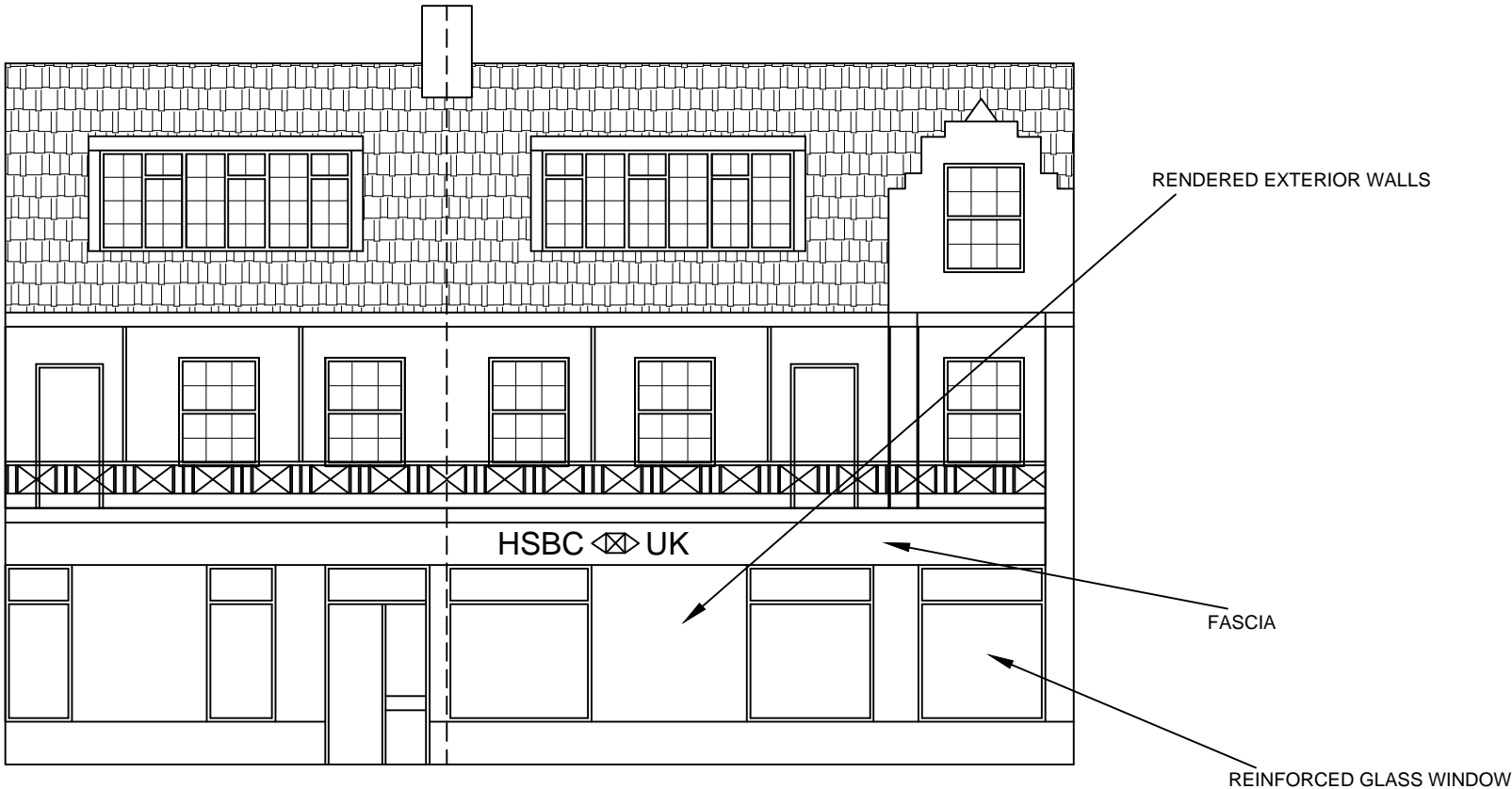


MATERIAL SCHEDULE:

- REINFORCED SHATTERPROOF GLASS WINDOW PANELS
- BLACK ALUMINIUM DOOR AND WINDOW FRAMES
- RENDERED EXTERIOR WALLS
- WHITE SHOP FRONT FASCIA



PROPOSED FRONT ELEVATION



EXISTING FRONT ELEVATION

<div>Note</div> <div>ALL DIMENSIONS TO BE USED AS A GUIDE AND TO BE CHECKED AND VERIFIED ON SITE BEFORE CONSTRUCTION PHASE.</div> <div>DO NOT SCALE FROM THIS DRAWING.</div> <div>ANY AREAS INDICATED ON THIS DRAWING ARE FOR GUIDANCE ONLY AND NO RESPONSIBILITY IS TAKEN FOR THEIR ACCURACY.</div>	<div><div><div>0123456</div><div></div></div><div>Scale bar 1:100</div></div>	<div>Job Title</div> <div>PROPOSED CHANGE OF SHOP FRONT AT: 179 FIELD END ROAD, RUISLIP, HA5 1QR</div>	<div>Scale</div> <div>1:100</div>
	<div>Drawing Title</div> <div>MATERIAL SCHEDULE</div>		<div>Date</div> <div>JUNE 2023</div>