



MVHR UNITS

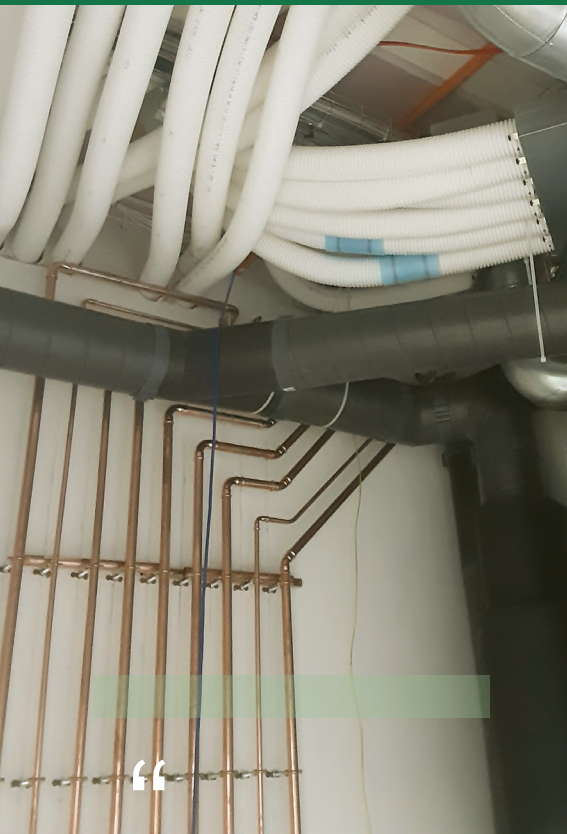
WHY THE ZEHNDER COMFOAIR Q?

- **Quietest on the market** - ComfoAir Q's sound performance of 28*dB(A) means one competitor unit is equivalent to eight ComfoAir Q units in operational noise!
- High-performing heat exchanger with up to **96% heat recovery**.
- **Patented sensor technology** to balance air volume.
- **Unique modulating summer bypass feature**, designed to deliver comfort all year round.
- **Adaptable to each individual installation** - Intuitive start up wizard offers a simple installation process on-site, including left and right hand configuration in one single unit, wall mounted or free standing on mount.
- Zehnder ComfoAir Q units have been **independently tested and certified by the Passive House Institute**, ensuring reliable and effective performance with minimum running costs.
- **Optimised hygiene and pollen filters** as standard.
- **Modern app control** (iOS and Android).
- **Integrated humidity control**.
- **Automatic calibration** to keep the system balanced and at the same level.



zehnder
always the
best climate

DUCTING



90MM SEMI-RIGID DUCTING

- We use the best quality semi-rigid ducting.
- Strong and air tight with very few connections (protected by seals).
- Anti-bacterial and anti-static lining, avoiding potential mould infestation that can occur with PVC ducting.
- Easy and quick to install - can be routed through stud walls, floors, vaulted ceilings etc.
- High-quality food-grade polyethylene, much more efficient than PVC due to smooth inner bore.

RIGID METAL SPIRAL WOUND DUCTING

- Extremely durable.
- Smooth ends for better air flow.
- Double sealed for airtightness (rubber seals).
- Anti-bacterial surface.
- Smooth inner surface.

INTAKE AND EXHAUST DUCTING

- We use highly insulated EPP ducting.
- Easy and quick to install.
- Airtight.
- Exceeds building regulations.
- Perfect for premium self-build or Passive House developments.
- Simple push fit connection.
- Lightweight and easy to handle.
- No sealant or tape required.
- Minimal components to simplify installation.

CONTROLS

ZEHNDER COMFOCONNECT LAN C INTERFACE

- Enables controlling and programming the system via ComfoControl app (for iPhone/Android devices) from a smartphone or tablet.
- Monitors and controls ventilation flow rates, temperatures and external sensors.
- Service and maintenance alerts direct to your phone.
- Remote access of your MVHR from anywhere in the world.
- Installer/technician menu access.



THE MVHR PROCESS

IF YOU WORK WITH US, YOU CAN EXPECT THE FOLLOWING PROCESS:

01

- Deposit invoice issued

02

DESIGN WORK STARTS

- Once deposit invoice is paid, design work is booked in, and usually starts within 2-3 weeks.
- Once you have signed off on the design we will book in a date for your 1st fix installation works.

03

1ST FIX

- Usually takes a week (longer for larger systems).
- All ducting is installed back to the position of where the MVHR unit will be. Air valve locations are set and intake and exhaust ducts (that go to the outside of the house) are usually installed.
- Materials are sent to the site a week before our 1st fix visit.
- We will need to install ductwork before any 1st fix plumbing and electrics takes place.

04

2ND FIX

- Usually takes 1-2 days.
- Usually happens after your plastering has taken place, and at the same time that 2nd fix electrics and 2nd fix plumbing take place.
- This will involve installing the MVHR unit/s and completing any outstanding works to do with the installation.

05

COMMISSIONING

- Usually takes a day.
- Happens at the very end of your project, just before you move in.
- A technician will balance all the air flows of the system and make sure they are set up as per the MVHR design criteria.
- They will carry out a full hand over with you, which will involve showing you how to operate the system, and running through general maintenance requirements.
- At the end of the process we will send you a certificate and report for Building Control.

THROUGHOUT THE WHOLE PROCESS WE ARE ON HAND TO GUIDE YOU AND HELP WITH ANY QUESTIONS OR ISSUES YOU MAY HAVE.

