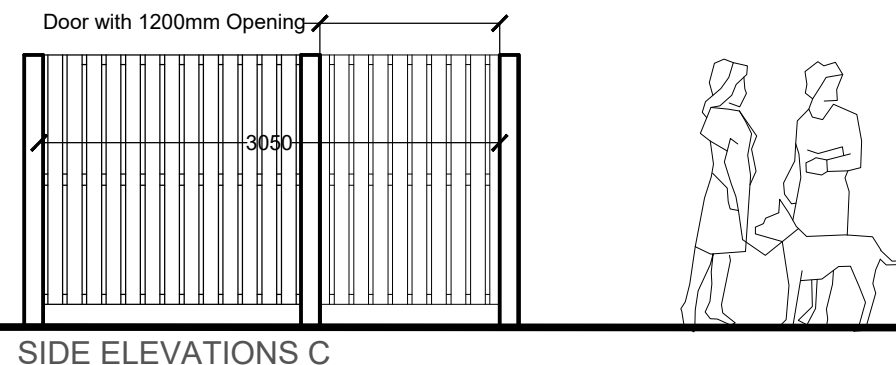
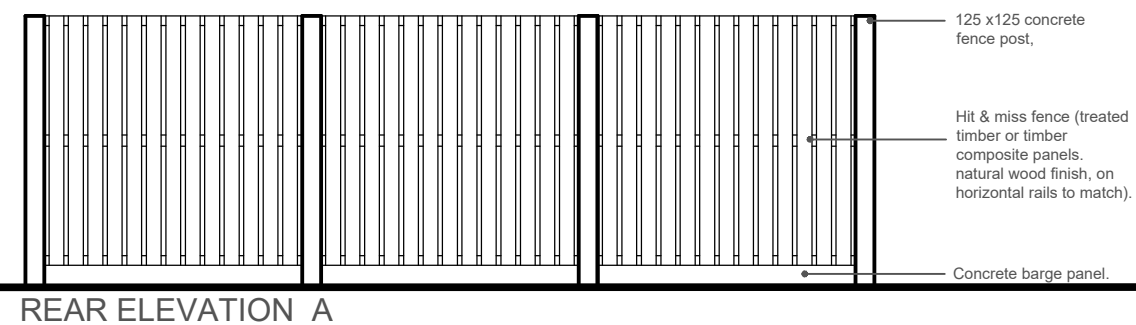
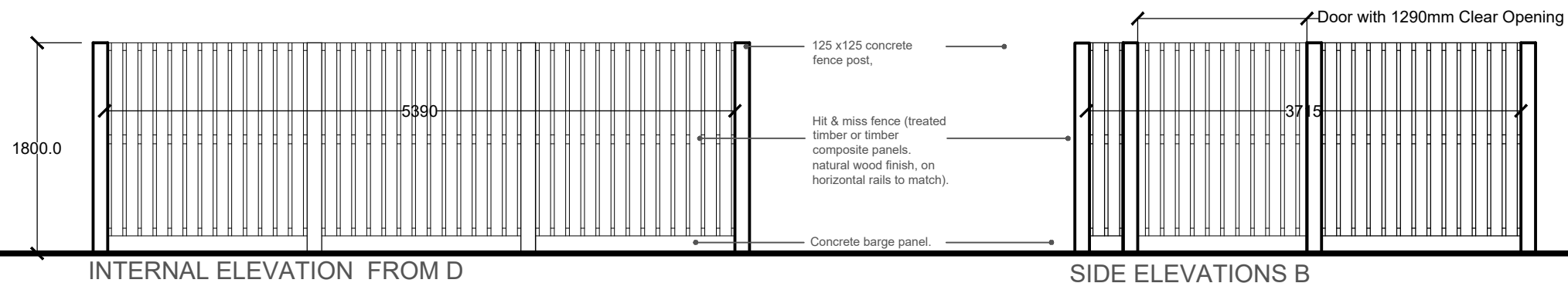
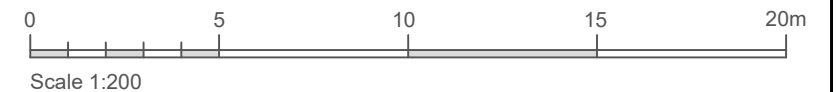
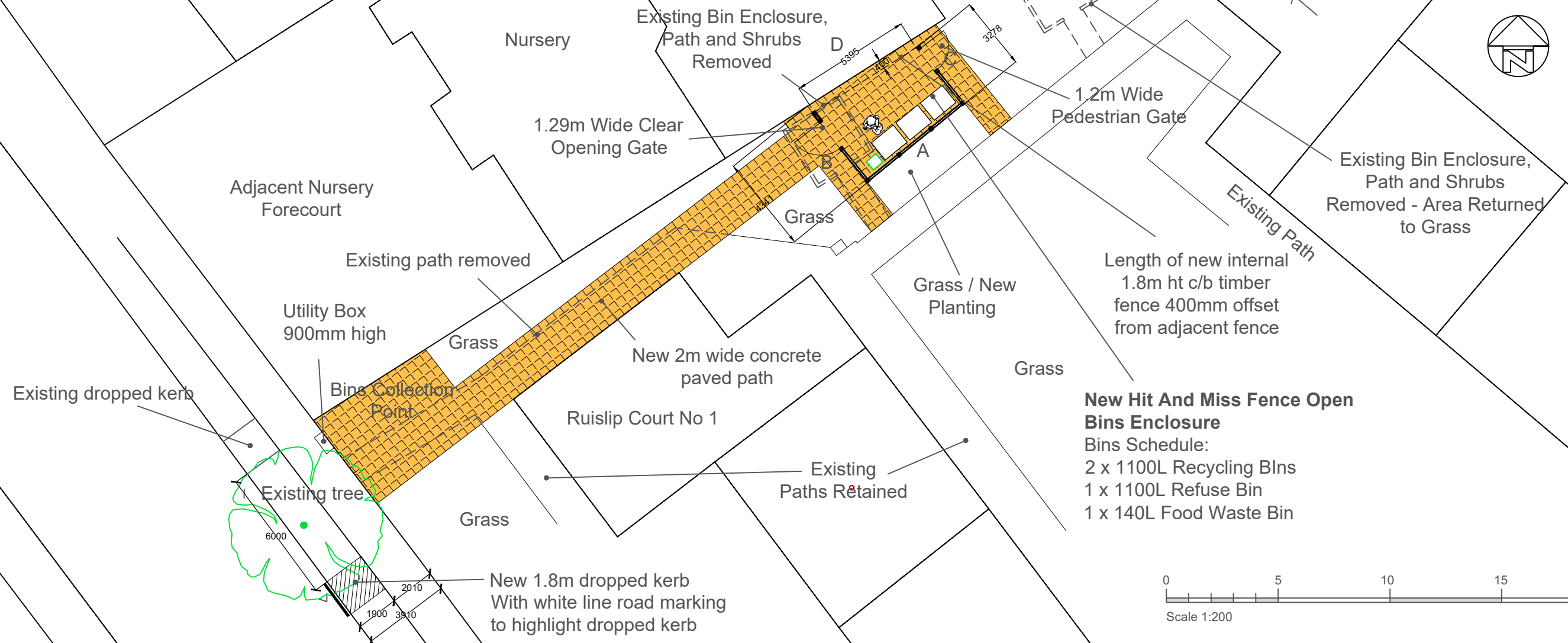


PLAN OF BINS ENCLOSURE SITE A AND BINS COLLECTION POINT



..
Rev	Revision notes	Initials	Date
 <p>HILLINGDON LONDON</p> <p>PLACE DIRECTORATE CAPITAL PROGRAMME WORKS SERVICE 2E/10, CIVIC CENTRE, UXBRIDGE, UB8 1UW Tel: 01895 250 111 www.hillingdon.gov.uk</p>			
<p>PROJECT RUISLIP COURT WEST END ROAD RUISLIP, HA4 6JW</p>			
<p>DESCRIPTION PROPOSED BINS ENCLOSURE AT AREA A WITH PROPOSED DROPPED KERB AND NEW COLLECTION POINT</p>			
SCALE 1:50 @ A3.1:200@A3	DRAWN BY DB	CHECKED BY SV	DATE OCT 2002
DRAWING No.			REV.
2023/D/346/P/07			

ELEVATIONS OF BINS ENCLOSURE SITE A