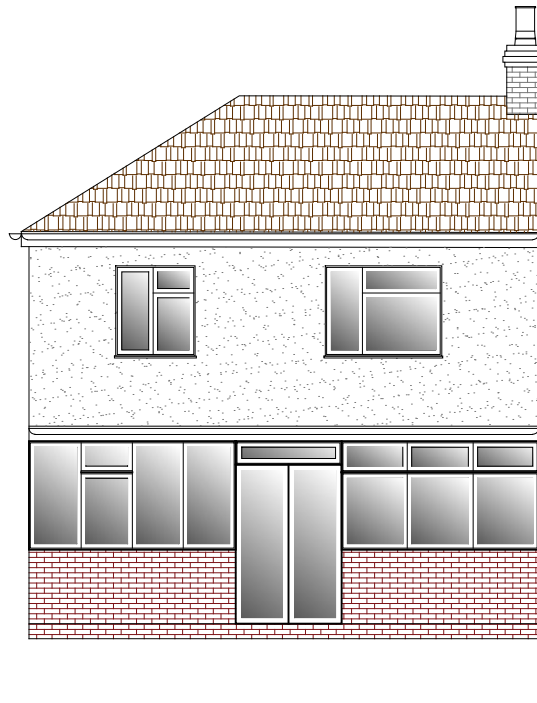


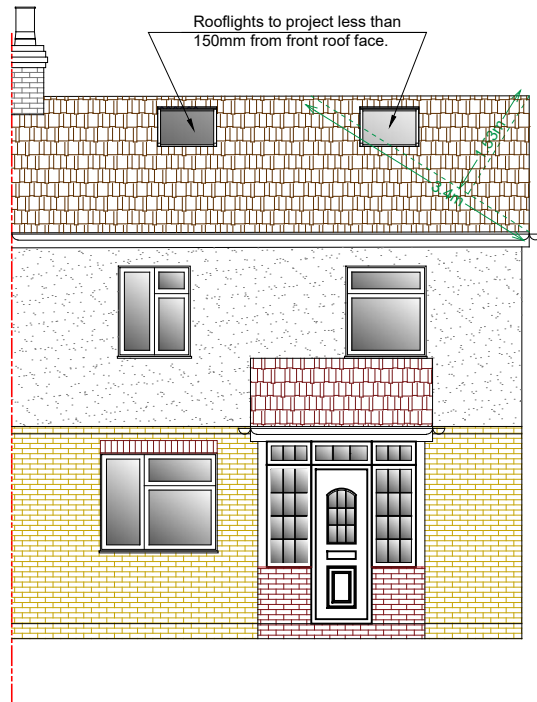
EXISTING FRONT ELEVATION



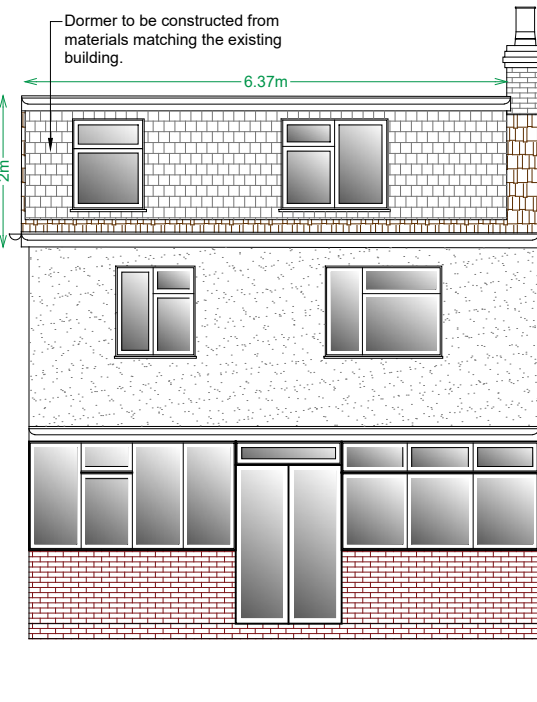
EXISTING REAR ELEVATION

a. Volume of proposed hip-to-gable roof extension:
 $W_a=3.40\text{ m}$ $H_a=1.53\text{ m}$ $D_a=6.09\text{ m}$
 $V_a= W_a \cdot H_a \cdot D_a / 6 = 5.28\text{ m}^3$

b. Volume of proposed box dormer on rear roof slope:
 $W_b=6.37\text{ m}$ $H_b=2.00\text{ m}$ $D_b=2.85\text{ m}$
 $V_b= ((W_b \cdot H_b) / 2) \cdot D_b = 18.15\text{ m}^3$



PROPOSED FRONT ELEVATION



PROPOSED REAR ELEVATION

<div>SITE:</div> <div>14 KINGSTON AVENUE, UB7 8BJ</div>	<div>DRAWING TITLE:</div> <div>EXISTING & PROPOSED ELEVATIONS</div>					<div>PARTY WALL NOTICES:</div> <div>PLEASE NOTE THAT BEFORE BUILDING WORKS COMMENCES IT IS THE RESPONSIBILITY OF BUILDER OR OWNER TO SERVE PARTY WALL NOTICES TO ALL NEIGHBOURS.</div> <div>DIMENSIONS:</div> <div>ALL DIMENSIONS TO BE CHECKED ON SITE CONTRACTOR TO VERIFY ALL BOUNDARY POSITIONS AND DIMENSIONS ON SITE PRIOR TO COMMENCING ANY WORKS, MAKING WORKMANSHIP DRAWINGS OR OBTAINING ANY MATERIALS.DO NOT TRACE OR COPIED FROM THIS DRAWING. DIMENSIONS STATED ARE FOR GUIDANCE ONLY.</div>	<div>MATERIALS AND WORKMANSHIP:</div> <div>all works are to be carried out in a workmanlike manner. all materials and workmanship must comply with regulation 7 of the building regulations, all relevant british standards, european standards, agreement certificates, product certification of schemes (kite marks) etc. products conforming to a european technical standard or harmonised european product should have a ce marking.</div>				
	<div>CLIENT:</div>	<div>SCALE</div> <div>1:100@A3</div>	<div>DATE</div> <div>01/10/2022</div>	<div>DWG REF:</div> <div>22 / 211</div>	<div>DR.No:</div> <div>A-204</div>	<div>DRAWN BY</div> <div>KS</div>	<div>SPECIAL NOTE</div> <div><div><div>IT IS NOT THE RESPONSIBILITY OF THE AGENT IF WORK STARTS BEFORE PLANNING PERMISSION IS GRANTED</div><div>ALL MATERIAL FOR PROPOSED NEW BUILDING WILL BE MATCHING WITH EXISTING</div></div></div>	<div>CDM REGULATIONS</div> <div>The client must abide by the Construction Design and Management Regulations 2015 which relate to any building works which:</div> <div><div>(a) lasts longer than 30 working days and has more than 20 workers working simultaneously at any point in the project.</div><div>(b) exceeds 500 person days.</div></div>	<div><div><div><div><div></div></div><div>EXTRACTOR FAN</div></div><div><div><div>SD</div></div><div>SMOKE DETECTOR</div></div><div><div><div>HD</div></div><div>HEAT DETECTOR</div></div><div><div><div>FD30</div></div><div>FIRE RESISTANCE</div></div></div></div>	<div><div><div><div><div></div><div>Scientific</div><div>DESIGNS</div></div></div><div>SCIENTIFIC DESIGNS LTD</div><div>A unit of Scientific age Research & Testing Lab Ltd.</div><div>ADDRESS: 53A, Azalea Close,</div><div>Ilford, IG1 2BF</div><div>TEL: 02085148369</div><div>Email: info@scientificdesigns.co.uk</div><div>Web: www.scientificdesigns.co.uk</div></div></div>	<div>Approved By:</div> <div><div><div><div></div><div>TRUST MARK</div><div>Government Endorsed Standards</div></div><div><div><div></div><div>SafeContractor</div><div>APPROVED</div></div></div></div></div>
	<div>Mr Gurpreet Singh</div>	<div><div><div>01</div><div>5</div><div>10mt</div></div></div>									