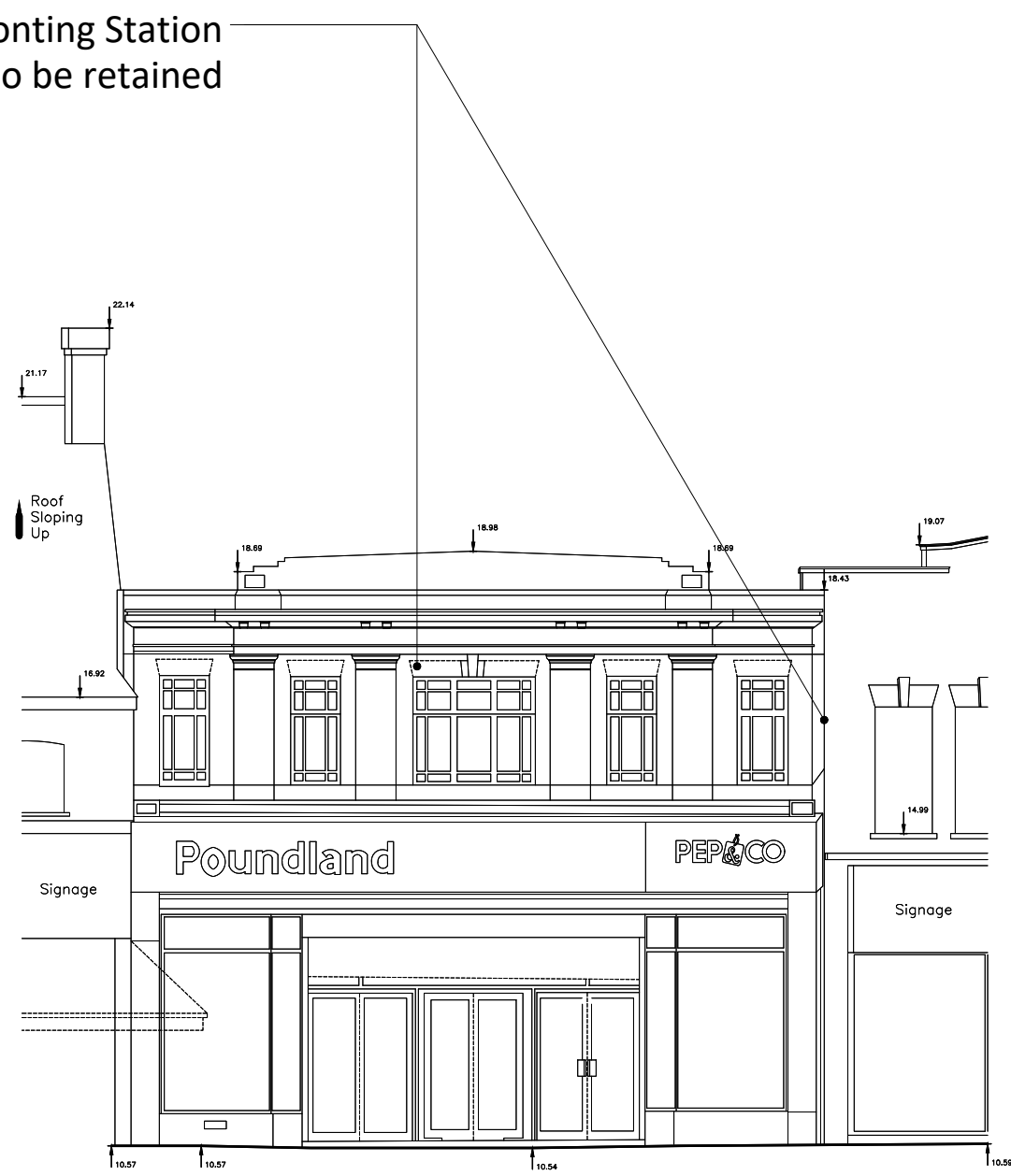


PROPOSED CROWN CLOSE REAR ELEVATION



PROPOSED STATION ROAD FRONT ELEVATION

MATERIAL KEY

Ref. Material Description

- 1.1 Brick type 1: Warm grey multi-stock with light colour mortar, stretcher bond
- 1.2 Brick detail 1: Single soldier course
- 1.3 Brick detail 2: Vertical stretcher bond
- 2.1 Composite windows and doors, 150mm brick reveal, frame and pressed cill in tbc colour
- 2.2 Composite communal entrance door/window, 150mm brick reveal, frame and pressed cill in tbc colour
- 2.3 Metal private entrance doors in tbc colour, 150mm brick reveal
- 2.4 Retail and Apartment bin stores: Metal railings made up of vertical metal flats, PPC finish in tbc colour
- 2.5 Retail secondary entrance door for staff and deliveries: Automated roller shutter, PPC finish in tbc colour
- 2.6 Window Rail: Window openings with communal corridor to 1st and 2nd floors made up of vertical metal flats, PPC finish in tbc colour
- 3.1 Balcony Type 1: Metal railings made up of vertical metal flats to 1 side, PPC finish in tbc colour, with metal soffit to match, 1550mm balcony depth
- 3.2 Balcony Type 2: Metal railings made up of vertical metal flats to 2 sides, PPC finish in tbc colour, with metal soffit to match, 1550mm balcony depth
- 3.3 Balcony Type 3: Metal railings made up of vertical metal flats to 3 sides, PPC finish in tbc colour, with metal soffit to match, 1550mm balcony depth
- 3.4 Balcony Type 4: Metal railings made up of vertical metal flats to 1 side, PPC finish in tbc colour, with metal soffit to match, 1950mm balcony depth
- 3.5 Balcony Type 5: 1100mm brick wall to 2 sides, 4100mm balcony depth
- 3.6 Garden Rail: Metal railings made up of vertical metal flats, PPC finish in tbc colour, over a 800mm high dwarf brick wall enclosing private defensible space
- 4.1 Metal coping, PPC finish in tbc colour
- 4.2 Metal entrance canopy roof, PPC finish in tbc colour, with metal soffit to match

P07	Revised Issue	31.10.23
P06	Consultant Issue	05.10.23
P05	Submission to Hillingdon Council	26.04.23
P04	Post PAA Meeting v3.0	02.02.23
P03	Post PAA Meeting v2.0	04.01.23
P02	PAA Submission	30.09.22

Client:

Rubato Ltd

Project:

Station Road/Crown Close
Hayes
UB3 4BE

Date:

01.01.23

Scale:

1:100@A1 / 1:200 @ A3

Drawing title:

Proposed Elevations Crown Close Rear & Station Rd

Drawing number:

169/106

Revision:

P07

POQ Architects, The Old PC, Rudolph Road, Bushey WD23 3DU
T: +44 (0)20 8950 1463

RIBA
Chartered Practice

POQA