

### 103: Hard & Soft Landscape Plan - Communal Roof Terrace

Scale: 1:100 @ A1

#### PLANTING SCHEDULE 103

##### CONTAINER PLANTING C1

Quantity	Abbrev	Botanical Name	Common Name	Specifications	Density	Notes
2 no.	CratBLC	Crataegus prunifolia	Broad Leaved Corkspur Thorn (Hawthorn)	Multi-stem (cleared stems): H 200-250cm: 45L Pot	Specimen: 1 per planter	For wildlife. Year round interest. Compact.
8 no.	CarEVR	Carex oshimensis 'Everillo' (PBR)	Sedge	2L Pot: Bushy	Staggered planting: 4 per planter	Evergreen. Year round interest.
12 no.	LavAIG	Lavandula angustifolia 'Imperial Gem'	English Lavender	2L Pot: Bushy	Plant in groups of 3 at 350-400mm ctr.: 6 per planter	For pollinators. Evergreen. Fragrance.
22 no.	TOTAL					

2 no. Planter Size: 1500mm Length x 800mm Width x 800mm Height. Colour: RAL 7016 Anthracite Grey

##### CONTAINER PLANTING C2

Quantity	Abbrev	Botanical Name	Common Name	Specifications	Density	Notes
2 no.	CratBLC	Crataegus prunifolia	Broad Leaved Corkspur Thorn (Hawthorn)	Multi-stem (cleared stems): H 200-250cm: 45L Pot	Specimen: 1 per planter	For wildlife. Year round interest. Compact.
12 no.	CarEVR	Carex oshimensis 'Everillo' (PBR)	Sedge	2L Pot: Bushy	Staggered planting: 6 per planter	Evergreen. Year round interest.
12 no.	LavAIG	Lavandula angustifolia 'Imperial Gem'	English Lavender	2L Pot: Bushy	Plant in groups of 3 at 350-400mm ctr.: 6 per planter	For pollinators. Evergreen. Fragrance.
4 no.	OrigHRR	Origanum laevigatum 'Herrenhausen'	Marjoram	3L Pot: Bushy	Staggered planting: 2 per planter	For pollinators. Year round interest.
30 no.	TOTAL					

2 no. Planter Size: 3340mm Length x 800mm Width x 800mm Height. Colour: RAL 7016 Anthracite Grey

##### CONTAINER PLANTING C3

Quantity	Abbrev	Botanical Name	Common Name	Specifications	Density	Notes
3 no.	HelisPL	Helictotrichon Saphirsprudel	Blue Oat Grass	2L Pot: Bushy	Staggered planting: 3 per planter	Evergreen. Year round interest.
3 no.	OrigHRR	Origanum laevigatum 'Herrenhausen'	Marjoram	3L Pot: Bushy	Plant at 550mm ctr.: 3 per planter	For pollinators. Year round interest.
6 no.	TOTAL					

1 no. Planter Size: 1500mm Length x 800mm Width x 500mm Height. Colour: RAL 7016 Anthracite Grey

##### CONTAINER PLANTING C4

Quantity	Abbrev	Botanical Name	Common Name	Specifications	Density	Notes
10 no.	HelisPL	Helictotrichon Saphirsprudel	Blue Oat Grass	2L Pot: Bushy	Staggered planting at 400mm ctr.: plant in groups of 5	Evergreen. Year round interest.
4 no.	LavHID	Lavandula angustifolia 'Hidcote'	English Lavender	3L Pot: Bushy	Staggered planting at 550mm ctr.: plant in groups of 4	For pollinators. Evergreen. Fragrance.
10 no.	LuzuSFR	Luzula Solar Flair	Woodrush Golden Greater	2L Pot: Bushy	Staggered planting: plant in groups of 5	Evergreen. Year round interest.
6 no.	PitGB	Pittosporum tenuifolium 'Golf Ball'	Kohuhu	5L Pot: Bushy	Plant in row at 450mm ctr.	Evergreen. Year round interest. Rounded form. Fragrance.
30 no.	TOTAL					

1 no. Planter Size: 10,860mm Total Length x 600mm Width x 500mm Height. Colour: RAL 7016 Anthracite Grey

##### CONTAINER PLANTING C5

Quantity	Abbrev	Botanical Name	Common Name	Specifications	Density	Notes
10 no.	HelisPL	Helictotrichon Saphirsprudel	Blue Oat Grass	2L Pot: Bushy	Staggered planting at 400mm ctr.: plant in groups of 5	Evergreen. Year round interest.
3 no.	LavHID	Lavandula angustifolia 'Hidcote'	English Lavender	3L Pot: Bushy	Staggered planting at 550mm ctr.: plant in groups of 3	For pollinators. Evergreen. Fragrance.
6 no.	PitGB	Pittosporum tenuifolium 'Golf Ball'	Kohuhu	5L Pot: Bushy	Plant in row at 450mm ctr.	Evergreen. Year round interest. Rounded form. Fragrance.
19 no.	TOTAL					

1 no. Planter Size: 8400mm Total Length x 600mm Width x 500mm Height. Colour: RAL 7016 Anthracite Grey

#### BIODIVERSE GREEN ROOF SPECIFICATION:

**GROWING MEDIUM SUBSTRATE**  
(to BS 8616:2019)  
Supplier: Bauder Ltd (or similar approved Supplier)  
Product: Biodiverse Substrate  
Material: Recycled crushed brick, expanded clay shale and composted organic material  
Depth: Variable between 80mm to 150mm (even layer for wildflower blanket and undulating levels for plug planting and seed mix)  
Condition: Handle in the driest condition possible. Do not handle when wet or frozen

**FILTER FLEECE**  
Supplier: Bauder Ltd (or similar approved Supplier)  
Product: Filter Fleece  
Material: Polypropylene Fleece  
Thickness: 1mm  
Extent: Continuous over entire green roof area

**DRAINAGE LAYER**  
Supplier: Bauder Ltd (or similar approved Supplier)  
Product: DSE 40 Drainage & Protection Layer  
Material: Recycled high density polyethylene  
Thickness: 40mm  
Extent: Continuous over entire green roof area

**PROTECTION MAT**  
Supplier: Bauder Ltd (or similar approved Supplier)  
Product: FSM 600 Protection Mat  
Material: Polyester and polypropylene fibre mix  
Thickness: 4mm  
Extent: Continuous over entire green roof area

**GRAVEL BOARD & EDGING**  
Material: 20-50mm Washed Pebbles  
Depth: minimum 150mm  
Width: 500mm (minimum) to all edges, openings and penetrations  
Edge: Aluminium Edging

**INSPECTION CHAMBER**  
Supplier: Bauder Ltd (or similar approved Supplier)  
Product: ALU250 Inspection Chamber with ALU250 Height Adapter 50mm

**VEGETATION**  
Supplier: Bauder Ltd (or similar approved Supplier)  
Product: Plug Plants (Native Plants)  
Size: 5-6cm Plugs  
Plant Area: 7 plugs per sq.m.

Supplier: Bauder Ltd (or similar approved Supplier)  
Product: Bauder Flora 5 Seed Mix GB50120405 (Urban Area)  
Seed Mix Coverage: 1kg/10sq.m.  
Mix: 38 Species (comprising Wildflowers 28 - 80%; Annuals 6 - 10%; Sedge & Grass 2 - 10% and Sedum 2)

Total area for Plug Planting and Seeding: Approx. 67sq.m.

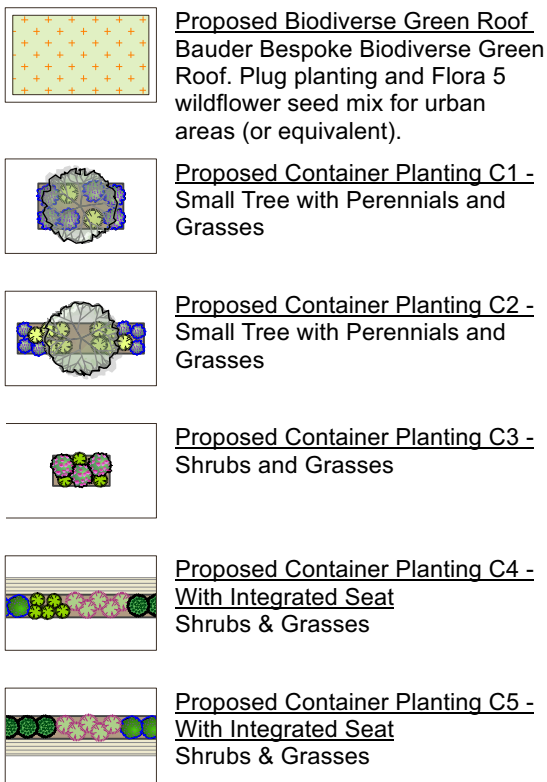
**OTHER CONSIDERATIONS:**  
Placement of deadwood and stone piles  
Creating dew ponds  
Leaving areas of sand and shingle

#### PLANT SELECTION:

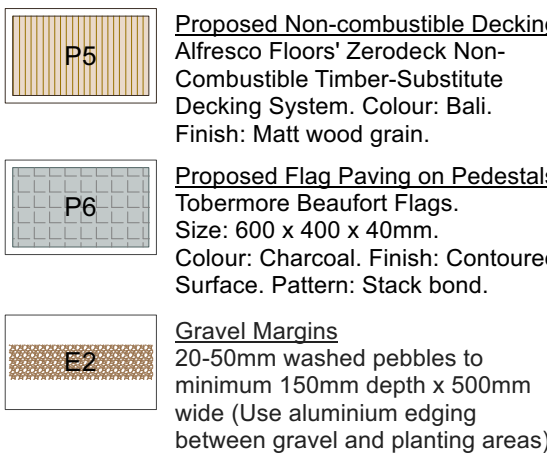


#### KEY:

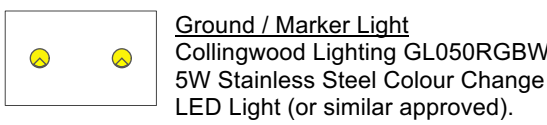
##### SOFT LANDSCAPE



##### HARD LANDSCAPE



##### OTHERS

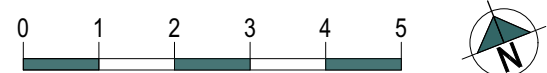


This drawing is the copyright of RAE Architectural & Environmental Ltd and may not be copied or reproduced without permission. Do not scale from this drawing. This document should not be relied on or used in circumstances other than for which it was intended.

This drawing is not intended to show details of foundations, ground conditions or ground contaminants. Each area of ground relied upon to support any structures depicted (including drainage) must be investigated by the Contractor or Structural Engineer. Any suspect or fluid ground, contaminants on or within the ground, should be further investigated by a suitable expert.

For proposed site levels and drainage refer to Architect's or Engineer's drawings.

#### NOTES:



#### Amendments

Date	Description	Rev
Jun 2024	First Issue	P1
Jul 2024	Design scheme revised to Client's instruction. Planting Schedule updated to suit.	P2



#### RAE ARCHITECTURAL & ENVIRONMENTAL

1st FLOOR SOUTHGATE HOUSE  
SOUTHGATE STREET, GLOUCESTER GL1 1UD  
01452 913891 - hello@raealimited.co.uk

Project Title

PROPOSED DEVELOPMENT AT NORTHWOOD  
COMMERCIAL SALES/AUTOCENTRE NORTHWOOD  
LTD, PINNER ROAD, NORTHWOOD

Drawing Title  
PROPOSED HARD & SOFT LANDSCAPE PLAN -  
(TO DISCHARGE CONDITION 6)

Client  
GADA PROPERTY INVESTMENTS LTD

Scale  
1:100 @ A1

Status  
PRELIMINARY (Not for Construction)

Date  
MAY 2024

Drawing No.  
1058 - 103

Current Revision  
P2