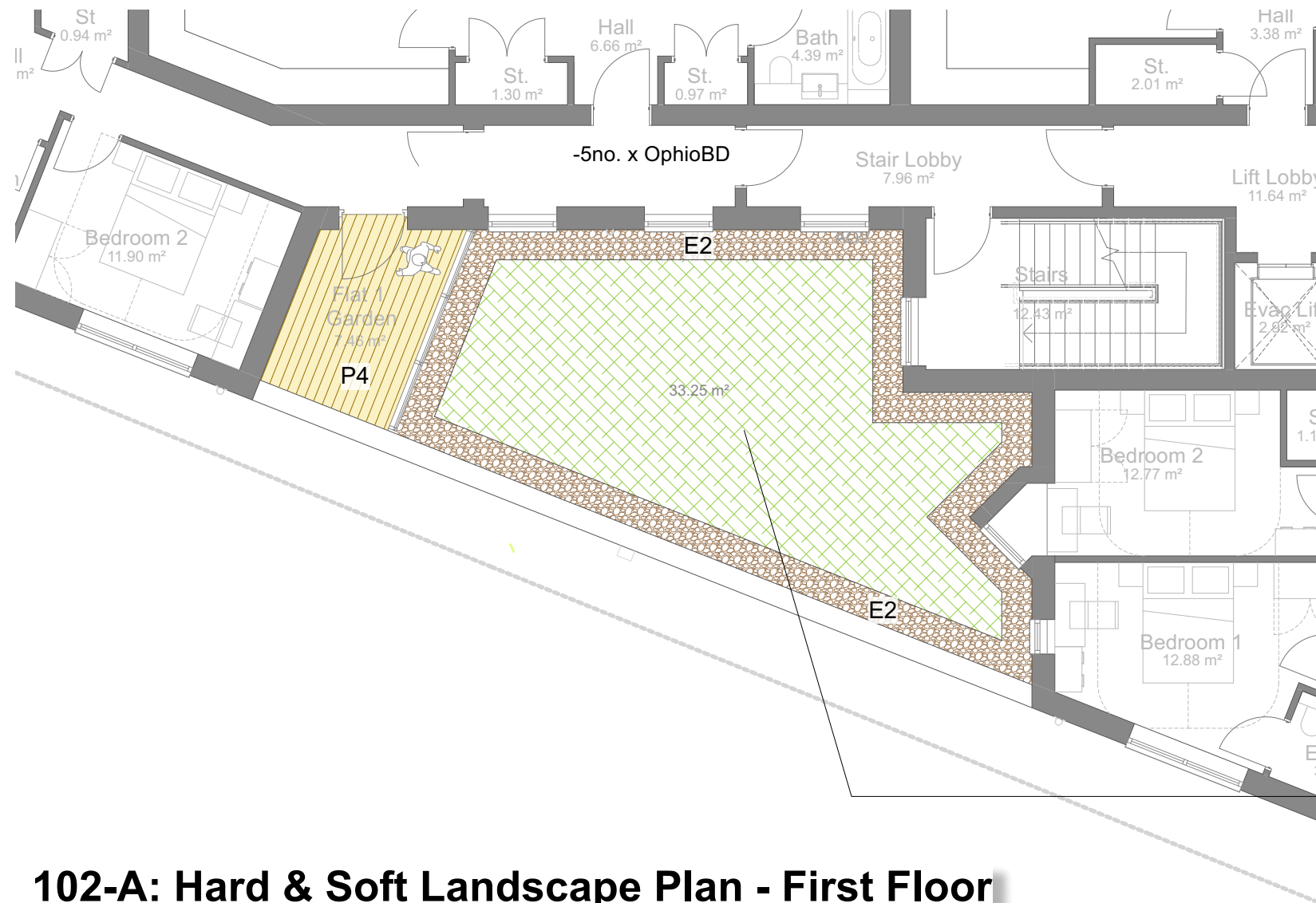


KEY PLAN - FIRST FLOOR



102-A: Hard & Soft Landscape Plan - First Floor

Scale: 1:100 @ A1

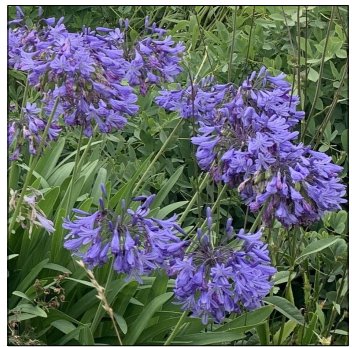
PLANT SELECTION:



Hylotelephium Stonecrop



Pennisetum



Agapanthus



Ophiopogon



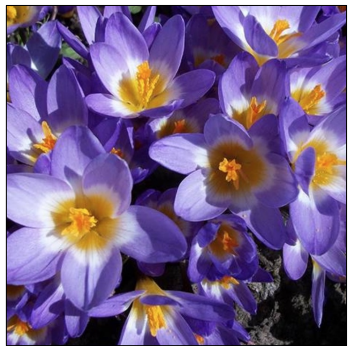
Kniphofia



Skimmia 'Magic Marlot'



Verbena



Crocus

PLANTING SCHEDULE 102

ORNAMENTAL PLANTING FOR WILDLIFE AND WINTER INTEREST

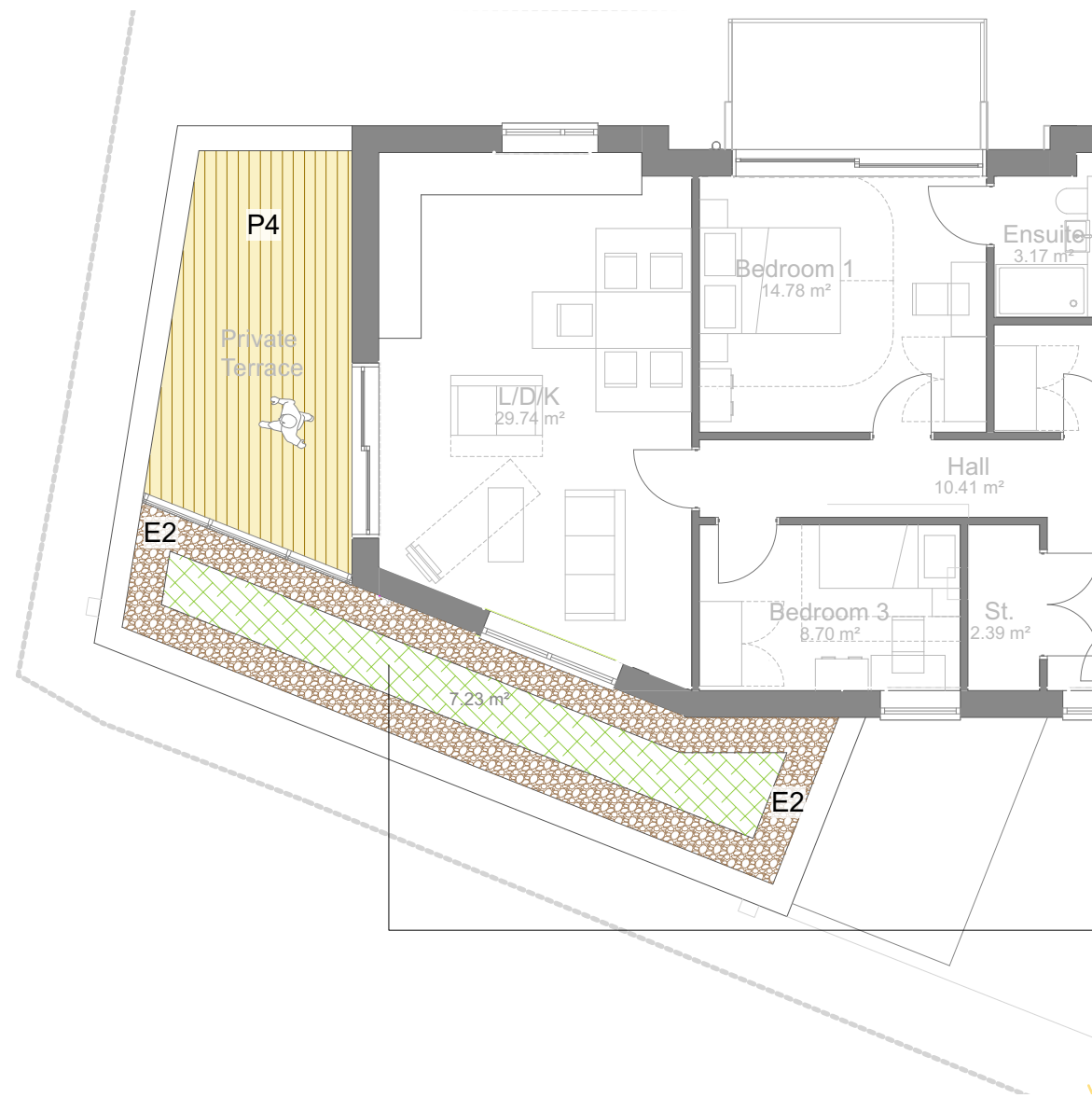
Quantity	Abbrev	Botanical Name	Common Name	Specifications	Density	Notes
6 no.	AgapHH	Agapanthus 'Headbourne Hybrids'	African Lily	2L Pot: Bushy	Plant in groups of 3 staggered with Pennisetum.	For pollinators. Long flowering.
9 no.	HylMDF	Hylotelephium 'Matrona' Darker Form	Stonecrop	2L Pot: Bushy	Plant in groups of 3 at 550-600mm ctr.	For pollinators.
12 no.	KnipEG	Kniphofia Ember Glow ('Tneg') (PBR) (Glow Series)	Red Hot Poker	2L Pot: Bushy	Plant in groups of 3 at 700mm ctr.	For pollinators.
37 no.	OphioBD	Ophiopogon nigrescens 'Black Dragon'	Black Lilyturf	2L Pot: Bushy	Staggered planting in groups of 3 and 5 at 500-550mm ctr.	Evergreen. Year round interest.
12 no.	PennLB	Pennisetum alopecuroides 'Little Bunny'	Chinese Fountain Grass	2L Pot: Bushy	Plant in groups of 6 staggered with Agapanthus.	Drought tolerant.
12 no.	SkimMM	Skimmia japonica 'Magic Marlot'	Japanese Skimmia (Male)	2L Pot: Bushy	Plant in groups of 3 at 500-550mm ctr.	For pollinators. Evergreen. Fragrance. Year round interest.
88 no.	TOTAL					

FOR INTERPLANTING

Quantity	Abbrev	Botanical Name	Common Name	Specifications	Density (Plant / Linear Mtr)	Notes
36 no.	CrocST	Crocus species sieberi Tricolour	Crocus	Bulb	(For Second Floor) Plant in groups of 6 at 80mm deep and 20-30mm between bulbs.	For pollinators.
20 no.	VerLP	Verbena bonariensis 'Lollipop'	Purple Top	1L Pot: Bushy	(For First Floor) Staggered planting.	For pollinators. Long flowering June to September.
56 no.	TOTAL					



KEY PLAN - SECOND FLOOR

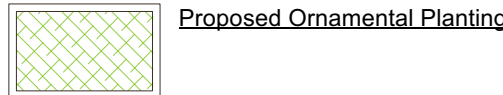


102-B: Hard & Soft Landscape Plan - Second Floor

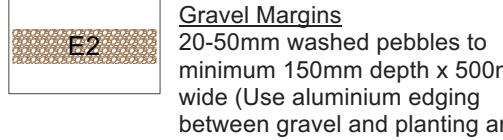
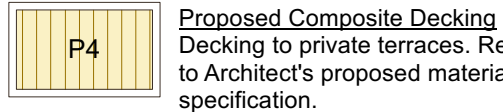
Scale: 1:100 @ A1

KEY:

SOFT LANDSCAPE



HARD LANDSCAPE

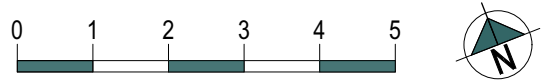


This drawing is the copyright of RAE Architectural & Environmental Ltd and may not be copied or reproduced without permission. Do not scale from this drawing. This document should not be relied on or used in circumstances other than for which it was intended.

This drawing is not intended to show details of foundations, ground conditions or ground contaminants. Each area of ground relied upon to support any structures depicted (including drainage) must be investigated by the Contractor or Structural Engineer. Any suspect or fluid ground, contaminants on or within the ground, should be further investigated by a suitable expert.

For proposed site levels and drainage refer to Architect's or Engineer's drawings.

NOTES:



Amendments		
Date	Description	Rev
Jun 2024	First Issue	P1
Jun 2024	Dogwood removed and Planting Schedule updated.	P2



1st FLOOR SOUTHGATE HOUSE
SOUTHGATE STREET, GLOUCESTER GL1 1UD
01452 913891 - hello@raelimited.co.uk

Project Title
PROPOSED DEVELOPMENT AT NORTHWOOD
COMMERCIAL SALES/AUTOCENTRE NORTHWOOD LTD, PINNER ROAD, NORTHWOOD

Drawing Title
PROPOSED HARD & SOFT LANDSCAPE PLAN - (TO DISCHARGE CONDITION 6)

Client
GADA PROPERTY INVESTMENTS LTD

Scale
1:100 @ A1

Status
PRELIMINARY (Not for Construction)

Date
MAY 2024

Drawing No.
1058 - 102

Current Revision
P2