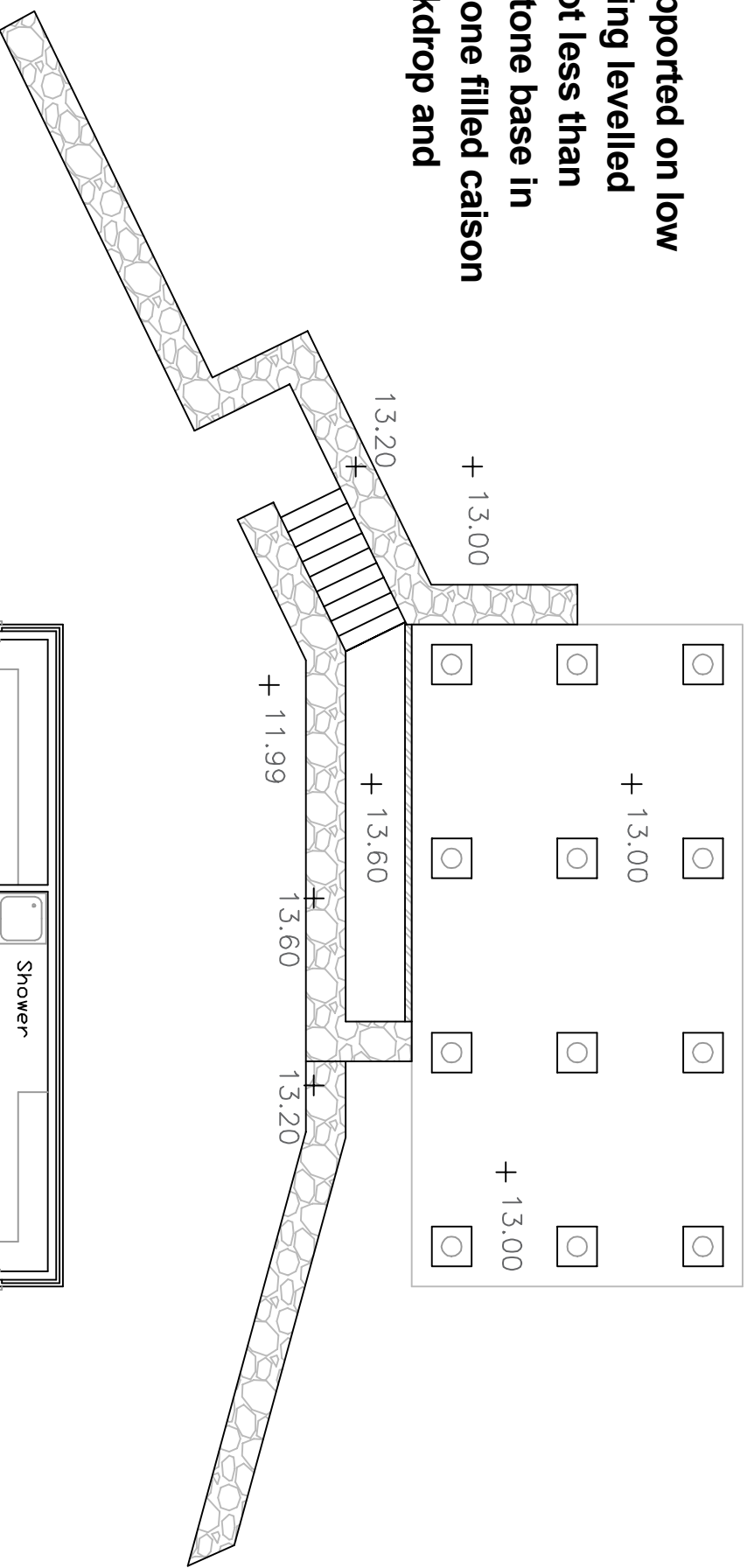


Proposed Colts Ground Facilities

Scale 1:100

Support Plan

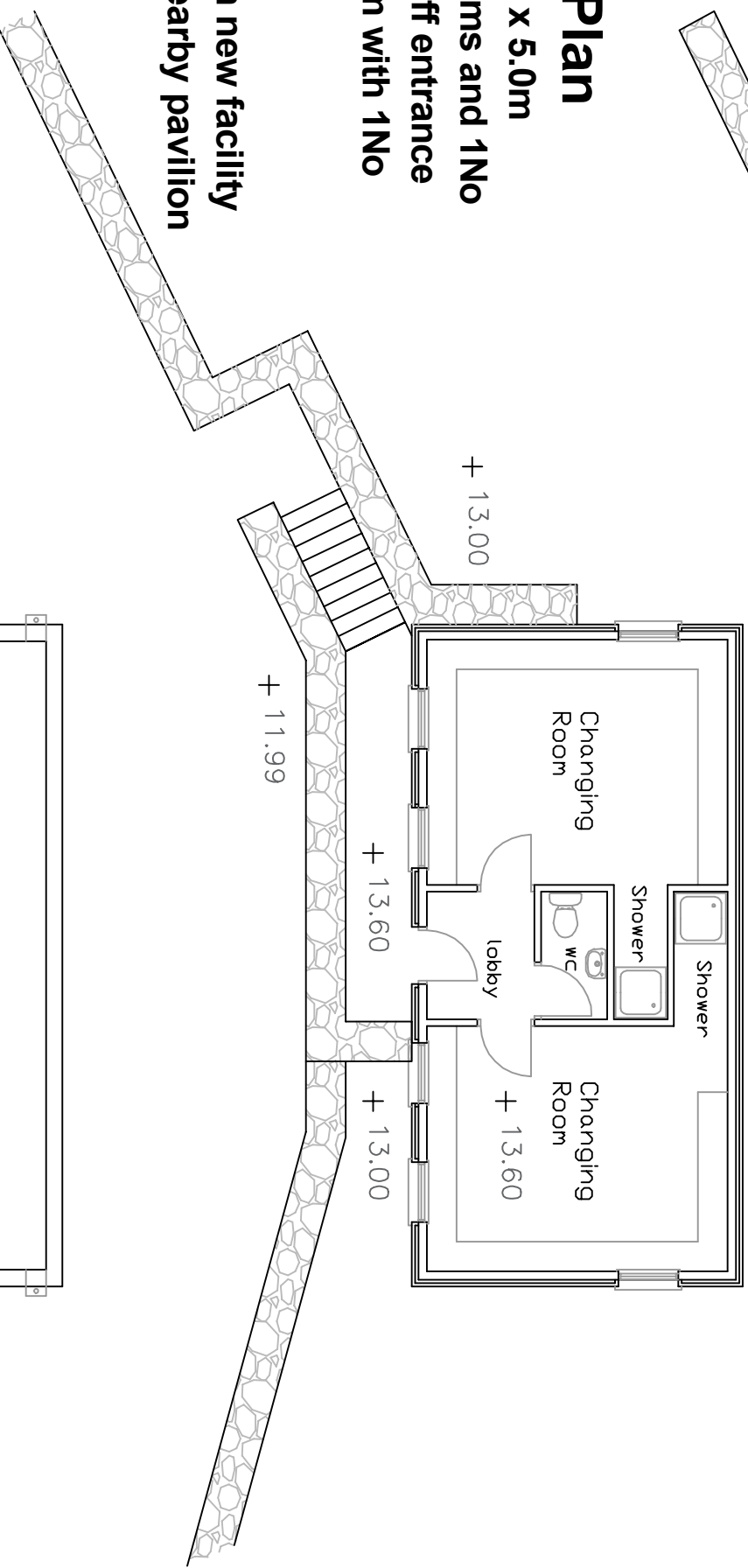
Repurposed Portacabin supported on low impact foundation comprising levelled 50mm concrete slabs on not less than 150mm consolidated roadstone base in elevated position behind stone filled caisson retaining wall with tree backdrop and outside of the tree line



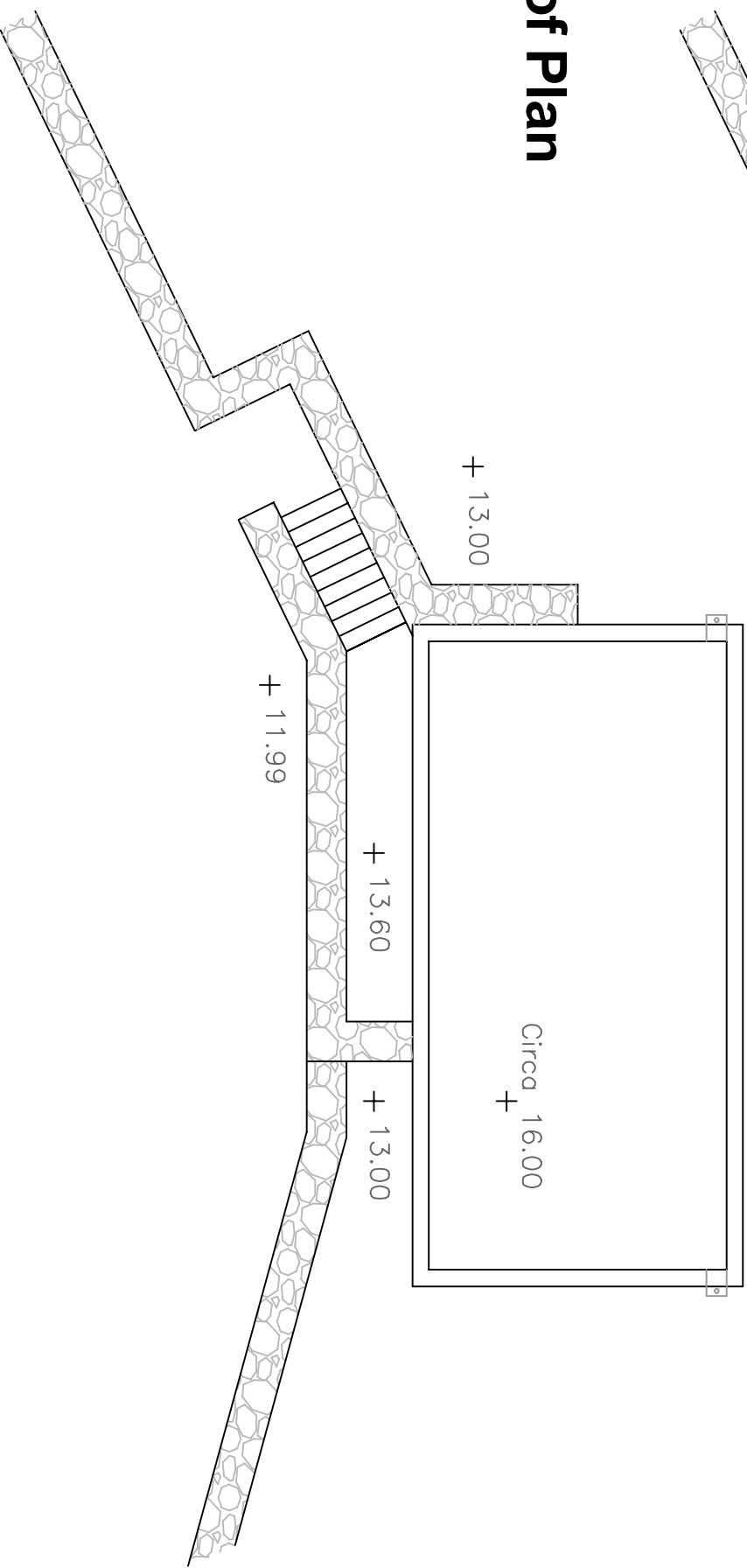
Indicative Layout Plan

External dimensions 10.0m x 5.0m
2No separate changing rooms and 1No indepdent toilet facility off entrance lobby. Each changing room with 1No shower cubicle

Services connected to/from new facility piggybacked off existing nearby pavilion



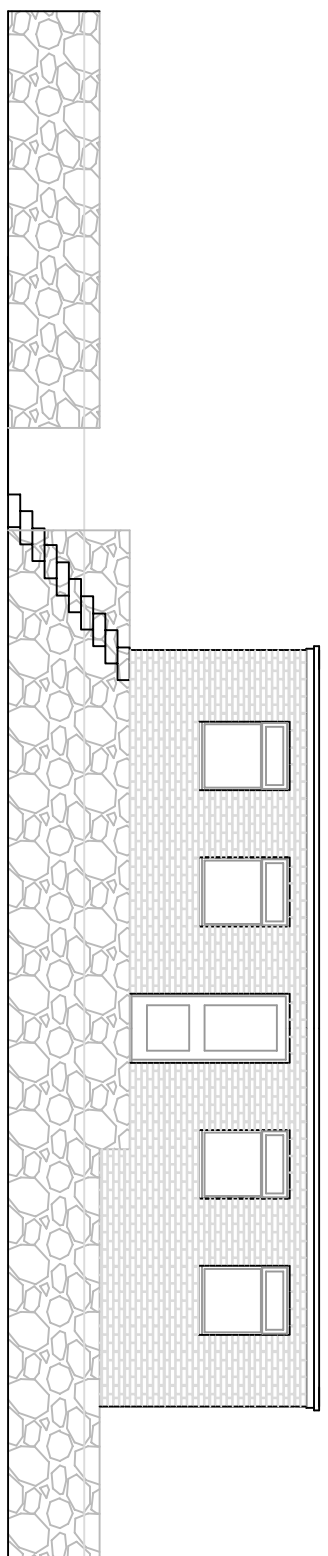
Indicative Flat Roof Plan



Proposed Colts Ground Facility

Scale 1:100

Front Elevation



Elevational Treatment

Exterior of portacabin made good and overlaid with frame and brick slips to replicate finish of the existing Pavilion

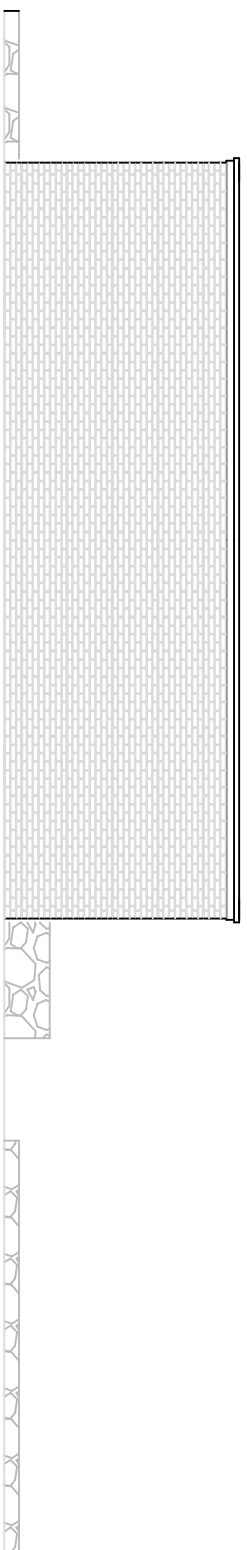
White Upvc windows & door generally to front & flank elevations with obscure glazing, top opening lights & trickle vents to match those to the existing pavillion

Right Flank Elevation



Left Flank Elevation

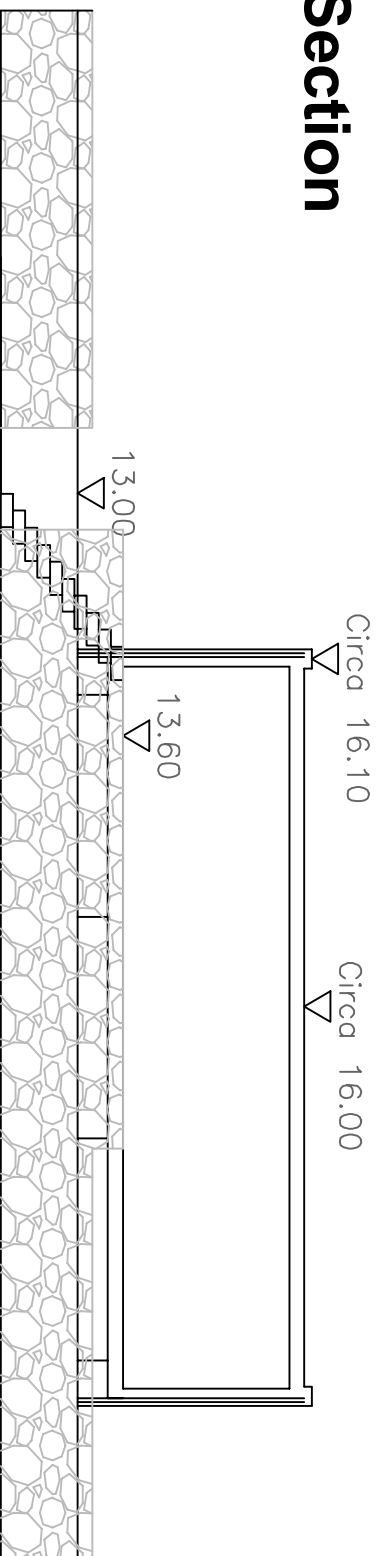
Rear Elevation



Services

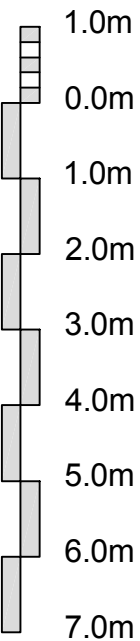
Drainage, supply and electrical services drawn from/connected to adjacent existing established Pavillion. Services run in a single, wide trench (being suitably spaced & conduited) in the most convenient route and location, to be determined. All supplies subject to isolation from within the existing established pavillion facility.

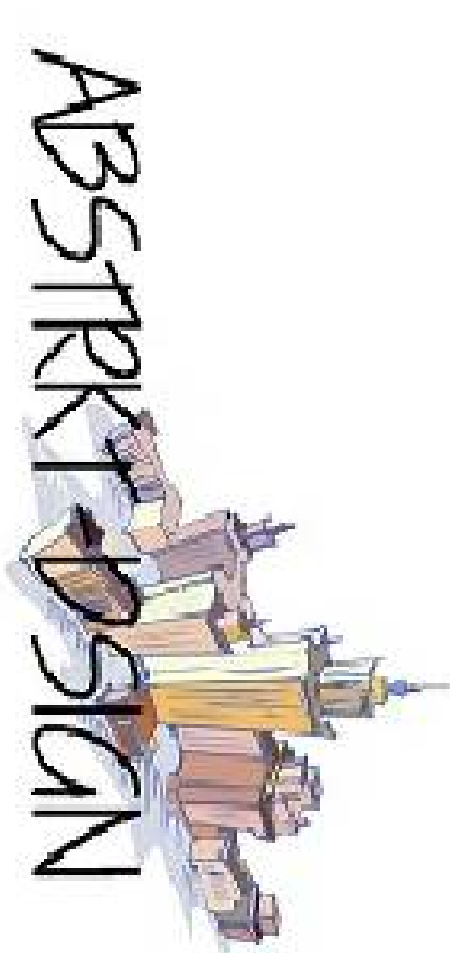
Cross Section



Approximate dimensions based on standard Portacabin sizes (intended not to be exceeded)

Scale Bar
1:100





www.abstrkt-design.co.uk

CLIENT
Northwood Cricket Club

PROJECT
Intended Reuse of Jubilee Field to Create Dedicated Colts Ground

REVISIONS

No.	Date
A	May'23

Completion of elevational representation

DRAWING TITLE
Proposed Colts Ground Facilities

SCALE
1:100 @ A1

DATED
Feb 2023

DRAWN
CPH

Dwg No
20220617 PL05

REV
A