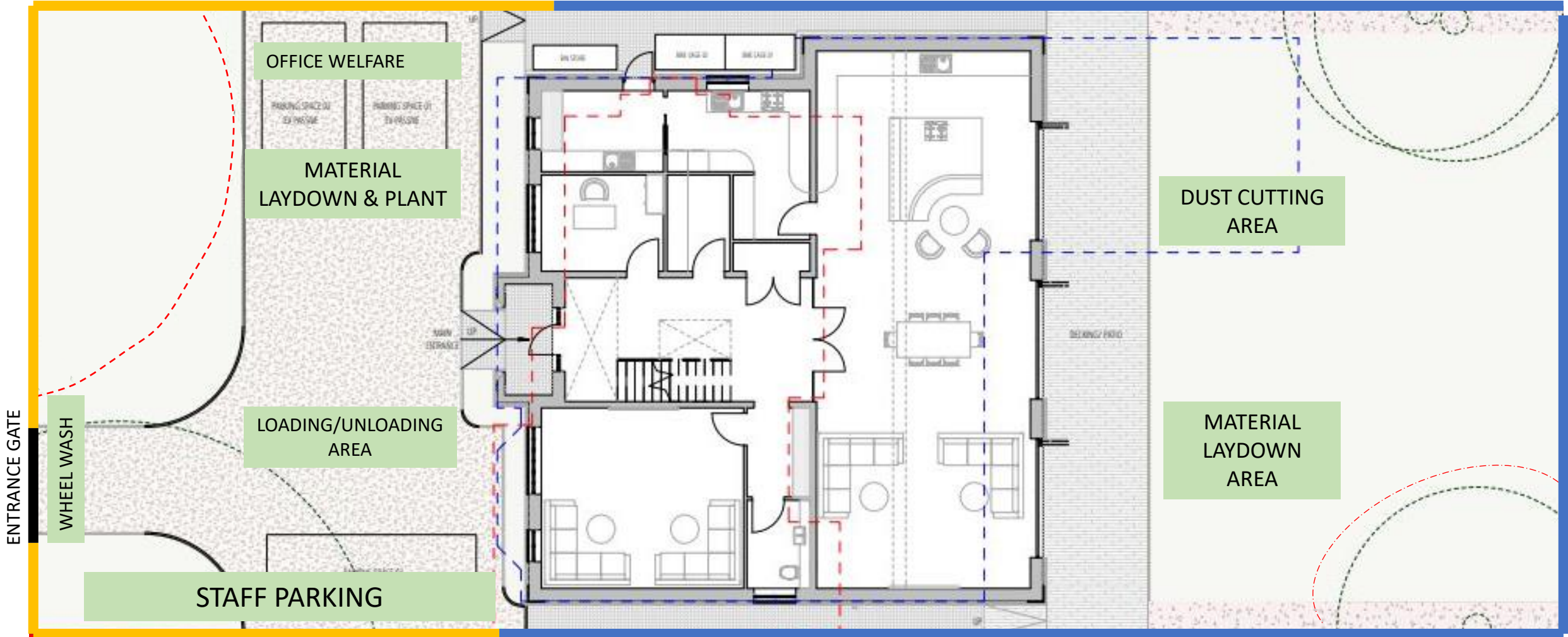


PLANNING CONDITION 3 – 77289/APP/2022/3836



KEY

- TREE PROTECTION
- TIMBER HOARDING
- EXISTING FENCE & WALL RETAINED
- ENTRANCE GATE

- a. Long vehicles reversing out of the sight will be guided via a banksman.
- b. All working areas to be restored as per the landscape plan submitted in accordance with planning condition 8.
- c. Working hours 8am-6pm Mon-Fri 8am-1pm Sat.
- d. Dirt to be controlled via wheel wash facilities
- e. Dust control will be via water suppression and on-tool extraction unit.
- f. Noise to be eliminated at source where possible, or products/process substituted where feasible with less noisier solution. If this isn't possible then isolation via noise baffles and curtains to be used.