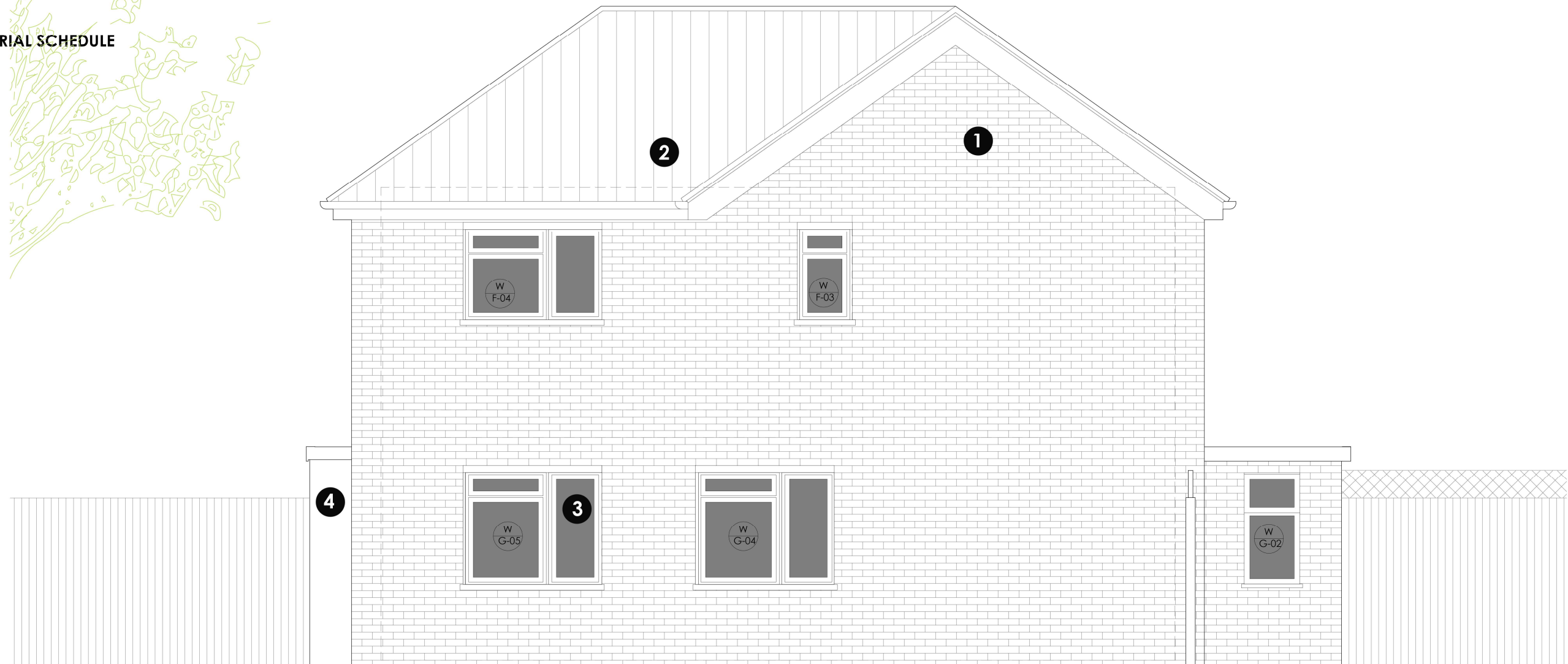
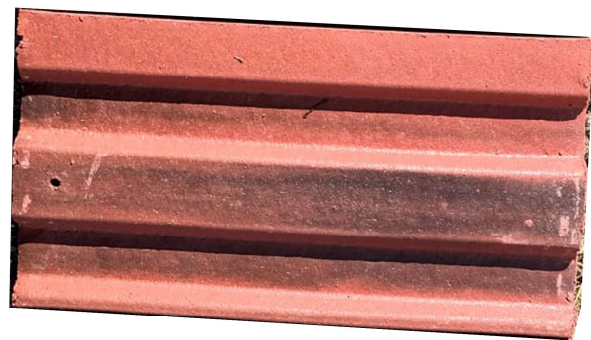


EXTERNAL MATERIAL SCHEDULE



1

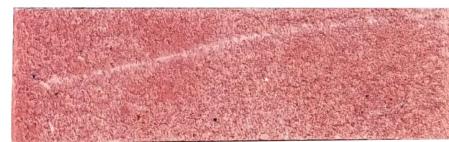


Redland 49 Concrete Interlocking Roof Tile - Rustic Red 78

This is a smooth roof tile the matches surrounding roofs. It's surface allows for low maintainance and easy clean.

Manufacturer: Redland
Dimension: 382 x 226mm

2



Forterra Facing Brick Atherstone Red Stock

These are a popular red stock facing brick with a light textured face chosen to match the surrounding red brick buildings.

Manufacturer: Forterra
Dimension: 215 x 100 x 65 mm
Fire rating: A1 class

3



Optima by Profile 22

Hillingdon Council specified this white UPVC system for windows and doors due to its ease of maintainance and application.

Colour: White

4

White render

This will be applied on very limited limited external surfaces.