



01 SOUTH ELEVATION  
1 : 100

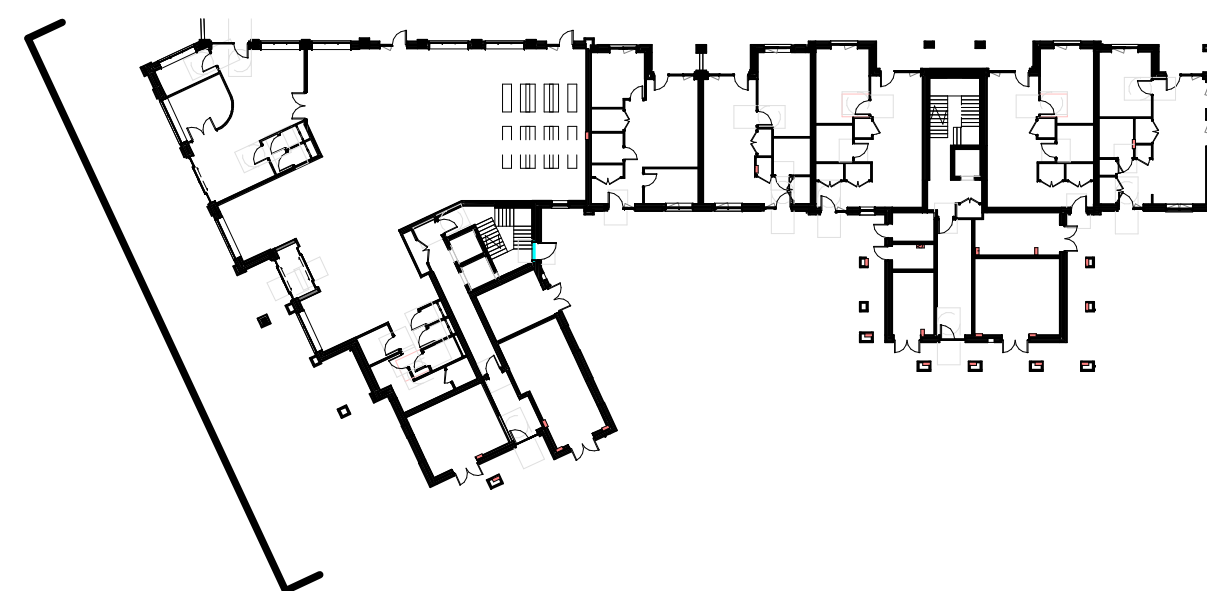


MATERIAL KEY

- |    |  |
|----|--|
| 1  | FACING BRICK BUFF BROWN STRETCHER BOND                                     |
| 4  | STONE CLADDING   |
| 7  | TIMBER ALUMINIUM COMPOSITE WINDOWS - COLOUR: DARK GREY                     |
| 9  | SLIDING EXTERNAL SHUTTERS SUN SHADING WITH TIMBER EFFECT ALUMINIUM LOUVRES |
| 11 | ALUMINIUM RAINWATER DOWNPIPE AND HOPPER - COLOUR: DARK GREY                |
| 13 | TIMBER CLADDING  |
| 14 | RECESSED BRICK DETAIL - FLEMISH BOND                                       |



02 SOUTH ELEVATION with context  
1 : 100



0 1m 5m 10m  
Scale: 1:100

drawing title:  
**M9534- HUN- DR- APL211**

**VIEWSLEY FORMER POOL SITE  
PROPOSED SOUTH ELEVATION**

Issued for **PLANNING**

revision date 2024 Dec

Material Tags updated for External material schedule

revised by  
ML

**Viewsley Housing and Library Sites**

Space One, Hammersmith,  
London, W6 0EA

hunters project number:	client project number:	drawn by:	checked by:	scale:
M9534	-	GV	JW	1:100 1 @ A0

All drawings are to be printed in colour.

Use figured dimensions only. All levels and dimensions to be checked on site. This drawing is to be read in conjunction with all other relevant drawings and specifications. Hunters is a trading name of Hunter & Partners Limited. © Hunter & Partners Limited. All rights reserved.

**hunters**  
Space One Beadon Road  
London W6 0EA  
T 020 8237 8200  
mail@hunters.co.uk  
www.hunters.co.uk  
Revit24-51 Central File\M9534-Otterfield Road\_Planning\_2023-06-27\_detached.rvt