

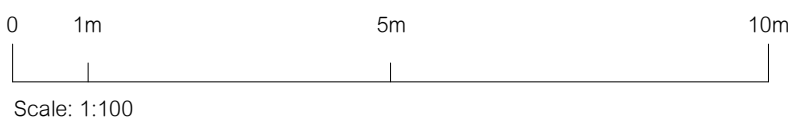
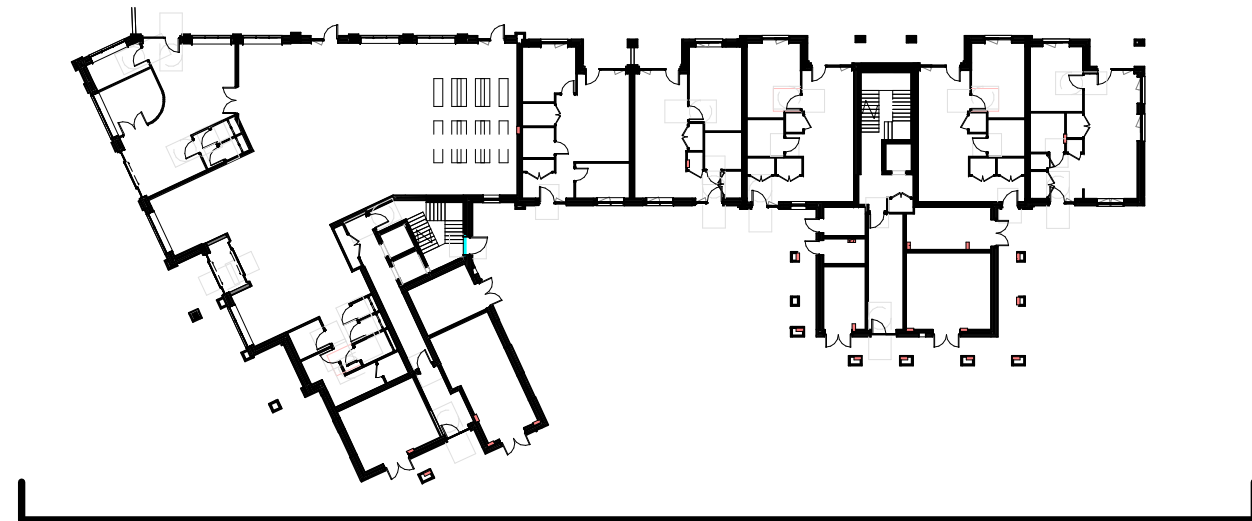


MATERIAL KEY

- 1 FACING BRICK BUFF BROWN STRETCHER BOND
- 3 FACING BRICK LIGHT GREY STRETCHER BOND
- 5 SEAM ZINC ROOFING
- 6 PPC ALUMINIUM COPING - DARK GREY
- 10 PRIVATE ENTRANCE CANOPY - PPC ALUMINIUM FASCIA - COLOUR GREY
- 11 ALUMINIUM RAINWATER DOWNPIPE AND HOPPER - COLOUR: DARK GREY
- 12 PPC ALUMINIUM LOUVERED SERVICE DOOR - COLOUR: DARK GREY
- 14 RECESSED BRICK DETAIL - FLEMISH BOND
- 16 RECONSTITUTED STONE BAND
- 17 VERTICAL SIGNAGE
- 18 HORIZONTAL SIGNAGE
- 20 SHEFFIELD STANDS



Revision	Date	By	Material Tags updated for External material schedule
D	2024 Dec	ML	Material Tags updated for External material schedule
C	2023 July	GH	GF window amended
B	2023 July	GH	Issued for Planning
A	2023 June	GH	Issued for coordination



drawing title:  
**M9534- APL209**

**VIEWSLEY FORMER POOL SITE  
PROPOSED EAST ELEVATION**

Issued for **PLANNING**

revision date  
**D** 2024 Dec

Material Tags updated for External material schedule

revised by  
**ML**

**Yiewsley Housing and Library Sites**

Space One, Hammersmith,  
London, W6 0EA

hunters project number: client project number: drawn by: checked by: scale:  
M9534 - GV JW 1:100 1 @ A0

All drawings are to be printed in colour.

Use figured dimensions only. All levels and dimensions to be checked on site. This drawing is to be read in conjunction with all other relevant drawings and specifications. Hunters is a trading name of Hunter & Partners Limited. All rights reserved.

**hunters**  
Space One Beadon Road  
London W6 0EA  
T 020 8237 8200  
mail@hunters.co.uk  
www.hunters.co.uk  
Revit24-51 Central File\M9534-Otterfield Road\_Planning\_2023-06-27\_detached.rvt