



01 NORTH ELEVATION
1 : 100



MATERIAL KEY

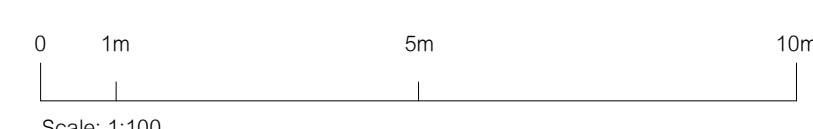
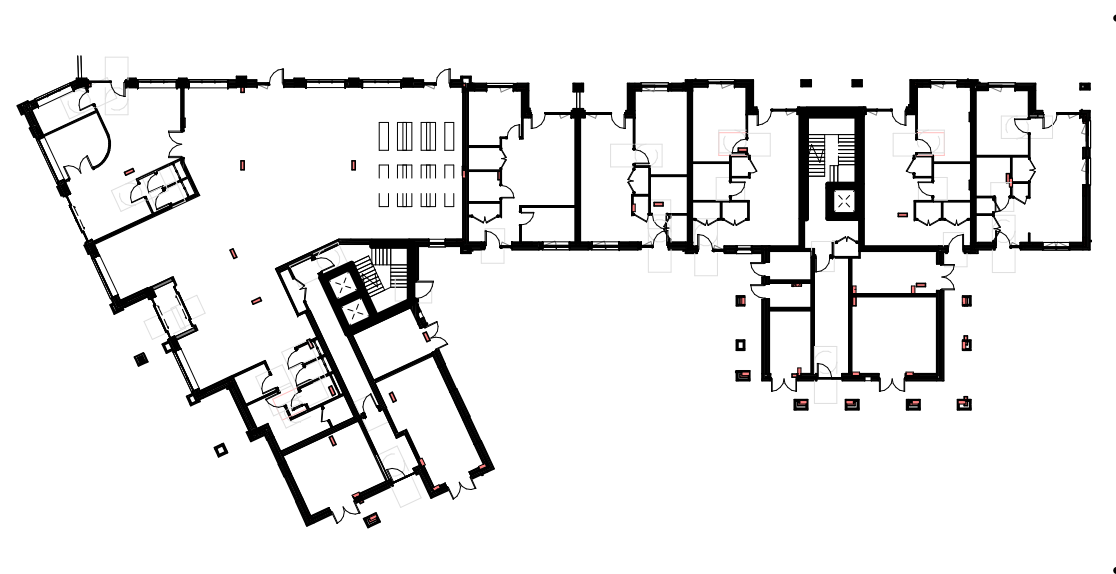
- 1 FACING BRICK BUFF BROWN STRETCHER BOND
- 2 FACING BRICK RED STRETCHER BOND
- 5 SEAM ZINC ROOFING
- 6 PPC ALUMINIUM COPING - DARK GREY
- 7 TIMBER ALUMINIUM COMPOSITE WINDOWS - COLOUR: DARK GREY
- 8 PPC STEEL FLAT BAR BALUSTRADE
- 11 ALUMINIUM RAINWATER DOWNPIPE AND HOPPER - COLOUR: DARK GREY
- 15 FACING BRICK DETAIL - DOUBLE SOLDIER COURSE
- 16 RECONSTITUTED STONE BAND



EXISTING SITE LOCATION PLAN 1:1250



02 NORTH ELEVATION with context
1 : 100



drawing title:
M9534- APL210

**YIEWSLEY FORMER POOL SITE
PROPOSED NORTH ELEVATION**

Issued for **PLANNING**

revision date
C 2023 July

GF window amended

revised by
GH

Yiewsley Housing and Library Sites

Space One, Hammersmith,
London, W6 0EA

hunters project number:	client project number:	drawn by:	checked by:	scale:
M9534	-	GV	JW	1:100 1 @ A0

All drawings are to be printed in colour.

Use figured dimensions only. All levels and dimensions to be checked on site. This drawing is to be read in conjunction with all other relevant drawings and specifications. Hunters is a trading name of Hunter & Partners Limited. © Hunter & Partners Limited. All rights reserved.

hunters
Space One Beadon Road
London W6 0EA
T 020 8237 8200
mail@hunters.co.uk
www.hunters.co.uk

model ref: C:\Revt Local\M9534-Otterfield Road_2023-06.g.hntf.rvt

C	2023 July	GH	GF window amended
B	2023 July	GH	Issued for Planning
A	2023 June	GH	Issued for coordination
Revision	Date	Revised by	

Revision History