

QODA

Yiewsley Sites, London Borough of Hillingdon

Daylight Analysis

20204.R1

Revision Summary

Issue	Document prepared			Document checked		
	Name	Signature	Date	Name	Signature	Date
R1	Lorenzo Patti		17/01/22	Rick Wheal	 <hr/>	17/01/22

QODA

Contents:

1	Introduction.....	4
2	Executive Summary	4
3	Methodology	4
4	Results	6
5	Appendix 1: Dwelling Reference.....	8

1 Introduction

QODA Consulting has been appointed by London Borough of Hillingdon to carry out the daylight assessment for the two sites within the Yiewsley planning application.

2 Executive Summary

The purpose of this design additional design note is to examine the internal daylight factor in the main living areas (i.e. lounges, bedrooms) of the Yiewsley Library Site (Falling Lane) and Yiewsley Former Pool Site (Otterfield Road).



Figure 1 – View of the Falling Lane Block [Library Site]

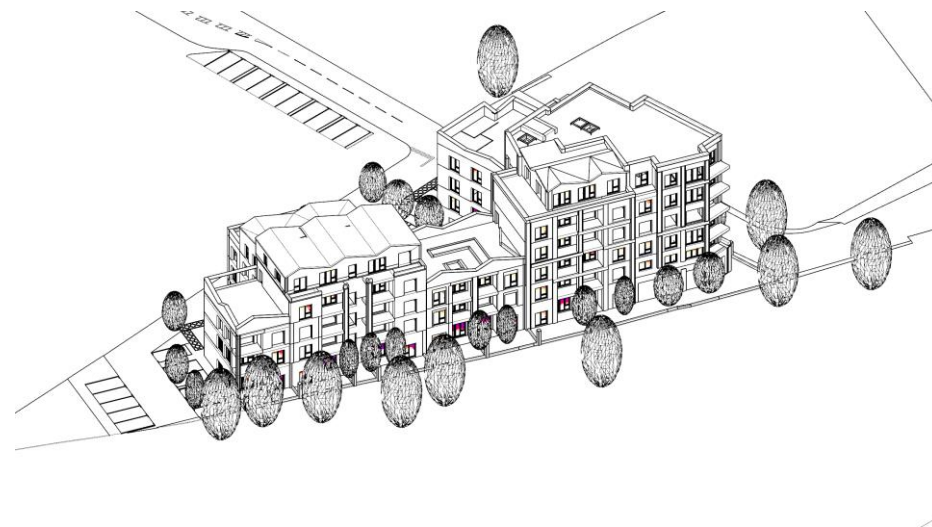


Figure 2 - View of the Otterfield Road Block [Former Pool Site]

This design note follows the assessment method described in the document: 'Site layout for daylight and sunlight: a good practice guide' (2nd edition), published by the Building Research Establishment (BRE).

For each residential block, a number of typical dwellings were assessed:

- No. 31 dwellings - Falling Lane Block
- No. 27 dwellings - Otterfield Block

The results show that most of the living areas achieve the minimum average daylight factor recommended by the BRE guidance. The overall pass rate is above 80 % for each individual site based on the sample dwelling assessed.

There are few lounges that do not achieve the minimum ADF of 1.5%. This is generally due to the internal layout of the room, the single aspect of the dwelling or the presence of balconies or landscaping. Trees were included in the analysis and, although they are affecting the daylight in some areas, their presence is beneficial in summer providing useful shading to reduce solar gains/overheating risk.

However, good daylight will be available at the end of every room, near the large windows in combination with balconies that provide outdoor space with sunlight. Where balconies are provided, they inherently restrict the daylight availability to the windows below. However, this trade-off is generally considered acceptable, and occupants will be able to enjoy the use of private amenity in the form of balconies.

3 Methodology

Daylight and sunlight calculations for the study area have been undertaken using computational methods and industry recognized modelling software, developed to consider the criteria outlined in the BRE guidelines; Rhinoceros + Ladybug Tools (Radiance) software.

It is important to note that with any modelling exercise there are assumptions and approximations that have to be made. Details of all assumptions made, and approximations made for the assessment are stated in this chapter as relevant. These include information on which the 3-D model was based, the calculation methodology employed, surface reflectance, receptors selection etc.

All results are based on the output from computer modelling software and should be taken as an indication of the likely final situation, but these conditions cannot be guaranteed.

3.1 Daylight

The Average Daylight Factor (ADF) is defined as the ratio of total daylight flux incident on the working plane to the area of the working plane, expressed as a percentage of the outdoor illuminance on a horizontal plane due to an unobstructed CIE Standard Overcast Sky.

For example, if the illuminance by daylight of a horizontal surface inside a room is 60 lux and the overcast sky is 6000 lux, then the daylight factor would be 1%. The modelling software calculates internal illuminance, considering any obstructions, the room size, window size and layout, room surface reflectance. This is one of the more complex and accurate methods of calculating internal illuminance. The British Standard for daylighting BS 8206-2:1996 and BRE Guidelines recommends the Average Daylight Factor for dwellings should be a minimum of:

- 1% for bedrooms
- 2% for kitchens
- 1.5% for lounges

3.2 Assumptions

The surface reflectance properties used in the daylight simulation are given below. These are typical values for standard constructions. Reflected light is included in the daylight calculation therefore surface reflectance can be important for improving the daylight levels.

The surface reflectance for each surface is:

- Floor = 20 % (Dark timber)
- Ceiling = 85 % (White Paint)
- Walls = 65 % (White/Light Grey)
- External Walls = 50 % (Brick)
- External Shading = 20 %
- Balcony Ceiling = 20 %

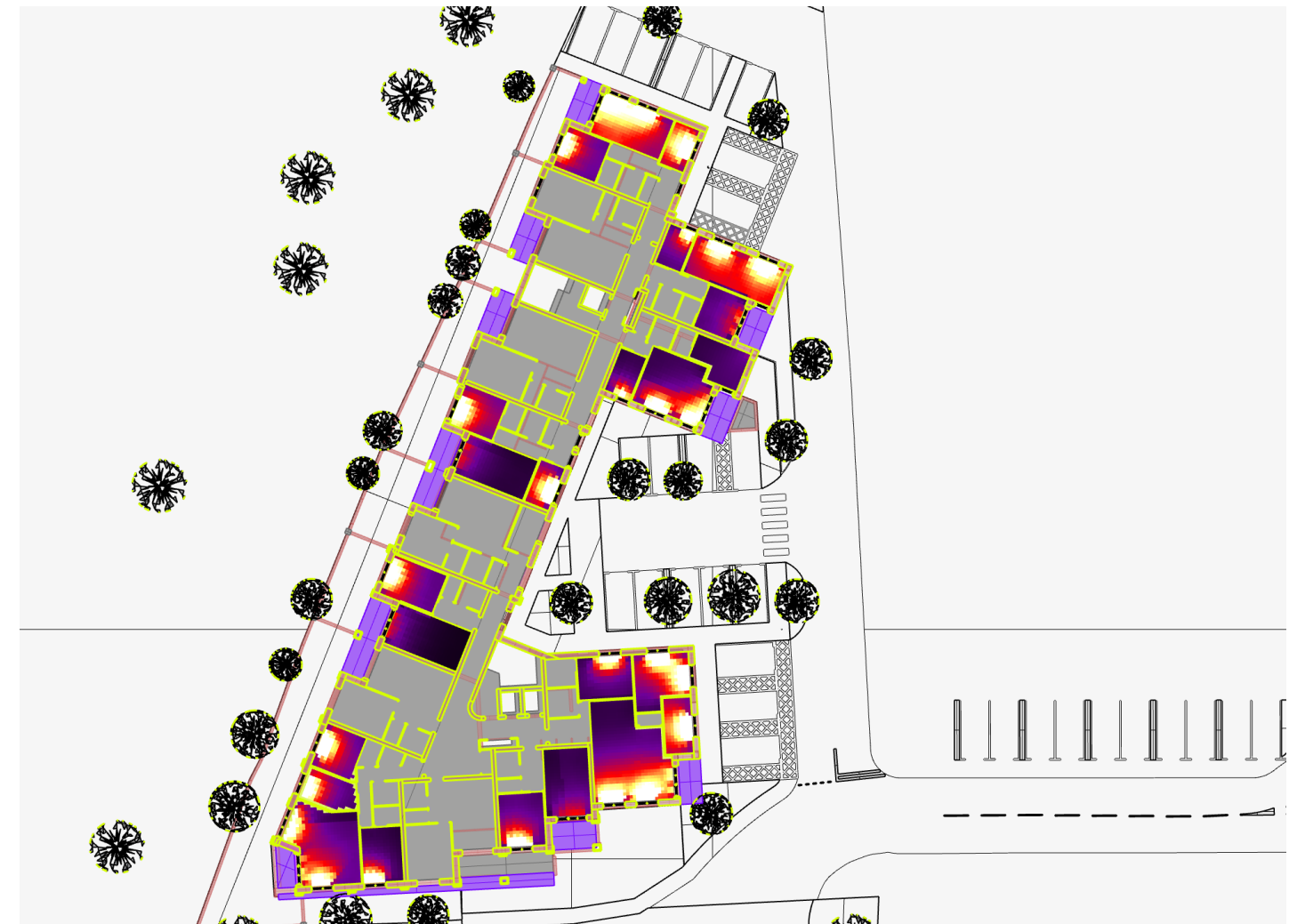
The assumed Light transmittance of the glass is 65%.

3.3 Assessment methodology

An Internal Daylight Analysis has been undertaken on the habitable rooms including the Bedrooms, Kitchens and Living Rooms, to assess whether there will be sufficient daylight levels to these habitable rooms. The Average Daylight Factors have been calculated for the habitable areas using a Standard CIE Overcast Sky, for 21st September (Autumn Equinox) at 12:00. This date is representative of the average light conditions throughout the year. For each room the ADF has been calculated for the 'Area of Interest'.

The working plane is set at 850 mm height from the floor level and the grid size is set to 250 mm.

Fig 1: Average Daylight Factor Plots for sample rooms



4 Results

Results summarizing the daylight access (ADF) to the habitable rooms of the Viewsley Site are presented below:

Falling Lane [Library Site]

[see appendix 1 for dwelling reference]

Floor	Dwelling Reference	Room Use	ADF (%)	Target ADF	Results
GF	GF_2Bed_01	Lounge	2.01	1.5	Pass
		Bedroom	1.1	1	Pass
		Bedroom	2.72	1	Pass
GF	GF_3Bed_02	Lounge	2.15	1.5	Pass
		Bedroom	0.87	1	Fail
		Bedroom	0.45	1	Fail
		Bedroom	1.26	1	Pass
GF	GF_1Bed_03	Lounge	0.69	1.5	Fail
		Bedroom	1.02	1	Pass
1st	1st_3Bed_04	Lounge	1.26	1.5	Pass
		Bedroom	0.96	1	Fail
		Bedroom	0.42	1	Fail
		Bedroom	3.51	1	Pass
1st	1st_1Bed_06	Lounge	1.82	1.5	Pass
		Bedroom	1.74	1	Pass
1st	1st_2Bed_07	Lounge	1.89	1.5	Pass
		Bedroom	1.14	1	Pass
		Bedroom	2.08	1	Pass
1st	1st_2Bed_08	Lounge	1.98	1.5	Pass
		Bedroom	1.19	1	Pass
		Bedroom	1.27	1	Pass
1st	1st_1Bed_09	Lounge	2.81	1.5	Pass
		Bedroom	2.75	1	Pass
1st	1st_1Bed_10	Lounge	1.11	1.5	Pass
		Bedroom	1.21	1	Pass
1st	1st_1Bed_11	Lounge	2.73	1.5	Pass
		Bedroom	1.76	1	Pass
1st	1st_2Bed_12	Lounge	0.47	1.5	Fail
		Bedroom	1.55	1	Pass
		Bedroom	1.32	1	Pass
1st	1st_3Bed_13	Lounge	0.41	1.5	Fail
		Bedroom	0.95	1	Fail
		Bedroom	0.89	1	Fail
		Bedroom	1.11	1	Pass
1st	1st_2Bed_14	Lounge	1.63	1.5	Pass
		Bedroom	1.14	1	Pass
		Bedroom	0.89	1	Fail
2nd	2nd_3Bed_15	Lounge	2.4	1.5	Pass
		Bedroom	2.34	1	Pass
		Bedroom	3.7	1	Pass
		Bedroom	2.31	1	Pass
2nd	2nd_1Bed_16	Lounge	1.47	1.5	Pass
		Bedroom	1.92	1	Pass
2nd	2nd_1Bed_17	Lounge	2.69	1.5	Pass
		Bedroom	1.92	1	Pass
2nd	2nd_2Bed_18	Lounge	0.76	1.5	Fail

Floor	Dwelling Reference	Room Use	ADF (%)	Target ADF	Results
		Bedroom	1.14	1	Pass
		Bedroom	1.82	1	Pass
3rd	3rd_3Bed_19	Lounge	3.22	1.5	Pass
		Bedroom	3.3	1	Pass
		Bedroom	1.89	1	Pass
		Bedroom	1.46	1	Pass
3rd	3rd_1Bed_20	Lounge	2.77	1.5	Pass
		Bedroom	3.63	1	Pass
3rd	3rd_3Bed_21	Lounge	2.22	1.5	Pass
		Bedroom	1.97	1	Pass
		Bedroom	2.89	1	Pass
		Bedroom	*	1	-
3rd	3rd_1Bed_23	Lounge	3.72	1.5	Pass
		Bedroom	2.06	1	Pass
3rd	3rd_2Bed_24	Lounge	4.27	1.5	Pass
		Bedroom	4.28	1	Pass
		Bedroom	1.92	1	Pass
3rd	3rd_2Bed_25	Lounge	2.14	1.5	Pass
		Bedroom	1.7	1	Pass
		Bedroom	*	1	-
3rd	3rd_2Bed_26	Lounge	4.16	1.5	Pass
		Bedroom	1.37	1	Pass
		Bedroom	1.54	1	Pass
3rd	3rd_2Bed_27	Lounge	1.74	1.5	Pass
		Bedroom	1.77	1	Pass
		Bedroom	1.55	1	Pass
3rd	3rd_3Bed_28	Lounge	1.81	1.5	Pass
		Bedroom	1.63	1	Pass
		Bedroom	1.46	1	Pass
		Bedroom	2.03	1	Pass
4th	4th_3Bed_29	Lounge	4.18	1.5	Pass
		Bedroom	1.75	1	Pass
4th	4th_2Bed_30	Lounge	1.99	1.5	Pass
		Bedroom	2.24	1	Pass
		Bedroom	1.75	1	Pass
4th	4th_1Bed_31	Lounge	3.25	1.5	Pass
		Bedroom	1	1	Pass

[*results not available]

Otterfield Road [Former Pool Site]

[see appendix 1 for dwelling reference]

Floor	Dwelling reference	Room Use	ADF (%)	Target ADF	Results
GF	GF_2Bed_01	Lounge	0.38	1.5	Fail
		Bedroom	1.25	1	Pass
GF	GF_1Bed_03	Lounge	1.19	1.5	Fail
		Bedroom	1.83	1	Pass
GF	GF_1Bed_04	Lounge	0.63	1.5	Fail
		Bedroom	1.37	1	Pass
	GF_1Bed_05	Lounge	0.45	1.5	Fail
		Bedroom	1.29	1	Pass
	GF_1Bed_06	Lounge	3.2	1.5	Pass
		Bedroom	1.25	1	Pass
1st	1st_3Bed_07	Lounge	2.18	1.5	Pass
		Bedroom	1.58	1	Pass
		Bedroom	2.52	1	Pass
		Bedroom	2.85	1	Pass
		Lounge	0.95	1.5	Fail
1st	1st_1Bed_08	Lounge	0.95	1.5	Fail
		Bedroom	1.97	1	Pass
1st	1st_3Bed_09	Lounge	2.37	1.5	Pass
		Bedroom	3.77	1	Pass
		Bedroom	1.69	1	Pass
		Bedroom	3.36	1	Pass
		Lounge	0.63	1.5	Fail
		Bedroom	2.41	1	Pass
1st	1st_2Bed_11	Lounge	0.82	1.5	Fail
		Bedroom	2.85	1	Pass
		Bedroom	3.64	1	Pass
1st	1st_2Bed_12	Lounge	3.84	1.5	Pass
		Bedroom	2.35	1	Pass
		Bedroom	4.33	1	Pass
1st	1st_2Bed_13	Lounge	3.38	1.5	Pass
		Bedroom	1.97	1	Pass
		Bedroom	1.35	1	Pass
1st	1st_2Bed_14	Lounge	2.27	1.5	Pass
		Bedroom	0.82	1	Fail
		Bedroom	1.44	1	Pass
2nd	2nd_3Bed_15	Lounge	3.33	1.5	Pass
		Bedroom	3.07	1	Pass
		Bedroom	2.8	1	Pass
2nd	2nd_3Bed_16	Lounge	1.32	1.5	Fail
		Bedroom	1.02	1	Pass
		Bedroom	4.16	1	Pass
		Bedroom	2.44	1	Pass
		Lounge	1.82	1.5	Pass
		Bedroom	1.83	1	Pass
2nd	2nd_3Bed_17	Bedroom	4.14	1	Pass
		Bedroom	3.25	1	Pass
		Lounge	1.06	1.5	Fail
2nd	2nd_1Bed_18	Lounge	1.06	1.5	Fail
		Bedroom	2.39	1	Pass
3rd	3rd_1Bed_19	Lounge	1.19	1.5	Pass
		Bedroom	3.29	1	Pass
3rd	3rd_1Bed_20	Lounge	1.17	1.5	Fail

Floor	Dwelling reference	Room Use	ADF (%)	Target ADF	Results
3rd	3rd_3Bed_21	Bedroom	2.14	1	Pass
		Lounge	3.24	1.5	Pass
		Bedroom	7.69	1	Pass
		Bedroom	3.91	1	Pass
		Bedroom	1.41	1	Pass
3rd	3rd_3Bed_22	Lounge	2.99	1.5	Pass
		Bedroom	4.46	1	Pass
		Bedroom	4.88	1	Pass
		Bedroom	2.4	1	Pass
		Lounge	3.78	1.5	Pass
		Bedroom	3.29	1	Pass
		Bedroom	2.59	1	Pass
		Bedroom	2.66	1	Pass
		Lounge	1.11	1.5	Fail
4th	4th_2Bed_24	Lounge	1.11	1.5	Fail
		Bedroom	3.34	1	Pass
		Bedroom	3.75	1	Pass
4th	4th_2Bed_25	Lounge	2.47	1.5	Pass
		Bedroom	5.92	1	Pass
		Bedroom	2.82	1	Pass
5th	5th_3Bed_26	Lounge	3	1.5	Pass
		Bedroom	1.18	1	Pass
		Bedroom	4.7	1	Pass
		Bedroom	*	1	-
		Lounge	2.09	1.5	Pass
		Bedroom	4.27	1	Pass
5th	5th_3Bed_27	Lounge	2.09	1.5	Pass
		Bedroom	4.27	1	Pass
		Bedroom	4.92	1	Pass
		Bedroom	*	1	-
		Bedroom	*	1	-

[*results not available]

5 Appendix 1: Dwelling Reference



01 00-Ground Floor Plan
1 : 100

COLOUR KEY

- 1bed
- 2bed
- 3bed
- 4bed
- Circulation
- Library
- Lift&Stairs
- Services



EXISTING SITE LOCATION PLAN 1:1250



02 01 First Floor Plan
1 : 100

COLOUR KEY

- 1bed
- 2bed
- 3bed
- 4bed
- Circulation
- Lift&Stairs
- Services
- Terrace

Shared Amenity Space

Level	Area
00 Ground Floor	157.3 m²
03 Third Floor Plan	212.5 m²
04 Fourth Floor Plan	91 m²
Grand total	460.8 m²

Unit Mix

Unit Type	Count
1Bed	20
1Bed Wheelchair	4
2Bed	13
3Bed	12
3Bed Wheelchair	1
Grand total: 50	

Net Sales Area			
Level	Number	Unit Type	Area
00 Ground Floor	06	1Bed Wheelchair	65.2 m²
00 Ground Floor	05	1Bed Wheelchair	69.4 m²
00 Ground Floor	04	1Bed Wheelchair	69.6 m²
00 Ground Floor	03	1Bed Wheelchair	65.8 m²
1Bed Wheelchair: 4			270 m²
00 Ground Floor	02	2Bed	68.8 m²
00 Ground Floor	01	2Bed	65.2 m²
2Bed: 2			131 m²
00 Ground Floor: 6			401 m²
01 First Floor Plan	08	1Bed	50.2 m²
01 First Floor Plan	09	1Bed	50.1 m²
01 First Floor Plan	11	1Bed	51.1 m²
01 First Floor Plan	18	1Bed	54.2 m²
01 First Floor Plan	15	1Bed	54.5 m²
01 First Floor Plan	12	1Bed	51.7 m²
1Bed: 6			311.6 m²
01 First Floor Plan	19	2Bed	65 m²
01 First Floor Plan	14	2Bed	65.1 m²
01 First Floor Plan	13	2Bed	65.1 m²
01 First Floor Plan	16	2Bed	63.6 m²
01 First Floor Plan	17	2Bed	63.7 m²
2Bed: 5			322.6 m²
01 First Floor Plan	10	3Bed	100.5 m²
3Bed: 1			100.5 m²
01 First Floor Plan	07	3Bed Wheelchair	114.6 m²
3Bed Wheelchair: 1			114.6 m²
01 First Floor Plan: 13			849.4 m²
02 Second Floor Plan	27	1Bed	54.3 m²
02 Second Floor Plan	30	1Bed	54.2 m²
02 Second Floor Plan	24	1Bed	51.1 m²
02 Second Floor Plan	21	1Bed	50.2 m²
02 Second Floor Plan	22	1Bed	50 m²
1Bed: 5			259.8 m²
02 Second Floor Plan	31	2Bed	65.1 m²
02 Second Floor Plan	29	2Bed	63.7 m²
02 Second Floor Plan	28	2Bed	63.6 m²
2Bed: 3			192.5 m²
02 Second Floor Plan	20	3Bed	114.6 m²
02 Second Floor Plan	23	3Bed	100.5 m²
02 Second Floor Plan	25	3Bed	103.5 m²
02 Second Floor Plan	26	3Bed	94.9 m²
3Bed: 4			413.6 m²
02 Second Floor Plan: 12			865.9 m²
03 Third Floor Plan	40	1Bed	54.2 m²
03 Third Floor Plan	38	1Bed	54.3 m²
03 Third Floor Plan	37	1Bed	50.7 m²
03 Third Floor Plan	36	1Bed	51.1 m²
03 Third Floor Plan	34	1Bed	50.1 m²
03 Third Floor Plan	33	1Bed	50.2 m²
1Bed: 6			310.7 m²
03 Third Floor Plan	39	3Bed	87.4 m²
03 Third Floor Plan	35	3Bed	100.5 m²
03 Third Floor Plan	32	3Bed	114.7 m²
3Bed: 3			302.6 m²
03 Third Floor Plan: 9			613.3 m²
04 Fourth Floor Plan	44	1Bed	51.1 m²
04 Fourth Floor Plan	41	1Bed	50.1 m²
04 Fourth Floor Plan	42	1Bed	50 m²
1Bed: 3			151.2 m²
04 Fourth Floor Plan	45	2Bed	64 m²
04 Fourth Floor Plan	46	2Bed	63.2 m²
04 Fourth Floor Plan	47	2Bed	63.1 m²
2Bed: 3			190.3 m²
04 Fourth Floor Plan	43	3Bed	100.5 m²
3Bed: 1			100.5 m²
04 Fourth Floor Plan: 7			442.1 m²
05 Fifth Floor Plan	50	3Bed	75.9 m²
05 Fifth Floor Plan	48	3Bed	80.8 m²
05 Fifth Floor Plan	49	3Bed	92 m²
3Bed: 3			249.5 m²
05 Fifth Floor Plan: 3			249.5 m²
Grand total: 50			3421.1 m²

Net Sales Area			
Level	Number	Unit Type	Area
00 Ground Floor			981.1 m²
01 First Floor Plan			1035.4 m²
02 Second Floor Plan			1035.8 m²
03 Third Floor Plan			785.6 m²
04 Fourth Floor Plan			588.4 m²
05 Fifth Floor Plan			338.8 m²
Grand total: 9			4733.1 m²

Private Amenity Space			
Level	Name	Area	
00 Ground Floor	1Bed Wheelchair	105.8 m²	
00 Ground Floor	2Bed	63.2 m²	
		169 m²	
01 First Floor Plan			
01 First Floor Plan	1Bed	53 m²	
01 First Floor Plan	2Bed	29.9 m²	
01 First Floor Plan	3Bed	5.8 m²	
01 First Floor Plan	3Bed Wheelchair	6.5 m²	
		95.2 m²	
02 Second Floor Plan			
02 Second Floor Plan	1Bed	36.7 m²	
02 Second Floor Plan	2Bed	18.8 m²	
02 Second Floor Plan	3Bed	34.7 m²	
		90.2 m²	
03 Third Floor Plan			
03 Third Floor Plan	1Bed	42.4 m²	
03 Third Floor Plan	3Bed	47.1 m²	
		89.5 m²	
04 Fourth Floor Plan			
04 Fourth Floor Plan	1Bed	35 m²	
04 Fourth Floor Plan	2Bed	30.7 m²	
04 Fourth Floor Plan	3Bed	6.4 m²	
		72.1 m²	
05 Fifth Floor Plan			
05 Fifth Floor Plan	3Bed	97.2 m²	
		97.2 m²	
Grand total			613.1 m²

drawing title:
M9534- HUN- DR- APL204

**YIEWSLEY FORMER POOL SITE
PROPOSED GROUND AND FIRST FLOOR PLAN**

ISSUED for **PLANNING**

revision: **C** 2021 October
Fire escape route updated.

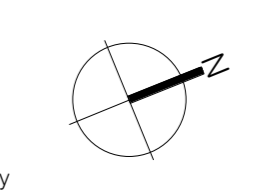
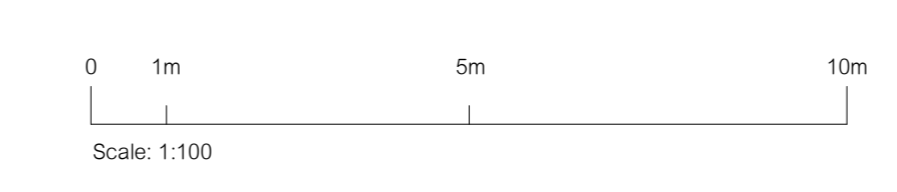
Yiewsley Housing and Library Sites
Space One, Hammersmith, London, W6 0EA

hunters project number: M9534 client project number: - drawn by: GV checked by: JW scale: 1: 100 @ A0

All drawings are to be printed in colour. Use figured dimensions only. All levels and dimensions to be checked on site. This drawing is to be used in conjunction with all other relevant drawings and specifications. Hunters is a trading name of Hunter & Partners Limited. © Hunter & Partners Limited. All rights reserved. Space One Beadon Road London W6 0EA T: 020 8227 8200 mail@hunters.co.uk www.hunters.co.uk

Revision History

Revision	Date	By	Reason
C	2021 October	GH	Fire escape route updated.
B	2021 October	GH	Issued for planning. Site location plan updated.
A	2021 September	GH	Issued for planning.



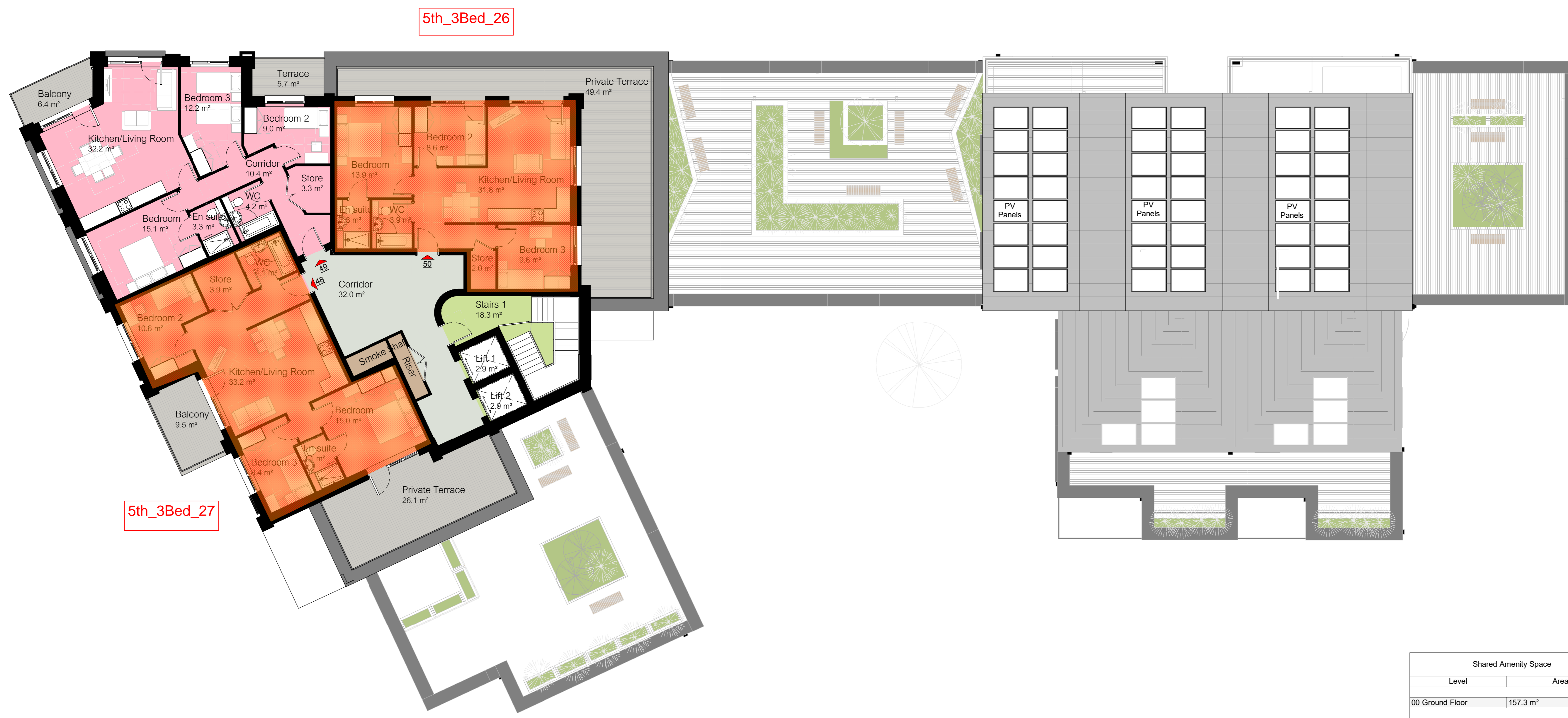
revised by: GH



01 04 Fourth Floor Plan
1 : 100

COLOUR KEY

- 1bed
- 2bed
- 3bed
- Circulation
- Lift&Stairs
- Services
- Terrace



02 05 Fifth Floor Plan
1 : 100

COLOUR KEY

- 3bed
- Circulation
- Lift&Stairs
- Services
- Terrace

Shared Amenity Space

Level	Area
00 Ground Floor	157.3 m ²
03 Third Floor Plan	212.5 m ²
04 Fourth Floor Plan	91 m ²
Grand total	460.8 m ²

Unit Mix

Unit Type	Count
1Bed	20
1Bed Wheelchair	4
2Bed	13
3Bed	12
3Bed Wheelchair	1
Grand total: 50	

Net Sales Area

Level	Number	Unit Type	Area
00 Ground Floor	06	1Bed Wheelchair	65.2 m ²
00 Ground Floor	05	1Bed Wheelchair	69.4 m ²
00 Ground Floor	04	1Bed Wheelchair	69.6 m ²
00 Ground Floor	03	1Bed Wheelchair	65.8 m ²
1Bed Wheelchair: 4			270 m ²
00 Ground Floor	02	2Bed	68.8 m ²
00 Ground Floor	01	2Bed	65.2 m ²
2Bed: 2			131 m ²
00 Ground Floor: 6			401 m ²
01 First Floor Plan	08	1Bed	50.2 m ²
01 First Floor Plan	09	1Bed	50.1 m ²
01 First Floor Plan	11	1Bed	51.1 m ²
01 First Floor Plan	18	1Bed	54.2 m ²
01 First Floor Plan	15	1Bed	54.3 m ²
01 First Floor Plan	12	1Bed	51.7 m ²
1Bed: 6			311.6 m ²
01 First Floor Plan	19	2Bed	65 m ²
01 First Floor Plan	14	2Bed	65.1 m ²
01 First Floor Plan	13	2Bed	65.1 m ²
01 First Floor Plan	16	2Bed	63.6 m ²
01 First Floor Plan	17	2Bed	63.7 m ²
2Bed: 5			322.6 m ²
01 First Floor Plan	10	3Bed	100.5 m ²
3Bed: 1			100.5 m ²
01 First Floor Plan	07	3Bed Wheelchair	114.6 m ²
3Bed Wheelchair: 1			114.6 m ²
01 First Floor Plan: 13			849.4 m ²
02 Second Floor Plan	27	1Bed	54.3 m ²
02 Second Floor Plan	30	1Bed	54.2 m ²
02 Second Floor Plan	24	1Bed	51.1 m ²
02 Second Floor Plan	21	1Bed	50.2 m ²
02 Second Floor Plan	22	1Bed	50 m ²
1Bed: 5			259.8 m ²
02 Second Floor Plan	31	2Bed	65.1 m ²
02 Second Floor Plan	29	2Bed	63.7 m ²
02 Second Floor Plan	28	2Bed	63.6 m ²
2Bed: 3			192.5 m ²
02 Second Floor Plan	20	3Bed	114.6 m ²
02 Second Floor Plan	23	3Bed	100.5 m ²
02 Second Floor Plan	25	3Bed	103.5 m ²
02 Second Floor Plan	26	3Bed	94.9 m ²
3Bed: 4			413.6 m ²
02 Second Floor Plan: 12			865.9 m ²
03 Third Floor Plan	40	1Bed	54.2 m ²
03 Third Floor Plan	38	1Bed	54.3 m ²
03 Third Floor Plan	37	1Bed	50.7 m ²
03 Third Floor Plan	36	1Bed	51.1 m ²
03 Third Floor Plan	34	1Bed	50.1 m ²
03 Third Floor Plan	33	1Bed	50.2 m ²
1Bed: 6			310.7 m ²
03 Third Floor Plan	39	3Bed	87.4 m ²
03 Third Floor Plan	35	3Bed	100.5 m ²
03 Third Floor Plan	32	3Bed	114.7 m ²
3Bed: 3			302.6 m ²
03 Third Floor Plan: 9			613.3 m ²
04 Fourth Floor Plan	44	1Bed	51.1 m ²
04 Fourth Floor Plan	41	1Bed	50.1 m ²
04 Fourth Floor Plan	42	1Bed	50 m ²
1Bed: 3			151.2 m ²
04 Fourth Floor Plan	45	2Bed	64 m ²
04 Fourth Floor Plan	46	2Bed	63.2 m ²
04 Fourth Floor Plan	47	2Bed	63.1 m ²
2Bed: 3			190.3 m ²
04 Fourth Floor Plan	43	3Bed	100.5 m ²
3Bed: 1			100.5 m ²
04 Fourth Floor Plan: 7			442.1 m ²
05 Fifth Floor Plan	50	3Bed	75.9 m ²
05 Fifth Floor Plan	48	3Bed	80.8 m ²
05 Fifth Floor Plan	49	3Bed	83 m ²
3Bed: 3			249.5 m ²
05 Fifth Floor Plan: 3			249.5 m ²
Grand total: 50			3421.1 m ²

Net Sales Area

Level	Number	Unit Type	Area
00 Ground Floor			981.1 m ²
01 First Floor Plan			1035.4 m ²
02 Second Floor Plan			1035.8 m ²
03 Third Floor Plan			785.6 m ²
04 Fourth Floor Plan			568.4 m ²
05 Fifth Floor Plan			336.8 m ²
Grand total: 9			4733.1 m ²

Private Amenity Space

Level	Name	Area
00 Ground Floor	1Bed Wheelchair	105.8 m ²
00 Ground Floor	2Bed	63.2 m ²
		169 m ²
01 First Floor Plan		53 m ²
01 First Floor Plan	2Bed	29.9 m ²
01 First Floor Plan	3Bed	5.8 m ²
01 First Floor Plan	3Bed Wheelchair	6.5 m ²
		95.2 m ²
02 Second Floor Plan		36.7 m ²
02 Second Floor Plan	1Bed	18.8 m ²
02 Second Floor Plan	2Bed	34.7 m ²
02 Second Floor Plan	3Bed	90.2 m ²
03 Third Floor Plan		42.4 m ²
03 Third Floor Plan	1Bed	47.1 m ²
03 Third Floor Plan	3Bed	89.5 m ²
04 Fourth Floor Plan		35 m ²
04 Fourth Floor Plan	1Bed	30.7 m ²
04 Fourth Floor Plan	2Bed	6.4 m ²
04 Fourth Floor Plan	3Bed	72.1 m ²
05 Fifth Floor Plan		97.2 m ²
05 Fifth Floor Plan	3Bed	97.2 m ²
Grand total		613.1 m ²

drawing title:
M9534- APL206

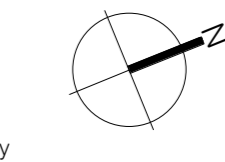
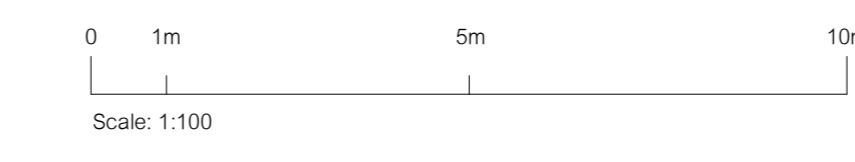
**YIEWSLEY FORMER POOL SITE
PROPOSED FOURTH AND FIFTH FLOOR PLAN**

ISSUED for **PLANNING**
revision: 1
date: 2021 October
Fire escape route updated.

Yiewsley Housing and Library Sites
Space One, Hammersmith, London, W6 0EA

hunters project number: M9534 client project number: - drawn by: GV checked by: JW scale: 1 : 100 @ A0

All drawings are to be printed in colour. Use figured dimensions only. All levels and dimensions to be checked on site. This drawing is to be used in conjunction with all other relevant drawings and specifications. Hunters is a trading name of Hunter & Partners Limited. © Hunter & Partners Limited. All rights reserved. Space One Beadon Road London W6 0EA. T: 020 8271 8200. mail@hunters.co.uk www.hunters.co.uk



Revision History

Revision	Date	By	Reason
C	2021 October	GH	Fire escape route updated.
B	2021 October	GH	Issued for planning. Site location plan updated.
A	2021 September	GH	Issued for planning.
Revision	Date	By	Reason



GF_1Bed_01

GF_1Bed_03

GF_3Bed_02

COLOUR KEY

- 1 Bedroom Flat
- 2 Bedroom Flat
- 3 Bedroom Flat
- Circulation
- Lift&Stairs
- Services

01 00-Ground Floor Plan
1 : 100

Shared Amenity Space		TOTAL GIA		Unit Mix	
Level	Area	Level	Area	Unit Type	Count
00 Ground Floor FFL	170 m²	00 Ground Floor FFL	656 m²	1Bed	18
03-Third Floor Plan	40.6 m²	01 First Floor FFL	1372.8 m²	2Bed	27
04-Fourth Floor FFL	417.2 m²	02 Second Floor FFL	1256.3 m²	2Bed Wheelchair	3
Grand total	627.7 m²	03-Third Floor Plan	991.4 m²	3Bed	7
		04-Fourth Floor FFL	380.6 m²	3Bed Wheelchair	2
		Grand total	4657 m²		



Net Sales Area			
Level	Number	Unit Type	Area
00 Ground Floor FFL	06	1Bed	56.2 m²
1Bed: 1			56.2 m²
00 Ground Floor FFL	02	2Bed	42.1 m²
00 Ground Floor FFL	03	2Bed	42.1 m²
00 Ground Floor FFL	04	2Bed	10.1 m²
00 Ground Floor FFL	05	2Bed	10.1 m²
00 Ground Floor FFL	06	2Bed	10.1 m²
00 Ground Floor FFL	07	2Bed	10.1 m²
2Bed: 5			124.7 m²
00 Ground Floor FFL	09	3Bed	94.4 m²
00 Ground Floor FFL	01	3Bed	34.8 m²
3Bed: 2			129.2 m²
00 Ground Floor FFL	9		310.1 m²
01 First Floor FFL	14	1Bed	51.5 m²
01 First Floor FFL	16	1Bed	51.5 m²
01 First Floor FFL	10	1Bed	55.9 m²
1Bed: 4			210 m²
01 First Floor FFL	15	2Bed	70.5 m²
01 First Floor FFL	17	2Bed	69.5 m²
01 First Floor FFL	11	2Bed	68.6 m²
01 First Floor FFL	02	2Bed	66.5 m²
01 First Floor FFL	03	2Bed	56.5 m²
01 First Floor FFL	04	2Bed	71.9 m²
01 First Floor FFL	05	2Bed	71.9 m²
01 First Floor FFL	06	2Bed	71.9 m²
01 First Floor FFL	07	2Bed	69.6 m²
2Bed: 9			608.7 m²
01 First Floor FFL	13	2Bed Wheelchair	78.5 m²
2Bed Wheelchair: 1			78.5 m²
01 First Floor FFL	01	3Bed	86.9 m²
3Bed: 1			86.9 m²
01 First Floor FFL	12	3Bed Wheelchair	96.9 m²
3Bed Wheelchair: 1			96.9 m²
01 First Floor FFL	16		1079 m²
02 Second Floor FFL	19	1Bed	55.9 m²
02 Second Floor FFL	20	1Bed	55.5 m²
02 Second Floor FFL	29	1Bed	51.6 m²
02 Second Floor FFL	31	1Bed	51.4 m²
02 Second Floor FFL	33	1Bed	51.1 m²
1Bed: 5			265.5 m²
02 Second Floor FFL	22	2Bed	67.9 m²
02 Second Floor FFL	23	2Bed	64.6 m²
02 Second Floor FFL	24	2Bed	64.6 m²
02 Second Floor FFL	26	2Bed	64.6 m²
02 Second Floor FFL	28	2Bed	62.3 m²
02 Second Floor FFL	30	2Bed	70.5 m²
02 Second Floor FFL	32	2Bed	69.5 m²
2Bed: 7			483.9 m²
02 Second Floor FFL	27	2Bed Wheelchair	78.5 m²
2Bed Wheelchair: 1			78.5 m²
02 Second Floor FFL	21	3Bed	75.6 m²
3Bed: 1			75.6 m²
02 Second Floor FFL	25	3Bed Wheelchair	96.9 m²
3Bed Wheelchair: 1			96.9 m²
02 Second Floor FFL	15		980.5 m²
03-Third Floor Plan	35	1Bed	51.2 m²
03-Third Floor Plan	37	1Bed	50.7 m²
03-Third Floor Plan	39	1Bed	50.7 m²

Net Sales Area			
Level	Number	Unit Type	Area
03-Third Floor Plan	41	1Bed	50.7 m²
03-Third Floor Plan	45	1Bed	50.1 m²
1Bed: 5			253.3 m²
03-Third Floor Plan	42	2Bed	61.2 m²
03-Third Floor Plan	43	2Bed	59.4 m²
03-Third Floor Plan	44	2Bed	62.5 m²
2Bed: 3			183.1 m²
03-Third Floor Plan	40	2Bed Wheelchair	72.6 m²
2Bed Wheelchair: 1			72.6 m²
03-Third Floor Plan	38	3Bed	91.5 m²
03-Third Floor Plan	36	3Bed	87.4 m²
03-Third Floor Plan	34	3Bed	84.5 m²
3Bed: 3			263.5 m²
03-Third Floor Plan	12		772.5 m²
04-Fourth Floor FFL	46	1Bed	56.6 m²
04-Fourth Floor FFL	47	1Bed	48.8 m²
04-Fourth Floor FFL	50	1Bed	55.5 m²
1Bed: 3			161 m²
04-Fourth Floor FFL	48	2Bed	64.3 m²
04-Fourth Floor FFL	49	2Bed	62.9 m²
2Bed: 2			127.1 m²
04-Fourth Floor FFL	5		288 m²
Grand total: 57			3430.1 m²

Private Amenity Space		
Level	Name	Area
00 Ground Floor FFL		
00 Ground Floor FFL	1Bed	11.6 m²
00 Ground Floor FFL	2Bed	56.3 m²
00 Ground Floor FFL	3Bed	86.3 m²
		154.2 m²
01 First Floor FFL		
01 First Floor FFL	1Bed	23.3 m²
01 First Floor FFL	2Bed	55.2 m²
01 First Floor FFL	2Bed	5.5 m²
01 First Floor FFL	Wheelchair	5.7 m²
01 First Floor FFL	3Bed	6.5 m²
01 First Floor FFL	Wheelchair	96.1 m²
02 Second Floor FFL		
02 Second Floor FFL	1Bed	29.3 m²
02 Second Floor FFL	2Bed	55.4 m²
02 Second Floor FFL	2Bed	5.5 m²
02 Second Floor FFL	Wheelchair	64.1 m²
02 Second Floor FFL	3Bed	6.5 m²
02 Second Floor FFL	Wheelchair	160.7 m²
03-Third Floor Plan		
03-Third Floor Plan	1Bed	112.9 m²
03-Third Floor Plan	2Bed	27.5 m²
03-Third Floor Plan	3Bed	8.7 m²
03-Third Floor Plan	3Bed	63.2 m²
03-Third Floor Plan	3Bed	212.3 m²
04-Fourth Floor FFL		
04-Fourth Floor FFL	1Bed	53.1 m²
04-Fourth Floor FFL	2Bed	39.9 m²
		92.9 m²
Grand total		716.2 m²

drawing title: **M9534- APL106**

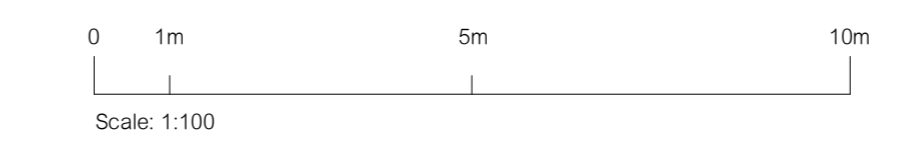
**YIEWSLEY LIBRARY SITE
PROPOSED GROUND FLOOR PLAN**

Issued for **PLANNING**
revision: 01
date: 2021 November
Fire escape route updated

Yiewsley Housing and Library Sites
Space One, Hammersmith, London, W6 0EA

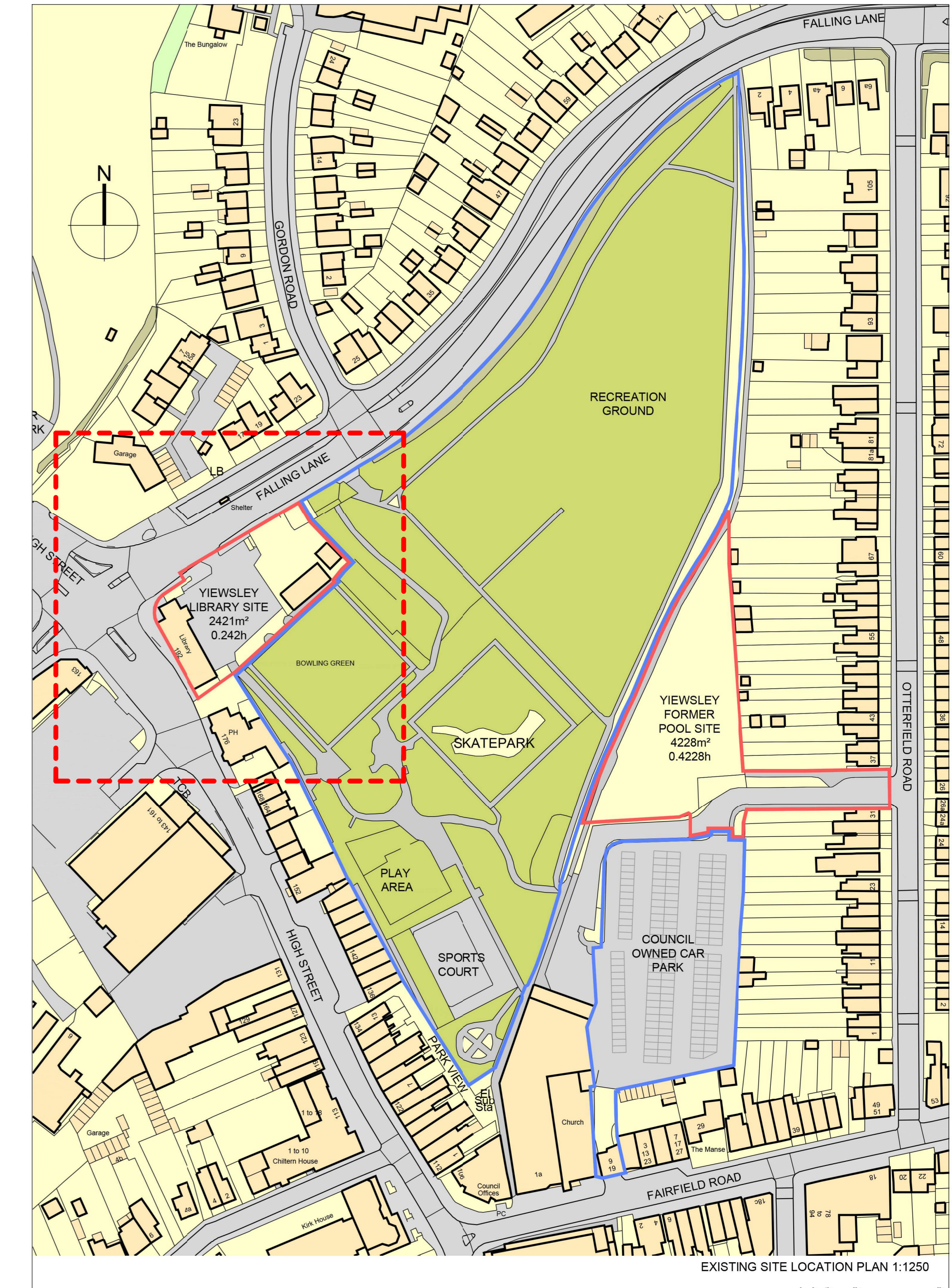
hunters project number: M9534 client project number: - drawn by: GH checked by: JW scale: 1 : 100 @ A0

All drawings are to be printed in colour. Use figure dimensions only. All levels and dimensions to be checked on site. This drawing is to be used in conjunction with all other relevant drawings and specifications. Hunters is a trading name of Hunters & Partners Limited. © Hunter & Partners Limited. All rights reserved. Space One Beadon Road London W6 0EA T: 020 827 8200 mail@hunters.co.uk www.hunters.co.uk



Revision History

Revision	Date	By	Reason
01	2021 November	GH	Fire escape route updated
02	2021 October	GH	Issued for planning. Site location plan updated.
03	2021 September	GH	Issued for planning.



Net Sales Area			
Level	Number	Unit Type	Area
00 Ground Floor FFL	06	1Bed	56.2 m²
1Bed: 1			56.2 m²
00 Ground Floor FFL	02	2Bed	42.1 m²
00 Ground Floor FFL	03	2Bed	42.1 m²
00 Ground Floor FFL	04	2Bed	10.1 m²
00 Ground Floor FFL	05	2Bed	10.1 m²
00 Ground Floor FFL	06	2Bed	10.1 m²
00 Ground Floor FFL	07	2Bed	10.1 m²
2Bed: 5			124.7 m²
00 Ground Floor FFL	09	3Bed	94.4 m²
00 Ground Floor FFL	01	3Bed	34.8 m²
3Bed: 2			129.2 m²
00 Ground Floor FFL: 9			310.1 m²
01 First Floor FFL	14	1Bed	51.5 m²
01 First Floor FFL	18	1Bed	51.1 m²
01 First Floor FFL	16	1Bed	51.5 m²
01 First Floor FFL	10	1Bed	55.9 m²
1Bed: 4			210 m²
01 First Floor FFL	15	2Bed	70.9 m²
01 First Floor FFL	11	2Bed	68.6 m²
01 First Floor FFL	02	2Bed	56.5 m²
01 First Floor FFL	03	2Bed	56.5 m²
01 First Floor FFL	04	2Bed	71.9 m²
01 First Floor FFL	05	2Bed	71.9 m²
01 First Floor FFL	06	2Bed	71.9 m²
01 First Floor FFL	07	2Bed	69.6 m²
2Bed: 9			606.7 m²
01 First Floor FFL	13	2Bed	76.5 m²
2Bed Wheelchair: 1			78.5 m²
01 First Floor FFL	01	3Bed	86.9 m²
3Bed: 1			86.9 m²
01 First Floor FFL	12	3Bed	96.9 m²
3Bed Wheelchair: 1			96.9 m²
01 First Floor FFL: 16			1079 m²
02 Second Floor FFL	19	1Bed	55.9 m²
02 Second Floor FFL	20	1Bed	55.5 m²
02 Second Floor FFL	29	1Bed	51.6 m²
02 Second Floor FFL	31	1Bed	51.4 m²
02 Second Floor FFL	33	1Bed	51.1 m²
1Bed: 5			265.5 m²
02 Second Floor FFL	22	2Bed	67.9 m²
02 Second Floor FFL	23	2Bed	64.6 m²
02 Second Floor FFL	24	2Bed	64.6 m²
02 Second Floor FFL	26	2Bed	64.6 m²
02 Second Floor FFL	28	2Bed	62.3 m²
02 Second Floor FFL	30	2Bed	70.5 m²
02 Second Floor FFL	32	2Bed	69.5 m²
2Bed: 7			443.9 m²
02 Second Floor FFL	27	2Bed	76.5 m²
2Bed Wheelchair: 1			76.5 m²
02 Second Floor FFL	21	3Bed	75.6 m²
3Bed: 1			75.6 m²
02 Second Floor FFL	25	3Bed	96.9 m²
3Bed Wheelchair: 1			96.9 m²
02 Second Floor FFL: 15			880.5 m²
03 Third Floor Plan	35	1Bed	51.2 m²
03 Third Floor Plan	37	1Bed	50.7 m²
03 Third Floor Plan	39	1Bed	50.7 m²
Grand total: 57			716.2 m²

Net Sales Area			
Level	Number	Unit Type	Area
03 Third Floor Plan	41	1Bed	50.7 m²
03 Third Floor Plan	45	1Bed	50.1 m²
1Bed: 5			253.3 m²
03 Third Floor Plan	42	2Bed	61.2 m²
03 Third Floor Plan	43	2Bed	59.4 m²
03 Third Floor Plan	44	2Bed	62.5 m²
2Bed: 3			183.1 m²
03 Third Floor Plan	40	2Bed	72.6 m²
2Bed Wheelchair: 1			72.6 m²
03 Third Floor Plan	38	3Bed	91.5 m²
03 Third Floor Plan	36	3Bed	87.4 m²
03 Third Floor Plan	34	3Bed	84.5 m²
3Bed: 3			263.5 m²
03 Third Floor Plan: 12			772.5 m²
04 Fourth Floor FFL	46	1Bed	56.6 m²
04 Fourth Floor FFL	47	1Bed	48.8 m²
04 Fourth Floor FFL	50	1Bed	55.5 m²
1Bed: 3			161 m²
04 Fourth Floor FFL	48	2Bed	64.3 m²
04 Fourth Floor FFL	49	2Bed	62.9 m²
2Bed: 2			127.1 m²
04 Fourth Floor FFL: 5			288 m²
Grand total: 57			3430.1 m²

Private Amenity Space		
Level	Name	Area
00 Ground Floor FFL	1Bed	11.6 m²
00 Ground Floor FFL	2Bed	56.3 m²
00 Ground Floor FFL	3Bed	86.3 m²
		154.2 m²
01 First Floor FFL	1Bed	23.3 m²
01 First Floor FFL	2Bed	85.2 m²
01 First Floor FFL	2Bed	5.5 m²
01 First Floor FFL	Wheelchair	5.7 m²
01 First Floor FFL	3Bed	6.5 m²
		96.1 m²
02 Second Floor FFL		
02 Second Floor FFL	1Bed	29.3 m²
02 Second Floor FFL	2Bed	55.4 m²
02 Second Floor FFL	2Bed	5.5 m²
02 Second Floor FFL	Wheelchair	64.1 m²
02 Second Floor FFL	3Bed	6.5 m²
02 Second Floor FFL	Wheelchair	160.7 m²
03 Third Floor Plan		
03 Third Floor Plan	1Bed	112.9 m²
03 Third Floor Plan	2Bed	27.5 m²
03 Third Floor Plan	2Bed	8.7 m²
03 Third Floor Plan	3Bed	63.2 m²
03 Third Floor Plan	3Bed	212.3 m²
04 Fourth Floor FFL		
04 Fourth Floor FFL	1Bed	53.1 m²
04 Fourth Floor FFL	2Bed	39.9 m²
		92.9 m²
Grand total		716.2 m²

COLOUR KEY

- 1 Bedroom Flat
- 2 Bedroom Flat
- 3 Bedroom Flat
- Circulation
- Li&Stairs
- Services
- Terrace

01 01-First Floor Plan
1:100

Shared Amenity Space		TOTAL GIA		Unit Mix	
Level	Area	Level	Area	Unit Type	Count
00 Ground Floor FFL	170 m²	00 Ground Floor FFL	656 m²	1Bed	18
03 Third Floor Plan	40.6 m²	01 First Floor FFL	1372.8 m²	2Bed	27
04 Fourth Floor FFL	417.2 m²	02 Second Floor FFL	1256.3 m²	2Bed Wheelchair	3
Grand total	627.7 m²	03 Third Floor Plan	991.4 m²	3Bed	7
		04 Fourth Floor FFL	380.6 m²	3Bed Wheelchair	2
		Grand total	4657 m²		
				Grand total: 57	

drawing title: **M9534- APL107**

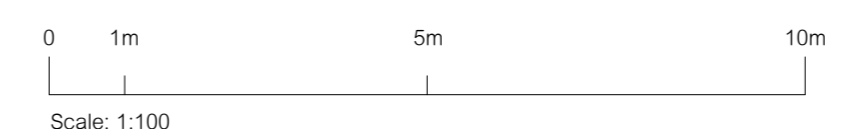
**YIEWSLEY LIBRARY SITE
PROPOSED FIRST FLOOR PLAN**

Issued for **PLANNING**
revision: 01
date: 2021 November
Fire escape route updated

Yiewsley Housing and Library Sites
Space One, Hammersmith, London, W6 0EA

hunters project number: M9534 client project number: GH drawn by: JW checked by: JW scale: 1:100 @ A0

All drawings are to be printed in colour. Use figured dimensions only. All levels and dimensions to be checked on site. This drawing is to be read in conjunction with all other relevant drawings and specifications. Hunters is a trading name of Hunter & Partners Limited. © Hunter & Partners Limited. All rights reserved. Space One Beaton Road London W6 0EA T: 020 8237 8200 mail@hunters.co.uk www.hunters.co.uk



Revision History

Revision	Date	By	Reason
C	2021 November	GH	Fire escape route updated
B	2021 October	GH	Issues for planning. Site location plan updated.
A	2021 September	GH	Issues for planning.
01	2021 September	GH	Issues for planning.



2nd_1Bed_17

2nd_1Bed_16

2nd_3Bed_15

2nd_2Bed_18

COLOUR KEY

- 1 Bedroom Flat
- 2 Bedroom Flat
- 3 Bedroom Flat
- Circulation
- Lifts/Stairs
- Services
- Terrace

01 02-Second Floor Plan
1:100

Shared Amenity Space		TOTAL GIA		Unit Mix	
Level	Area	Level	Area	Unit Type	Count
00 Ground Floor FFL	170 m ²	00 Ground Floor FFL	656 m ²	1Bed	18
03-Third Floor Plan	40.6 m ²	01 First Floor FFL	1372.8 m ²	2Bed	27
04-Fourth Floor FFL	417.2 m ²	02 Second Floor FFL	1256.3 m ²	2Bed Wheelchair	3
Grand total	627.7 m ²	03-Third Floor Plan	991.4 m ²	3Bed	7
		04 Fourth Floor FFL	380.6 m ²	3Bed Wheelchair	2
		Grand total	4657 m ²		
				Grand total: 57	



Net Sales Area			
Level	Number	Unit Type	Area
00 Ground Floor FFL	08	1Bed	56.2 m ²
1Bed: 1			56.2 m ²
00 Ground Floor FFL	02	2Bed	42.1 m ²
00 Ground Floor FFL	03	2Bed	42.1 m ²
00 Ground Floor FFL	04	2Bed	10.1 m ²
00 Ground Floor FFL	05	2Bed	10.1 m ²
00 Ground Floor FFL	06	2Bed	10.1 m ²
00 Ground Floor FFL	07	2Bed	10.1 m ²
2Bed: 5			124.7 m ²
00 Ground Floor FFL	09	3Bed	94.4 m ²
00 Ground Floor FFL	01	3Bed	34.8 m ²
3Bed: 2			129.2 m ²
00 Ground Floor FFL	9		310.1 m ²
01 First Floor FFL	14	1Bed	51.5 m ²
01 First Floor FFL	18	1Bed	51.1 m ²
01 First Floor FFL	16	1Bed	51.5 m ²
01 First Floor FFL	10	1Bed	55.9 m ²
1Bed: 4			210 m ²
01 First Floor FFL	15	2Bed	70.9 m ²
01 First Floor FFL	17	2Bed	69.9 m ²
01 First Floor FFL	11	2Bed	68.6 m ²
01 First Floor FFL	02	2Bed	56.5 m ²
01 First Floor FFL	03	2Bed	56.5 m ²
01 First Floor FFL	04	2Bed	71.9 m ²
01 First Floor FFL	05	2Bed	71.9 m ²
01 First Floor FFL	06	2Bed	71.9 m ²
01 First Floor FFL	07	2Bed	69.6 m ²
2Bed: 9			606.7 m ²
01 First Floor FFL	13	2Bed	76.5 m ²
2Bed Wheelchair: 1			78.5 m ²
01 First Floor FFL	01	3Bed	86.9 m ²
3Bed: 1			86.9 m ²
01 First Floor FFL	12	3Bed	96.9 m ²
3Bed Wheelchair: 1			96.9 m ²
01 First Floor FFL	16	3Bed	107.9 m ²
02 Second Floor FFL	19	1Bed	55.9 m ²
02 Second Floor FFL	20	1Bed	55.5 m ²
02 Second Floor FFL	29	1Bed	51.6 m ²
02 Second Floor FFL	31	1Bed	51.4 m ²
02 Second Floor FFL	33	1Bed	51.1 m ²
1Bed: 5			265.5 m ²
02 Second Floor FFL	22	2Bed	67.9 m ²
02 Second Floor FFL	23	2Bed	64.6 m ²
02 Second Floor FFL	24	2Bed	64.6 m ²
02 Second Floor FFL	26	2Bed	64.6 m ²
02 Second Floor FFL	28	2Bed	62.3 m ²
02 Second Floor FFL	30	2Bed	70.5 m ²
02 Second Floor FFL	32	2Bed	69.5 m ²
2Bed: 7			443.9 m ²
02 Second Floor FFL	27	2Bed	76.5 m ²
2Bed Wheelchair: 1			76.5 m ²
02 Second Floor FFL	21	3Bed	75.6 m ²
3Bed: 1			75.6 m ²
02 Second Floor FFL	25	3Bed	96.9 m ²
3Bed Wheelchair: 1			96.9 m ²
02 Second Floor FFL	15	3Bed	880.5 m ²
03-Third Floor Plan	35	1Bed	51.2 m ²
03-Third Floor Plan	37	1Bed	50.7 m ²
03-Third Floor Plan	39	1Bed	50.7 m ²

Net Sales Area			
Level	Number	Unit Type	Area
03-Third Floor Plan	41	1Bed	50.7 m ²
03-Third Floor Plan	45	1Bed	50.1 m ²
1Bed: 5			253.3 m ²
03-Third Floor Plan	42	2Bed	61.2 m ²
03-Third Floor Plan	43	2Bed	59.4 m ²
03-Third Floor Plan	44	2Bed	62.5 m ²
2Bed: 3			183.1 m ²
03-Third Floor Plan	40	2Bed	72.6 m ²
2Bed Wheelchair: 1			72.6 m ²
03-Third Floor Plan	38	3Bed	91.5 m ²
03-Third Floor Plan	36	3Bed	87.4 m ²
03-Third Floor Plan	34	3Bed	84.5 m ²
3Bed: 3			263.5 m ²
03-Third Floor Plan	12		772.5 m ²
04-Fourth Floor FFL	46	1Bed	56.6 m ²
04-Fourth Floor FFL	47	1Bed	48.8 m ²
04-Fourth Floor FFL	50	1Bed	55.5 m ²
1Bed: 3			161 m ²
04-Fourth Floor FFL	48	2Bed	64.3 m ²
04-Fourth Floor FFL	49	2Bed	62.9 m ²
2Bed: 2			127.1 m ²
04-Fourth Floor FFL	5		289 m ²
Grand total: 57			3430.1 m ²

Private Amenity Space		
Level	Name	Area
00 Ground Floor FFL		
00 Ground Floor FFL	1Bed	11.6 m ²
00 Ground Floor FFL	2Bed	56.3 m ²
00 Ground Floor FFL	3Bed	86.3 m ²
		154.2 m ²
01 First Floor FFL		
01 First Floor FFL	1Bed	23.3 m ²
01 First Floor FFL	2Bed	55.2 m ²
01 First Floor FFL	2Bed	5.5 m ²
01 First Floor FFL	Wheelchair	5.7 m ²
01 First Floor FFL	3Bed	6.5 m ²
01 First Floor FFL	Wheelchair	96.1 m ²
02 Second Floor FFL		
02 Second Floor FFL	1Bed	29.3 m ²
02 Second Floor FFL	2Bed	55.4 m ²
02 Second Floor FFL	2Bed	5.5 m ²
02 Second Floor FFL	Wheelchair	5.5 m ²
02 Second Floor FFL	3Bed	64.1 m ²
02 Second Floor FFL	3Bed	6.5 m ²
02 Second Floor FFL	Wheelchair	160.7 m ²
03-Third Floor Plan		
03-Third Floor Plan	1Bed	112.9 m ²
03-Third Floor Plan	2Bed	27.5 m ²
03-Third Floor Plan	2Bed	8.7 m ²
03-Third Floor Plan	3Bed	63.2 m ²
03-Third Floor Plan	3Bed	212.3 m ²
04-Fourth Floor FFL		
04-Fourth Floor FFL	1Bed	53.1 m ²
04-Fourth Floor FFL	2Bed	39.9 m ²
		92.9 m ²
Grand total		716.2 m ²

drawing title: **M9534- APL108**

**YIEWSLEY LIBRARY SITE
PROPOSED SECOND FLOOR PLAN**

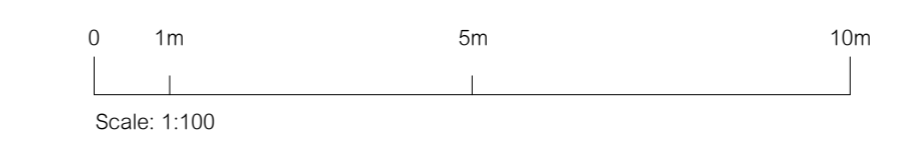
Issued for **PLANNING**

revision: **C** 2021 November
Fire escape route updated

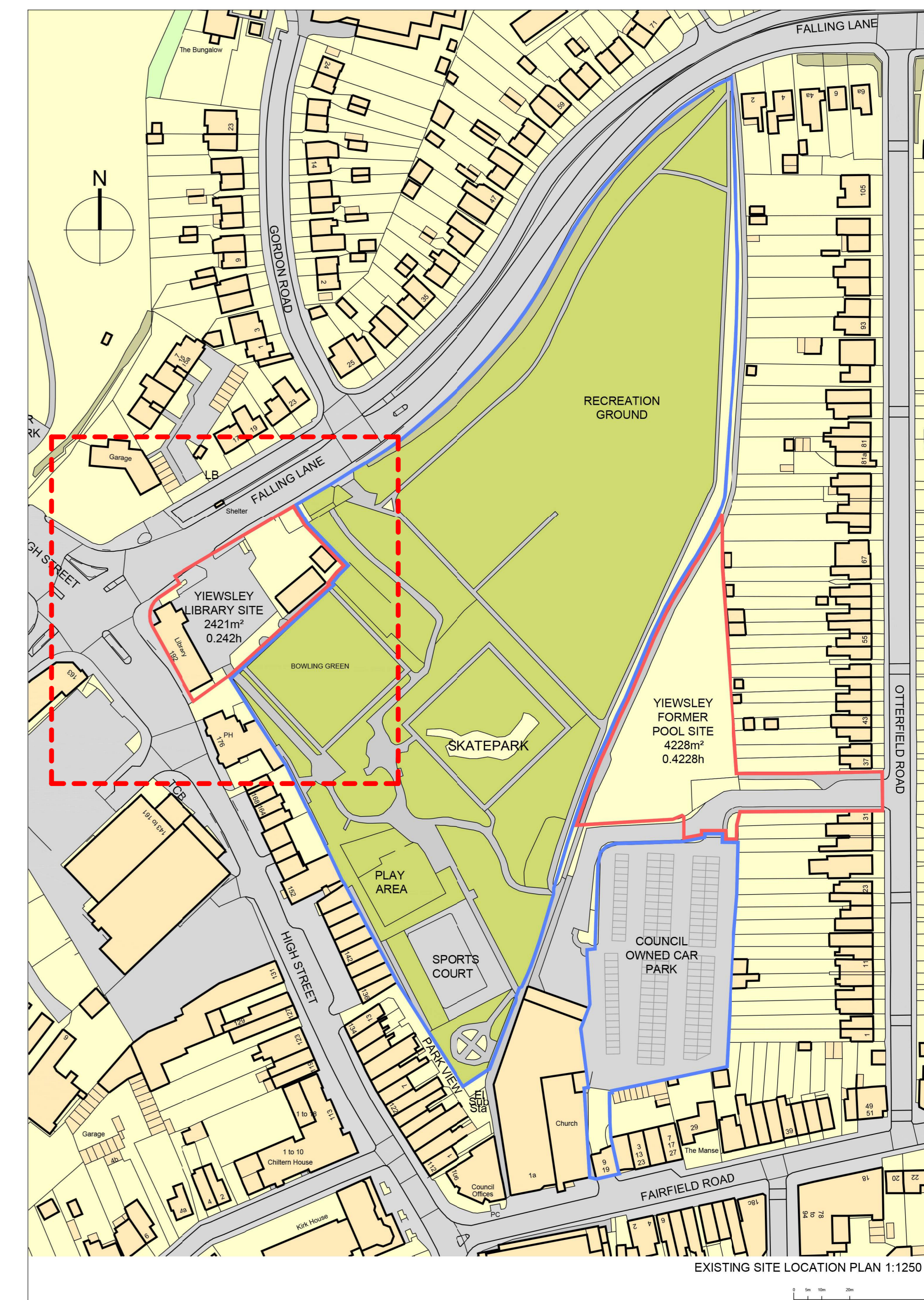
Yiewsley Housing and Library Sites
Space One, Hammersmith, London, W6 0EA

hunters project number: M9534 client project number: - drawn by: GH checked by: JW scale: 1:100 @ A0

All drawings are to be printed in colour. Use figured dimensions only. All levels and dimensions to be checked on site. This drawing is to be read in conjunction with all other relevant drawings and specifications. Hunters is a trading name of Hunter & Partners Limited. © Hunter & Partners Limited. All rights reserved.



Revision	Date	By	Reason
C	2021 November	GH	Fire escape route updated
B	2021 October	GH	Issues for planning. Site location plan updated.
A	2021 September	GH	Issued for planning.
Revision History			



Net Sales Area				Net Sales Area			
Level	Number	Unit Type	Area	Level	Number	Unit Type	Area
00 Ground Floor FFL	08	1Bed	56.2 m ²	03-Third Floor Plan	41	1Bed	50.7 m ²
1Bed: 1			56.2 m ²	03-Third Floor Plan	45	1Bed	50.1 m ²
00 Ground Floor FFL	02	2Bed	42.1 m ²	1Bed: 5			253.3 m ²
00 Ground Floor FFL	03	2Bed	42.1 m ²	03-Third Floor Plan	42	2Bed	61.2 m ²
00 Ground Floor FFL	04	2Bed	10.1 m ²	03-Third Floor Plan	43	2Bed	59.4 m ²
00 Ground Floor FFL	05	2Bed	10.1 m ²	03-Third Floor Plan	44	2Bed	62.5 m ²
00 Ground Floor FFL	06	2Bed	10.1 m ²	2Bed: 3			183.1 m ²
00 Ground Floor FFL	07	2Bed	10.1 m ²	03-Third Floor Plan	40	2Bed	72.6 m ²
2Bed: 6			124.7 m ²	03-Third Floor Plan		Wheelchair	72.6 m ²
00 Ground Floor FFL	09	3Bed	94.4 m ²	2Bed Wheelchair: 1			72.6 m ²
00 Ground Floor FFL	01	3Bed	34.8 m ²	03-Third Floor Plan	38	3Bed	91.5 m ²
3Bed: 2			129.2 m ²	03-Third Floor Plan	36	3Bed	87.4 m ²
00 Ground Floor FFL	9		310.1 m ²	03-Third Floor Plan	34	3Bed	84.5 m ²
01 First Floor FFL	14	1Bed	51.5 m ²	3Bed: 3			263.5 m ²
01 First Floor FFL	18	1Bed	51.5 m ²	03-Third Floor Plan	12		772.5 m ²
01 First Floor FFL	16	1Bed	51.5 m ²	04-Fourth Floor FFL	46	1Bed	56.6 m ²
01 First Floor FFL	10	1Bed	55.9 m ²	04-Fourth Floor FFL	47	1Bed	48.8 m ²
1Bed: 4			210 m ²	04-Fourth Floor FFL	50	1Bed	55.5 m ²
01 First Floor FFL	15	2Bed	70.5 m ²	1Bed: 3			161 m ²
01 First Floor FFL	11	2Bed	68.6 m ²	04-Fourth Floor FFL	48	2Bed	84.3 m ²
01 First Floor FFL	02	2Bed	56.5 m ²	04-Fourth Floor FFL	49	2Bed	62.8 m ²
01 First Floor FFL	03	2Bed	56.5 m ²	2Bed: 2			127.1 m ²
01 First Floor FFL	04	2Bed	71.9 m ²	04-Fourth Floor FFL	5		288 m ²
01 First Floor FFL	05	2Bed	71.9 m ²	Grand total: 57			3430.1 m ²
01 First Floor FFL	06	2Bed	71.9 m ²	Private Amenity Space			
01 First Floor FFL	07	2Bed	69.6 m ²	Level	Name	Area	
2Bed: 9			696.7 m ²	00 Ground Floor FFL	1Bed	11.6 m ²	
01 First Floor FFL	13	2Bed	76.5 m ²	00 Ground Floor FFL	2Bed	56.3 m ²	
2Bed Wheelchair: 1			78.5 m ²	00 Ground Floor FFL	3Bed	86.3 m ²	
01 First Floor FFL	01	3Bed	86.9 m ²			154.2 m ²	
3Bed: 1			86.9 m ²	01 First Floor FFL	1Bed	23.3 m ²	
01 First Floor FFL	12	3Bed	96.9 m ²	01 First Floor FFL	2Bed	55.2 m ²	
3Bed Wheelchair: 1			96.9 m ²	01 First Floor FFL	2Bed	5.5 m ²	
01 First Floor FFL	16	3Bed	107.9 m ²	01 First Floor FFL	3Bed	5.7 m ²	
02 Second Floor FFL	19	1Bed	55.9 m ²	01 First Floor FFL	3Bed	6.5 m ²	
02 Second Floor FFL	20	1Bed	55.5 m ²	2Bed: 9			96.1 m ²
02 Second Floor FFL	29	1Bed	51.6 m ²	02 Second Floor FFL			
02 Second Floor FFL	31	1Bed	51.4 m ²	02 Second Floor FFL	1Bed	29.3 m ²	
02 Second Floor FFL	33	1Bed	51.1 m ²	02 Second Floor FFL	2Bed	55.4 m ²	
1Bed: 5			265.5 m ²	02 Second Floor FFL	2Bed	5.5 m ²	
02 Second Floor FFL	22	2Bed	67.9 m ²	02 Second Floor FFL	Wheelchair	5.5 m ²	
02 Second Floor FFL	23	2Bed	64.6 m ²	01 First Floor FFL	3Bed	5.7 m ²	
02 Second Floor FFL	24	2Bed	64.6 m ²	01 First Floor FFL	3Bed	6.5 m ²	
02 Second Floor FFL	26	2Bed	64.6 m ²	02 Second Floor FFL	3Bed	6.5 m ²	
02 Second Floor FFL	28	2Bed	62.3 m ²	02 Second Floor FFL	Wheelchair	6.5 m ²	
02 Second Floor FFL	30	2Bed	70.5 m ²	02 Second Floor FFL	3Bed	64.1 m ²	
02 Second Floor FFL	32	2Bed	69.5 m ²	02 Second Floor FFL	3Bed	6.5 m ²	
2Bed: 7			483.9 m ²	02 Second Floor FFL	Wheelchair	160.7 m ²	
02 Second Floor FFL	27	2Bed	76.5 m ²	03-Third Floor Plan			
2Bed Wheelchair: 1			76.5 m ²	03-Third Floor Plan	1Bed	112.9 m ²	
02 Second Floor FFL	21	3Bed	75.6 m ²	03-Third Floor Plan	2Bed	27.5 m ²	
3Bed: 1			75.6 m ²	03-Third Floor Plan	2Bed	8.7 m ²	
02 Second Floor FFL	25	3Bed	96.9 m ²	03-Third Floor Plan	Wheelchair		
3Bed Wheelchair: 1			96.9 m ²	03-Third Floor Plan	3Bed	63.2 m ²	
02 Second Floor FFL	15	3Bed	980.5 m ²	03-Third Floor Plan		212.3 m ²	
03-Third Floor Plan	35	1Bed	51.2 m ²	04-Fourth Floor FFL			
03-Third Floor Plan	37	1Bed	50.7 m ²	04-Fourth Floor FFL	1Bed	53.1 m ²	
03-Third Floor Plan	39	1Bed	50.7 m ²	04-Fourth Floor FFL	2Bed	39.9 m ²	
Grand total: 57				04-Fourth Floor FFL		92.9 m ²	
				Grand total		716.2 m ²	

COLOUR KEY

- 1 Bedroom Flat
- 2 Bedroom Flat
- 3 Bedroom Flat
- Circulation
- Lift&Stairs
- Services
- Terrace

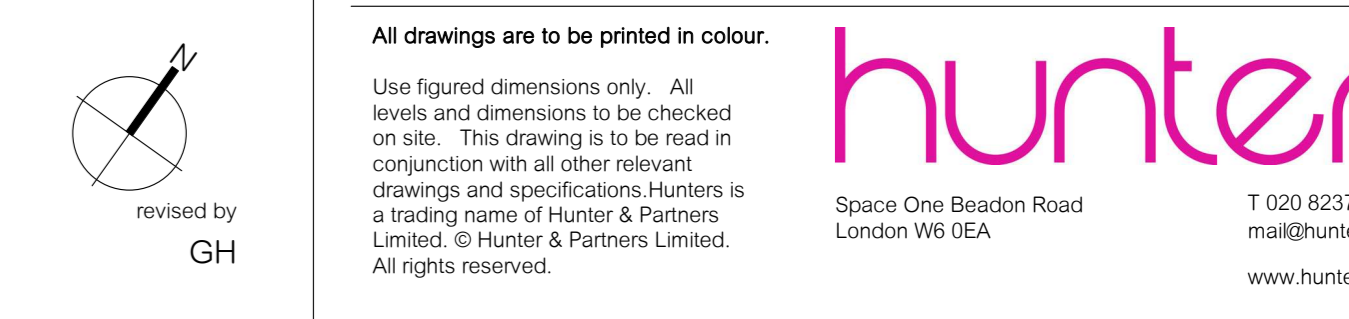
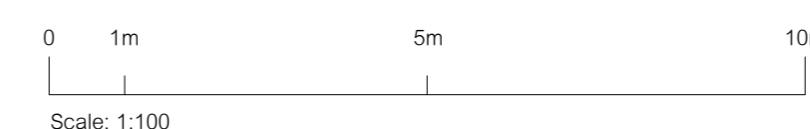
Shared Amenity Space		TOTAL GIA		Unit Mix	
Level	Area	Level	Area	Unit Type	Count
00 Ground Floor FFL	170 m ²	00 Ground Floor FFL	656 m ²	1Bed	18
03-Third Floor Plan	40.6 m ²	01 First Floor FFL	1372.8 m ²	2Bed	27
04-Fourth Floor FFL	417.2 m ²	02 Second Floor FFL	1256.3 m ²	2Bed Wheelchair	3
Grand total	627.7 m ²	03-Third Floor Plan	991.4 m ²	3Bed	7
		04 Fourth Floor FFL	380.6 m ²	3Bed Wheelchair	2
		Grand total	4657 m ²		

01 03-Third Floor Plan
1 : 100

Yiewsley Housing and Library Sites
Space One, Hammersmith, London, W6 0EA

drawing title: **M9534- APL109**
 YIEWSLEY LIBRARY SITE
 PROPOSED THIRD FLOOR

Issued for **PLANNING**
 revision: 01
 date: 2021 November
 Fire escape route updated



Revision	Date	By	Reason
C	2021 November	GH	Fire escape route updated
B	2021 October	GH	Issued for planning. Site location plan updated.
A	2021 September	GH	Issued for planning.



01 04-Fourth Floor FFL
1: 100

COLOUR KEY

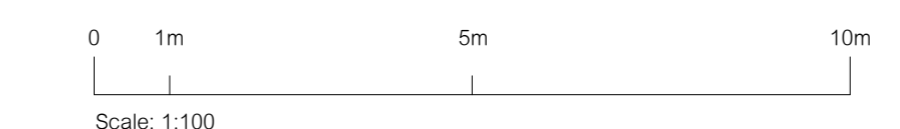
- 1 Bedroom Flat
- 2 Bedroom Flat
- Circulation
- Lift&Stairs
- Services
- Terrace

Shared Amenity Space		TOTAL GIA		Unit Mix	
Level	Area	Level	Area	Unit Type	Count
00 Ground Floor FFL	170 m ²	00 Ground Floor FFL	656 m ²	1Bed	18
03-Third Floor Plan	40.6 m ²	01 First Floor FFL	1372.8 m ²	2Bed	27
04-Fourth Floor FFL	417.2 m ²	02 Second Floor FFL	1256.3 m ²	2Bed Wheelchair	3
Grand total	627.7 m ²	03-Third Floor Plan	991.4 m ²	3Bed	7
		04 Fourth Floor FFL	380.6 m ²	3Bed Wheelchair	2
		Grand total	4657 m ²		
				Grand total: 57	

Net Sales Area			
Level	Number	Unit Type	Area
00 Ground Floor FFL	08	1Bed	56.2 m ²
1Bed: 1			56.2 m ²
00 Ground Floor FFL	02	2Bed	42.1 m ²
00 Ground Floor FFL	03	2Bed	42.1 m ²
00 Ground Floor FFL	04	2Bed	10.1 m ²
00 Ground Floor FFL	05	2Bed	10.1 m ²
00 Ground Floor FFL	06	2Bed	10.1 m ²
00 Ground Floor FFL	07	2Bed	10.1 m ²
2Bed: 5			124.7 m ²
00 Ground Floor FFL	09	3Bed	94.4 m ²
00 Ground Floor FFL	01	3Bed	34.8 m ²
3Bed: 2			129.2 m ²
00 Ground Floor FFL	9		310.1 m ²
01 First Floor FFL	14	1Bed	51.5 m ²
01 First Floor FFL	18	1Bed	51.1 m ²
01 First Floor FFL	16	1Bed	51.5 m ²
01 First Floor FFL	10	1Bed	55.9 m ²
1Bed: 4			210 m ²
01 First Floor FFL	15	2Bed	70.5 m ²
01 First Floor FFL	17	2Bed	69.5 m ²
01 First Floor FFL	11	2Bed	68.6 m ²
01 First Floor FFL	02	2Bed	56.5 m ²
01 First Floor FFL	03	2Bed	56.5 m ²
01 First Floor FFL	04	2Bed	71.9 m ²
01 First Floor FFL	05	2Bed	71.9 m ²
01 First Floor FFL	06	2Bed	71.9 m ²
01 First Floor FFL	07	2Bed	69.6 m ²
2Bed: 9			606.7 m ²
01 First Floor FFL	13	2Bed Wheelchair	78.5 m ²
2Bed Wheelchair: 1			78.5 m ²
01 First Floor FFL	01	3Bed	86.9 m ²
3Bed: 1			86.9 m ²
01 First Floor FFL	12	3Bed Wheelchair	96.9 m ²
3Bed Wheelchair: 1			96.9 m ²
01 First Floor FFL	16	3Bed	107.9 m ²
02 Second Floor FFL	19	1Bed	55.9 m ²
02 Second Floor FFL	20	1Bed	55.5 m ²
02 Second Floor FFL	29	1Bed	51.6 m ²
02 Second Floor FFL	31	1Bed	51.4 m ²
02 Second Floor FFL	33	1Bed	51.1 m ²
1Bed: 5			265.5 m ²
02 Second Floor FFL	22	2Bed	67.9 m ²
02 Second Floor FFL	23	2Bed	64.6 m ²
02 Second Floor FFL	24	2Bed	64.6 m ²
02 Second Floor FFL	26	2Bed	64.6 m ²
02 Second Floor FFL	28	2Bed	62.3 m ²
02 Second Floor FFL	30	2Bed	70.5 m ²
02 Second Floor FFL	32	2Bed	69.5 m ²
2Bed: 7			443.9 m ²
02 Second Floor FFL	27	2Bed Wheelchair	78.5 m ²
2Bed Wheelchair: 1			78.5 m ²
02 Second Floor FFL	21	3Bed	75.6 m ²
3Bed: 1			75.6 m ²
02 Second Floor FFL	25	3Bed Wheelchair	96.9 m ²
3Bed Wheelchair: 1			96.9 m ²
02 Second Floor FFL	15	3Bed	880.5 m ²
03-Third Floor Plan	35	1Bed	51.2 m ²
03-Third Floor Plan	37	1Bed	50.7 m ²
03-Third Floor Plan	39	1Bed	50.7 m ²

Net Sales Area			
Level	Number	Unit Type	Area
03-Third Floor Plan	41	1Bed	50.7 m ²
03-Third Floor Plan	45	1Bed	50.1 m ²
1Bed: 5			253.3 m ²
03-Third Floor Plan	42	2Bed	61.2 m ²
03-Third Floor Plan	43	2Bed	59.4 m ²
03-Third Floor Plan	44	2Bed	62.5 m ²
2Bed: 3			183.1 m ²
03-Third Floor Plan	40	2Bed Wheelchair	72.6 m ²
2Bed Wheelchair: 1			72.6 m ²
03-Third Floor Plan	38	3Bed	91.5 m ²
03-Third Floor Plan	36	3Bed	87.4 m ²
03-Third Floor Plan	34	3Bed	84.5 m ²
3Bed: 3			263.5 m ²
03-Third Floor Plan	12		772.5 m ²
04-Fourth Floor FFL	46	1Bed	56.6 m ²
04-Fourth Floor FFL	47	1Bed	48.8 m ²
04-Fourth Floor FFL	50	1Bed	55.5 m ²
1Bed: 3			161 m ²
04-Fourth Floor FFL	48	2Bed	64.3 m ²
04-Fourth Floor FFL	49	2Bed	62.9 m ²
2Bed: 2			127.1 m ²
04-Fourth Floor FFL	5		289 m ²
Grand total: 57			3430.1 m ²

Private Amenity Space		
Level	Name	Area
00 Ground Floor FFL		
00 Ground Floor FFL	1Bed	11.6 m ²
00 Ground Floor FFL	2Bed	56.3 m ²
00 Ground Floor FFL	3Bed	86.3 m ²
		154.2 m ²
01 First Floor FFL		
01 First Floor FFL	1Bed	23.3 m ²
01 First Floor FFL	2Bed	55.2 m ²
01 First Floor FFL	2Bed	5.5 m ²
01 First Floor FFL	Wheelchair	5.7 m ²
01 First Floor FFL	3Bed	6.5 m ²
01 First Floor FFL	Wheelchair	96.1 m ²
02 Second Floor FFL		
02 Second Floor FFL	1Bed	29.3 m ²
02 Second Floor FFL	2Bed	55.4 m ²
02 Second Floor FFL	2Bed	5.5 m ²
02 Second Floor FFL	Wheelchair	5.5 m ²
02 Second Floor FFL	3Bed	64.1 m ²
02 Second Floor FFL	3Bed	6.5 m ²
02 Second Floor FFL	Wheelchair	160.7 m ²
03-Third Floor Plan		
03-Third Floor Plan	1Bed	112.9 m ²
03-Third Floor Plan	2Bed	27.5 m ²
03-Third Floor Plan	2Bed	8.7 m ²
03-Third Floor Plan	3Bed	63.2 m ²
03-Third Floor Plan	3Bed	212.3 m ²
04-Fourth Floor FFL		
04-Fourth Floor FFL	1Bed	53.1 m ²
04-Fourth Floor FFL	2Bed	39.9 m ²
		92.9 m ²
Grand total		716.2 m ²



drawing title:
M9534- APL110

**YIEWSLEY LIBRARY SITE
PROPOSED FOURTH FLOOR**

Issued for **PLANNING**
revision date
C 2021 November
Fire escape route updated



Yiewsley Housing and Library Sites
Space One, Hammersmith,
London, W6 0EA

hunters project number: M9534 client project number: - drawn by: GH checked by: JW scale: 1: 100 @ A0



model ref.: C:\Revit Local\M9534-Falling Lane_Central File-01_g_hunters.rvt

Revision	Date	By	Reason
C	2021 November	GH	Fire escape route updated
B	2021 October	GH	Issued for planning. Site location plan updated.
A	2021 September	GH	Issued for planning.

QODA Consulting

Oxfordshire
t: 01367 245960

London
t: 0207 394 2125

Bristol
t: 0117 450 9511

w: www.qodaconsulting.com
e: enquiries@qodaconsulting.com