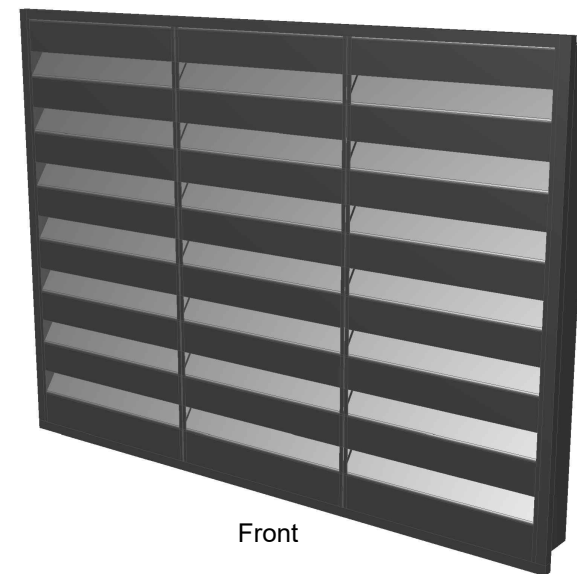


Profile

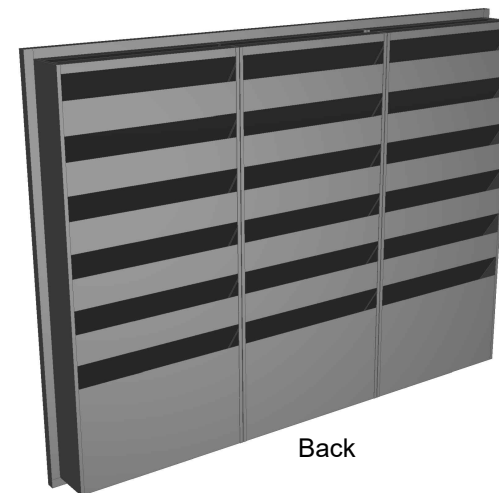
Front Elevation

- Notes
- A All Dimensions are in Millimetres (Manufacturing Tolerance +0/-4mm)
 - B Louvre Blade Pitch May Vary Slightly to Suit Louvre Height
 - C Manufactured from British Steel to Colour Detailed Below


- KEY
- 1 0.9mm Folded Galvanised Steel Sheet Frame
 - 2 0.9mm Folded Galvanised Steel Blade Section
 - 3 Birdmesh/Insect Mesh Guard Where Required
 - 4 0.9mm Blanking to Rear of Dummy Bottom Blade
 - 5 0.9mm Galvanised Perforated Steel Sheet Retaining Controlled Density Mineral Wool Infill
 - 6 30x30x1.6mm Flashing Trims to all Four Sides of the Louvre with Mitred Corners. Flashings Supplied Loose.
 - 7 Louvre to Fix Through Back into Steel Post/Frame
 - 8 Client to Fix Through Rear of Frame to Back of Louvre Frame



Front



Back

Rev	Amendment	Date	Project:	Scale:	Date:	 soundplanning	Sound Planning Limited Farnham Surrey Phone: 01252 711972 Fax: 01252 601083 Email: enquiries@soundplanning.co.uk
			Acoustic Louvre	NTS @A4	30/03/2024		
Notes No scaling permitted from this drawing. All dimensions shown to be verified prior to construction / manufacture.			Title: Acoustic Louvre 300mm	Drawn: B.Walker			
				Drawing No: AL 3000mm			