

Elevation 1: South-East facing to Pield Heath Road (1:200)



Elevation 2: South-West facing to Pield Heath Avenue (1:200)



Elevation 3: North-West facing to Nr4 Pield Heath Avenue (1:200)



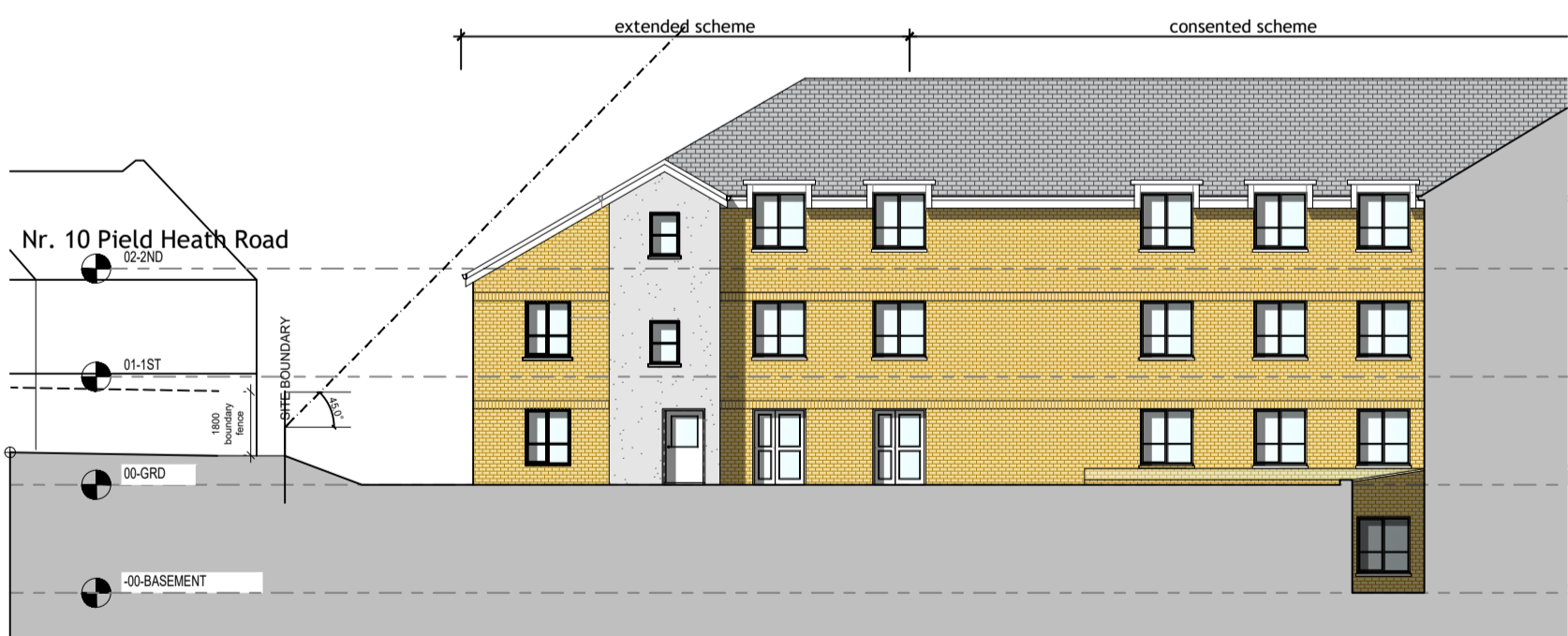
Part Section A-A: North-East facing elevation (1:200)



Elevation 4: North-east facing garden elevation (1:200)



Front Elevation Entranceway large scale (1:50)



Courtyard Elevation 6



Courtyard Elevation 7

Notes		
1. All dimensions to be checked onsite prior to any manufacture and production of shop drawings by others.		
2. All discrepancies to be reported to Simply Develop(UK) Ltd before works undertaken		
3. Do not scale directly from this drawing for purposes of construction		
4. Drawing to be read in conjunction with relevant consultants and specialist drawings		
5. Drawing in metric		
6. Application boundary based on assumed site boundaries as identified in Topographical survey and should not be regarded as a Title Plan. Refer to separate legal title plan for this information.		
7. No reliance on this drawing should be taken for any setting out site purposes and strictly for Planning and information purposes. Refer to separate consultants drawings for site setting out.		
Copyright of this drawing is retained by Simply Develop (UK) Ltd and issued on the condition it is not reproduced or copied or disclosed to any unauthorised persons either wholly or in part without written consent of Simply Develop (UK) Ltd.		
DATE	REVISION	INITIALS
#	#	#

Status	PLANNING	
Project	PROPOSED 81 BEDROOM CARE HOME 18 PIELD HEATH ROAD, UXBRIDGE	
Description	ELEVATIONS & SITE SECTIONS	
Project Nr.	Drawing Nr.	Revision
SDU-104	400	M
Date 25.06.2024	Drawn	Scale 1:200@A1
Simply Develop Stewart House, Pochard Way, Bellshill, ML4 3HB Tel: 0141 333 1495 Web: www.simplyuk.co		