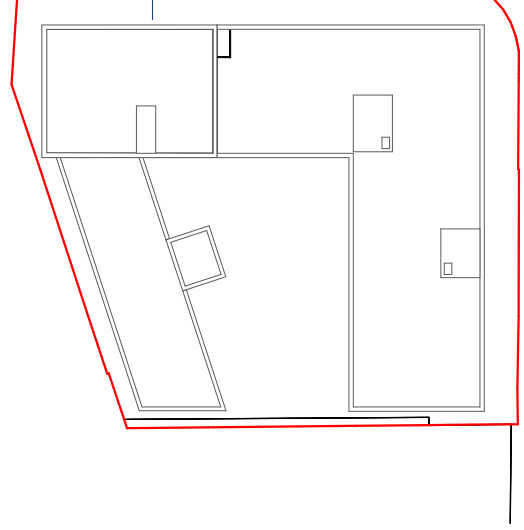


KEY

01. Brick Type 01 - light grey multi mix stretcher bond with light mortar colour,final brickwork type / colour TBC
02. Brick Type 02 - light grey multi mix stretcher bond with dark mortar colour, final brickwork type / colour TBC
03. Brick Type 03 - grey/black dark multi mix stretcher bond brickwork with light mortar colour-final brickwork type / colour TBC
04. Solider course brickwork detail
05. Hit and miss brick work wall detail
06. Projected header brickwork detail pattern
07. Brick window sill detail
08. Projecting horizontal concrete/GRC spandrel and window sill profile. (Colour TBC)
- 09.GRC window head panel.(Colour TBC)
- 10a.Powder coated metal balustrade. Vertical MS flat bars RAL 7021.
- 10b.Powder coated metal balustrade. Vertical MS flat bars RAL 7032.
- 11.2no.PPC aluminium railings with solid panels to top of balcony wall to allow for planter box space (RAL.Colour 7021)
- 12a. Aluminium window system,colour to match railings (RAL.7021) Windows set in 215mm brick reveal
- 12b. Aluminium window system,colour to match railings (RAL.7032) Windows set in 215mm brick reveal
- 13.Aluminium door system colour to match windows. Doors set in 215mm brick reveal
- 14.Concrete/GRC coping to roof parapet
- 15.Obscured glazing to bike store.
- 16.PPC Aluminium Ventilated louvered doors to refuse /service stores.
- 17.Signage letter system powder coated (colour tbc)



P02	16/04/2024	100p unit amended at 8th floor to allow fire escape access to roof terrace (core 2 escape route, internal structural walls to apartments in Core A updated, evacuation lift added to external staircase A)
P01	30/06/2021	Planning

rev date	description
----------	-------------

stock
wool

The Pump House 19 Hooper Street
London E1 8BU 020 7264 8600
info@stockwool.co.uk

Client
Millington Road (HPH4) LLP

Project
HPH4 Millington Road, Hayes

Drawing
Block A - North Elevation
Bay Study

Status
PLANNING

Scale 1:50@A1
CAD File 3552_MillingtonMainModel PA Housing_02.pln
Date
Drawn
Checked

Project no_Drawing no Revision
3552_PL(40)103 P02

0 1000 2000mm