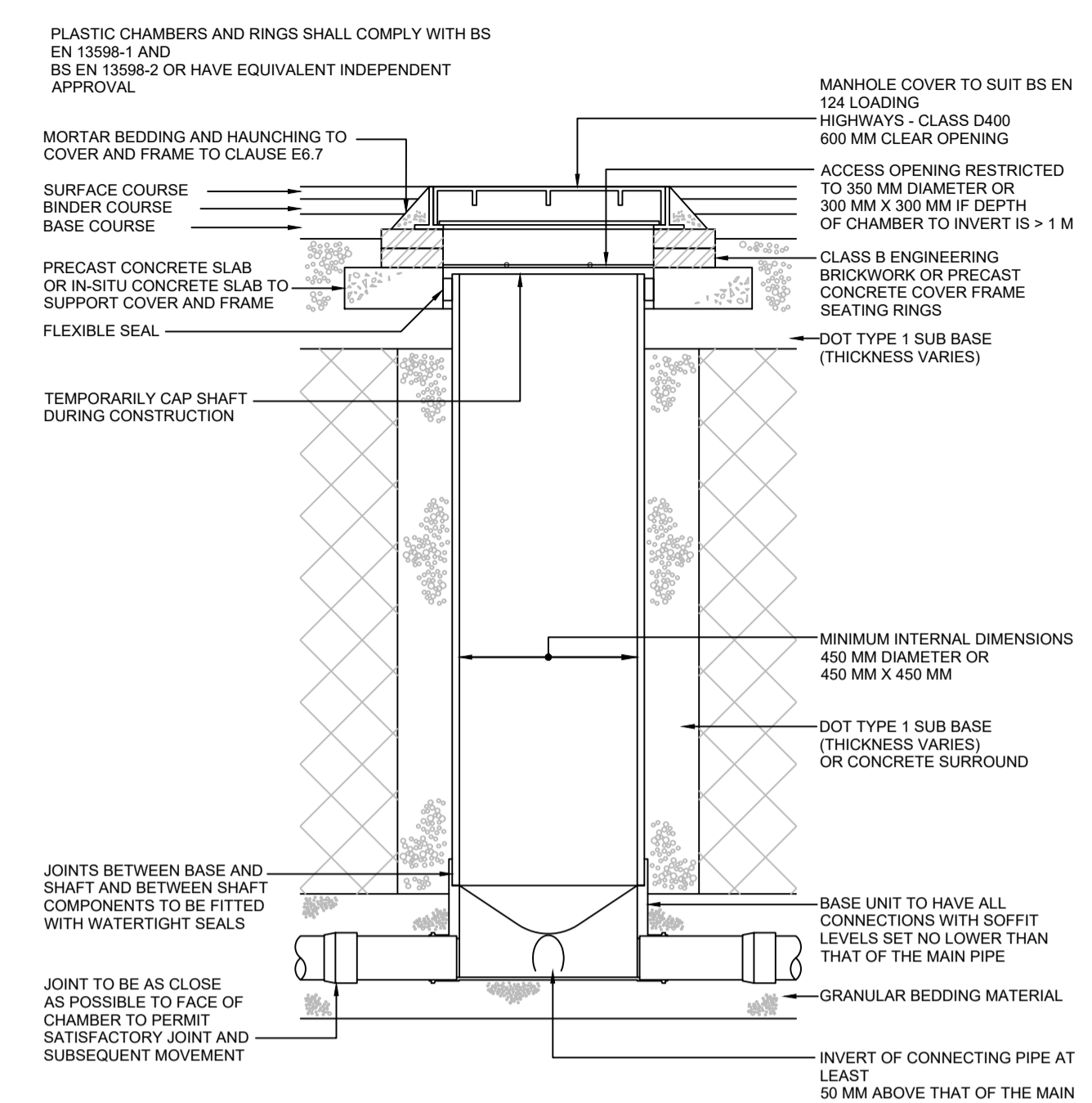
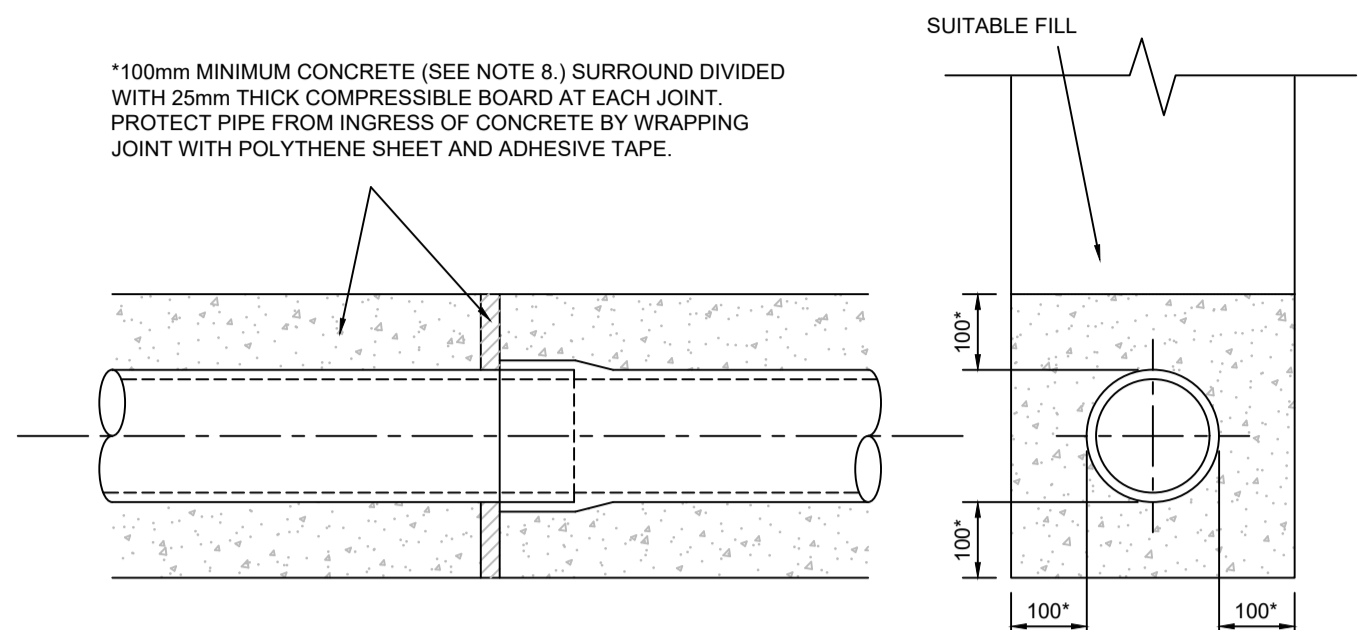


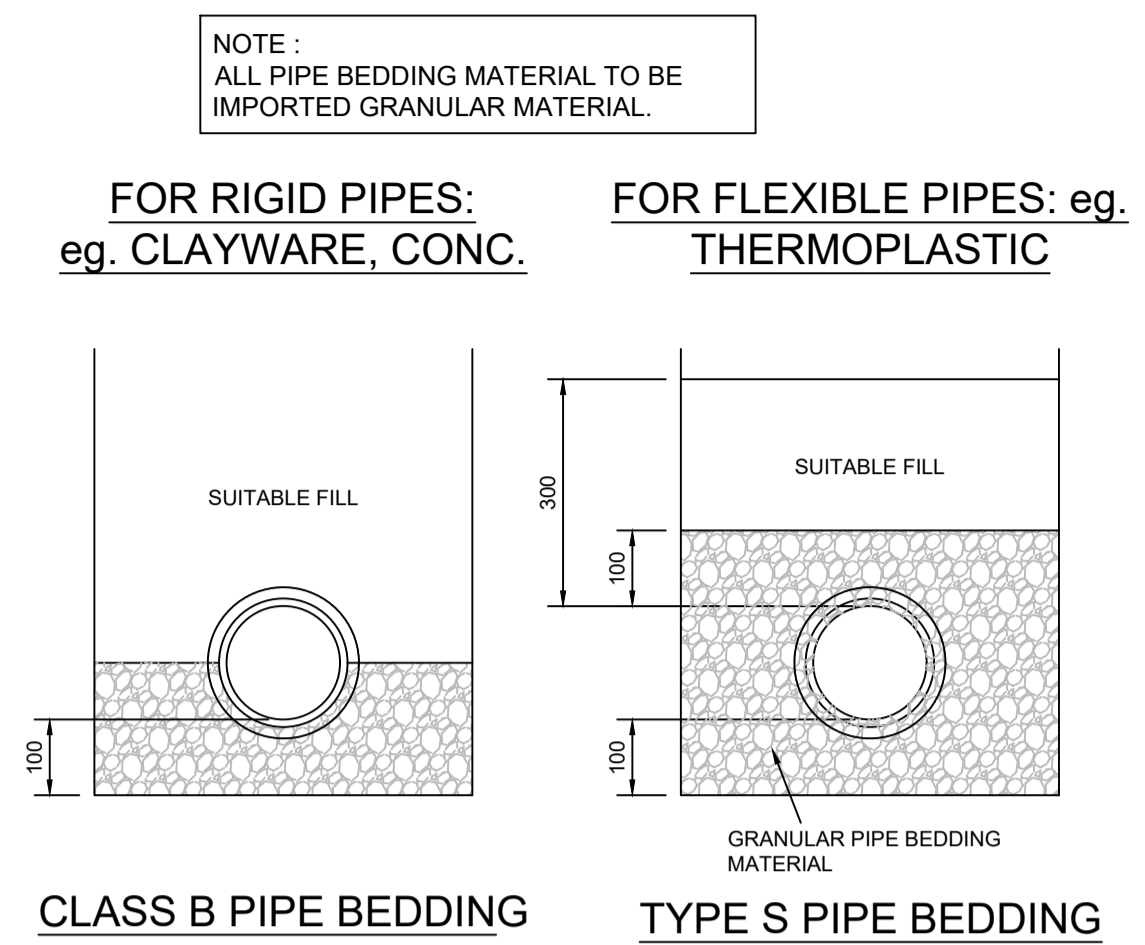
NOTES
 CONTRACTORS MUST VERIFY ALL DIMENSIONS ON SITE BEFORE COMMENCING ANY WORK ON SHOP DRAWINGS
 DO NOT SCALE FROM THIS DRAWING
 RCD CONSULTANTS LTD COPYRIGHT



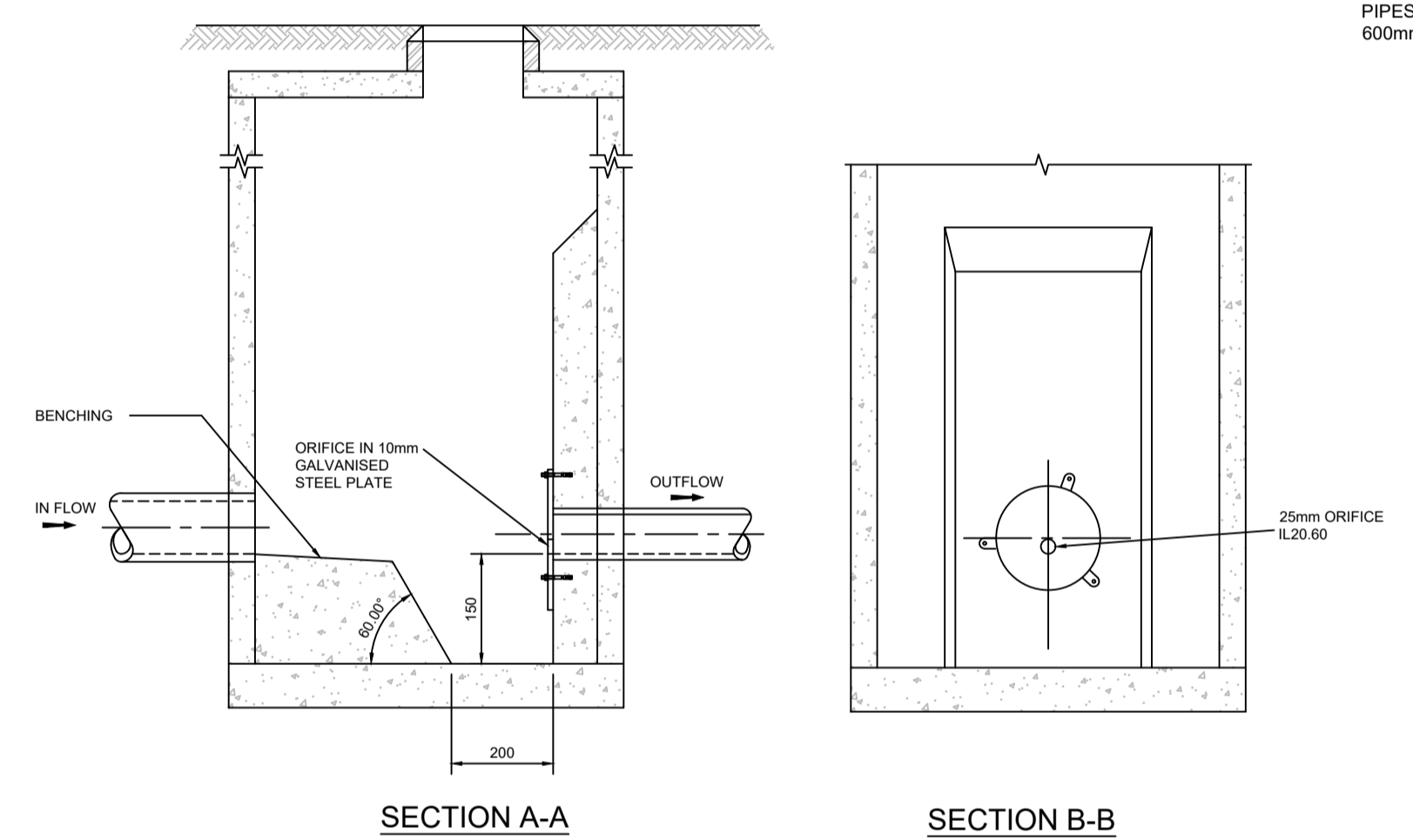
TYPICAL INSPECTION CHAMBER DETAIL - TYPE 3 (FLEXIBLE MATERIAL DETAIL)
 MAXIMUM DEPTH FROM COVER LEVEL TO SOFFIT OF PIPE IN AREAS SUBJECT TO VEHICLE LOADING 3 M, NON-ENTRY NTS



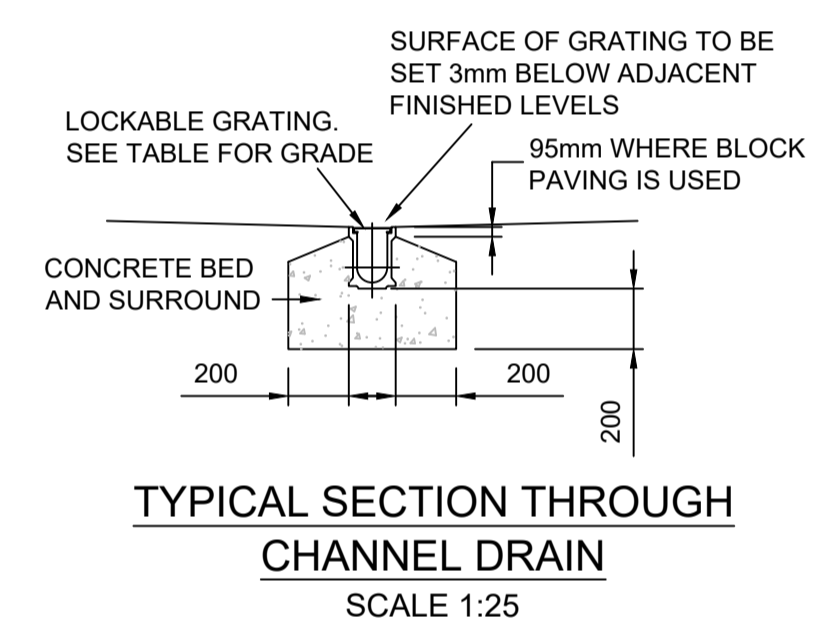
SIDE ELEVATION
CROSS SECTION
TYPE Z BEDDING (CONCRETE ENCASED PIPES)
 FOR PIPES WITH LESS THAN 1.2m COVER
 NOT TO SCALE
 * FOR HEAVY DUTY/INDUSTRIAL APPLICATIONS INCLUDING MAIN ROADS OR ADOPTABLE ROADS INCREASE CONCRETE TO 150mm



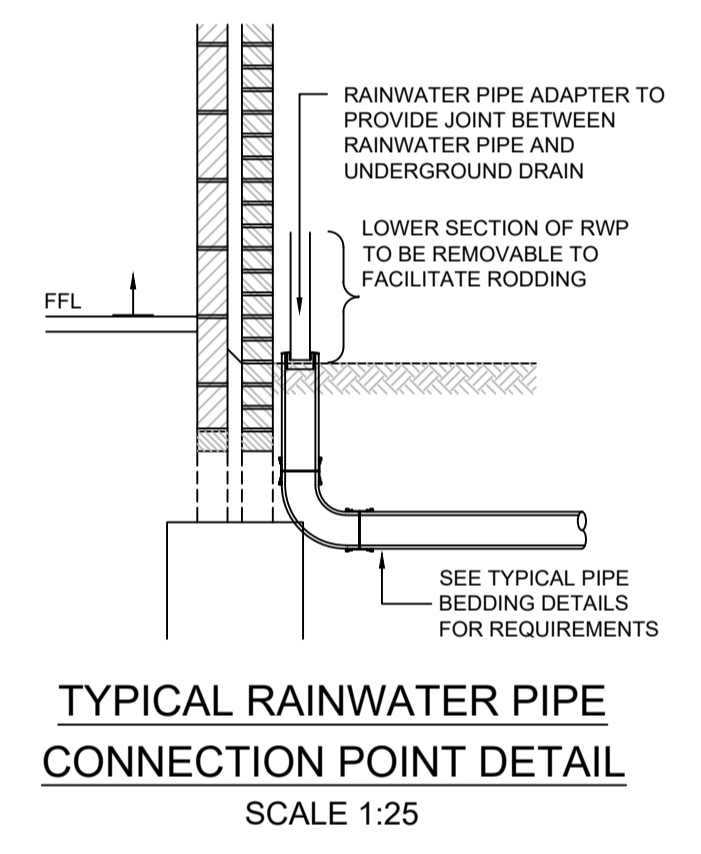
CLASS B PIPE BEDDING **TYPE S PIPE BEDDING**
TYPICAL PIPE BEDDING DETAILS
 SUITABLE FILL - THE SUITABLE FILL SHALL BE SUITABLE FOR THE LOCATION AND SHALL BE CAREFULLY COMPACTED TO PROVIDE A STABLE FILL WITHOUT DAMAGING THE PIPE. FILL UNDER CAR PARKING AREAS, SHARED DRIVES AND PRIVATE ROADS SHALL BE WELL COMPACTED GRADED GRANULAR MATERIAL. FILL UNDER ADOPTABLE ROADS MAY NEED TO BE TYPE 1 GRANULAR SUB-BASE MATERIAL - CHECK WITH HIGHWAY AUTHORITY IF APPROPRIATE.
 GRANULAR MATERIAL - FOR RIGID PIPES THE GRANULAR MATERIAL SHOULD CONFORM TO BS EN 1610 Annex B Table B.15 AND SHOULD BE SINGLE SIZE MATERIAL OR GRADED MATERIAL FROM 5mm UP TO A MAXIMUM SIZE OF 10mm FOR 100mm DIAMETER PIPES, 14mm FOR 150mm DIAMETER PIPES, 20mm FOR PIPES FROM 150mm TO 600mm DIAMETER AND 40mm FOR PIPES MORE THAN 600mm DIAMETER.



ORIFICE PLATE MANHOLE (NTS)



TYPICAL SECTION THROUGH CHANNEL DRAIN (SCALE 1:25)

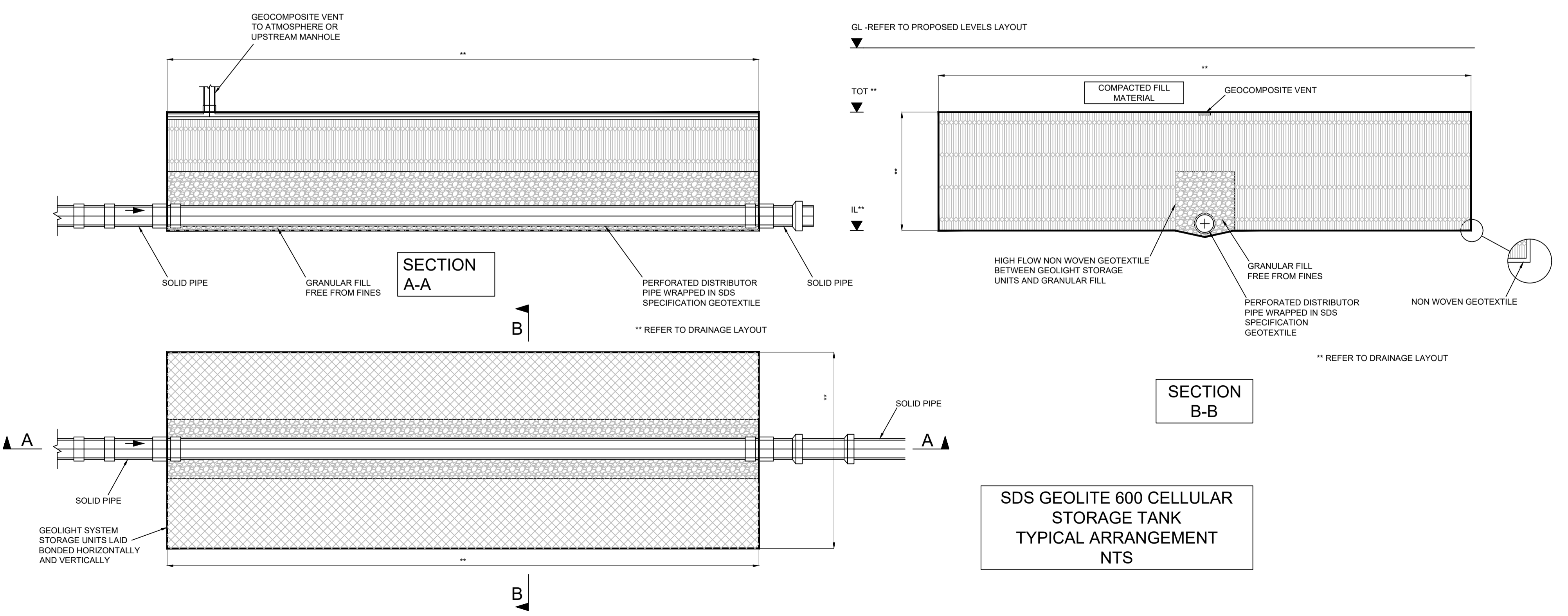


TYPICAL RAINWATER PIPE CONNECTION POINT DETAIL (SCALE 1:25)

- NOTES
- ALL DIMENSIONS IN MILLIMETERS UNLESS STATED OTHERWISE.
 - DRAWING TO BE FOLLOWED IN CONJUNCTION WITH ALL ACCOMPANYING DRAWINGS AND SPECIFICATIONS AS LISTED IN THE CONTRACT DOCUMENTS.
 - ALL BUILDING DRAINAGE TO BE INSTALLED AND TESTED IN COMPLIANCE WITH THE BUILDING REGULATIONS 2000 DRAINAGE AND WASTE DISPOSAL APPROVED DOCUMENT H 2002 EDITION.
 - ALL COMPONENTS AND MATERIALS ARE TO BE MANUFACTURED AND SUPPLIED IN ACCORDANCE WITH THE RELEVANT BRITISH STANDARDS, AND LAID AND BACKFILLED IN ACCORDANCE WITH MANUFACTURERS INSTRUCTIONS AND THE RELEVANT BRITISH STANDARDS.
 - THE CONTRACTOR SHALL, BEFORE COMMENCING THE WORKS, VERIFY ALL SITE AND SETTING OUT DIMENSIONS. THE CONTRACTOR SHALL BE RESPONSIBLE FOR THE TRUE AND PROPER SETTING OUT OF THE WORKS AND FOR THE CORRECTNESS OF THE POSITION, LEVELS, DIMENSIONS, AND ALIGNMENT OF ALL PARTS OF THE WORKS.
 - SMALL LIGHTWEIGHT ACCESS COVERS SHOULD BE SECURED (FOR EXAMPLE WITH SCREWS) TO DETER UNAUTHORISED ACCESS.
 - INSPECTION CHAMBERS AND MANHOLES IN BUILDINGS TO HAVE MECHANICALLY FIXED AIRTIGHT COVERS UNLESS THE DRAIN ITSELF HAS WATERTIGHT ACCESS COVERS.
 - MANHOLES DEEPER THAN 1m TO HAVE GALVANISED STEEL STEP IRONS OR FIXED LADDERS.
 - ALL ABOVE GROUND DRAINAGE TO INCORPORATE RODDING ACCESS FACILITIES.
 - INSITU CONCRETE FOR USE IN GENERAL DRAINAGE WORKS, GRADE TO BS: 5328, USE AS FOLLOWS:

CLASS 1 SULFATE CONDITIONS:	
ADOPTABLE STANDARD WORKS AND AREAS SUBJECT TO HEAVY LOADING	GEN 3 or ST4
AREAS SUBJECT TO LIGHT LOADING eg. HOUSING AND PRIVATE DRIVES, SMALL CAR PARKS	GEN1 or ST2
FOR BURIED CONCRETE EXPOSED TO OTHER SULFATE CONDITIONS:	
CLASS 2	FND 2
CLASS 3	FND 3
CLASS 4A	FND 4A
CLASS 4B	FND 4B

NOTE:
 WALLS FLOORS & FOUNDATIONS SHOWN ON THIS DRAWING ARE INDICATIVE ONLY.
 REFER TO STRUCTURAL ENGINEERS DRAWINGS FOR TYPICAL WALL/FLOOR/FOUNDATIONS SECTIONS.



SDS GEOLITE 600 CELLULAR STORAGE TANK TYPICAL ARRANGEMENT (NTS)

P1	PRELIMINARY ISSUE	18.01.2026	RAC
REV	AMENDMENT	DATE	CHKD
DRAWING STATUS: PRELIMINARY			
RCD			
RCD CONSULTANTS LTD EMAIL: ray@rcd-consultants.com			
CLIENT			
PROJECT PROPOSED CARWASH WIDEWATER PLACE MOORHALL ROAD, UXBRIDGE			
DRAWING TITLE DRAINAGE CONSTRUCTION DETAILS			
CIVILS			
SCALE 1:25 @ A1 1:50 @ A3	DRAWN BY STC	CHECKED RAC	DATE JAN 2026
DRAWING NUMBER 1111-2605-CIV-50			REVISION P1