

The contractor is responsible for checking dimensions, tolerances and references. Any discrepancy to be verified with the Architect before proceeding with the works. Where an item is covered by drawings to different scales the larger scale drawing is to be worked to.

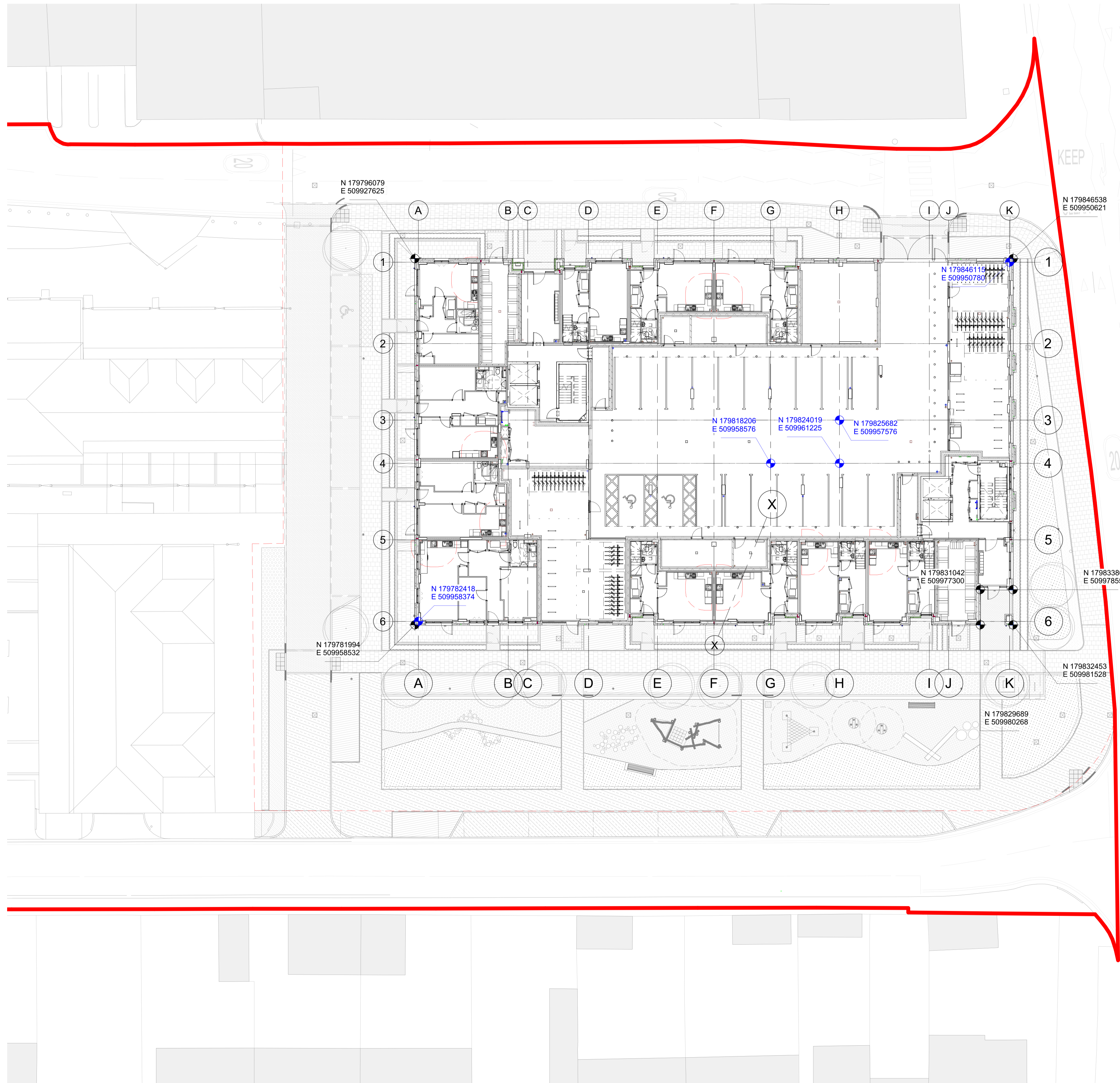
Do not scale drawing. Figured dimensions to be worked to in all cases.

Where products have been specified, PRP have reviewed applicable products available in the UK at the time of writing the specification. For the avoidance of doubt, product manufacturers and suppliers must confirm that each product is fit for its intended use and provide such evidence as may reasonably be requested to confirm performance, including, but not limited to, product test classification and interfaces with adjacent products.

Where the contractor wishes to propose alternative products, representative samples and a full technical appraisal should be submitted by the contractor to the employer demonstrating that their proposed alternative has equal or better performance.

CDM REGULATIONS 2015. All current drawings and specifications for the project must be read in conjunction with the Designer's Hazard and Environment Assessment Record

All intellectual property rights reserved.



KEY DRAWING REFERENCES

Title of Drawing Series	Drawing Series No's
Site Plan	30000
Building Co-Ordinates	31000
GA Plans	40000
Structural Layout	40600
GA Elevations & Sections	41000
GA Height Rods	42000
GA Cores	43000
Dwelling Plans	44000
Bay Studies	47000
Materials Palettes	48000
Refuse Strategy	50000
Postal Strategy	51000
Fire Strategy	52000
Cycle Strategy	53010
Security Strategy	53020
Rainwater Disposal Strategy	53050
Cleaning and Maintenance	53060
Principal Construction	60000
Lead Details	61000
Sub-structure Details	62000
Fine-structure Details	63000
Envelope Details	64000
Roof Details	65000
Internal Wall Details	66000
Balconies	67000
Metawork	68000
Window & Door Schedule	70000
Internal Doors Schedule	71000
Bathroom Types Schedule	72000
Kitchen Schedule	73000

MATERIAL REFERENCES

Brickwork - Supplier TBC

Brick Type 'a' Red multi-stock with light coloured mortar.

Brick Type 'b' Dark red multi-stock with light coloured mortar.

Brick Type 'c' Light brick with light coloured mortar.

Brick Type 'd' Warm grey multi-stock with light coloured mortar.

Brick Type 'e' Glazed green brick with dark mortar.

FABRIC EFFICIENCY U-VALUES (Baseline Values)

Ground / Exposed Upper Floor: 0.11 W/m²/K

External Walls: 0.15 W/m²/K

Party Walls: 0.00 W/m²/K (all exposed edges sealed and cavity fully filled to prevent heat loss through cavity)

Dwelling / Com Wall: 0.15 W/m²/K (U-Value of walls next to unheated areas)

Roof: 0.11 W/m²/K

Solid Door: 1.2 W/m²/K

Window: 1.2 W/m²/K (G-Value - 0.40 S&W / 0.55 N&E)

Air Permeability: 3.0 m³/h.m² at 50 Pa

- Site Boundary
- - - Phase 1 Boundary
- Grid Intersection Coordinates
- Site Coordinates

Rev	Date	Description	Drawn	Checked
C3	06/02/24	Grid intersection coordinates added	RB	SG
C2	06/02/24	Grid lines added	RB	SG
C1	15/11/23	Site Coordinates added	RB	SG
T2	23/06/23	Suitability code amended to S4	FS	RB
T1	16/03/23	Issued for Tender	FS	RB

Hayes Town Centre PRP project No.HTC
Site Plan Proposed Boundary Phase 1

Project - Originator - Zone - Level - Doc - Discipline - Number
HTC-PRP-P1ZZ-00-GA-A-30020
S4 - CONSTRUCTION Revision:**C3**
 Drawn KR Checked RB Date Oct 2022 Scale @ A1 As indicated

