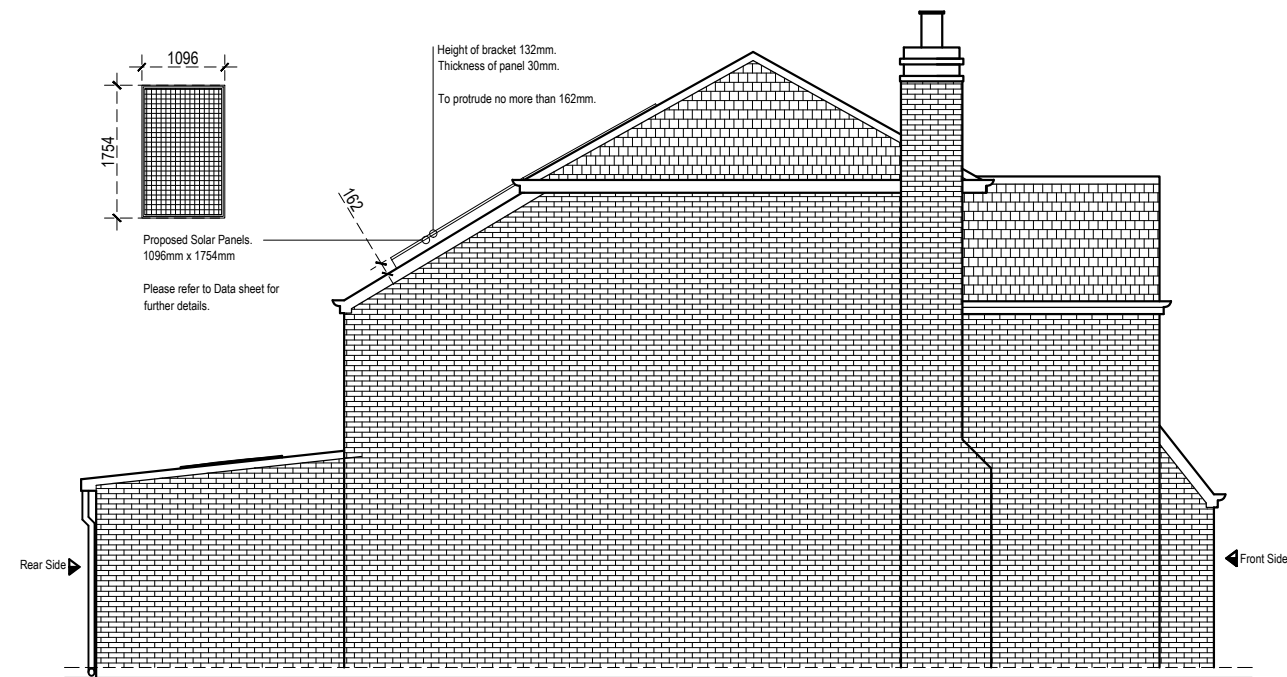
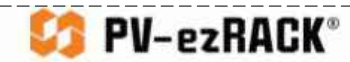


EXISTING SIDE ELEVATION 'D'
1:100 @ A3



PROPOSED SIDE ELEVATION 'D'
1:100 @ A3

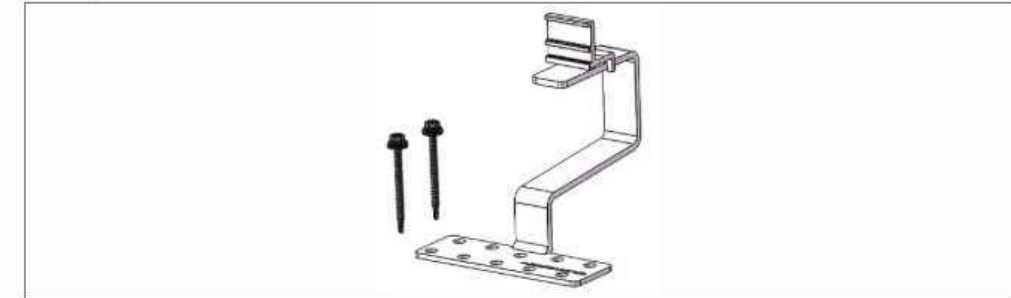


Tile Interface for light to medium

Assembly



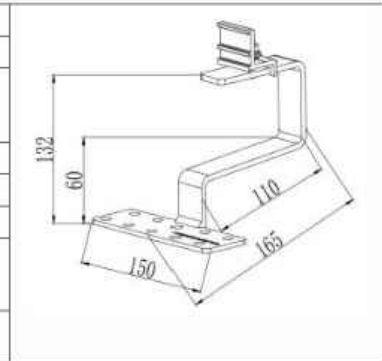
Component



Tile Interface for light to medium with 6.3x70 Buildex Screw
Part No.: ER-I-PRO/01

Technical Specification

| | |
|---------------------|--|
| Application | Tile Roof |
| Purlin Requirement | Metal or Timber Purlin |
| Screw Specification | 2 x C3 Buildex 14 x 11 x 70 (14 gauge, 6.3 mm, 11 TPI, 70 mm long) screw with 16 mm Aluminum Bonded Washer |
| Dimensions | L165*W150*H132mm |
| Weight | 0.706 kg |
| Packaging | 12 units per pack, 2 packs (24 units) per carton |
| Material | Roof Hook: SUS304 Bolts/Washer/Nuts/Spring: SUS304 ezClip: AL6005-T5 |
| Standard | GB50797 AS NZS1170.2 EN1991 JISC8955 ASCE 7-10 |



@ClenergyGlobal @ClenergyClub @ClenergyAUS @Clenergy @ClenergyClub @Clenergy_global

E: sales@clenergy.com | W: www.clenergy.com

A Clenergy Technologies Company | 092022 V1.0

Project:
13 KILPATRICK WAY,
HAYES,
UB4 9SX

Title:
SOLAR PANELS
EXISTING & PROPOSED
SIDE ELEVATION 'D'

| | | |
|---------------------------|----------|-------------|
| Rev | Dec 2022 | Preliminary |
| | Date | Description |
| Scale: 1:100@A3 | | |
| Initial Date: Dec 2022 | | |
| Drawing No: 13KW-0C | | Rev: - |

GENERAL NOTES
1. These documents are for planning purposes only.
2. Contractor must verify all dimensions on site before commencing any work or shop drawings.

0 1m 2m 3m
1:100@A3