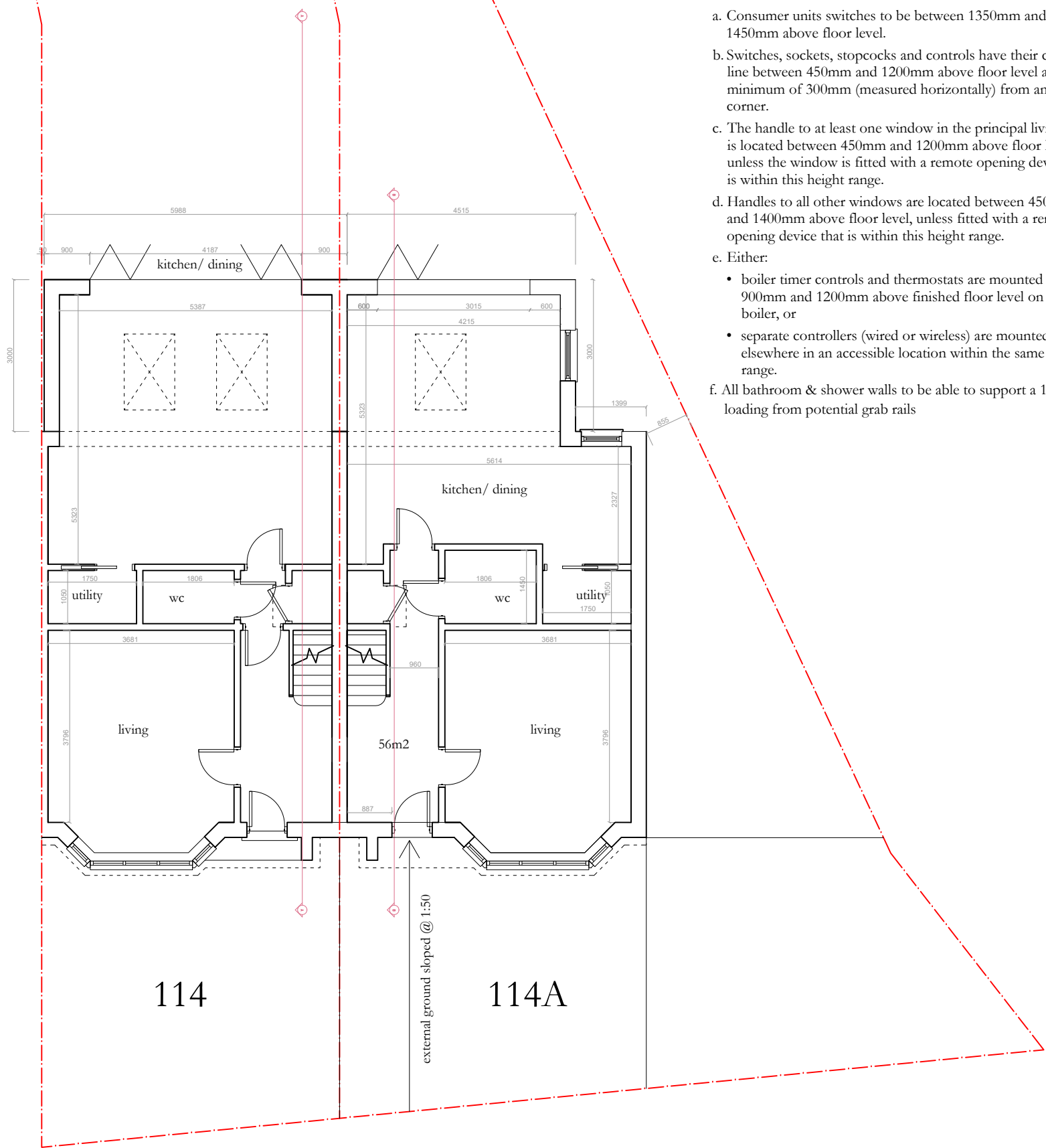
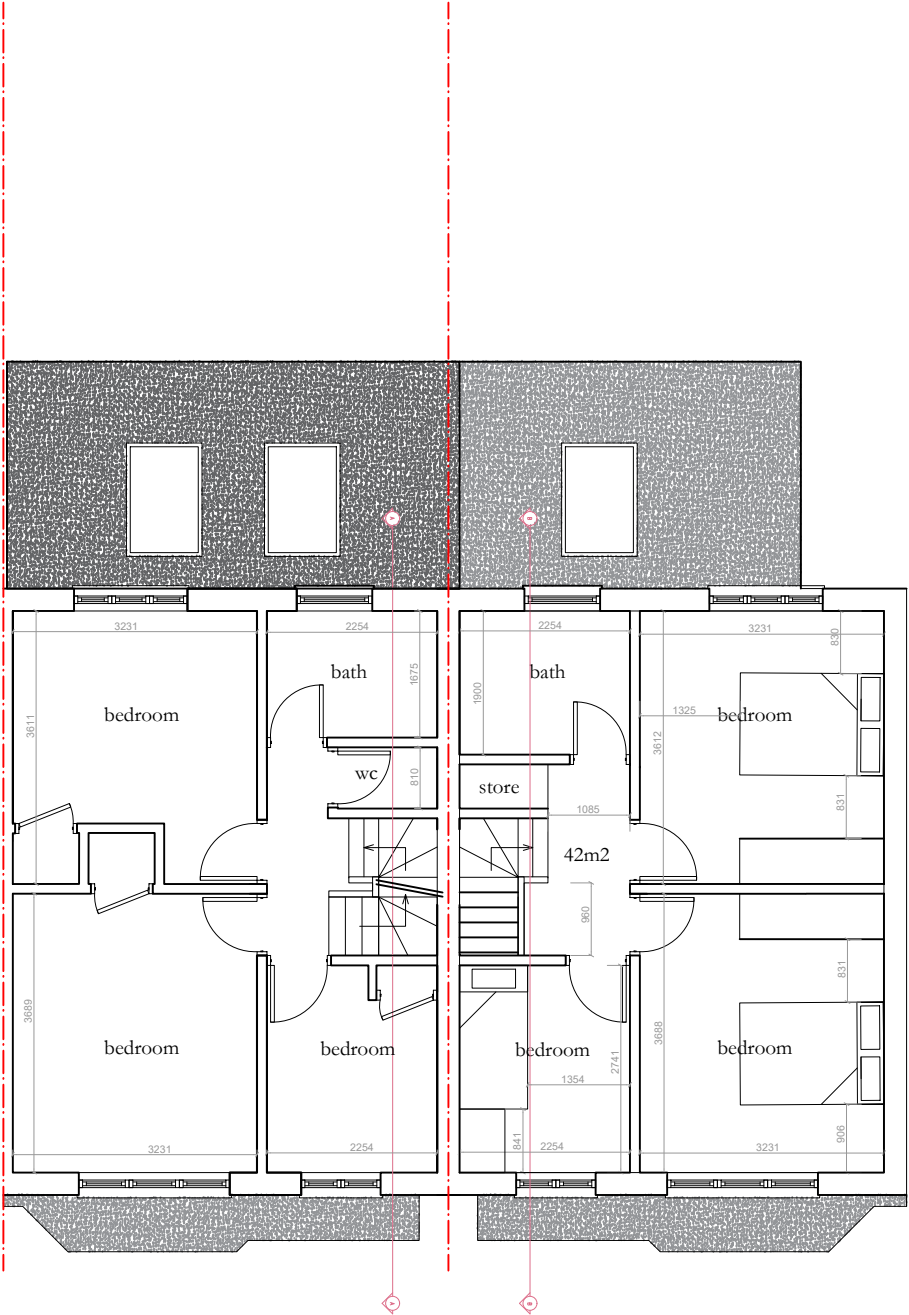


- Notes:
- a. Consumer units switches to be between 1350mm and 1450mm above floor level.
 - b. Switches, sockets, stopcocks and controls have their centre line between 450mm and 1200mm above floor level and a minimum of 300mm (measured horizontally) from an inside corner.
 - c. The handle to at least one window in the principal living area is located between 450mm and 1200mm above floor level, unless the window is fitted with a remote opening device that is within this height range.
 - d. Handles to all other windows are located between 450mm and 1400mm above floor level, unless fitted with a remote opening device that is within this height range.
 - e. Either:
 - boiler timer controls and thermostats are mounted between 900mm and 1200mm above finished floor level on the boiler, or
 - separate controllers (wired or wireless) are mounted elsewhere in an accessible location within the same height range.
 - f. All bathroom & shower walls to be able to support a 1.5kN/m² loading from potential grab rails



Proposed ground floor



Proposed first floor

A&S Design

8, 90 Akerman Road London, SW9 6SN
info@as-d.co.uk | m:07588693045

Project:
114 Royal Lane
UB8 3Y

Title:
Proposed plans

REV: (D)

Scale:
1:100@a3p

DN: S679-RL-03P