

© This drawing is copyright.  
It is sent to you in confidence and must not be reproduced or disclosed to third parties without our prior permission.

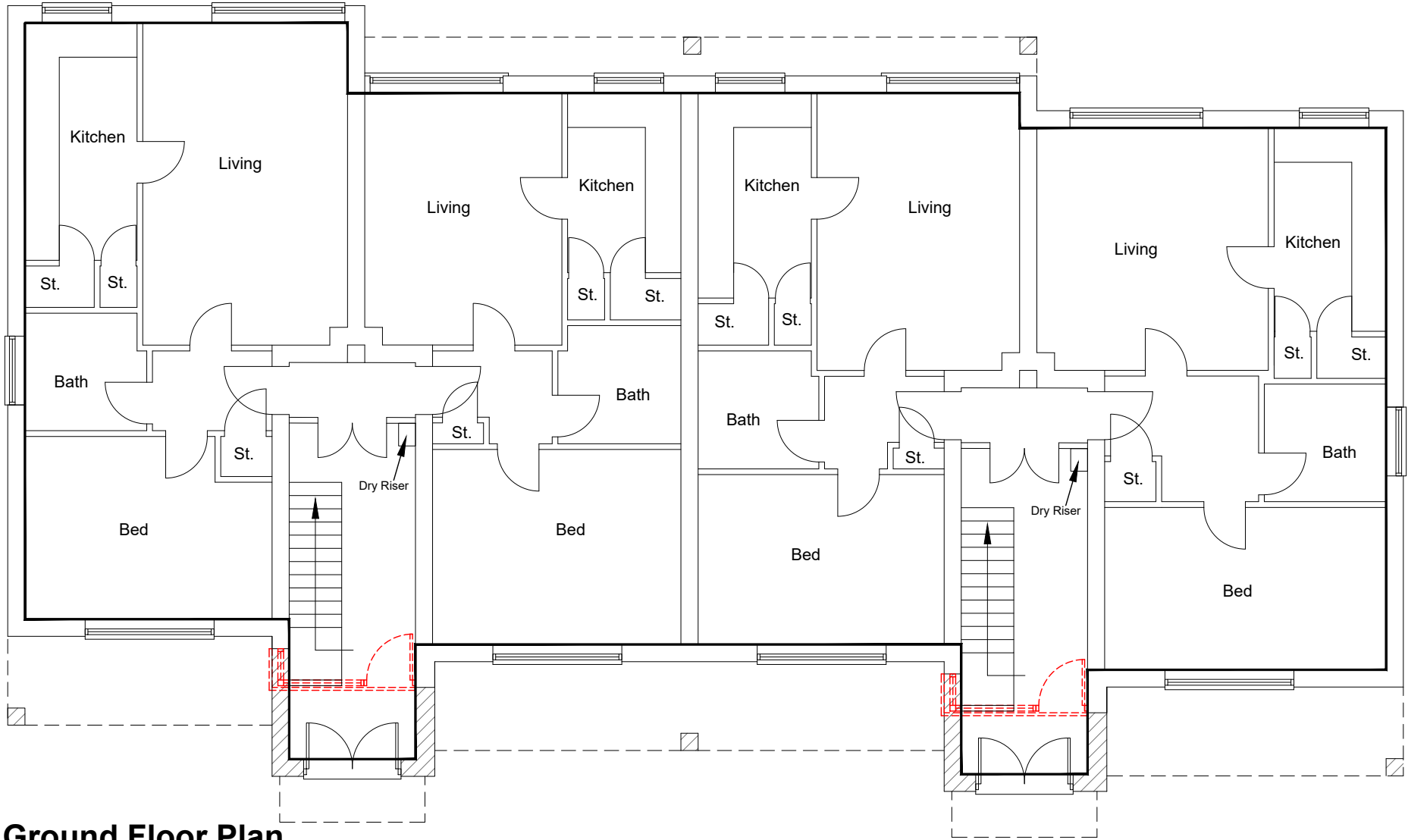
Do not scale from this drawing, other than for Local Authority Planning purposes.

This drawing is to be read in conjunction with all relevant consultants, specialist manufacturers drawings and specifications.

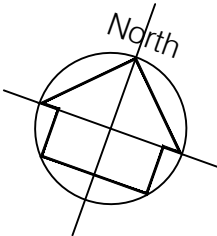
Any discrepancies in dimensions or details on or between these drawings should be drawn to our attention.

All dimensions are in millimetres unless noted otherwise.

Any surveyed information incorporated within this drawing cannot be guaranteed as accurate unless confirmed by fixed dimension.



Ground Floor Plan



| REV      | DATE | DESCRIPTION | INITIAL | CHECKED |
|----------|------|-------------|---------|---------|
| PLANNING |      |             |         |         |



harding rose architects

CLIENT  
ANSLIP UK LTD

PROJECT  
Neyland Court, 11-17 Pembroke Road, Ruislip, HA4 8NQ

TITLE  
Proposed Ground Floor Plan

|                   |                       |         |  |
|-------------------|-----------------------|---------|--|
| SCALE<br>1:100@A3 | DATE<br>17.01.23      | P.304 A |  |
| DRAWN<br>AC       | PROJECT NO.<br>15.530 |         |  |