

© This drawing is copyright
It is sent to you in confidence and must not be reproduced or disclosed to third parties without our prior permission.

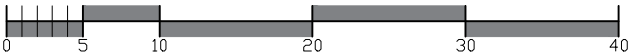
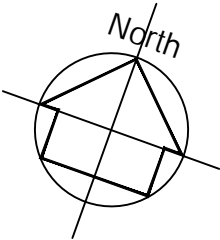
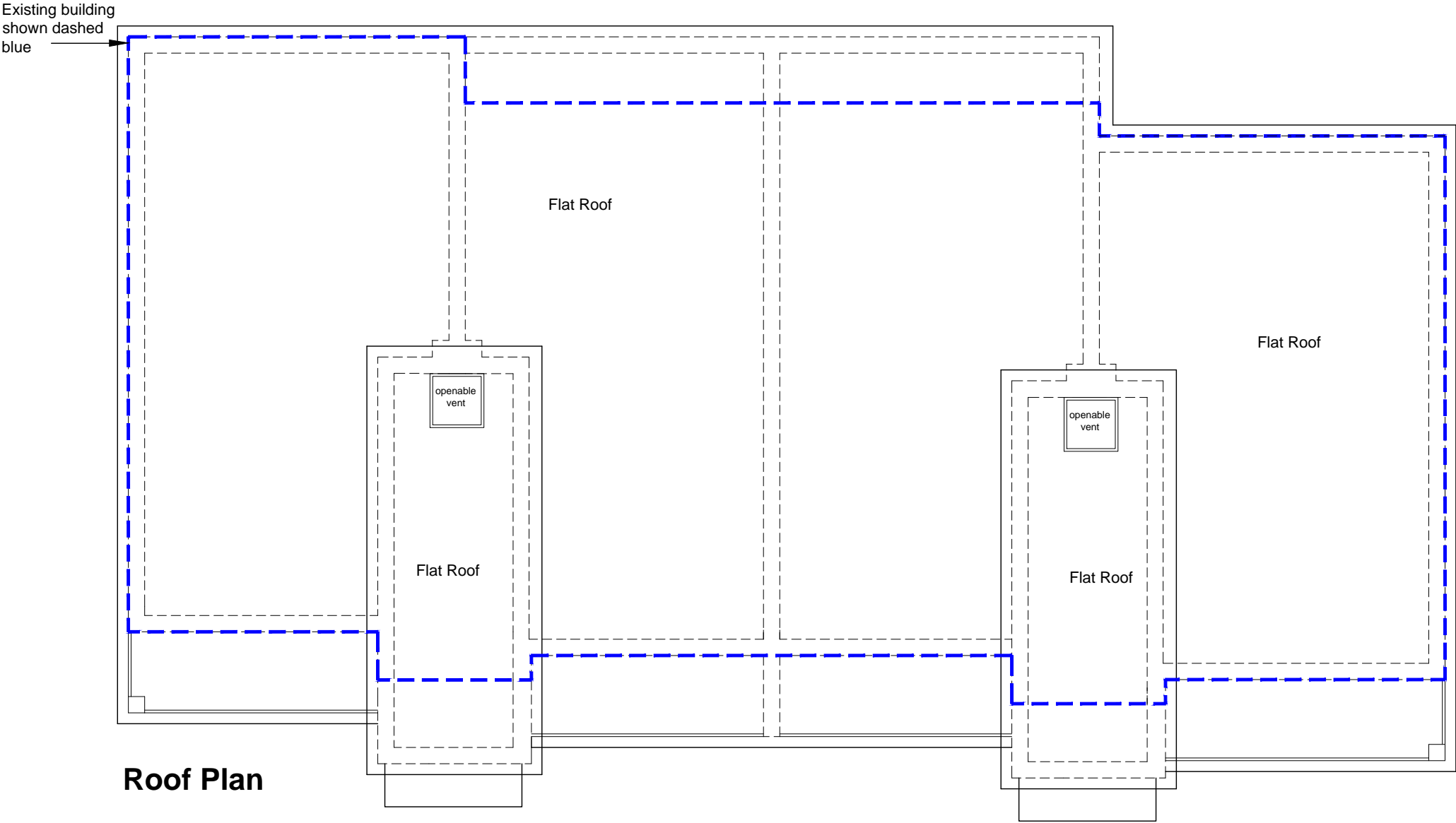
Do not scale from this drawing, other than for Local Authority Planning purposes.

This drawing is to be read in conjunction with all relevant consultants, specialist manufacturers drawings and specifications.

Any discrepancies in dimensions or details on or between these drawings should be drawn to our attention.

All dimensions are in millimetres unless noted otherwise.

Any surveyed information incorporated within this drawing cannot be guaranteed as accurate unless confirmed by fixed dimension.



REV	DATE	DESCRIPTION	INITIAL	CHECKED
PLANNING				



harding rose architects

CLIENT	ANSLIP UK LTD
PROJECT	Neyland Court, 11-17 Pembroke Road, Ruislip, HA4 8NQ

TITLE	Proposed Roof Plan
-------	--------------------

SCALE	1:100@A3	DATE	08.12.21	P.209	
DRAWN	AC	PROJECT NO.	15.530		