
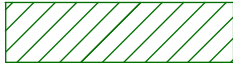
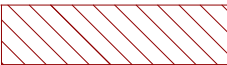
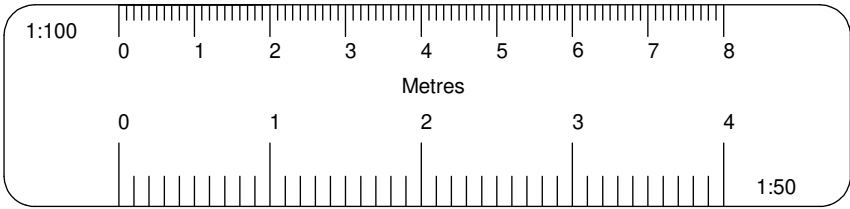


EXISTING PERMEABLE  
'CELLWEB TRP' AREA  
DEPICTED:  
  
(USED FOR OFF-STREET  
PARKING)

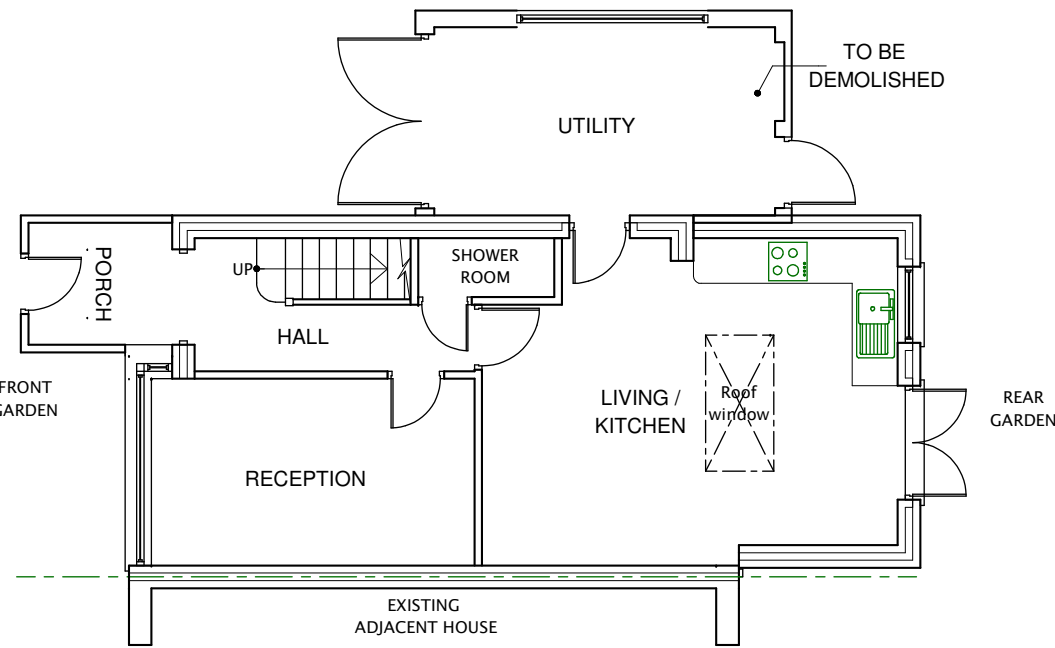
EXISTING/ORIGINAL  
HARDSTANDING AREA  
DEPICTED:  
  
(USED FOR OFF-STREET  
PARKING)

EXISTING PERMEABLE  
'CELLWEB TRP' AREA  
DEPICTED:  
  
'CELLWEB TRP' AREA.  
DETAILS AS BELOW:

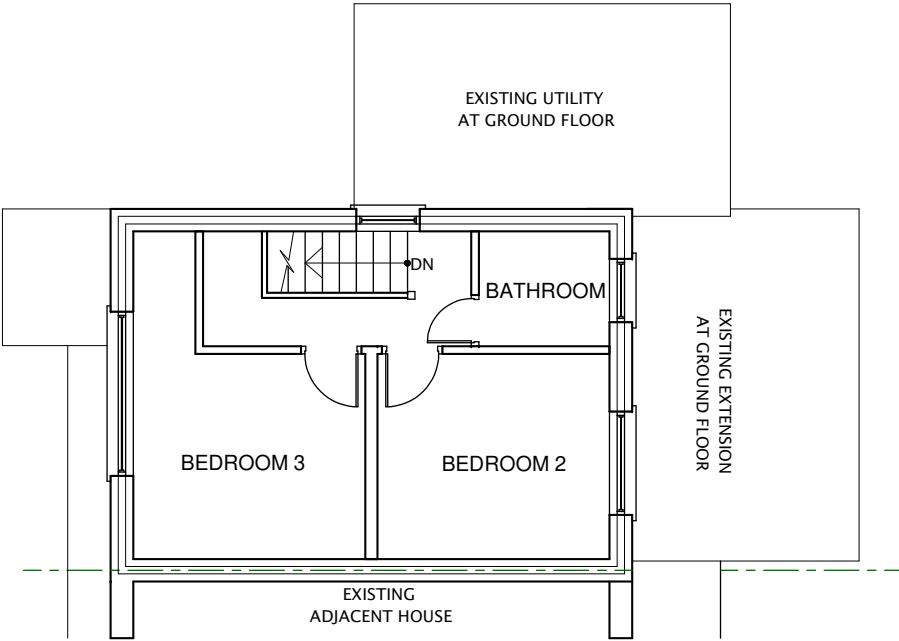


EXISTING LANDSCAPED  
STRIP (LAWN)

EXISTING BLOCK / ROOF PLAN (SCALE 1:200)



EXISTING GROUND FLOOR PLAN



EXISTING FIRST FLOOR PLAN

PAGE 1:



### Cellweb®TRP

Why protect trees?

Trees provide a wealth of benefits within the urban environment including cleaning the air, prevention of flooding and moderation of the climate.

As a result, within the UK it is an offence to cut down, lop, uproot, top, wilfully damage or destroy a protected tree without authorisation. Fines, if the defendant is found guilty in a Crown Court, are unlimited.

To minimise the environmental impact and avoid legal proceedings, we offer the independently tested Cellweb®TRP system.

### What is Cellweb®TRP?

Cellweb®TRP is a cellular confinement system specifically designed for tree root protection. The system creates a stable, load-bearing surface for traffic or footfall whilst eliminating damage to roots through compaction and desiccation.

The Cellweb®TRP system comprises of three specific elements, Cellweb®TRP, Treetex™ pollution control geotextile and an infill of clean angular stone. The system has been designed to create an unparalleled solution to tree root protection applications.

Cellweb®TRP is a no-dig solution that ensures that the load placed upon it is laterally dissipated rather than transferred to the soil and roots below. The use of Treetex™ pollution control geotextile allows for drainage and separation whilst preventing contaminants from reaching the roots.

The walls of the cells are perforated and when combined with the infill of clean angular stone, enables free movement of water and oxygen, ensuring that supplies to the tree roots are maintained.

**Geosynthetic**  
Engineered Solutions

"Creating Innovative Solutions with Outstanding Products"

PAGE 2:



### What makes Cellweb®TRP different?

With over 15 years of captured data and thousands of installations, the Cellweb®TRP system has developed a reputation for excellence.

We are so confident in our system, we offer a guarantee that covers the replacement of the trees and of the system itself. With Cellweb®TRP being quick to install and having a 100% success rate it is clear to see why the Cellweb®TRP is regularly specified by tree officers and arboriculturalists across the country.

### From the drawing board to installation, we are here to help.

We have been supplying the Cellweb®TRP system since 1998 and our technical team have vast experience with tree root protection and the associated legislation.

Delivering complete peace of mind to customers is our number one priority. As part of this customer care package we offer free on site consultations, technical recommendations and on site installation guidance on all projects.

Our in-house engineering team provide site specific recommendations to ensure the solution used is cost effective and environmentally sound.

For more information on Cellweb®TRP or Geosynthetic Limited please contact our sales office on 01455 617139 or visit [www.geosyn.co.uk](http://www.geosyn.co.uk).



Geosynthetic Limited | Fleming Road | Harrowbrook Ind Est | Hinckley | Leicestershire | LE10 8DU  
sales@geosyn.co.uk | Tel: 01455 617 139 | Fax: 01455 617 140 | [www.geosyn.co.uk](http://www.geosyn.co.uk)

INVESTORS IN PEOPLE | Bronze

All dimensions verified on site.  
All external surfaces to match existing.  
All work to be to the satisfaction of the local authority-building surveyor.  
Builder to serve building notice and comply fully in all respects.  
Owner responsible for compliance with 1.Party Wall etc Act 1996. 2. Thames water Build Over Agreement.  
Builder to ensure all work in compliance with Build Over agreement as approved by Thames Water

	DATE	REVISION
COPYRIGHT:		
JOB TITLE:		
89 WARWICK CRESCENT HAYES		
DRAWING TITLE:		
EXISTING GROUND FLOOR PLAN, FIRST FLOOR PLAN AND BLOCK / ROOF PLAN		
SCALE : 1:100		
DATE: 18052024		
DRAWN BY:		
DRG. NO.		REV.
2021/89/WCH/4001		