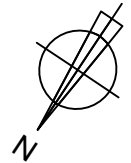
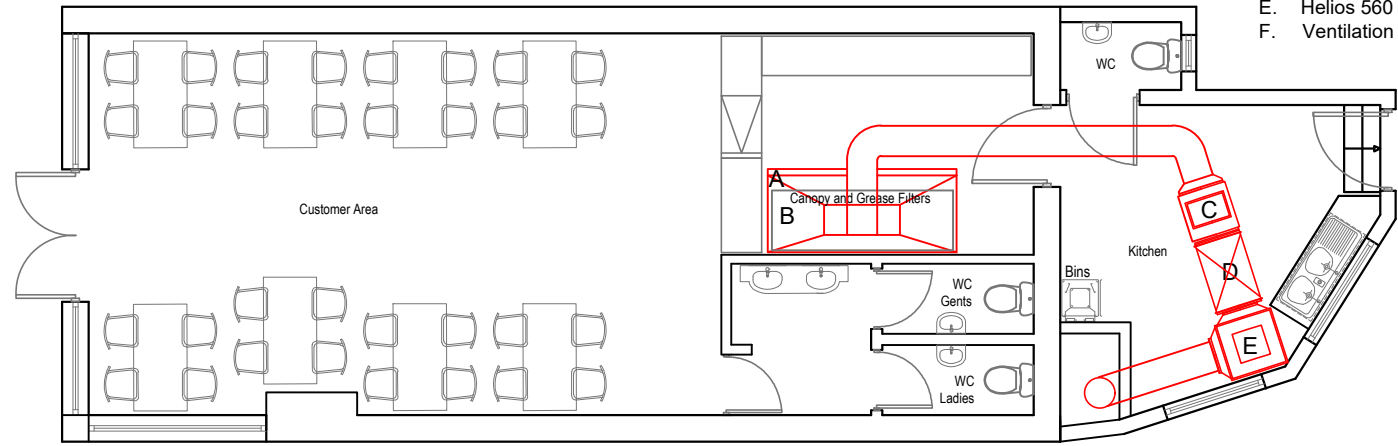


EXISTING GROUND FLOOR PLAN
Total Area : 80sqm

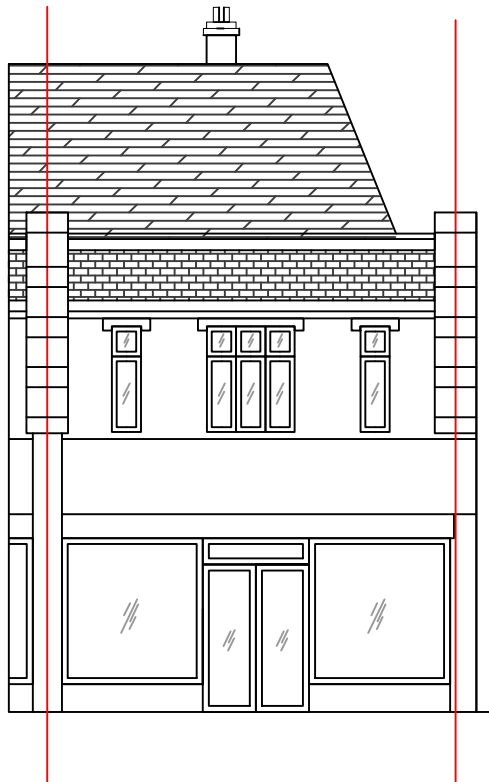
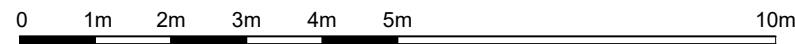


NOTES:

- A. Cooking particulates and odours
- B. Canopy and Grease Filters
- C. Particulate Control Unit ESP3000
- D. Carbon Filter Units12X SiteSafe PA240824
- E. Helios 560 Fan
- F. Ventilation flue



PROPOSED GROUND FLOOR PLAN
Total Area : 80sqm



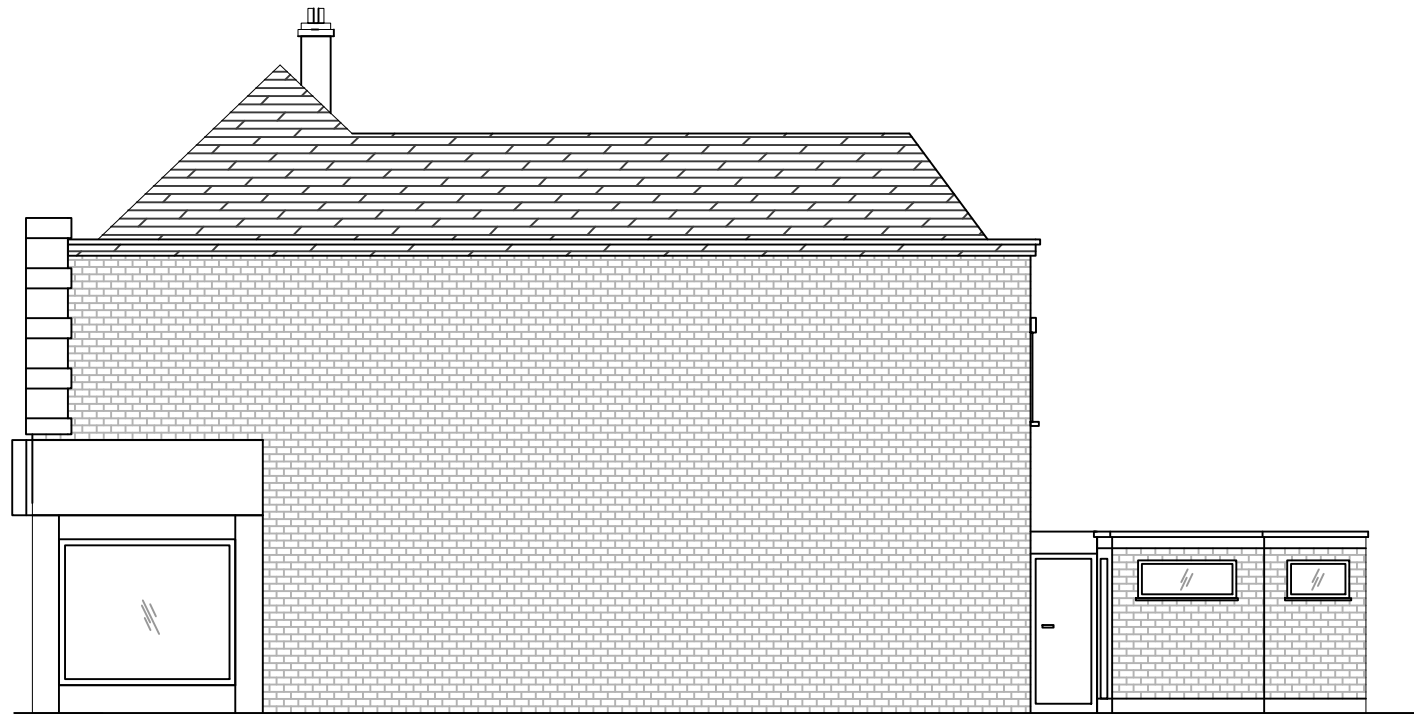
EXISTING AND PROPOSED FRONT ELEVATION
(No Change)



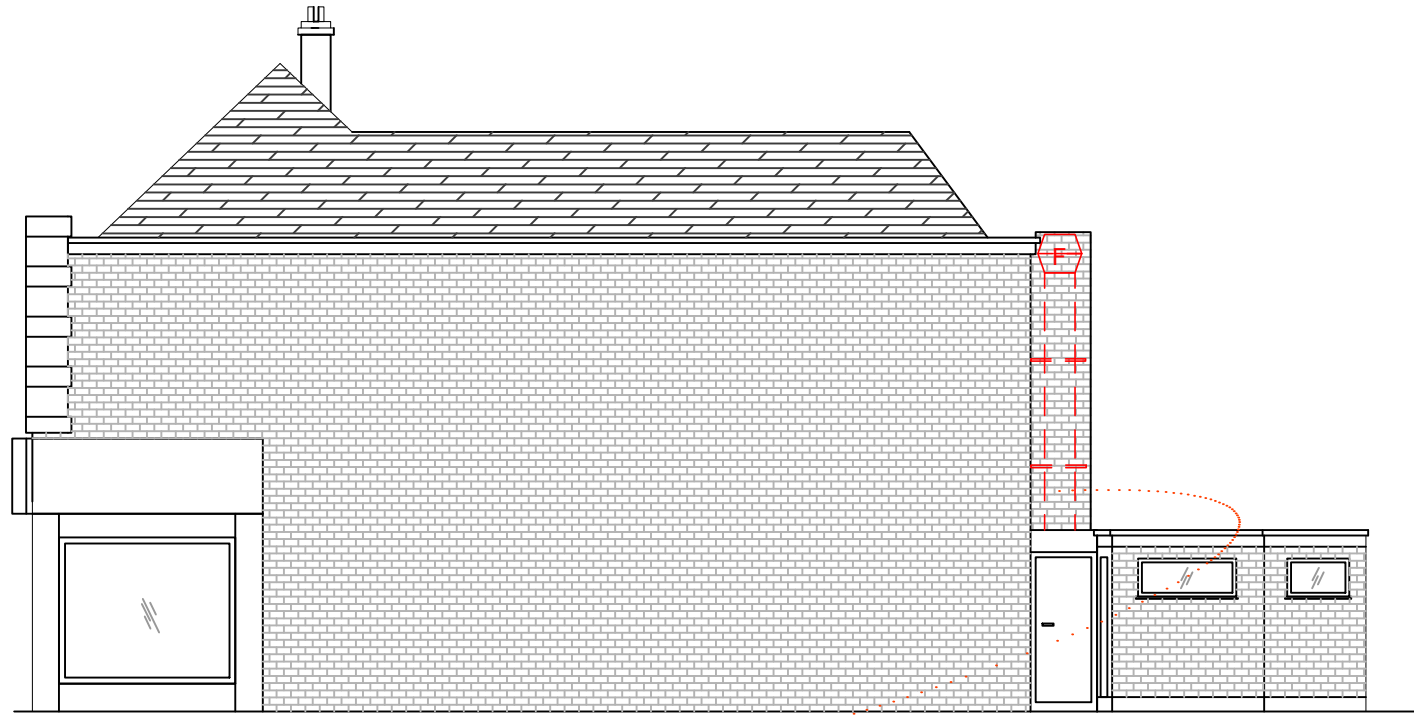
EXISTING REAR ELEVATION



PROPOSED REAR ELEVATION



EXISTING GROUND FLOOR PLAN
Total Area : 80sqm



PROPOSED GROUND FLOOR PLAN
Total Area : 80sqm

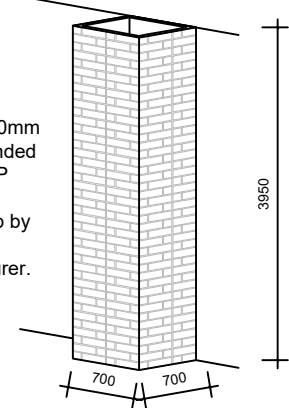
The proposed GRP brick effect cover will matched to the existing brickwork

Galvanised steel retaining straps on all four sides to attach the chimney to the plywood box and roof structure. All fastening must be done from the Inside. The GRP wall of the stack assembly must not be pierced.

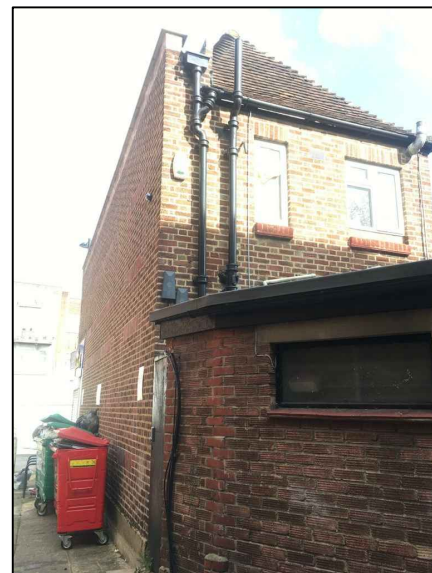


The Plywood Box to be constructed from 18mm Exterior WBP plywood and to be fastened and braced to the roof structure to the architect's specifications.

50mm x 50mm timber bonded to the GRP chimney assembly by chimney manufacturer.



PHOTOS
REAR SIDE OF THE
PREMISES



ESP 3000E

The first stage of control will be PurifiedAir's Electrostatic Precipitator units in a double pass formation. ESP 3000E's have been specifically designed for kitchen extract and not modified from industrial use, they have integral sumps to collect the oil, grease and smoke particles filtered out of the exhaust; this not only simplifies servicing but eradicates potentially dangerous spillage from the bottom of the units and greatly cuts down on flammable build-ups within the duct run. The ionisation voltage has been designed to run at a negative potential which enhances the ionisation of particles and also produces more Ozone which is helpful in reducing odours in kitchen applications.

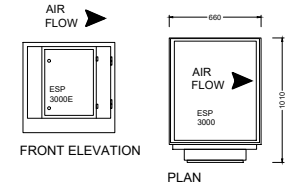
ESP 3000E units fit in-line with the kitchen ducting and can be configured modularly to cope with all extract volume requirements. The Electrostatic Precipitator is a very efficient means for separating the particulate phase; operating efficiency when clean can be as high as 98% at particle sizes down to 0.01 micron.

The Electrostatic Precipitator does not present a high-pressure loss (175PA approx. dependant on air flow). This gives a specific advantage in that most standard Kitchen extractor fans will have the capability of overcoming this small differential. This is particularly advantageous when it is considered that if the pressure loss were high larger noisier fans would probably be necessary resulting in potential noise pollution.

PURIFIED AIR ESP - 3000E
PARTICULATE CONTROL UNIT



Electrical Supply 220/240V 50Hz
Power Consumption 50 Watts
Max Air Volume up to 1,4m3/sec
Dimensions W/H/D 800mm/630mm/540mm
Weight 85 Kg



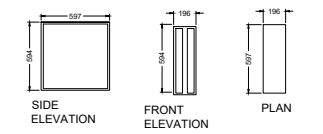
PURIFIED AIR CARBON
FILTERS

The second stage of control will be Purified Air's Sitesafe carbon filters; these innovative carbon units measure 594x196x597mm, three combining to 594x594x597mm, directly replacing original carbon blocks whilst providing exactly the same filter performance as an existing full size cell.

Their advantage is that they only weigh 18kg each against the 68kg of original blocks. This takes the strain out of fitting and servicing, allowing only one engineer to complete the task where two had been previously required.

Sitesafe carbon filters use panels of activated carbon to remove the malodorous gases within the commercial kitchen extract duct through the process of chemical adsorption. By installing Purified Air ESP 3000 E units before, Sitesafe filters, the carbon life span is greatly will increase, allowing it to nullify malodours at optimum efficiency for much longer.

PURIFIED AIR CARBON UNIT
SITESAFE PA242424



Size 594x196x597
Gross Weight 17.98kg
Carbon Weight 15.8kg
Rated Airflow 1200m3/hr
Pressure Drop 120Pa

HELIOS 560 FAN

A great multifunctional box fan from German manufacturer Helios Ventilation. This fan is suitable for medium to higher airflow volumes against high resistances in every type of ventilation system The ..T120 Range is also suitable for the extraction of dirty, humid and hot air upto a maximum of 120Deg C.

Self-supporting frame construction from aluminium hollow profiles
Double walled side panels with 20mm thick temperature insulating and flame retardant mineral wool
Steel backward curved centrifugal impellor 90 Degree or straight through air path possible. Except T120 range which is only 90 degree air path
T120 range only has motor out of air stream
Suitable for outdoors with appropriate weather cowl
All sizes except GBD630/4 T120 can be speed controlled

